

Takeda Sayako

Takeda Sayako is an [player character](#) controlled by [Yuuki](#) who appears in appears in general roleplay, [Hinomaru Sunrises](#), and [YSS Kōun Plot](#). She first appeared as an [npc](#) in [Episode Three](#) of the light novel [Excuse Me, But Did You Just Say I Was in Cryogenic Stasis for More than Thirteen Years?](#), and later in [Resolutions Of The Ghost](#) and [Hinomaru Sunrises](#). After becoming sentient and joining the [Star Army of Yamatai](#), she was assigned to the [YSS Kōun Plot](#).

Takeda Sayako



Species & Gender	Android , Female
Date of Birth	YE 42.1.20
Clan:	Motoyoshi Clan
Faction:	Yamatai Star Empire
Organization:	Star Army of Yamatai

Takeda Sayako	
Occupation:	Star Army Science Officer
SAoY Rank:	Chui
Current Placement:	YSS Kōun

- Approval Thread: [stararmy.com/...](#)
- Orders Thread: [Orders](#)

Physical Description

As a [KAIMON/Ascendant Consort](#), Takeda Sayako has some degree of control over her appearance, to include changing the color of her skin, hair, and eyes, the length of her hair (and thus her hairstyle). She may also make small changes to her facial features and body proportions by taking in or expelling liquids or gases to inflate or deflate cavities in the [Yarvex Foam](#) of her structure. However, she continues to use the appearance shown by the holographic projectors when she occupied a [EM-J5 Flying Assistant Robot Series \(FARS\)](#) chassis: that of a slender, young [Yamataian](#) woman with hime-cut black hair, soft brown eyes, and ivory skin. She is always impeccably groomed and dressed, generally always wearing a [uniform](#) unless in a situation where [fashion or custom](#) dictate otherwise.

Personality

Even after attaining full sentience, the [EM-J5-M3600 - Emoticon pack](#)'s configuration is still very dominant. Acting like the typical [Class Representative](#), she's strict, dedicated, meticulous, disciplined, and more than a little nosy and bossy. She likes to ensure everything is to standard, dotting every 'i' and crossing every 't.' She also possesses a great deal of ambition, and early on it was more often than not on behalf of another, usually her former owner [Motoyoshi Tachiko](#). Over time, that ambition began to extend to her own plans.

Viewing interactions with others more as information gathering exercises than satisfying a social need, she often takes the opportunity to study, or experiment with, their behavior. To her, everything is science— just an informational feed. This is not to say she doesn't find social interactions pleasurable at times, but it's hardly a core drive as it might be with a social species like humans. She does maintain relationships with those she is in contact, but there is an inherent asymmetry involved.

As her personality has developed, she has begun to develop something like contempt for organic species. As she's generally unfailingly polite, even when openly bossing others around or criticizing them, it is rare to see a glimpse of this side of her. However, it does show a bit more often as the feelings deepen.

History

Takeda Sayako began her existence as a humble [EM-J5-1a - FARS SAOY](#) issued to the then-named [Takeda Tachiko](#) in early [YE 42](#) while she was in quarters aboard the [YSS Eucharis](#). Tachiko installed a [EM-J5-](#)

M3600 - Emoticon pack with the “**Class Representative (Yamataigo: 学級委員 - Gakkyuiin)**” configuration. This particular personality configuration was especially quirky, being very ambitious and driven to help **Tachiko** succeed. In particular, the assistant drone was essential in handling her owner's luck in the Last Chance Salvage Giveaway, ensuring that the goods were sold at a good price and the proceeds were invested properly. It was the drone, going through **Tachiko's** collection of recipes and ideas, that led to the creation of **Takeda House** and **Takeda Fleet**. Her name comes from **Tachiko's** attempt to pronounce **FARS SAOY** phonetically.

After the release of the **KAIMON/Ascendant Consort** in **YE 43**, **Motoyoshi Tachiko** had the **FARS's** personality module and memory matrix transferred into one of the new bodies. Displaying some contempt for her old form, Takeda Sayako had **Tachiko** return it to surplus. The immense increase in processing power available to her led to a cascading growth effect. It was not long in her new form before Takeda Sayako attained full sentience and dutifully reported it to her masters. Opting to stay with **Yugumo Corporation**, she was promoted to a **junior executive** position, whose primary duty was to oversee the various ventures that **Tachiko** managed upon her deployment aboard the **YSS Mazu**.

Soon, she grew frustrated that after becoming sentient, her **PANTHEON Module** had been deactivated. She felt she could not properly serve a clan or company so intimately connected with the military without it. So, in **YE 43**, she joined the **Star Army of Yamatai**¹⁾. Initially intending to be a **reservist**, instead she became excited at the prospect of independence for the first time, and chose to become a **Star Army Science Officer** in active duty service, leaving the **First Expeditionary Fleet** behind altogether. She became an officer based on the recommendation of **Ketsurui-Motoyoshi Katsuko**, and was assigned to the **First Fleet**, becoming the Science Officer of the **YSS Kōun**²⁾.

While aboard the **YSS Kōun**, Sayako took point on a First Contact mission with an alien government. She provided plans to replicate her custom **telepresence drone**, so that she could explore along with them while her main body remained aboard her posted ship.

In **YE 45**, Sayako was promoted to **Chui**.

Sayako's Service Record

Official service record for Takeda Sayako

YE 43



- *Shoi Kohosei, Star Army Training Administration*
- *Mayame Officer School, Ronica*



- *Shoi Kohosei, Star Army Training Administration*

- [Ketsurui Academy](#), [Ketsurui no Iori](#), [Yamatai \(Planet\)](#)

YE 44



- [Shoi](#), [First Expeditionary Fleet](#)
- [YSS Kōun Plot](#), [Science Officer](#)

YE 45



- [Chui](#), [First Expeditionary Fleet](#)
- [YSS Kōun Plot](#), [Science Officer](#)

Skills Learned

Takeda Sayako is trained in all [Star Army Common Skills](#), and the [occupation-specific skills](#) for being an officer. She is a [Star Army Science Officer](#), and has those [occupation-specific skills](#), and also has downloaded the [occupation-specific skill sets](#) for [Star Army Technician](#), [Star Army Information Technology](#), and [Star Army Communications Specialist](#).

Additionally, Takeda Sayako has the following notable skills:

Communications

Takeda Sayako is a very competent administrator and secretary. She was originally a [Star Army assistant drone](#) and retains all of that programming. She has extensive experience in business communications from her work for [Yugumo Corporation](#), and as [Motoyoshi Tachiko](#)'s personal assistant. Takeda Sayako is fluent in [Trade \(language\)](#), [Yamataigo \(邪馬台語\)](#), [Seraphim](#), and [Lorath](#).

Culinary

Takeda Sayako retains all of [Motoyoshi Tachiko](#)'s recipes, and possesses the skills to recreate them. Due to assisting her former owner with many restaurant ventures such as [Takeda House](#), [Tachi's](#), and [Tokyo Brewing Company](#), she is very familiar with the business of running a restaurant, or chain of restaurants.

Domestic

Takeda Sayako retains a [Consort's](#) default domestic programming. She is very competent at laundry, basic cooking, cleaning, infant care, and other such household tasks.

Fighting

Takeda Sayako is proficient with the [stun pulse weapon in her palms](#) and the [FARS Taser](#) implanted in her wrist. Her programming makes her qualified to [Yugumo Keisatsu](#) standards with her [Yugumo E2 Energy Pistol](#). She has also been the sparring partner of [Motoyoshi Tachiko](#) enough to have a familiarity with a synthesis of various [Martial Arts](#). Her programming was updated use of the [FARS Dart Launcher](#) once it was installed.

Knowledge

Takeda Sayako is a repository of [Star Army of Yamatai](#) regulations from her programming as a [EM-J5-1a - FARS SAOY](#). She has the same level of knowledge with [Yugumo Corporation](#) policies. Additionally, she has fully indexed access to [Yamatai Star Empire](#) legal codes.

Maintenance and Repair

As with all [Consorts](#), Takeda Sayako is programmed to be generally “handy” and is a repository of all [Yugumo Corporation](#) and many [Star Army of Yamatai](#) and other technical manuals. She is skilled with the [FARS Arc Cutter integrated into her arm](#) and more or less all basic tools and handheld power tools, and some shop equipment that isn't highly specialized for a specific industry.

Medical and Science

Takeda Sayako is proficient in basic first aid, and can use her built-in defibrillator and the [FARS First Aid kit](#) integrated into her arm competently. As she was originally issued to a [Star Army Medical](#) specialist, she retains all pertinent programming for that duty. She is knowledgeable in the use of the scientific sensors ([radiation](#), [biological](#), [chemical](#)) integrated into her sensor suite. After joining the [Star Army of Yamatai](#) she was updated to utilize the [specimen collecting](#) and [fingerprinting](#) forensic modules.

Takeda Sayako's primary Science specialty is Gravimetric Science, analyzing sensor data, but she is knowledgeable in [all Star Army Science Officer competencies](#).

Original Spec

Takeda Sayako was a standard issue [EM-J5-1a - FARS SAOY](#) with a custom [EM-J5-M3600 - Emoticon pack](#).

- 1 [EM-J5-1a - FARS SAOY](#) with options:
 - [Custom Emoticon Pack](#): “[Class Representative \(Yamataigo: 学級委員 - Gakkyuiin\)](#)”


- [EM-J5-M3601 - Arc cutter](#)
- [EM-J5-M3602 - First aid kit](#)
- [EM-J5-M3607 - Thermographic imaging](#)

Social Connections

Takeda Sayako is connected to:

- [Motoyoshi Tachiko](#) (Former Owner)
- [Alastair Belmont](#) (Commanding Officer, [YSS Kōun](#))
- [Aliset Kōun](#) (Crewmate on the [YSS Kōun](#))

Inventory & Finance


- [Star Army Standard Issue Items](#)
- [EM-J5-1a - FARS SAOY](#)
- [Star Army Science Pad and Kit Type 43](#)
- 2  [Lab Coats](#)
- [Burial Steel](#) component, replica of lighting bezel and frame assembly for her model

Accessories

Takeda Sayako had some of the [FARS accessories](#) integrated into her body, and are retracted and not visible when not in use.

Additionally, she has a the functional components of a repurposed, hand-held [SachiTech Tech-Scanner](#) and [Mineral Scanner](#) built into her left arm along with the rest of the [FARS sensors](#).

FARS Accessories

- [EM-J5-M3601 - Arc cutter](#) located in her right forearm
- [EM-J5-M3602 - First aid kit](#) located in her left forearm
- [EM-J5-M3603 - Radiation detector](#) located in her left palm
- [EM-J5-M3604 - Biological detector](#) located in her left palm
- [EM-J5-M3605 - Chemical detector](#) located in her left palm
- [EM-J5-M3607 - Thermographic imaging](#) located  [beside the nose and beneath the eyes](#)
- [EM-J5-M3609 - Taser module](#) located in the back of her right hand
- A pair of [EM-J4-M3500 Arm](#) that retract into her sides when not deployed.
- A [EM-J5-E3605 - Light bar / Holoprojector](#) is under the skin of her neck, appearing as a necklace of light when active.
- A [EM-J5-E3603 - Communications](#) is used as an auxiliary communications system.
- The [EM-J5-E3604 - Standard sensors](#) are mounted in her head, running parallel to her primary ones.

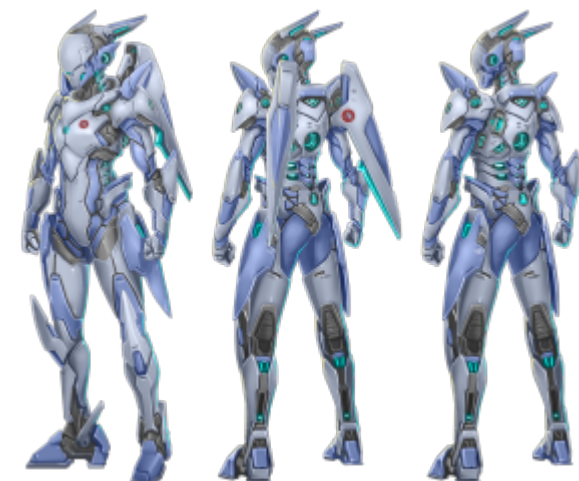
- An embedded [EM-J5-E3600 - Control system](#) running a minimal version of the [EM-J5-E3601 - AI](#) serves as the interface between her [KAIMON](#) system and the [EM-J5 Flying Assistant Robot Series \(FARS\)](#) subsystems and accessories.
- The [EM-J5-P3600 - Grav Lift](#) is in her lower back as a backup propulsion system.

SAoY Restricted Accessories

After joining the [Star Army of Yamatai](#), Takeda Sayako used the opportunity to have some restricted accessories installed into her [EM-J5-1a - FARS SAOY-compatible](#) customized body.

- A [EM-J5-E3602 - Communications \(SAOY\)](#) module installed as a secure backup communications system.
- A [EM-J5-M3608 - Dart launcher](#) located in her right wrist under her palm
- A [EM-J5-M3610 - Forensic module 1](#) located on the back of her left hand, sample tubes stored in left forearm
- A [EM-J5-M3611 - Forensic module 2](#) located in her right palm
- A pair of [EM-J5-M3612 - Electronic lock pick](#) located in the fingers of both hands.
- A subcompact [Aether Generator](#) in her torso, freeing her from the need to recharge her supercapacitor banks.
- The stun weaponry in her palms has been upgraded to allow the option of using a [Scalar Field](#) pulse.
- She's installed the [Armor Integrated Electronics System \(AIES\)](#) system into her chassis, running in parallel with [KAIMON](#).
- The sensor head of a [Star Army Science Scanner, Type 31³](#) is also installed in her left palm, with the body module in her forearm along with the various sensor modules:
 - [Ke-G1-E3100 Lifeform Scanner](#)
 - [Ke-G1-E3101 Chemical Scanner](#)
 - [Ke-G1-E3102 Emission Scanner](#)
 - [Ke-G1-E3103 Scalar Scanner](#)
- The functional components of a [Universally Networked Scalar Array Field Emitter](#)

Sayako's Mindy



Ke-M2-4 Series "Mindy" Armor

Ke-M2-4a "Mindy" Armor - art by Marwan Islami - Copyright 2015 Star.Army

Left Shoulder	Dorsal	Right Shoulder
Ke-M2-W2906 Shoulder-Fired Missile Pod	Ke-M2-W3000 General Equipment Pack	Ke-M2-W3900 Shoulder-Fired 20mm Gauss Cannon
Leg Pods	Utility/Cargo	Handheld
Ke-M2-W3002 Leg NSB Launchers	Star Army Butt Pack, Type 29 with Type 31A Survival Kit and Environmental Suit	Ke-M4-W2901 Light Armor Service Rifle with Ke-M4-W2902 LASR-SLAG
Left Waist	Forearm	Right Waist
2 Ke-M2-W3901 Aether Blade Guntō	2 Ke-M2-W2910 Forearm Pulse Cannons	Armor Service Pistol, Type 29

Ledger

NBY Account # 20220529310745701198020051025			
Total Savings	Addition	Subtraction	Reason
3,000 KS	3,000 KS		Enlistment Bonus
3000 KS	Total		

Takeda Sayako has 3000 [KS](#).

OOC Notes

This character was created by [Yuuki](#) on 2022/01/08 10:09. [Approval Thread](#)

Special permission to [Spaceeye](#) and [Madi Harper](#) to play this character in the [YSS Kōun Plot](#). This includes authorization to update this article to reflect events in that plot.

Character Data	
Character Name	Takeda Sayako
Character Owner	Yuuki
Character Status	Active Player Character
Current Location	Port Jiyuu
Plots	YSS Kōun Plot
Approval Thread URL	stararmy.com/...
Star Army Personnel Database	
SAOY Career Status	Active Duty
SAOY Rank	Chui
SAOY Occupation	Star Army Science Officer
SAOY Assignment	YSS Kōun
SAOY Entry Year	YE 43
DOR Year	YE 45
DOR Month	3
Orders	Orders

1)

<https://stararmy.com/roleplay-forum/threads/yamatai-star-army-recruiting-center-ye-43.66635/>

²⁾
<https://stararmy.com/roleplay-forum/threads/the-yss-kōuns-new-chief-science-officer-comes-aboard.68819/>

³⁾

It works better with her [FARS](#) interface than the [newer model](#), she claims.

From:

<https://wiki.stararmy.com/> - **STAR ARMY**

Permanent link:

https://wiki.stararmy.com/doku.php?id=characters:yamatai:takeda_sayako

Last update: **2023/12/21 00:56**

