

# Avenger Plasma Rifle

Manufactured by [Section 6's Department Of Engineering](#), beginning in early [YE 41](#) to be utilized by [NDC Ground Forces "Duskerian Legion"](#). It is also available for commercial sale.

## About the Avenger

In [YE 41](#), [Section 6](#) continued to face new hostile forces, and thus required a continuous advancement of weapons technologies. With the advent of kinetic/energy hybrid munitions like the [S6-SCPR](#) rounds used in the [BW-MWS2 "Harbinger"](#), before becoming standard for all weapons employed by [NDC Ground Forces "Duskerian Legion"](#). The next logical step was plasma, something that had only been partially explored in terms of munitions. A full on plasma based weapon system was drawn concepted and prototyped by [Seraphina Cerulius](#), then later finalized and put into service by the [Department Of Advanced Research And Development \(D.O.A.R.A.D.\)](#). The [Department Of Engineering](#) made quick efforts to ensure this weapon was produced in sufficient number to arm the current number of armed forces members if necessary.

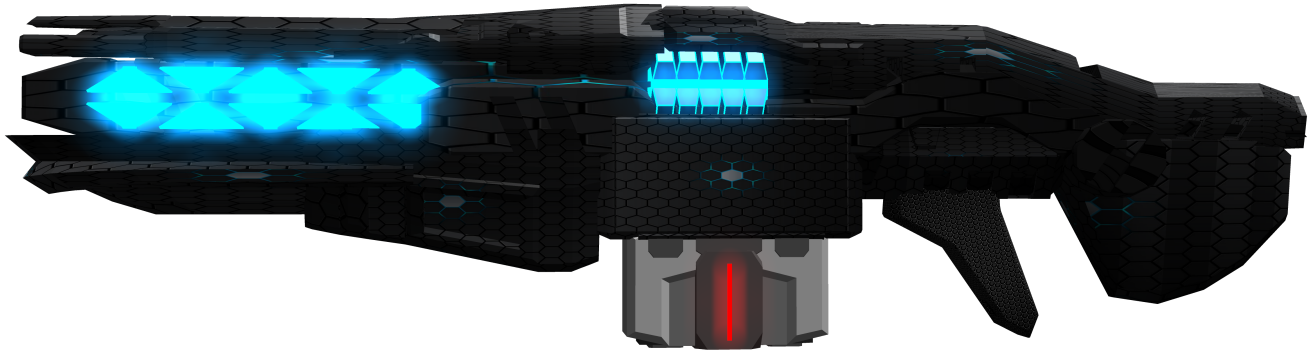
## Nomenclature Information

The basic manufacturing data of the Avenger

- Designer: [Department Of Advanced Research And Development \(D.O.A.R.A.D.\)](#)
- Manufacturer: [Black Wing Enterprises](#)
- Name: S6-PR "Avenger"
- Nomenclature: S6-PRS-1A
- International Nomenclature: S6-W10-1A
- Type: plasma
- Role: assault rifle
- Length: 42 inches <sup>1)</sup>
- Mass: 20 pounds <sup>2)</sup> Loaded

## Appearance

The avenger is a very geometrically shaped gun, all sharp edges and minimal curves. The railed barrel and receiver feature radiator conduits, and glow faintly when the weapon is active. The magazine sits forward of the grip and trigger, the magazine a blocky style power cell. The barrel is a rectangular prism with triangular shaped pieces along its sides, which sits between two rail like components. The bottom rail has a grip like underside.



## Discharge Information

The data on the Avenger's characteristics related to discharging the weapon.

- Muzzle Flash: A bright blue burst of escaping gases.
- Retort: A crackly thump.
  - Projectile/Beam Appearance: Bright bolt of blue plasma with a faint vapor trail of gases.
- Effective Range 1,000 meters
- Rate of Fire: 300 rpm
- Recoil: A sharp kick back towards the user.

## Ammunition (Or 'Energy Source' if applicable)

Data on the Avenger's ammunition source.

- Ammunition [BW-PC-1B "PowerPak"](#)
  - [Purpose](#): T2 Medium Anti-Personnel<sup>3)</sup>
- Round Capacity: 100

## Weapon Mechanisms

- Firing Mechanism: Plasma is formed in the chamber via fuel from the magazine/power cell, and contained within the firing chamber by magnetic field. It is then accelerated down a coiled barrel

that runs in parallel with a pair of magnetic rails.

- **Loading:** The power cell is housed in a magazine style cartridge and simple slid in until it clicks secure into place like any conventional magazine.
- **Mode Selector:** The weapon can be set to one of three fire modes via a slide switch above the grip. Optionally, the user can use mindware to remotely change fire modes on the fly.
- **Firing Modes:** Full auto, 5 round burst, or semi-automatic.
- **Safety Mechanism:** The weapon features the now standard biometric safety system housed in the grip which will only allow the weapon to operate for registered users, otherwise the weapon will not operate.
- **Weapon Sight:** Holographic iron sights are the default for the avenger in place of traditional iron sights. Iron sights can be mounted if desired, but the holo-iron sights are built in and standard default. Additional optical sights can be mounted if the user wishes, via a topside sight mounting rail.
- **Attachment Hard Points:** The Avenger feature a topside sight rail, a underbarrel attachment rail underneath the removal forward grip section, and built in mounting brackets to either side if the magnetic barrel for flashlights, laser sights, and other accessories.

## Other

### Pricing

- S6-PR "Avenger": 1,600DS

### Replaceable Parts and Components

- Magnetic barrel assembly: 400DS
- Magazine dock: 200DS
- Receiver: 600DS
- Stock: 200DS
- Internal components kit: 200DS

### Optional Attachments

- 40mm underbarrel launcher: 100DS
- LCK bayonet mount: 20DS
- 45 degree foregrip: 20DS
- 90 degree foregrip: 20DS
- Laser sight: 10DS
- Flashlight: 10DS
- MOASS sight: 200DS
- ACOG sight: 30DS
- Red dot sight: 20DS
- Iron sights: 10DS
- Multispectral Marksman Scope: 1,200DS

## Ammunition

### BW-PC-1B "PowerPak" Price Quickchart

quantity	Price in DS <sup>4)</sup>
10 pack	2,000
5 pack	1,000
1	200

## OOC Notes

[Jack Pine](#) created this article on 2019/03/25 21:28.

[Approved](#) by [Alex Hart](#) on 2019/04/23

Products & Items Database	
<b>Product Categories</b>	weapons: rifles
<b>Product Name</b>	BW-PR "Avenger"
<b>Nomenclature</b>	S6-W10-1A
<b>Manufacturer</b>	<a href="#">Black Wing Enterprises</a>
<b>Year Released</b>	<a href="#">YE 41</a>
<b>Price (KS)</b>	800.00 KS
<b>DR v3 max</b>	Tier 2
<b>Mass (kg)</b>	9 kg

<sup>1)</sup>

roughly 106.68 centimeters

<sup>2)</sup>

roughly 9 kilograms

<sup>3)</sup>

T3 ablative damage

<sup>4)</sup>

100 round magazine

From:

<https://wiki.stararmy.com/> - **STAR ARMY**

Permanent link:

<https://wiki.stararmy.com/doku.php?id=corp:bwe:guns:avenger>

Last update: **2023/12/21 04:20**

