

# EM-K6 "Kouteki" Grav-Bus

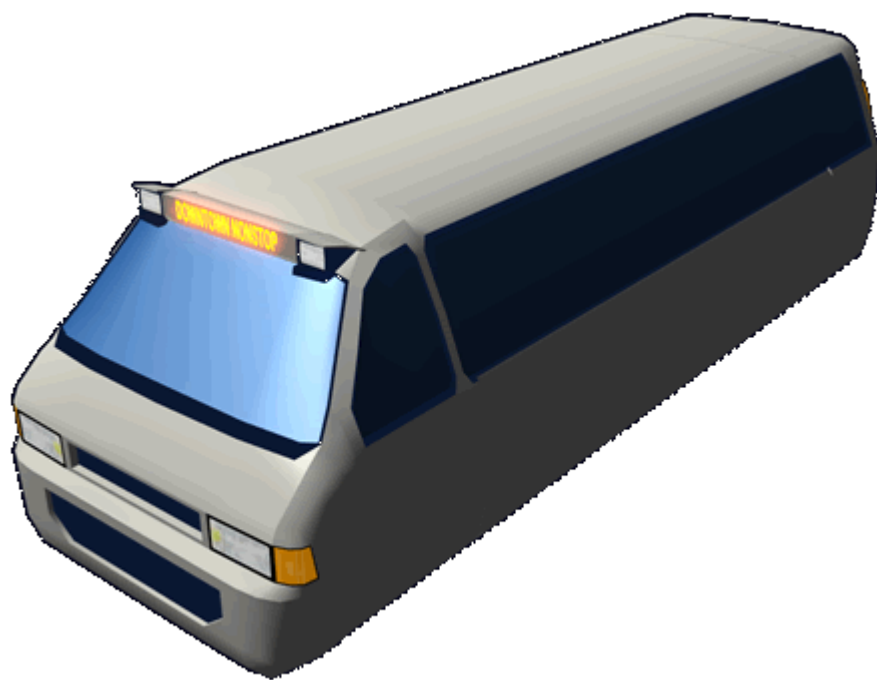
*Emrys Industries*

*A Tamahagane Company*

The EM-K6 *Kouteki* Grav-Bus was designed for use as a commuter bus in [Teisenjou](#) and became available in [YE 34](#).

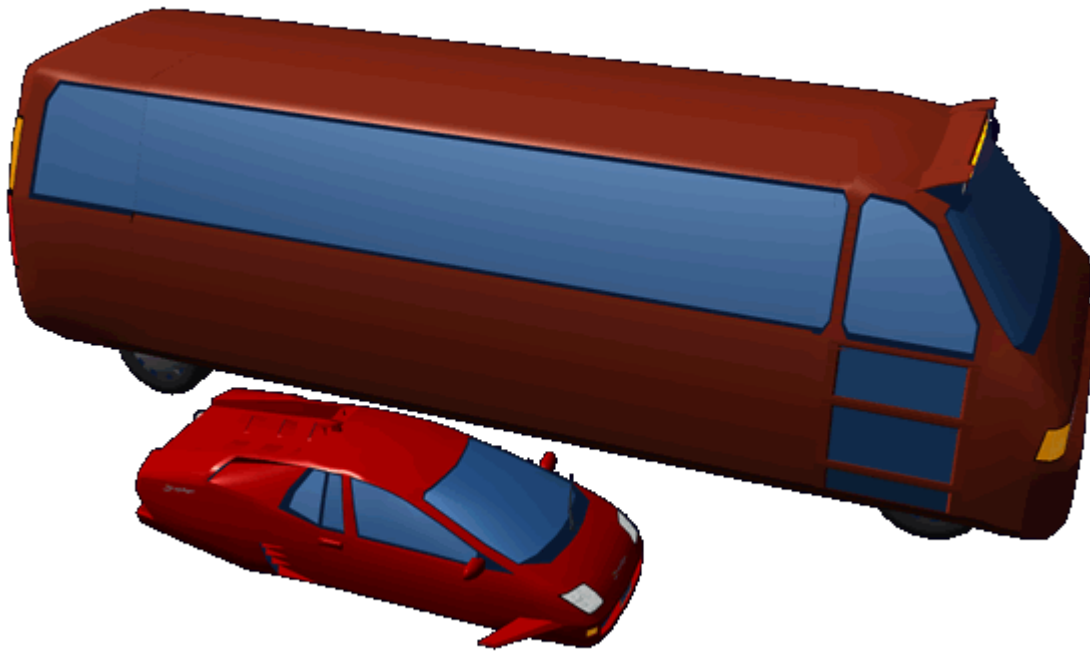
## About the EM-K6

The EM-K6 is a high-tech bus that offers a variety of performance modes. It can be configured for adults or children by changing the seats. The bus can also be configured for long distance service by using the storage space beneath the passenger compartment.



## History

The EM-K6 was developed for use in [Teisenjou](#) as a vital part of the city's transportation system. The vehicle was inexpensive to develop because it used existing systems.



## Specifications

### Details

Manufacturer: [Emrys Industries](#) Nomenclature: Em-K6-1a Type: Grav Class: Commuter Vehicle Designer: [Tamahagane Corporation R&D](#) **Prices:** 7,500 [KS](#)

### Dimensions

Length: 11.7 m Width: 3.7 m Height: 3.5 m

### Speed

- 30 kph wheel
- 150 kph hover on road
- 300 kph at high altitude

## Capacity

Operator: 1 Passengers *Depends on configuration:*

- PC<sup>1)</sup> - 50 adult two person seats (100 passengers)
- SC<sup>2)</sup> - 50 child three person seats (150 passengers)

## Damage Capacity

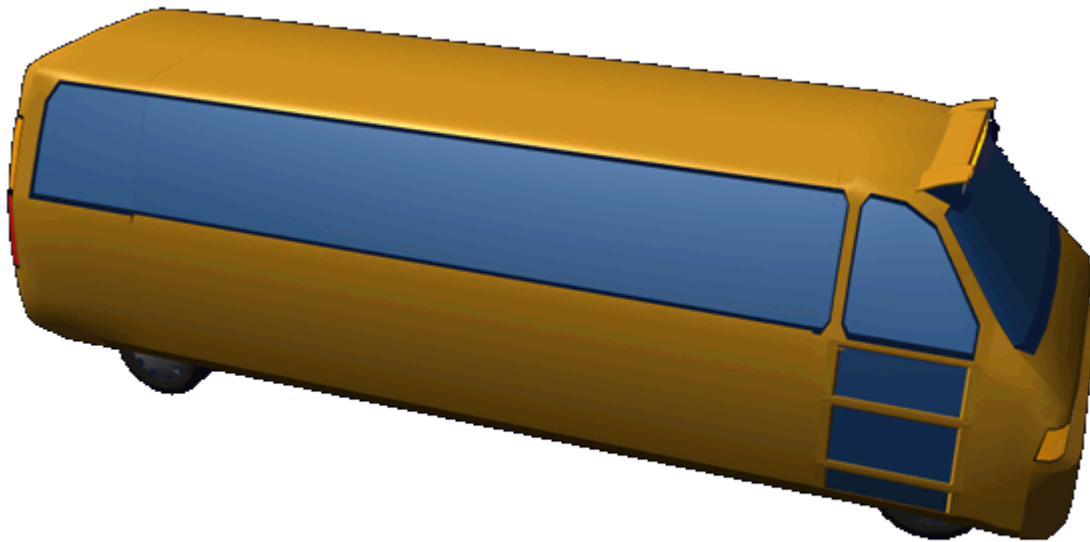
See [Damage Rating \(Version 3\)](#) for an explanation of the damage system.

- Hull: 10 ADR

## Inside the EM-K6

The *Kouteki* has a rather unremarkable interior. It has two rows of passenger seats and an aisle down the center. The seats are padded and have a stain resistant fabric. The aisle is covered in a non-skid surface. The driver seat is located on the left side of the interior. The main door is in the front. There are emergency exits in the form of windows that can be removed.

Ceiling lighting is present the mast controls are by the drivers seat.



## Systems

### Body Construction

The *Kouteki* gets its structural strength because it is built with [EM-K4-A3300 Durable Vehicle Construction](#).

### Electronics

The following electronic systems are the heart of the *Kouteki*.

- [EM-K4-E3301 Autopilot Collision Avoidance System](#)
- [EM-K4-E3302 Communications](#)
- [EM-K4-E3303 Sensors](#)
- [EM-K4-M3302 Security](#)

### Safety

The *Kouteki* is equipped with all the [EM-K4-M3300 Safety Features](#).

## Power Supply

The Kouteki features a dual power system for redundancy.

The primary power supply is a [EM-K4-G3300 Fusion Generator](#). It has enough fuel to operate for 360 hours. In the event of a failure of the primary power or to move the craft without primary power it has a [EM-K4-G3301 Fuel Cell](#).

## Propulsion

The *Kouteki* has three forms of propulsion to give it the best performance it can achieve.

The primary means of propulsion is with four [EM-K4-P3300 Anti-Gravity Units](#). These provide the majority of lift and propulsion force needs.

For increased maneuverability, normally reserved for emergency situations the bus is equipped with eight [EM-K4-P3301 Electric Turbofan Jet Engine](#).

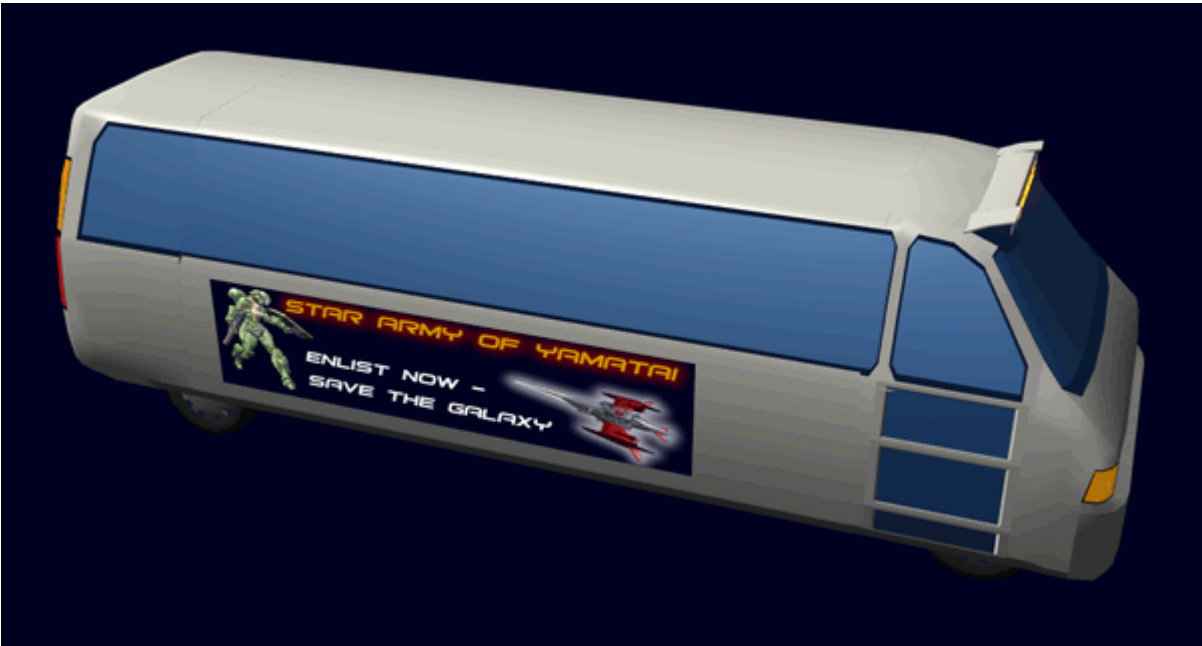
For slow movement across the ground, the vehicle is equipped with four [EM-K6-P3400 Electric Drive system](#). These are also used for when the bus is in the maintenance area. But can also be used in when it is more efficient to roll to the next stop such as dropping students off a nearby stop.

## Environmental

The *Kouteki* maintains a comfortable environment because of its four [EM-K4-V3300 Environmental System](#).

## Non-Technical

The buses can be equipped with signs on the sides for advertisements



Products & Items Database	
Product Categories	vehicles
Product Name	"Kouteki" Grav-Bus
Nomenclature	EM-K6
Manufacturer	<a href="#">Emrys Industries</a>
Year Released	<a href="#">YE 34</a>
Price (KS)	7,500.00 KS

- 1)  
public commuter
- 2)  
school commuter

From:  
<https://wiki.stararmy.com/> - **STAR ARMY**

Permanent link:  
<https://wiki.stararmy.com/doku.php?id=corp:emrys:em-k6>

Last update: **2023/12/21 00:57**

