

EM-J4-M3501 Miscellaneous

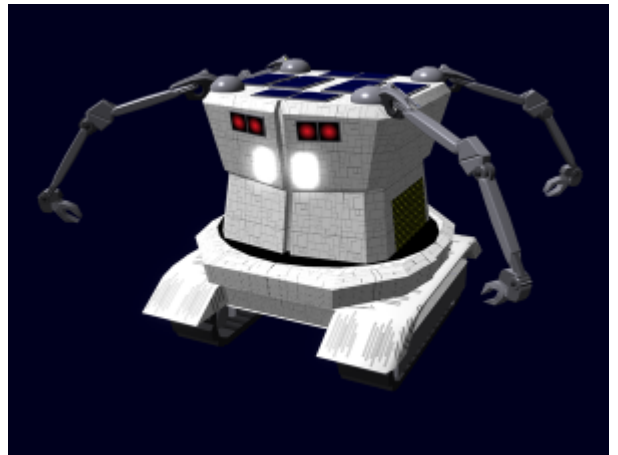
Emrys Industries

A Tamahagane Company

The J4-M3501 Miscellaneous was developed for the [EM-J4 MARI Series Drone](#), it became available in [YE 35](#).

About the M3501

The M3501 consists of several minor components for the drone.



Details

Manufacturer: [Emrys Industries](#) Nomenclature: EM-J4-M3501 Type: Miscellaneous Class: Electronics
Designer: [Tamahagane Corporation R&D](#)

Contents

The M3501 contains the following drone components.

Data Interface

On the left side of the drone, there is a retractable connector which allows the drone to make a physical data connection. The connector is attached to an extending rod that has a reach of 12 inches. It is most often used when the drone is in the [EM-J4-M3503 Docking Station](#).

Power Connector

The M3501 power connector is used by the [EM-J4-G3500 Power System](#) to quickly charge the drone. It can connect to any standard power port. It extends from the body of the drone up to 8 inches.

Lamps

The M3501 provides two headlamps which are mounted below the optical sensors on the front of the drone. The lamps have high power, wide beam, and narrow beam modes. The lamps can be used individually.

Speakers

The M3501 provides a pair of weather proof speakers in the front of the drone. They are stowed behind covers when the drone is operating in an environment that would damage them.

From:

<https://wiki.stararmy.com/> - **STAR ARMY**

Permanent link:

https://wiki.stararmy.com/doku.php?id=corp:emrys:em_j4_m3501

Last update: **2023/12/21 00:57**

