

# EM-J4-P3500 Motor System

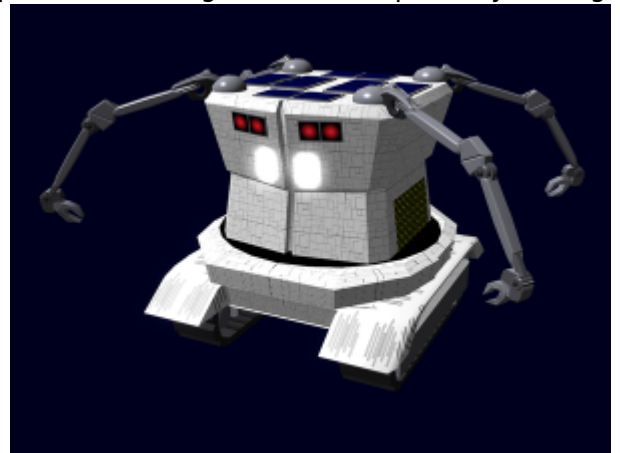
*Emrys Industries*

*A Tamahagane Company*

The EM-J4-P3500 Motor System was developed for the [EM-J4 MARI Series Drone](#), it became available in [YE 35](#).

## About the P3500

The P3500 is capable of moving the drone at speeds up to 20 mph/32 kph. The Motor system can reach this speed going forward or backwards. The P3500 consists of two interchangeable units. They include the protective cover, the motor and treads. The P3500 is capable of rotating the drone in place by driving in opposite directions.



## Details

Manufacturer: [Emrys Industries](#) Nomenclature: EM-J4-P3500 Type: Tread Class: Propulsion Designer: [Tamahagane Corporation R&D](#)

## Usage

For standard movement the J4-P3500 uses only one of the two electric drives on each unit. This is sufficient to get the drone moving at half its rated speed. For faster travel, or for times when additional torque or power are needed, both drives are engaged.

The treads on the J4-P3500 are six inches wide for added traction and stability.

The J4-P3500 can propel the EM-J4 up a 25 degree slope without problems. For steeper grades, the [EM-J4-P3501 Anti-Grav](#) is used to either stabilize the drone, or fly over the slope.

Replacing the J4-P3500 is simple, and no calibration or settings are necessary. The drone command system, automatically configures itself to use the drive properly.

From:

<https://wiki.stararmy.com/> - **STAR ARMY**

Permanent link:

[https://wiki.stararmy.com/doku.php?id=corp:emrys:em\\_j4\\_p3500](https://wiki.stararmy.com/doku.php?id=corp:emrys:em_j4_p3500)

Last update: **2023/12/21 00:57**

