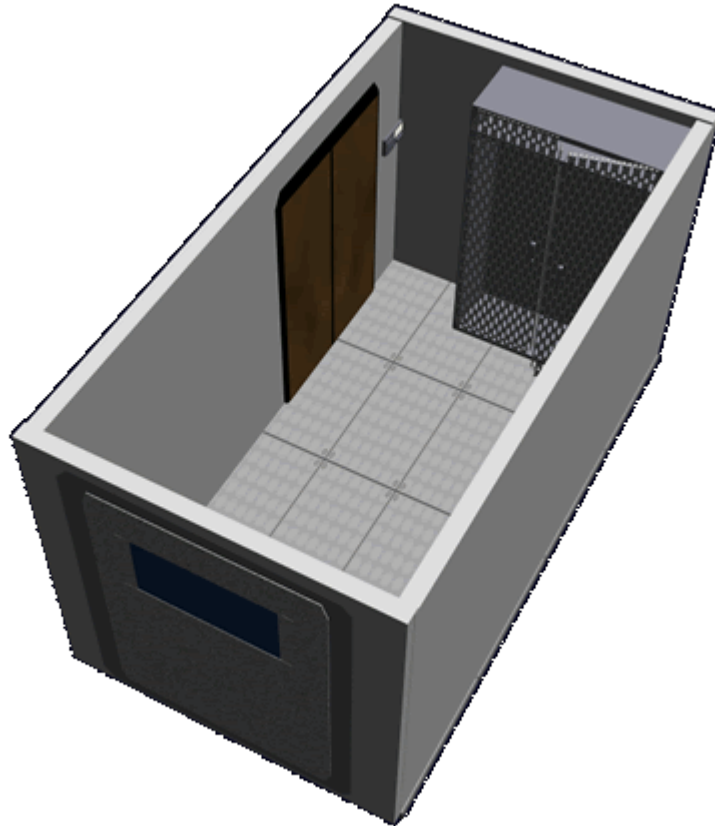


Geshrinari Airlock

Because personnel must exit a spacecraft to perform extra-vehicular activities. [Geshrinari Shipyards](#) ships are equipped with airlocks that provide a safe means of transitioning from the interior to the exterior [Geshrinari Shipyards](#) airlocks typically come in two or four person styles. Usually located near the airlock is a [Geshrinari Ship's Locker](#).

Regardless of configuration all Geshrinari airlocks have the following features:



Control System

A [Ge-Y1-E3103 - Intercom System](#) panel mounted on the wall of the chamber serves as the airlock control panel. This controls venting and pressurizing the airlock as well as opening the two doors. The panel also facilitates talking to those inside the airlock. Depending on conditions beyond the external door, the lock will switch from white to red illumination when cycling.



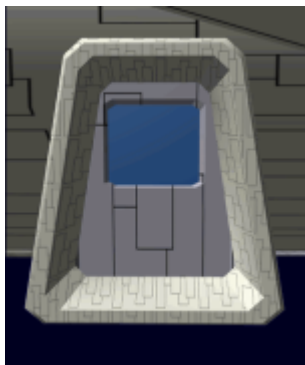
A secondary control panel is located in the ship's interior next to the Interior door that allows cycling the airlock.

There is an emergency manual control on the exterior of the hull to allow opening the exterior door when power is not available. Use of this mechanism vents the atmosphere inside the airlock. Attempting to use this when the ship has power will trigger a security alarm, but the control can not unlock the hatch.

There is also an emergency manual control in the pressure chamber to allow manual cycling of the airlock.

External Pressure Door

The pressure door is built to withstand great pressure and damage. The exterior door is composed of the same materials as the ship's outer hull. The door has a thin layer of gasket material. When the door slides closed, pneumatics then push the door creating an airtight seal. Some external doors are equipped with a window.



Pressure Chamber

This chamber is the space between both doors. This room is designed so that the walls, floor and ceiling are reinforced to resist hard vacuum. There is typically more than one storage locker for storing EVA equipment. The pressure chamber is equipped with white and red lamps.

Interior door

The interior door is a [standard shutter](#).

From:

<https://wiki.stararmy.com/> - **STAR ARMY**

Permanent link:

https://wiki.stararmy.com/doku.php?id=corp:geshrinari_shipyards:compartments:airlock

Last update: **2023/12/21 04:20**

