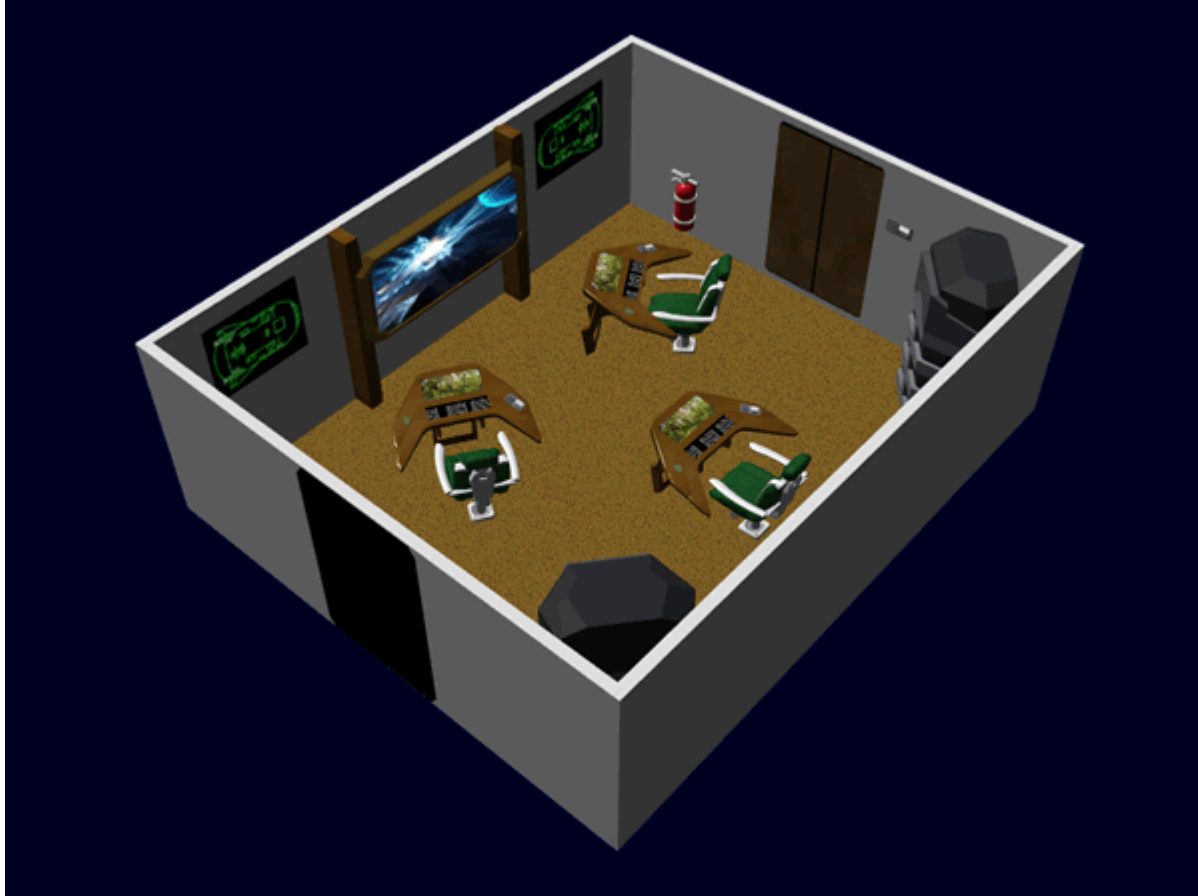


Geshrinari Compact Bridge

The Compact Bridge is new offering from [Geshrinari Shipyards](#) for small starships. It was first featured on the [Ge-Y2-1a - Hanto-Class Starship](#) in YE 33.



There is a [standard ship's door](#) on either side of the bridge, and two damage control lockers. A large display screen is mounted in the front and can be controlled from any station. On either side of the main display is a ship's status screen. There is ceiling mounted lighting, as well as [Ge-Y1-E3104 - Automatic Fire Suppression System](#) dispersal nozzles. The floor is typically covered a stain-resistant light brown loop pile rug. There are a pair of [Fire Extinguisher](#) s mounted on either side of the bridge. There are a pair of [Geshrinari Damage Control Station](#) in the rear of the bridge.

Stations

There are three [standard consoles](#) which comprise the bridge stations.

The stations are the following:

Helm

This station is where the pilot of the ship flies the ship, and controls the weapon systems.

Nav / Systems

This dual function station provides both ship course/navigation, system monitoring. Typically this station monitors the interior of the ship, making sure all components are operating within normal conditions. During combat in addition to internal monitoring, it also monitors shield integrity, and tracks hostile craft.

Command

This is where the Captain of the ship sits. It has the ability to monitor all aspects of the ship.

From:
<https://wiki.stararmy.com/> - **STAR ARMY**

Permanent link:
https://wiki.stararmy.com/doku.php?id=corp:geshrinari_shipyards:compartments:compact_starship_bridge

Last update: **2023/12/21 04:20**

