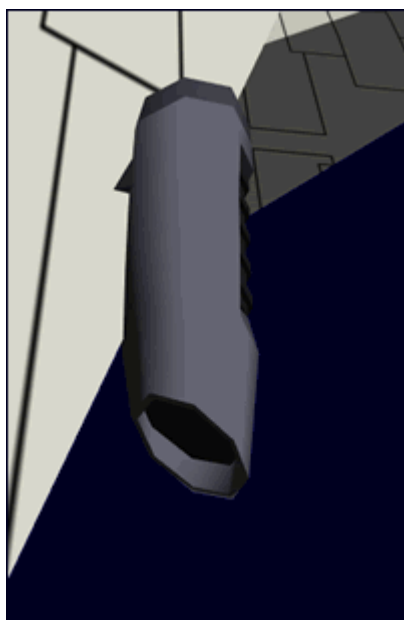


# Ge-C1-W3300 - Torpedo Launcher



The Ge-C1-W3300 Torpedo Launcher was developed by [Geshrinari Shipyards](#) for use on the [Urufu-Class Light Cruiser](#) in [YE 33](#)



When not in use the end of the tube is closed for safety. The interior of the launcher connects to the torpedo autoloader which transfers the torpedo to or from the [magazine](#). The launcher can hold a maximum of three torpedoes. One of the torpedoes sits in the firing position, and two more in the holding rack. This allows the tube to maintain a rate of fire of one torpedo every fifteen seconds.

From:  
<https://wiki.starmy.com/> - **STAR ARMY**

Permanent link:  
[https://wiki.starmy.com/doku.php?id=corp:geshrinari\\_shipyards:component:ge-c1-w3300](https://wiki.starmy.com/doku.php?id=corp:geshrinari_shipyards:component:ge-c1-w3300)

Last update: **2023/12/21 04:20**

