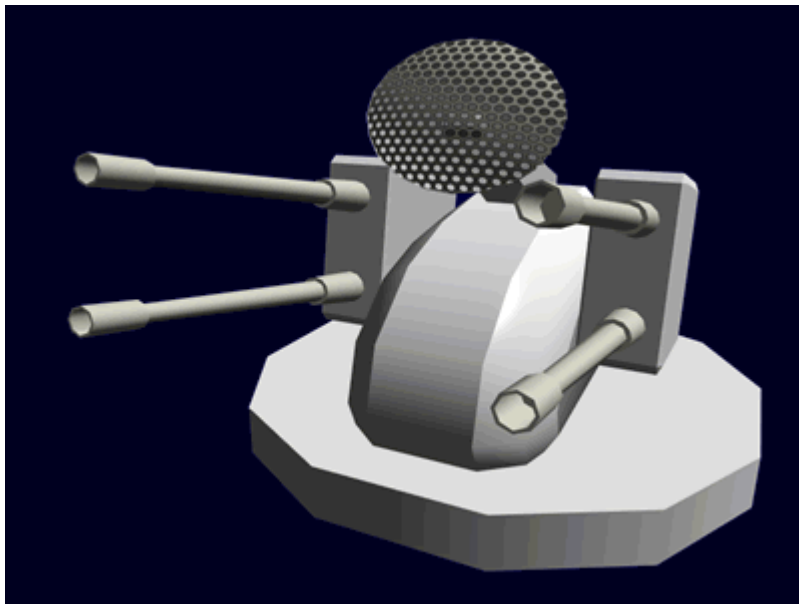


Ge-Y2-W3300 - Anti-Armor Turrets



The Ge-Y2-W3300 is the [Geshrinari Shipyards](#) latest ship defense system. Built for the [Ge-Y2-1a - Hanto-Class Starship](#), it became available in [YE 33](#).

Its purpose is to shoot down attacking fighters, incoming missiles. It features four cannons and a built-in tracking system that allows it to track and lock onto targets. It can be operated remotely by the crew using the ship's sensors or or autonomously using its own.



Details


Class: Anti missile/armor Nomenclature: Ge-Y2-W3300 Type: Weapon Designers: [Geshrinari Shipyards](#)
Manufacturer: [Geshrinari Shipyards](#) **Price:** 1,750 KS

Specifications

Max Range (space): 1 light second, 300,000 kilometers {186,282 miles} Max Range (atmosphere): 300 kilometers {180 miles}

Rate of fire: Once every 10 seconds

Damage

- [Damage Rating \(Version 3\)](#): Tier 9, Heavy Anti-Mecha/Tier 8 or Tier 9, Medium Anti-Mecha or Heavy Anti-Mecha ( **Fix Me!**): Staff needs to determine which)
- [Damage Rating \(Version 3\)](#): Heavy anti-mecha (9)

From:
<https://wiki.stararmy.com/> - **STAR ARMY**

Permanent link:
https://wiki.stararmy.com/doku.php?id=corp:geshrinari_shipyards:component:ge-y2-w3300

Last update: **2023/12/21 04:21**

