

Ge-V1-1a - Hoshou Fighter

The Ge-V1-1a - Hoshou Fighter was originally manufactured to provide security at [Tamahagane Corporation](#) space-based installations. It became available in [YE 33](#). The version of this ship re-designed for disaster recovery operations is the RDRS Ge-V1-2a - Hoshou Fighter



About the Hoshou

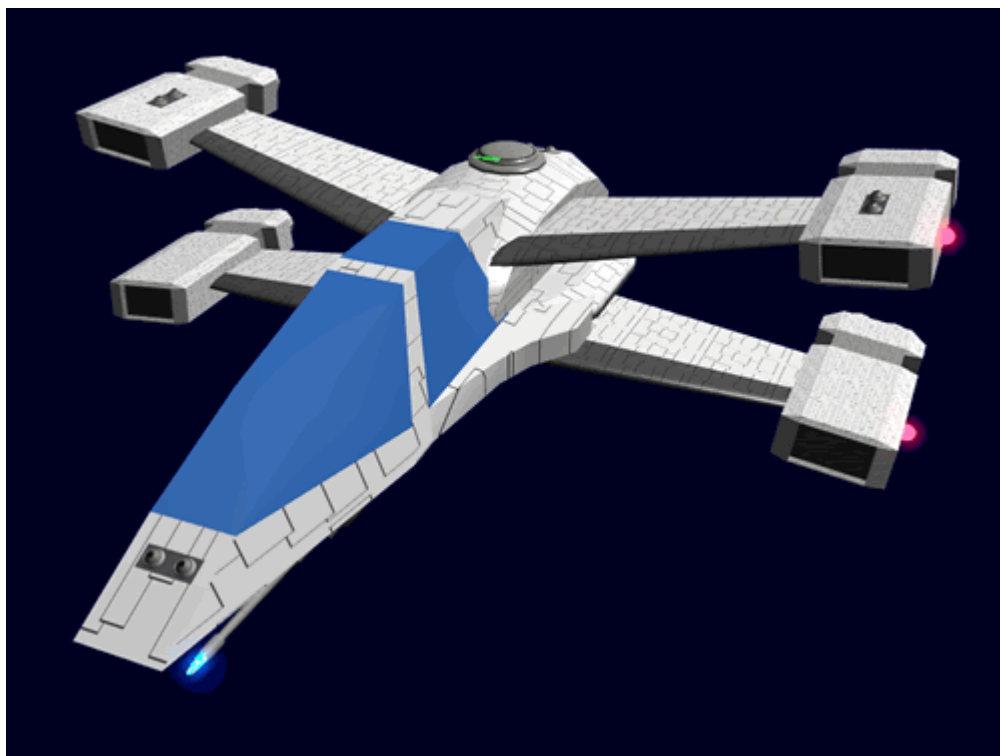
The Hoshou *Security* is purely an STL space fighter. It was developed at the request of [Tamahagane Corporation](#). The Hoshou was built for speed and maneuverability. It is a dual seat fighter that is intended to patrol around a space facility. It is equipped with extra sensors to help check inbound ships, debris and space objects.

History

In [YE 33](#) after the parasite attack in [Kyoto](#) the [Tamahagane Corporation](#) took a look at their security methods for their various facilities. They felt the need to have a small armed craft to help them provide security screening for their facilities located in space. The requirement was to keep the fighter as simple as possible, it has no FTL capability, and features mostly existing technology. Because the craft was to help screen incoming objects it was given specialized sensors.

Appearance

The Hoshou has four engine pods with two [Geshrinari Turbo Plasma Drive](#) in each. They are mounted on fixed struts to make them better suited for making rapid turns. The fuselage is in the center of the four struts. The cockpit is located forward of the struts and the power plant and other systems are located between them. The laser defense turrets are visible just aft of the struts. The plasma cannons can be seen beneath the cockpit.



Statistical Data

General

Class: *Hoshou*-class Nomenclature: Ge-V1-1a Type: Fighter Designers: [Tamahagane Corporation R&D](#)
Manufacturer: [Geshrinari Shipyards](#) **Price:** 24,000 [KS](#) (Without customization)

Crew and Accommodations

Pilot: 1 **Observer:** 1

Dimensions

Length: 4.33 meters (14.2 feet) Width: 6 meters (19.68 feet) Height: 1.66 meters (5.44 feet)

Propulsion

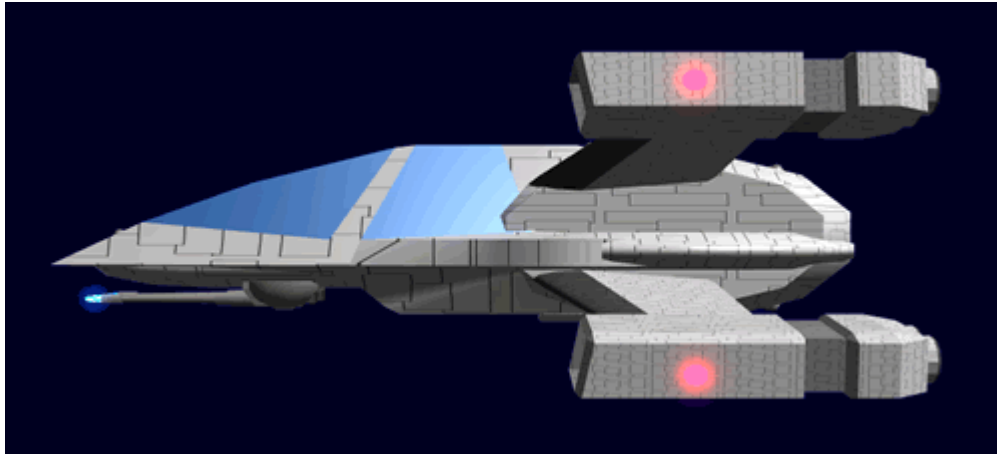
Sublight Engines: 112,422 km/sec (31,228 miles/sec) .375c **Thrusters:** Launch and Recovery
Atmospheric: Not intended for atmospheric travel

Damage Capacity

See [Damage Rating \(Version 3\)](#) for an explanation of the damage system.

- Hull: 12 SP (Armor and Vehicle Scale)
- Shields: 15 (Threshold 2)

Inside the Hoshou



Cockpit

The Cockpit of the *Hoshou* has these features:

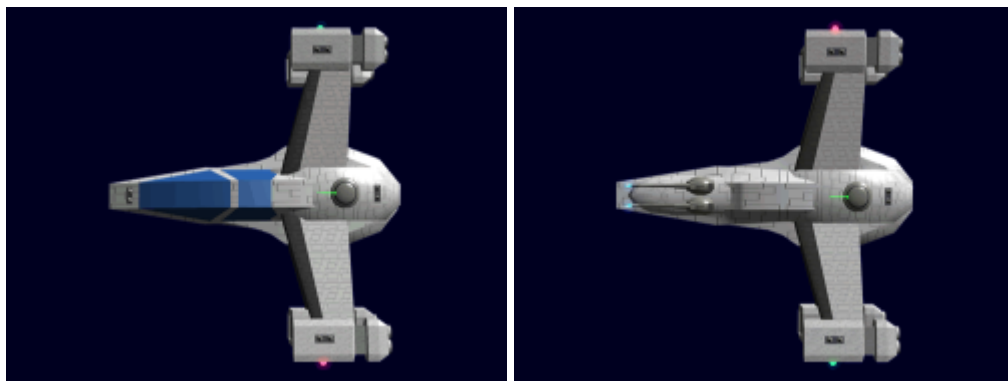
- 2 pilot couches with five point restraint harness.
 - Pilot
 - Observer
- Physical controls for all systems
- 2 Ejection rockets with a 30 second burn.
- Emergency subspace locator beacon with manual kill switch
- Emergency oxygen supply capably of connecting to the occupants [EM-G7 Emrys Environ suit](#) or [EM-G1 Emrys Dusk Suit](#), extending the suit operating time by a factor of two.
- EM-G10-2a First Aid Kit attached to cockpit interior
- 5 [Emrys Emergency Rations](#) under each seat.
- 2 EM-G9-3A Emergency Flashlight

In the event of the catastrophic damage the cockpit can separate from the fighter to serve as an escape pod.

Engineering

The rear compartment of the Hoshou where the environmental systems, CFS and power plant are located.

Systems



Armored hull

The Ge-V1 is equipped with a [GE-T1-H3300 - Spacecraft \(DO\) Hull Construction](#).

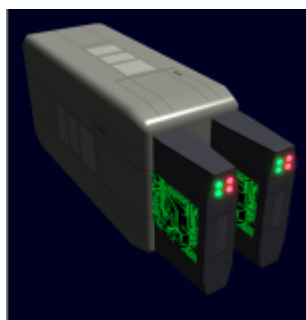
Sensors

The Ge-V1 is equipped with the following sensor systems.

- [Ge-T8-E3100 - Basic Small Craft Sensor Package](#)
- [Ge-V1-E3300 - Small Craft Life Science Sensor](#)

Computer

The Ge-V1 is equipped with a [Ge-T8-E3103 - Computer Array](#) for its computer requirements.



Communications

The Ge-V1 is equipped with a [Ge-T8-E3104 - Communications Array](#) for communications capabilities.

Environmental

The Ge-V1 uses a [Ge-T8-V3100 - Environmental System](#), to supply inertial dampening, extended lift support for the occupants.

Propulsion

The Ge-V1 uses the following propulsion systems:

- 8 [Geshrinari Maneuvering Thrusters](#) attitude control, docking and station keeping.
- 8 [Geshrinari Turbo Plasma Drive](#) for STL travel

Ge-V1-S3300 Shielding

The Ge-V1 is equipped with [Geshrinari Combined Field System](#) shielding

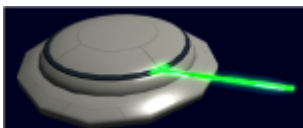
Weapons

See [Damage Rating \(Version 3\)](#) for an explanation of the damage system.

- 2 [Ge-V1-W3300 - Pulse Plasma Cannon](#) 1 SDR

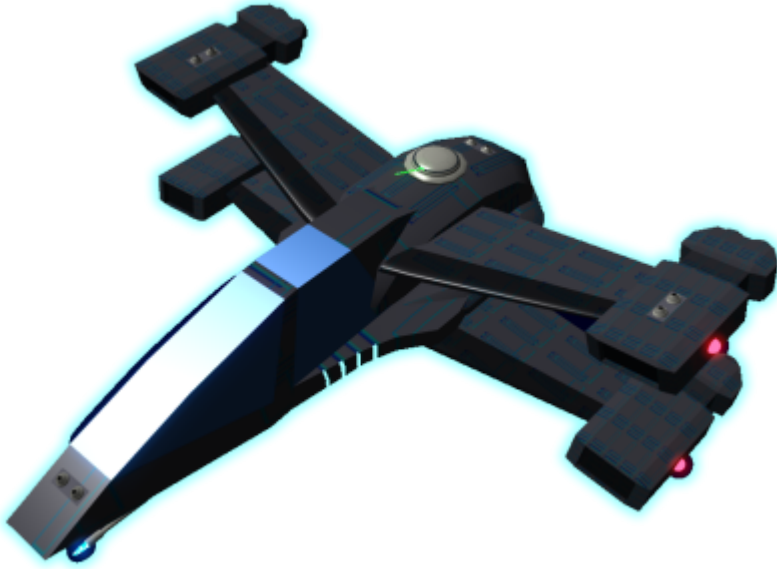


- 2 [Ge-V1-W3301 - Defensive LASER](#) 2 ADR



Disaster Recovery Version

The redesigned Disaster Recovery version of this ship is the RDRS Ge-V1-2a - Hoshou Fighter pictured below:



This [Rapid Disaster Response Service](#) version of the vessel accompanies disaster recovery operations, providing protection for refugees and emergency responders.

OOC Notes

- Artwork by [Nashoba](#).

Products & Items Database	
Product Categories	small craft
Product Name	Hoshu Fighter
Nomenclature	Ge-V1-1A
Manufacturer	Geshrinari Shipyards
Year Released	YE 33
Price (KS)	24,000.00 KS

From:
<https://wiki.stararmy.com/> - **STAR ARMY**

Permanent link:
https://wiki.stararmy.com/doku.php?id=corp:geshrinari_shipyards:ge-v1_fighter

Last update: **2024/02/21 18:57**

