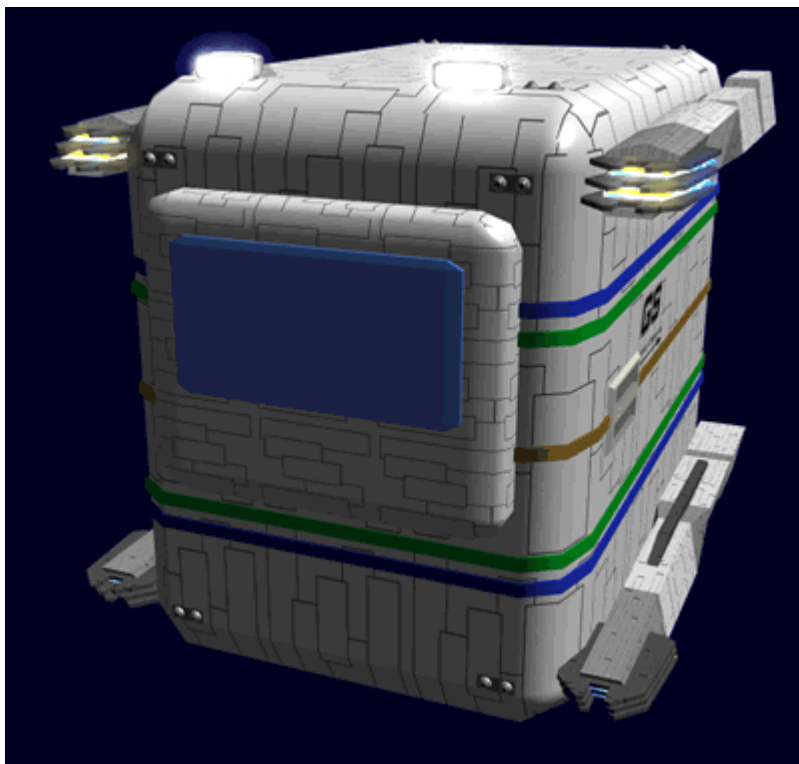


# Ge-T3-1a - Raba-Class Work-Pod



The Ge-T1-1a Raba-class Work-Pod is a [Geshrinari Shipyards](#) utility craft for use at the orbital facilities. It became available in [YE 33](#).



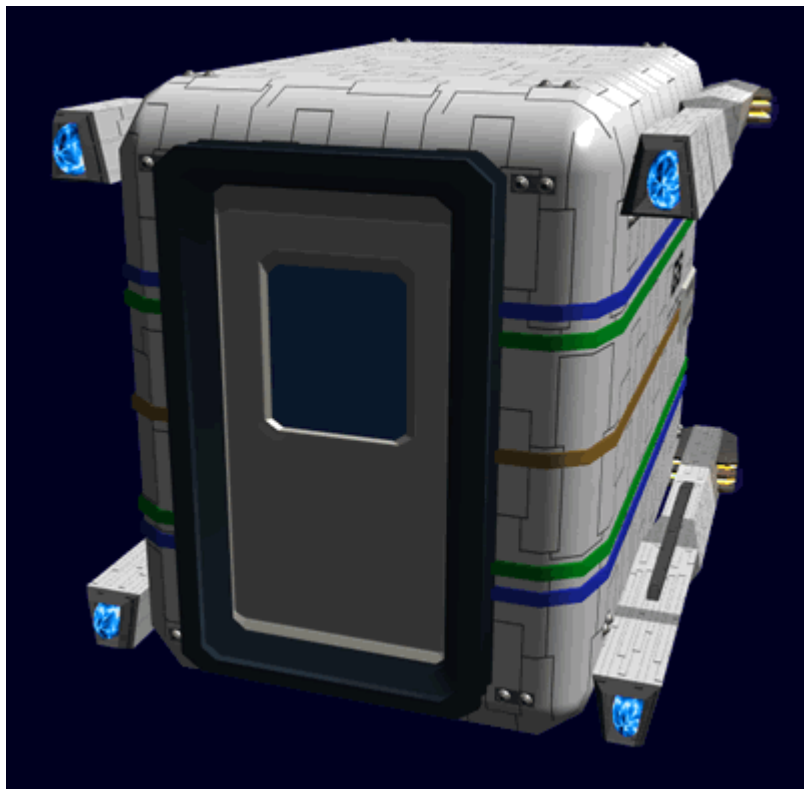
## About the Raba-class

The Raba is a utility craft, designed only for operation in space. The can be used to ferry small groups of personnel to a location. By attaching a pair of manipulators, the Raba can be used to move objects or even perform cutting operations keeping the operator safe. Raba means mule in [Yamataian](#)

## Appearance

The Raba is a rectangular craft with four micro CDD and heavy Ion thrusters attached to the sides. There is a large reinforced, self-polarizing window for the operator to visually survey the work area. On the rear

of the Raba is a door. This allows the Raba to allow personnel to egress the craft. It is fitted with a docking collar which allows the Raba to connect to any standard airlock. On either side of the Raba the armature mounting points can be seen.



## Statistical Data

### General

- Organization: [Geshrinari Shipyards](#)
- Type: Raba-Class
- Class: Utility Craft
- Nomenclature: Ge-T3-1a
- Designer: [Geshrinari Shipyards](#)
- Manufacturer: [Geshrinari Shipyards](#)
- **Price:** 8,000 [KS](#)

### Crew and Accommodations

Crew: 1 **Passengers:** 6

## Dimensions

Length: 2.5 meters ( 8.2 feet) Width: 2 meters ( 7.6 feet) Height: 2 meters ( 7.6 feet)

## Propulsion and Range

### Speeds

- **Sublight Engines:** .01 c 1,331 km/sec 832 miles/sec
- **Ion Thrust:** limited to 4G acceleration

## Durability and Maintenance

**Operating Time:** The Raba carries enough fuel for the [Geshrinari Fusion Generator](#) to operate for 120 hours of continuous power at normal levels.

**Service Lifespan:** Estimated 20 years of constant use, possibly longer with refits.

Refit Cycle: Frequent minor updates through the [Geshrinari Shipyards](#) system and a refit once every four to five years.

## Damage Capacity

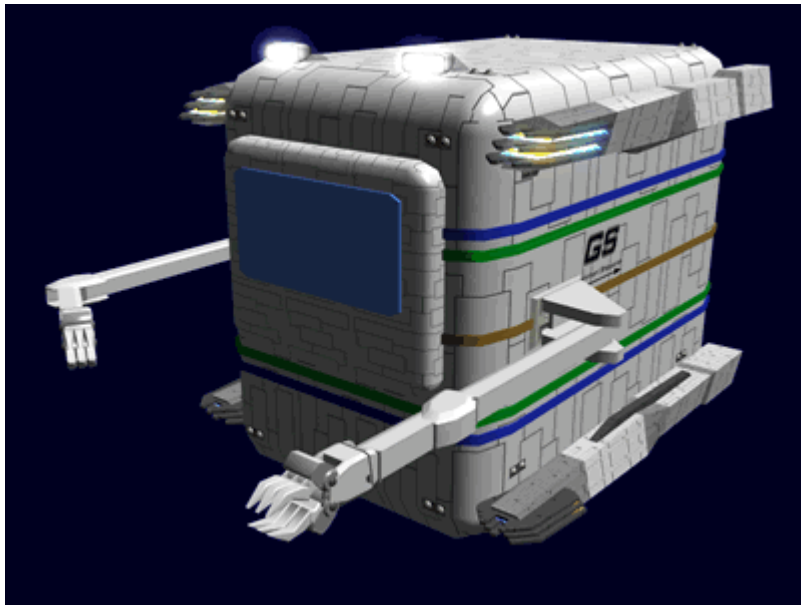
See [Damage Rating \(Version 3\)](#) for an explanation of the damage system.

Hull: 16 ADR

## Inside the Raba

The Raba interior is a single compartment. There is an atmospheric containment force-field that allows the operator to keep an atmosphere when personnel are exiting. The Raba is typically operated in a low gravity mode, and the operator is kept in place by a restraint harness.

## Systems



## Hull

The Raba is built with a [GE-T3-H3301 - Spacecraft \(OD\) Hull Construction](#) hull.

## Life Support

The Raba is equipped with a [Ge-T8-V3100 - Environmental System](#).

## Sensors

The Raba is equipped with a [Ge-T8-E3100 - Basic Small Craft Sensor Package](#).

## Computer

The Raba is equipped with a [Ge-T8-E3103 - Computer Array](#).

## Communications

The Raba is equipped with the [Ge-T8-E3104 - Communications Array](#), the subspace feature is disabled.

## Propulsion

The Raba is equipped with the following propulsion systems.

## Maneuvering Thrusters

The Raba has twenty-four [Geshrinari Maneuvering Thrusters](#).

## CDD/Ion drives

The Raba has four [Ge-T3-P3300 - CDD/Ion drive modules](#). The Raba carries enough fuel for the Ion drive for ninety minutes of thrust.

## Power

The Raba is equipped with a [Geshrinari Fusion Generator](#) to power the craft.

## Equipment

- [EM-G17-1a Basic Tool Kit](#)

## OOC Notes

- Artwork by [Nashoba](#).

Products & Items Database	
Product Categories	small craft
Product Name	Reba-Class Workpod
Nomenclature	Ge-T3-1A
Manufacturer	<a href="#">Geshrinari Shipyards</a>
Year Released	<a href="#">YE 33</a>
Price (KS)	8,000.00 KS

From:

<https://wiki.stararmy.com/> - **STAR ARMY**

Permanent link:

[https://wiki.stararmy.com/doku.php?id=corp:geshrinari\\_shipyards:ge\\_t3\\_raba](https://wiki.stararmy.com/doku.php?id=corp:geshrinari_shipyards:ge_t3_raba)

Last update: **2024/02/19 18:55**

