

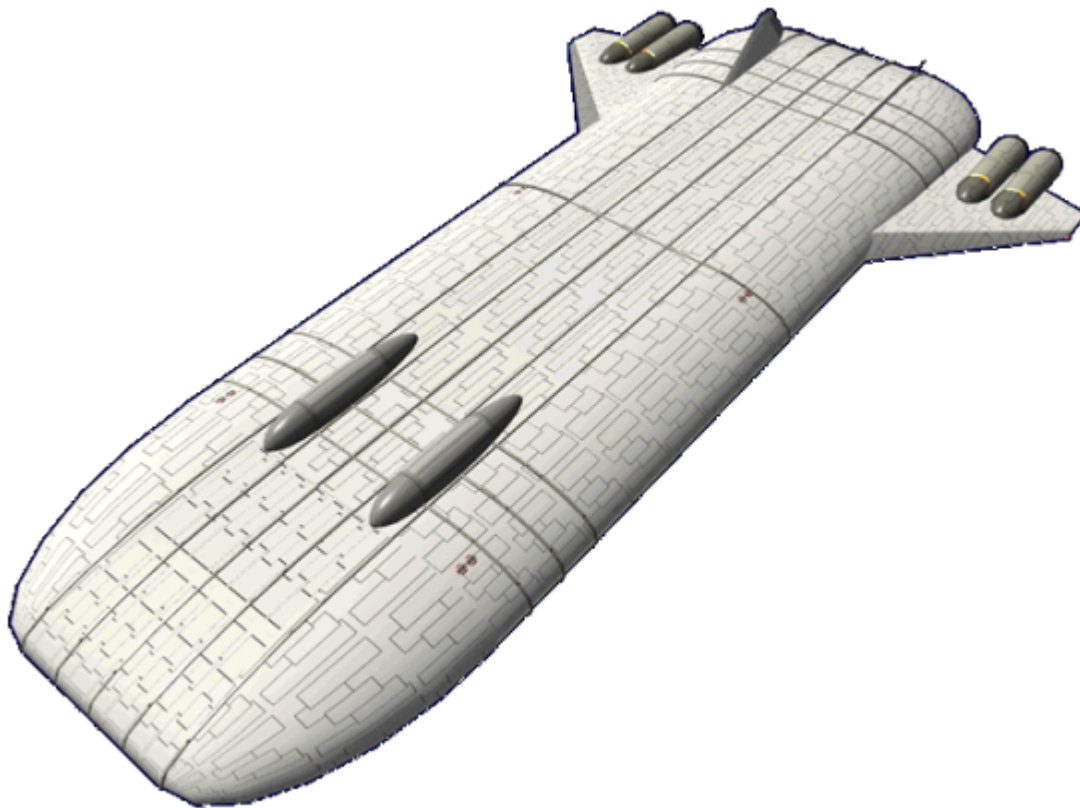
# Ge-L6-1a - Taishita-Class (Heavy Freighter)

The Ge-L6 is a heavy size freighter, designed to carry as much cargo as possible with some consideration for passengers. It became available in [YE 34](#). The version of this ship re-designed for disaster recovery operations is the [RDRS Ge-L6-2a - Jihi Class Freighter](#).

# GS

Geshrinari Shipyards

A Yamahagane Company



## About the Taishita

### History

During the months after [Battle of Yamatai](#), the corporation saw that there was a need for larger freighters than they currently offered. The *Taishita-Class* design is larger than any other currently available design

in the Empire. The initial plan for the large freighters was to help with the massive food shipment effort.

## Appearance

The *Taishita-Class* shape is that of a rounded rectangle with a tapered bow. It has two wings to which the four [turbo-plasma drives](#) are attached. The wings and the two vertical stabilizers help with the ship's performance in the atmosphere. On the top of the hull are two rounded protrusions which is where the ship's small craft for cargo transfer are housed. Additionally on the top the eight escape pod launch points can be seen by their covers. On the bottom of the ship the twelve [graviton engines](#) used for lift off and landing and low level atmospheric travel can be seen.

## Specifications

### General

Class: *Taishita-class* Nomenclature: Ge-L6-1a Type: Freighter, Heavy Designers: [Tamahagane Corporation](#) R&D Manufacturer: [Geshrinari Shipyards](#) **Price:** 300,000 **KS** (Without customization)

### Crew and Accommodations

Crew: 100 **Passengers:** 30 Maximum Capacity: There are accommodations for 260 personnel with double occupancy. **Emergency Capacity:** 500 people can fit aboard in an emergency, but the ship would be extremely cramped.

### Speeds

The *Taishita* is not built for agility.

- **Atmospheric:** 2,4250 km/h, or 1,522.4 mph (Mach 2)
- **Combined Field System/Continuum Distortion Drive:**
  - **Minimum:** Resting motionless
  - **Sublight:** .3c (~89,937 kilometers per second) (~55,884 miles per second)
  - **Maximum Speed:** 18,750c (~2.14 ly/h)
- **Hyperspace Drive:** 394,470c (0.75 ly/m)

### Durability and Maintenance

**Service Lifespan:** Estimated 20 years of constant use, possibly longer with refits.

Refit Cycle: Frequent minor updates through refits once every four to five years.

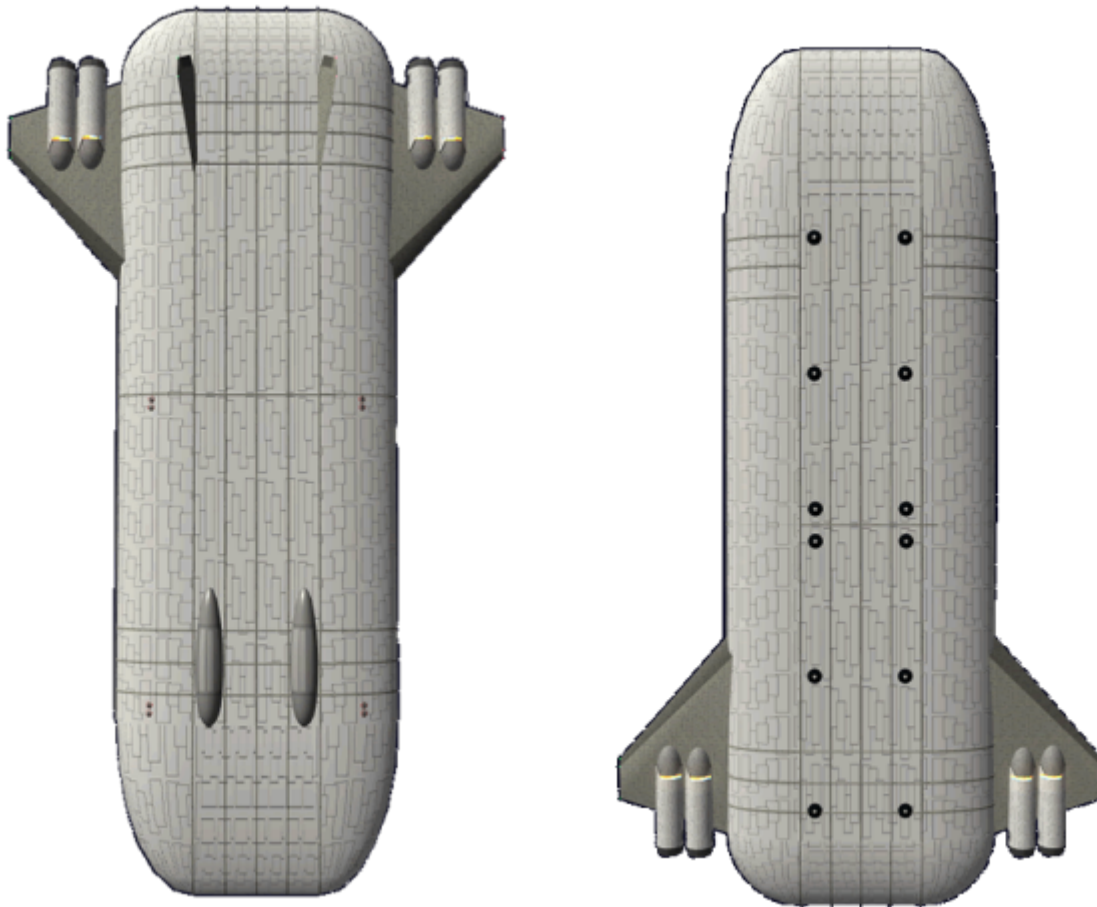
## Damage Capacity

See [Damage Rating \(Version 3\)](#) for an explanation of the damage system.

- Hull: 32
- Shields: 40 (Threshold 4)

## Dimensions

Length: 590 meters (1936 feet) Width: 195 meters (640 feet) Height: 60 meters (197 feet) Decks: 10 (4 meters each)



## Inside the Taishita-Class



This table gives the designation of each deck; beneath it is the description and purpose of each deck.

Deck	Name
Zero	<a href="#">Over Deck</a>
One	<a href="#">Crew Deck</a>
Two	<a href="#">Flight Deck</a>
Three	<a href="#">Hold Deck A/1</a>
Four	<a href="#">Hold Deck A/2</a>
Five	<a href="#">Hold Deck A/3</a>
Six	<a href="#">Hold Deck A/4</a>
Seven	<a href="#">Hold Deck B/1</a>
Eight	<a href="#">Hold Deck B/2</a>
Nine	<a href="#">Hold Deck B/3</a>
Ten	<a href="#">Support Deck</a>

## Crew Deck

Located at the top of the ship, Crew Deck is dedicated to the care and well being of the crew. It houses the [crew quarters](#), the [common baths](#) and [toilets](#). Located in the stern are the [laundry rooms](#). Located in the center of the deck is the [fitness area](#) and [lounge](#).

The deck has three [corridor](#) that run the length of the ship, the center one is referred to as *Mainway*, the other two are referred to as *Portway* and *Starboardway*. These hallways exist on both decks one and two. Stairwells and lifts allow movement vertically between deck one and two. There are also four passages that run from port to starboard, at each juncture there is a [Damage Control Station](#). Located on this deck are the escape pod stations.

## Flight Deck

The second deck is referred to as the flight deck. It is where the command operations of the ship are located. In the forward part of this deck, the [passenger quarters](#) are located. The [Dining Room](#), [Galley](#) with [Scullery](#) and [Passenger Lounge](#), [common restrooms](#) are next on the deck.

The [bridge](#), [computer room](#), [medical bay](#), [Crew Lounge](#), [common restrooms](#).

The deck has three [corridor](#) that run the length of the ship, the center one is referred to as *Mainway*, the

other two are referred to as *Portway* and *Starboardway*. These hallways exist on both decks one and two. There are also four passages that run from port to starboard.

## Hold Deck A/1

This is dominated by [Hold A](#), located in the front of the ship is the sensor array. The sides of the deck have walkways that go around the cargo elevator shafts. The forward section is the upper portion of the [large shuttle bay](#). The aft section of the deck is the upper portion of the [Geshrinari Life Support Room](#).

## Hold Deck A/2

This is dominated by [Hold A](#), located in the front of the ship is the sensor array. The sides of the deck have walkways that go around the cargo elevator shafts. The forward section is the lower portion of the [large shuttle bay](#). The aft section of the deck is the lower portion of the [Geshrinari Life Support Room](#).

## Hold Deck A/3

This is dominated by [Hold A](#), located in the front of the ship is the sensor array. The sides of the deck have walkways that go around the cargo elevator shafts. The aft section of the deck is the upper portion of the [Engineering](#).

## Hold Deck A/4

This is dominated by top of [Hold B](#), located in the front of the ship is the sensor array. The sides of the deck have walkways that go around the cargo elevator shafts. The aft section of the deck is the lower portion of the [Engineering](#).

## Hold Deck B/1

This is dominated by the upper portion of [Hold B](#), located in the front of the ship is EVA area. It is fitted with two large airlocks. A small [Armory](#) is located next to the [Ship's locker](#). The sides of the deck have walkways that go around the cargo elevator shafts. The cargo bay doors are lined up with the elevator shafts. The aft section of the deck is the storage space for use by the crew separate from the cargo hold. This is where provision and other consumables are kept.

## Hold Deck B/2

This is dominated by middle of [Hold B](#), located in the front of the ship is the [Geshrinari Fabrication Area](#). The sides of the deck have walkways that go around the cargo elevator shafts. The cargo bay doors are lined up with the elevator shafts. The aft section of the deck is the lower portion of the [Vehicle Bay](#).

## Hold Deck B/3

This is dominated by bottom of [Hold B](#), located in the front of the ship is the [Geshrinari Fabrication Area](#). The sides of the deck have walkways that go around the cargo elevator shafts. The cargo bay doors are lined up with the elevator shafts. The aft section of the deck is the lower portion of the [Vehicle Bay](#).

## Support Deck

Located at the bottom of the ship, the Support Deck houses the *Taishita's* landing gear, the [Graviton Engines](#), and the equipment for operating the twelve cargo elevators. Also this is where the water tanks are for the environmental system, and the emergency reserves of atmosphere gases.

## Over Deck

Located above deck one is the over deck. It houses the two [Utility craft berths](#), referred to as Spider Nests.

# Compartments

## Bridge

- [Large Bridge](#)

## Computer

- [Computer Room](#)

## Crew Related

- 50 [Crew Quarters](#)
- 15 [Passenger Quarters](#)
- 6 [Laundry room](#)

## Baths

- 4 [Common bath](#)
- 8 [Common toilet](#)

## Engineering

- [Engineering](#)
- [Life Support](#)
- [Fabrication Area](#)
- [Damage Control Station](#)
- [Maintenance Conduit](#)

## Emergency

- [Emergency Supply Station](#)
  - [Geshrinari Damage Control Station](#)

## Medical

- [Medical Bay](#)

## Social

- [Dining Room](#)
- [Lounge](#)
- [Galley](#)
- [Scullery](#)
- [Fitness](#)

## Utility

- [Airlock](#)
- [Corridor](#)
- [Shuttle Bay](#)
- [Vehicle Bay](#)

## Utility Craft Berths

These tear drop shaped chambers are located on the top of the *Taishita*. These chambers feature clam-shell doors on the top that open to allow the utility craft to exit and enter. The berth is twenty meters wide at the widest, ten meters high at the apex, and sixty meters long.

Each berth is capable of holding 36 [Ge-T4-1a - Kumo-Class CTU](#). This gives the *Taishita* a total capacity of 72.

During launch and recovery once the clam-shells are opened, an atmospheric shield is maintained to allow personnel to enter and exit the [Ge-T4-1a - Kumo-Class CTU](#). Because of the craft are *Kumo* or

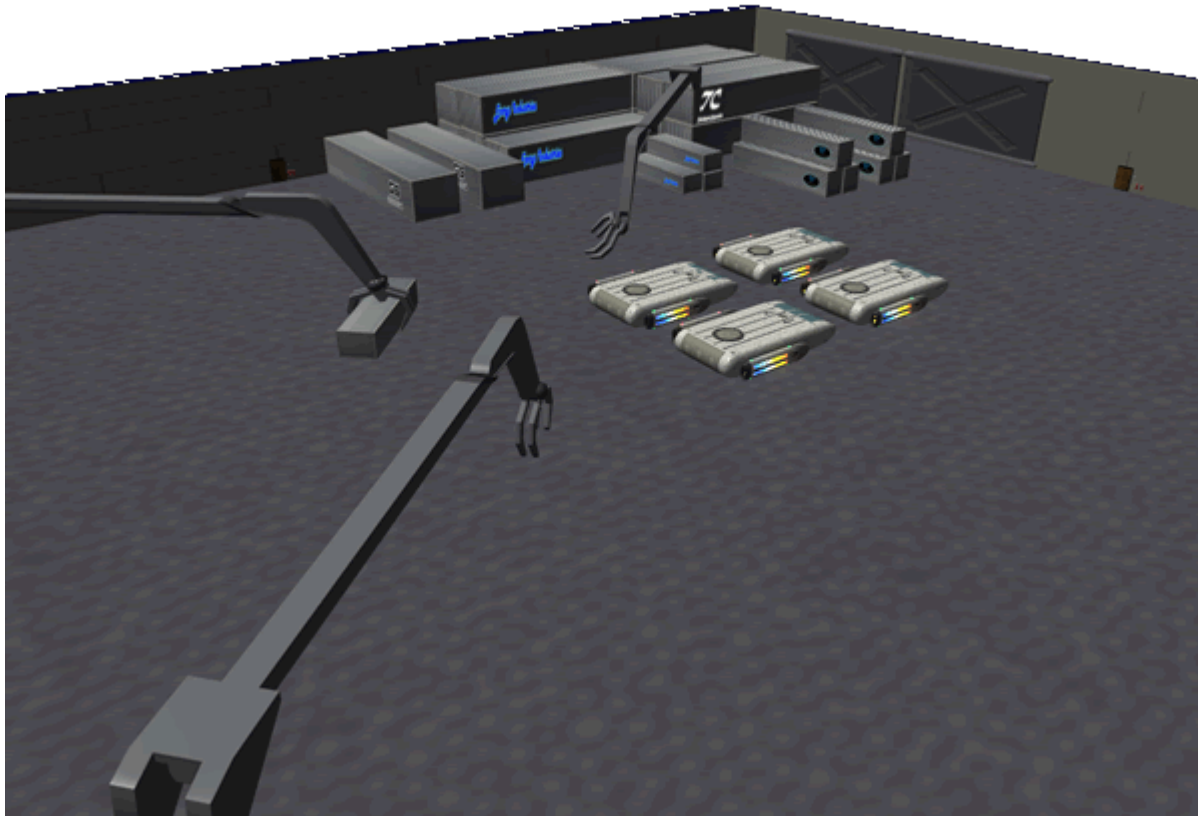
Spider, the berths are also referred to as Spider Nests.

## Storage

- [Ship's locker](#)
- [Cargo Area](#)
- [Armory](#) maybe

## Cargo Holds

The heart of the *Taishita-Class* is the two large isolated cargo bays. Around them is crew space, and there are an array of cargo elevators for raising and lowering [Standard Starship Cargo Containers](#). Each hold is divided into three sections of 110 meters, and each has four elevators. Isolation force fields are placed at the dividing points in the event of hull breach. There are tie-down points on the floor to secure odd shaped cargo, and there are robotic arms and cranes that move the containers into position.



The elevators are 21 meters long, 10 meters deep, and 4.5 meters high. For cargo being loaded into hold B the cargo rolls through the elevator. The elevators are for mainly raising the cargo to Hold A.



## Hold A

### Dimensions:

- 16 meters high
- 140 meters wide
- 330 meters long

### SSCC Capacity:

- Huge: 1,664
- XL: 5,913
- Large: 13,306
- Medium: 26,612

## Hold B

### Dimensions:

- 12 meters high
- 140 meters wide
- 330 meters long

### SSCC Capacity:

- Huge: 1,248
- XL: 4,436
- Large: 9,980
- Medium: 19,959

## Escape Pod Stations

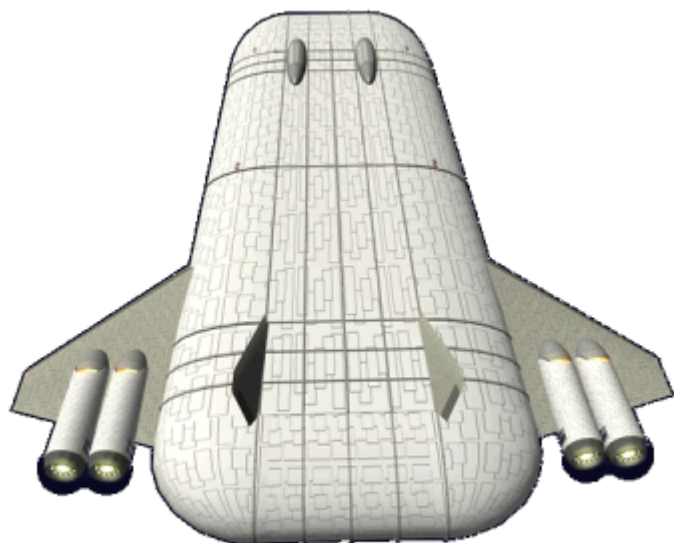
The *Taishita* features a unique feature. Instead of having [Ge-X3300 - Type 33 Escape Pod](#) scatter all over the ship, they have four stations where customers get aboard escape pods. Once a pod is full it is launched, and another pod rises into position and the exterior door opens. Each shaft can hold up to eight pods and there are two shafts per station. This gives the ship a maximum capacity of 384 persons in the escape pods.

However, under normal circumstances the *Taishita* typically only carries 26 pods.

## Support Deck

This is the bottom of the ship, it houses the *Taishita's* landing gear, the Geshrinari Graviton Engine, and the equipment for operating the twelve cargo elevators.

## Systems



### Computer

The *Tashita 1a* uses a [Ge-Y2-E3300 - Hogosha Quantum Computer System](#) for all its computation needs.

The *Tashita 1b* uses a [MEGAMI](#) for all its computation needs.

### Communications

Communications on the *Taishita* uses the [Ge-Y1-E3103 - Intercom System](#) for internal, and [Ge-Y2-E3302 - Communications Suite](#) for external.

### Life Support

The life support requirements for the *Taishita* are supplied by a pair [Ge-Y1-V3100 - Life Support System](#).

### Emergency Systems

The *Taishita* features the following emergency systems.

- [Ge-Y1-E3104 - Automatic Fire Suppression System](#)
- [Geshrinari Blast Shutters](#)

- 26 [Ge-X3300 - Type 33 Escape Pod](#)

## Security

The *Taishita* has the following standard security features.

- [Geshrinari Standard Door](#)
- [Geshrinari Psionic Signal Controller](#)

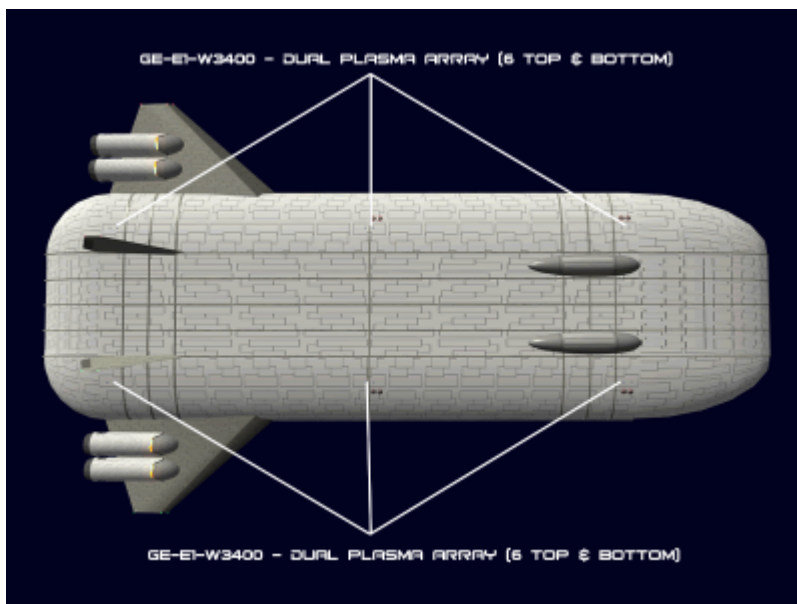
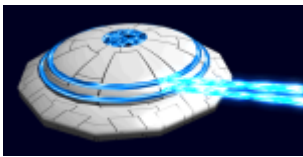
## Sensors

The *Taishita* uses the [Ge-Y2-E3301 - Standard Starship Sensors](#) for its sensor requirements.

## Weaponry

The weapon systems of the *Taishita* are controlled by a [Ge-Y2-E3306 - Fire Control System](#). They protect the ship from those who would attempt to prey upon it. They are arranged in pairs in twelve locations.

- 24 [Ge-E1-W3400 - Dual Plasma Array](#) Single: 3 ADR / Paired 1 SDR / 5 ADR



While not a true weapon the *Taishita* is equipped with a pair of [Geshrinari Graviton Beam Projectors](#), they are each mounted amidships on the side.

## Propulsion

The *Taishita* has a variety of engines to help it operate safely.

It uses 12 [Geshrinari Graviton Engine](#) which are used for landing and lift off and lower level atmospheric travel.

It has clusters of [Geshrinari Maneuvering Thrusters](#) located along the hull on the ship's axes. These are used for docking maneuvers and station keeping.

It is equipped with four [Geshrinari Turbo Plasma Drive](#) mounted on the atmospheric wings, they are for in system travel.

It is equipped with a [Geshrinari Continuum Distortion Drive](#) and a [Geshrinari Hyperspace Fold Drive](#) for FTL travel. Typically the fold is used for long distance travel, and the CDD is for shorter distances.

## Power

The *Taishita* equipped with two power systems. Primary power is supplied by a [Geshrinari Aether Generator](#). In the event of a failure or the ship is on the ground without external power, the uses a [Geshrinari Anti-Matter Generator](#). The *Taishita* is equipped with [Geshrinari Matter Collection System](#) to refuel.

## CFS

For defense the *Taishita* is outfitted with a [Geshrinari Combined Field System](#) for its shielding.

## Armored Hulls

Because of the size of the *Taishita* the company chose to use their strongest structure for the hull [GE-V1-H3302 - Spacecraft \(OO\) Hull Construction](#).

## Landing Gear

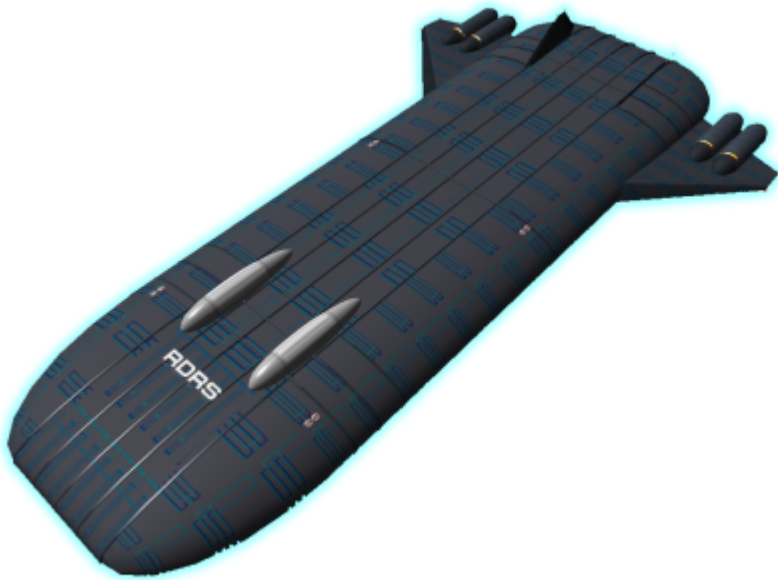
The *Taishita* was designed for planetary landing, so it is equipped with sixteen pneumatically driven landing gears. Each landing gear is independently controlled, and working in concert they can level the ship to compensate for uneven terrain.

## Vehicles

- 72 [Ge-T4-1a - Kumo-Class CTU](#)
- 8 [Ge-T1-2a - Hikiuma-Class Shuttle](#)
- 4 [Ge-E1-1a - Tenba-Class Transporter](#)

## Disaster Recovery Version

The redesigned Disaster Recovery version of this ship is the [RDRS Ge-L6-2a - Jihi Class Freighter](#), pictured below.



## OOC Notes

Authored by [Nashoba](#) Apr 10, 2012 Artwork created by [Nashoba](#) Submission Approved by [Wes](#) on Apr 11, 2012. [Forum Thread](#).

Products & Items Database	
Product Categories	starships
Product Name	Taishita-Class Heavy Freighter
Nomenclature	Ge-L6-1A
Manufacturer	<a href="#">Geshrinari Shipyards</a>
Year Released	<a href="#">YE 34</a>
Price (KS)	300,000.00 KS

Last  
update: 2024/02/21 18:44 corp:geshrinari\_shipyards:taishita\_class\_freighter [https://wiki.stararmy.com/doku.php?id=corp:geshrinari\\_shipyards:taishita\\_class\\_freighter](https://wiki.stararmy.com/doku.php?id=corp:geshrinari_shipyards:taishita_class_freighter)

---

From:  
<https://wiki.stararmy.com/> - **STAR ARMY**

Permanent link:  
[https://wiki.stararmy.com/doku.php?id=corp:geshrinari\\_shipyards:taishita\\_class\\_freighter](https://wiki.stararmy.com/doku.php?id=corp:geshrinari_shipyards:taishita_class_freighter)

Last update: **2024/02/21 18:44**

