

# Ge-E1-1a - Tenba-Class Transporter

The Tenba-Class is a small workhorse spacecraft, larger than most shuttles and smaller than most starships. It became available in [YE 34](#). The version of this ship re-designed for disaster recovery operations is the RDRS Ge-E1-1c - Tenba Class.

## About the Tenba-Class

The *Tenba-Class* or the *Pegasus-Class* is the largest aerospace craft [Geshrinari Shipyards](#) manufactures. Units sold within the Empire are designated as Tenba while those sold outside are Pegasus. It features a mixture of systems designed to keep the cost down but make the craft as durable as possible.

The most important aspect of the Tenba is the mission configurable section, or MCS. The MCS dominates the rear of the craft. The MCS is 6 meters wide, 11 meters long, and 3.5 meters tall. They are loaded by opening the rear of the craft which swings up to let them be loaded.

During the design effort the [Tamahagane Corporation](#) realized that this craft would be a good addition to its space stations to ferry personnel and equipment within system or to neighboring ones.



## History

The *Tenba-class* design was born in the days after [Battle of Yamatai](#). Airlifting supplies and personnel to devastated areas required either more standard shuttles, or more trips. For this reason [Tamahagane Corporation](#) decided to design a new utility aerospace craft. The concept was to have a vehicle that could easily configured for different missions. The vehicle was constantly referred to as a workhorse during the design stage. Since it is a flying vehicle, it was named Tenba which means winged horse or Pegasus.

The simple design helped the project proceed and prototypes were soon being field tested in emergency aid response. These prototypes were limited to atmospheric travel, but served well and helped with enhancements in the final design.

[Scientific Studies Service \(SSS\)](#) personnel working in the emergency areas seeing the early prototypes contacted the corporation regarding acquiring some for their field use.

## Appearance

The Tenba body is a flatten cylinder with a tapered front. Mounted on either side of the aft are the nacelles that house the plasma drives and the CDD. The CFS emitter is visible on the top of the ship in the center. On the bottom there are four landing skids that are visible. The appearance of the aft is a shorter more rounded aspect that the front of the vehicle. The top of the Tenba has an extension referred to as the over carriage. This is where items that would not easily fit inside were installed.

## Statistical Data

### General

Class: Tenba-Class Nomenclature: Ge-E1-1a Type: Utility Craft Designers: [Tamahagane Corporation R&D](#)  
Manufacturer: [Geshrinari Shipyards](#) **Organizations using:** [Tamahagane Corporation](#), [Scientific Studies Service \(SSS\)](#) **Price (MSRP):** 40,000 KS

- **M3402 - Cargo:** 0 KS
- **M3403 - Troop:** 2,000 KS
- **M3404 - EMS:** 12,000 KS
- **M3405 - Duration:** 6,000 KS
- **M3406 - Passnger:** 5,000 KS

### Crew and Accommodations

- **Crew:** 4 (Can be operated by a single person)
- **Passengers:** Depends on configuration

- Maximum Capacity: Depends on configuration

## Dimensions

- Length: 25.0 meters ( feet)
- Width: 14.6 meters ( feet)
- Height: 4.5 meters ( feet)
- Decks: 1 (4 meters each)

## Propulsion and Range

### Speeds

The Tenba is nimble vessel.

- **Atmospheric:** 2,450.088 kph (1,522.414 mph) Mach 2
- **Water:** 100 kph (62.137 mph)
- **Thrusters:** 0 - 1 m/s<sup>2</sup>
- **Sublight Engines:** .375c (~112,422 kilometers per second) (~69,856 miles per second)
- **Continuum Distortion Drive:**
  - **Minimum:** Resting motionless
  - **Cruising Speed:** 8,000c (.92 ly/h)
  - **Maximum Speed:** 10,000c (1.15 ly/h)

## Durability and Maintenance

**Service Lifespan:** Estimated 20 years of constant use, possibly longer with refits.

Refit Cycle: Frequent minor updates through the [Geshrinari Shipyards](#) system and a refit once every four to five years.

## Damage Capacity

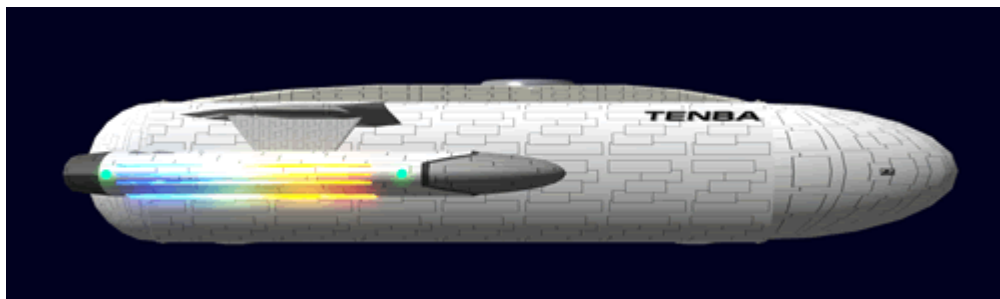
See [Damage Rating \(Version 3\)](#) for an explanation of the damage system.

Hull: 20 SP (Armor) Shields: 25 (Threshold 5)

## Inside the Tenba

The *Tenba* interior is by nature functional. Its amenities are spartan when compared to a starship. The

forward section has 2.5 meters of clearance floor to ceiling. It has variable lighting in three zones, forward, middle and rear of the main compartment.



## Sensors

The Sensor array is mounted in the over carriage.

## Flight Deck

The forward most point of the interior of the *Tenba* is the flight deck. It features four [Geshrinari Standard Console](#) setup as the following stations.

### Pilot

The center [console](#) in the front of the section is the the pilot station. From here the operator flies the craft.

### Navigation

The right front [console](#) is the navigation station. The operator here plots course and trajectories, they also control the primary sensors.

### Systems

The left from [console](#) is the System monitoring station. From here the operator can monitor all of the crafts systems, and make adjustments as well.

### Science

The furthest [console](#) on the starboard side is the Science Station. The operator can access the *Tenba's*

standard sensors as well as the [Life Science Sensor Package](#).

## Airlock

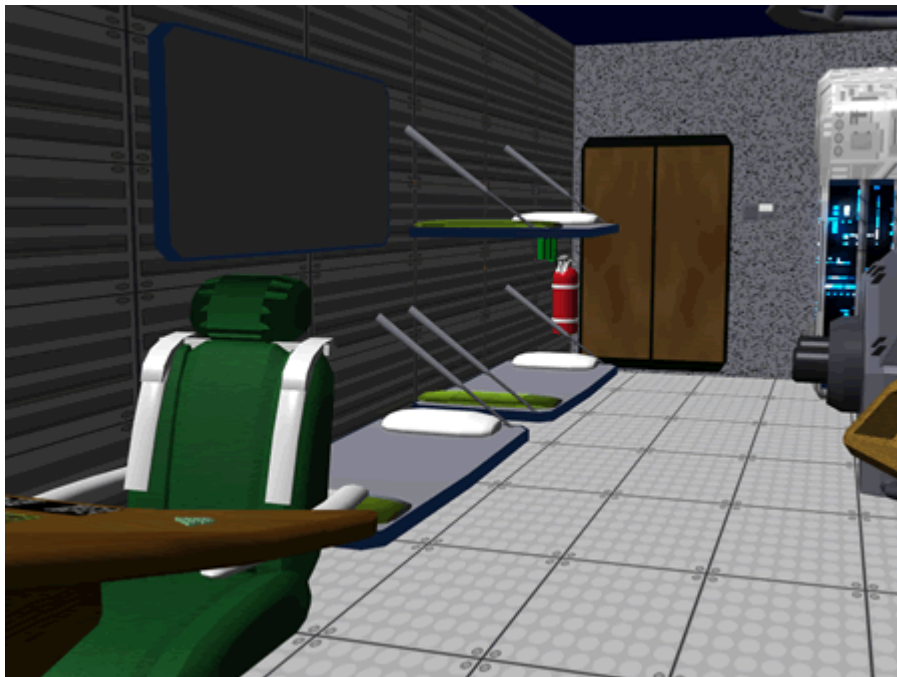
The *Tenba* has an [Geshrinari Airlock](#) with a docking feature. Inside the craft next to the airlock is storage locker with EVA gear.

## Crew Amenities

The *Tenba* is designed for long duration trips or missions, so it is equipped with a number of amenities for the crew's convenience.

### Bunks

The craft is equipped with four bunks that fold out from the starboard wall. Each comes with 1 pillow, 1 sheet and 1 blanket. They are covered with a fitted sheet covered pad of acceleration foam for comfort. They extend or retract with a touch of a button located near the head of the bunk on the exterior. A safety net can be pulled out of the wall to attach to the edge of the bunk to keep the occupant contained during unexpected movements.



### Hygiene

The *Tenba* has a one person bathroom with a sink, commode and a shower. Located aft of the airlock on the port side.

## Engineering

Against the rear wall is the heart of the *Tenba*. The unit houses the anti-matter generator and combined field system.



In front of the main unit are the two fusion generators which supply backup power.

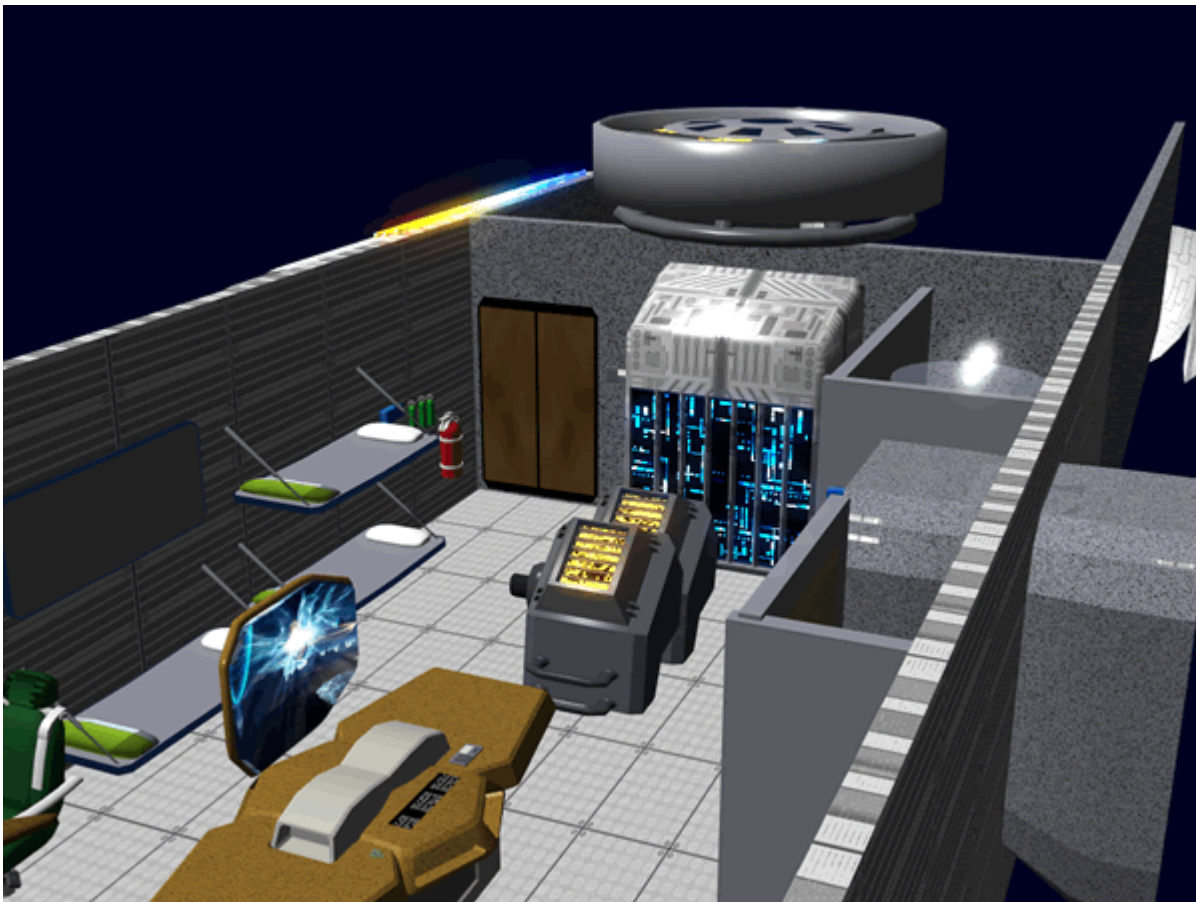
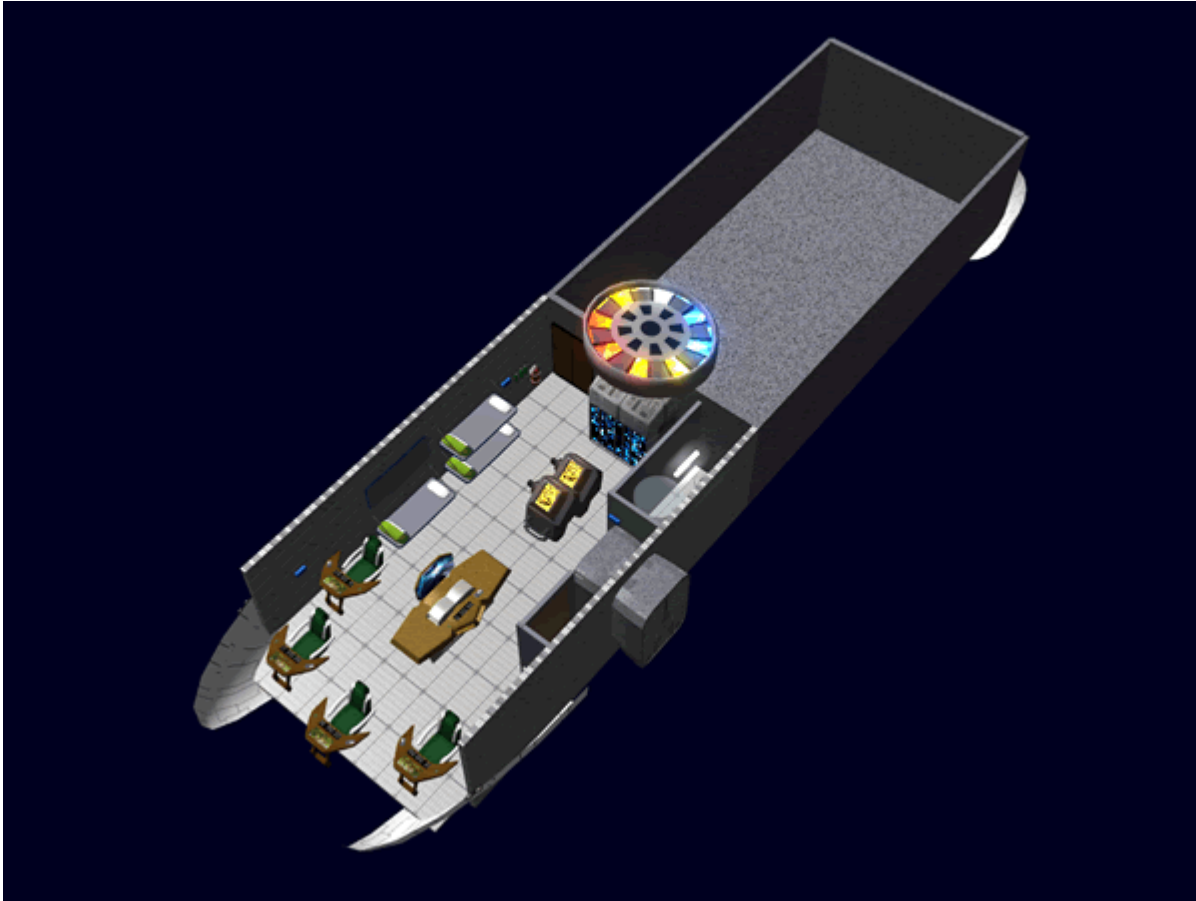
Most of the other ship systems are built into the floors and walls of the craft.

## Maintenance Conduits

The *Tenba* is too small for standard conduits. Access for repairs and maintenance to the vehicle systems is possible by removable floor panels. The panels are secured by quarter-turn fasteners that require positive sustained torque to unfasten. There are removal tools stowed in a compartment in each section of the craft.

## Center Passenger Area

The *Tenba* has all its amenities in one central location. A [Geshrinari Work Table](#) fills the center of the space. There are four padded stools that fit under the table and secure with latch hook panels.



## Emergency Supplies

The *Tenba* has two open [Emergency Supply Stations](#). One is located on the starboard side by the door to the rear section. The other station is located on the port side, just forward of the EVA locker. Each ESS has the following:

- 2 [EM-G9-1A Basic Flashlight](#)
- 1 [Fire Extinguisher](#) □s
- 3 O2 Walkabout bottles
- 2 [EM-G4-1 Filter Mask \(Basic\)](#)



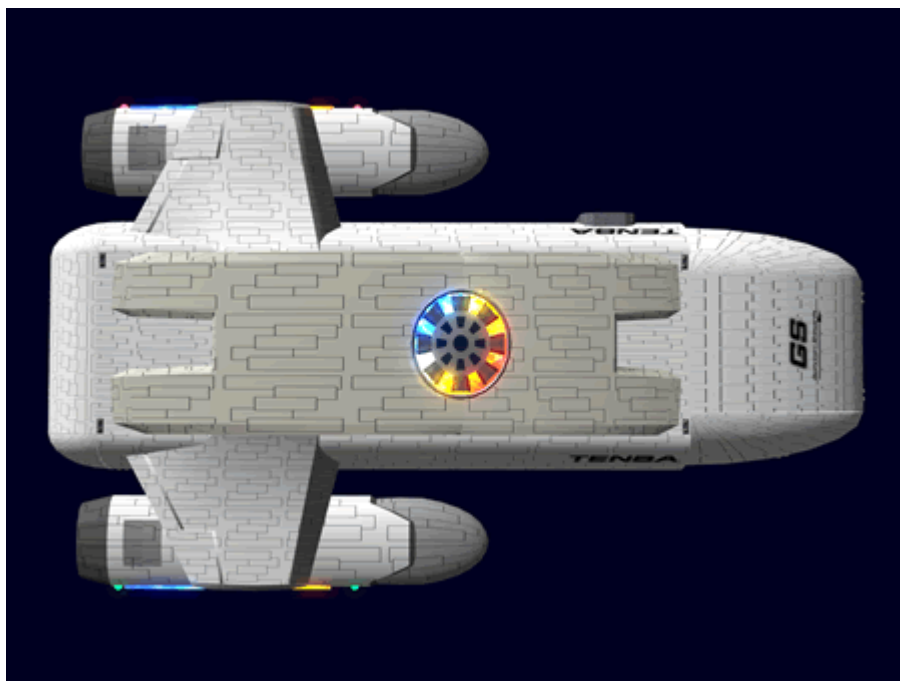
There are also four [EM-G16-2a First Aid Kit](#) located in each of the four quadrants of the interior.

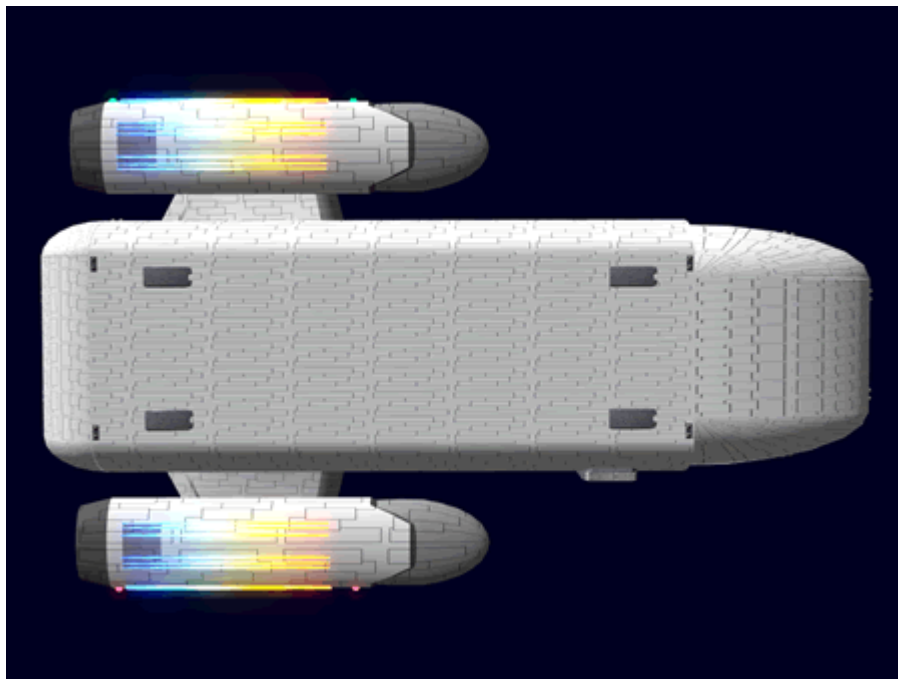
## Weapon placements

The *Tenba* is equipped with defensive weapons. They are retractable and mounted in the over carriage.



## Ship Systems





## Armored Hull

The Tenba is equipped with a [GE-T1-H3300 - Spacecraft \(DO\) Hull Construction](#) monocoque hull. The wings and engine brackets are made of [GE-V1-H3302 - Spacecraft \(OO\) Hull Construction](#).

## Computer and Sensor Systems

The *Tenba* uses a network of four [Ge-T8-E3103 - Computer Arrays](#) to handle all the computing needs. The arrays are networked by fiber optic cables and are located in four different locations for redundancy. Technically the Tenba can operate with only one, but performance would be impaired.

Because it is designed for long distance travel it is equipped with the [Ge-Y2-E3301 - Standard Starship Sensors](#). The Tenba is also equipped with [Ge-Y2-E3305 - Life Science Sensor Package](#)

## Emergency Systems

The *Tenba* is equipped with the [Ge-Y1-E3104 - Automatic Fire Suppression System](#) system and also has handheld extinguishers stored at key locations.

## Life Support System

The *Tenba* is equipped with a pair of [Ge-T8-V3100 - Environmental Systems](#) to provide all life support requirements.

## Power Systems

The *Tenba* is equipped with a dual power system.

### Primary Power

The craft uses a [Geshrinari Anti-Matter Generator](#) as its primary power system. It is capable of powering all primary system. It carries enough fuel for the ship to run normally for thirty days without collecting more.

### Secondary Power

The craft uses a pair of [Geshrinari Fusion Generator](#) for backup power. The generators can provide power ten days without collecting more.

### Fuel System

The craft can refuel both types of fuel at a space port or it can use its integrated [Geshrinari Matter Collection System](#).

## Propulsion

### FTL

The *Tenba* is equipped with [Geshrinari Continuum Distortion Drive](#) mounted into the nacelles for FTL travel.

### STL

The *Tenba* is equipped with four [Geshrinari Turbo Plasma Drive](#) installed in the nacelles for STL travel.

### Atmospheric

For added safety the *Tenba* has a [Geshrinari Graviton Engine](#) for launching and landing and low level atmospheric propulsion.

## Thrusters

The *Tenba* has twenty [Geshrinari Maneuvering Thrusters](#) for attitude and maneuvering control.

## Shields

The *Tenba* is equipped with a [Geshrinari Combined Field System](#), the primary emitter is located on the top of the over carriage.

## Weapons Systems

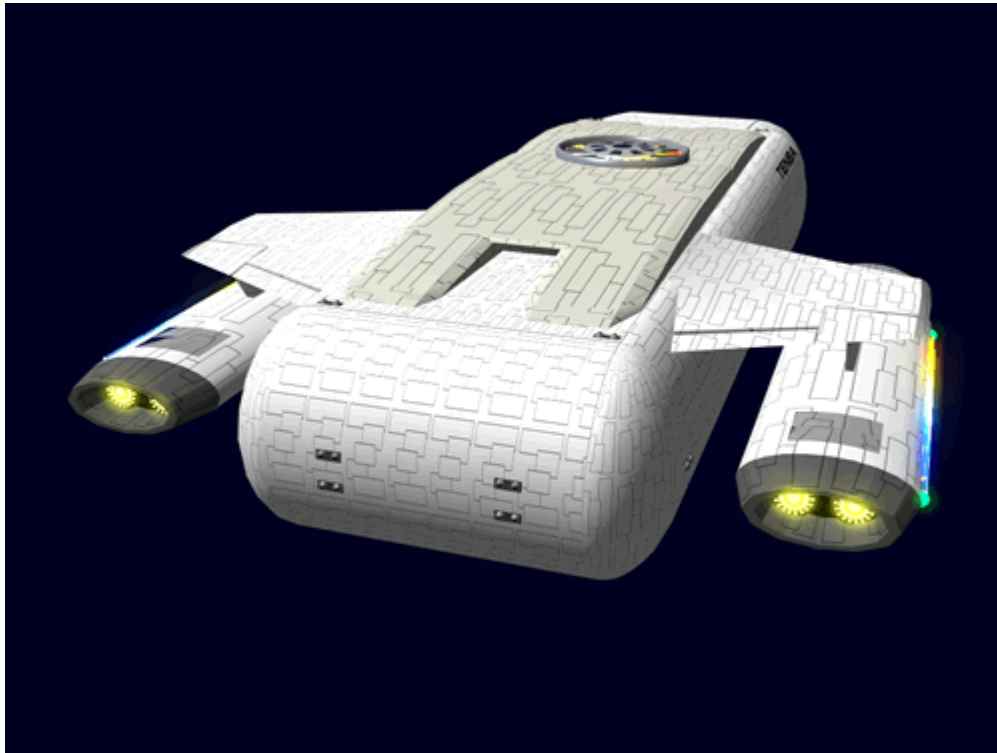
The *Tenba* is equipped with four retracting [Ge-E1-W3400 - Dual Plasma Arrays](#).

## Tether

The *Tenba* is equipped with a dorsally mounted [Geshrinari Graviton Beam Projector](#). It was added so that the craft could airlift objects too large to fit within.

## Landing Skids

The *Tenba* is fitted with four landing skids. The skids extend twelve inches prior to touching down automatically. They retract when taking off as well. A laser range finder controls the skids; passing thirty feet either extends them or retracts them. There is a manual override control as well.



## Mission Configurable Section

These are the standard Mission Configurable Sections currently available for the *Tenba*. There is a two step drop into the MCS. They have standard atmosphere and environmental conditions. Additional standard modules may be developed and custom ones available on request.

To switch modules, the back end of the Tenba swings up and the module is rolled in or out. Once in the module as it settles connects to the infrastructure of the Tenba.

- [GS-E1-M3402 Cargo \(MCS\)](#)
- [GS-E1-M3403 Troop Transport \(MCS\)](#)
- [GS-E1-M3404 Emergency Medical \(MCS\)](#)
- [GS-E1-M3405 Extended Duration \(MCS\)](#)
- [GS-E1-M3406 Passenger \(MCS\)](#)
- [GE-E1-M3407 Prisoner \(MCS\)](#) - *Star Army of Yamatai* only.

## Non-technical data

### Standard Equipment

- 4 [EM-G16-2a First Aid Kit](#)
- 1 [EM-G16-1B Medical Kit](#)
- 2 [Fire Extinguisher](#) □s
- 6 O2 Walkabout bottles (30 minute supply)

- 4 [EM-G4-1 Filter Mask \(Basic\)](#)
- 4 [EM-G9-1A Basic Flashlight](#)
- 24 [Emrys Quik Paks](#) typically preselected
- 2 boxes of [Emrys Emergency Rations](#)
- 4 [EM-G19 - Survival Kit](#)

## EVA Locker

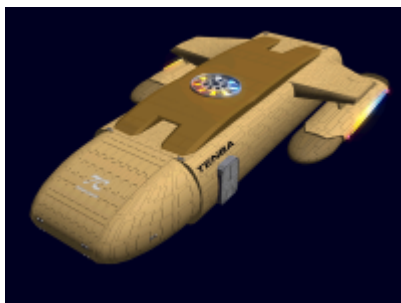
- 4 [EM-G7 Emrys Environ suit](#)
- 4 [EM-G11 "Explorer" Field Communicators](#)
- 2 [Entrenching Tool](#), folding
- 3 50 meters of high-strength cord
- [EM-G17-1a Basic Tool Kit](#)
- [EM-G17-2a Repair Kit](#)
- [EM-G18-1a Ship Hull Patch Kit](#)

## Color Schemes

- [Star Army of Yamatai](#)



- [Tamahagane Corporation](#)



- [Scientific Studies Service \(SSS\)](#)



## Disaster Recovery Version

The redesigned Disaster Recovery version of this ship is the RDRS Ge-E1-1c - Tenba Class, pictured below.



This [Rapid Disaster Response Service](#) shuttle was meant to quickly ferry small groups across space during disaster recovery operations. This shuttle might move specialized disaster recovery technicians, needed medical personnel, or leadership teams from different locations in space.

## OOC Notes

Authored and artwork by [Nashoba](#) Feb 02, 2012

Submission Approved by [Kyle](#) on Feb 06, 2012. [Forum Thread](#).

Products & Items Database	
Product Categories	small craft
Product Name	Tenba-Class Transporter
Nomenclature	Ge-E1-1A
Manufacturer	<a href="#">Geshrinari Shipyards</a>
Year Released	<a href="#">YE 34</a>

## Products & Items Database

Price (KS)	40 ,000.00 KS
------------	---------------

From:

<https://wiki.stararmy.com/> - **STAR ARMY**

Permanent link:

[https://wiki.stararmy.com/doku.php?id=corp:geshrinari\\_shipyards:tenba\\_class](https://wiki.stararmy.com/doku.php?id=corp:geshrinari_shipyards:tenba_class)

Last update: **2024/02/21 19:07**

