

Yimeya Light Mining Ship

The first ship designed and built by [Nayacesen Industrials](#), designed to serve either as a short range mining vessel or to compliment a mining fleet. It entered civilian service in [YE 33](#)

About the Yimeya

The Yimeya was built for the purpose of giving people with a low budget a chance at mining lucrative belts of asteroids. The ship has a modest cargohold and a single mining based off of, and improved upon, the Kozan. The ship features a small crew count for its size.

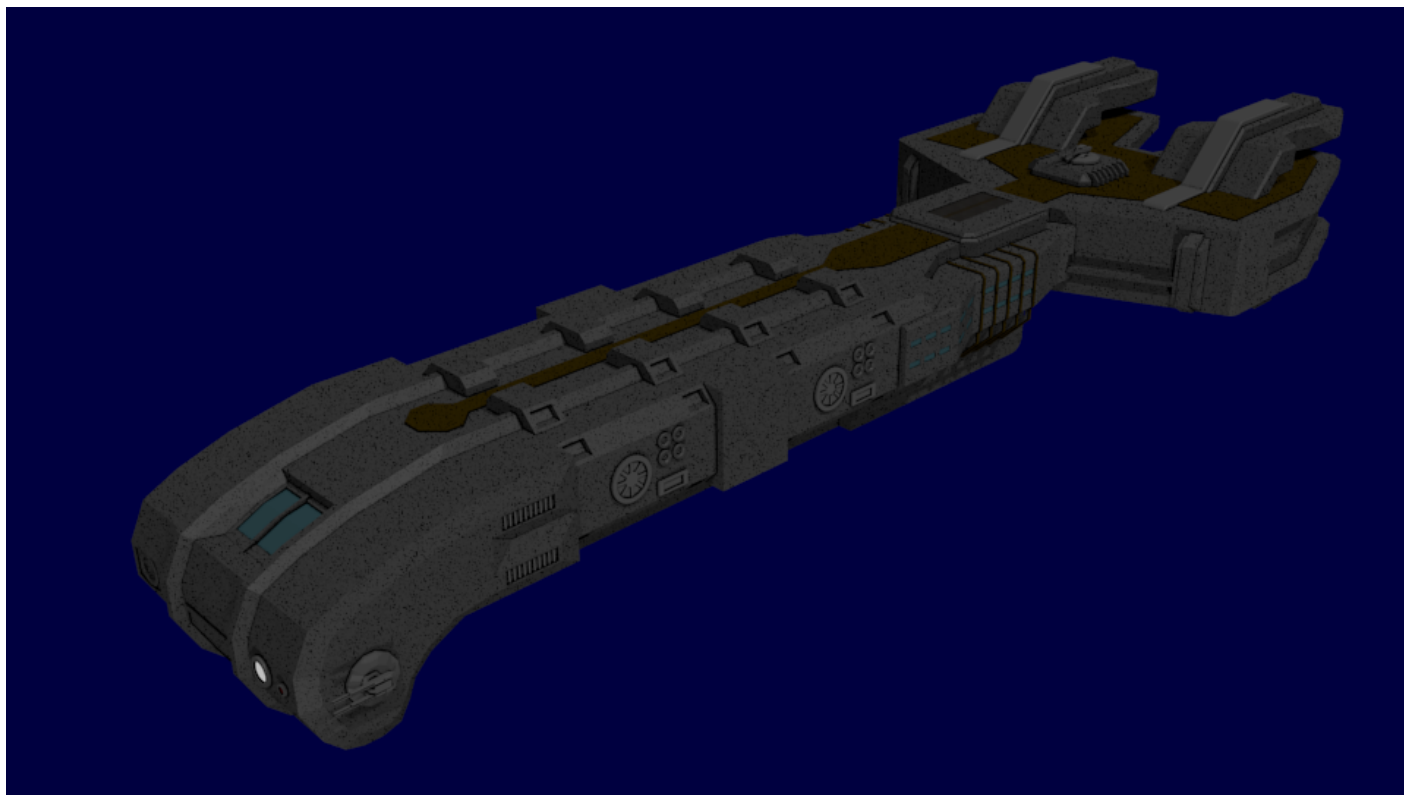
History

After Nayacesen Industrials was created, Takeyu had passed along plans for the Yimeya to his Vice-President, Mason Petryia , to study and later build. The Yimeya was floating around in Takeyu's head for years, and was a ship he had originally intended to build to help supplement his families mining. At the time, the Yimeya wasn't intended to have weapons or modest armor plating, but the designs were changed after Mason had a look at them and realized that - because of the kind of world they live in and due to the ever increasing threat of the NMX and pirates, the ship needed weapons.

Customization

Because the Yimeya was intended to be a civilian craft available to others on a budget, the ship can be ordered custom with with or without weapons but also with additions added onto the ship. It's external hull has latch points for additional cargo modules, mining modules, or even sensor packages for locating those tough to find mineral deposits or perhaps to serve as a way to detect possible hostiles. Naturally, a stripped down version of the ship is the cheapest, while a ship with all of the fittings is the most expensive.

Appearance



The Yimeya's appearance is a long ship with a large rear engine section to provide optimal thrust. It's forward section is rounded off houses the ships many electronics, including its single mining beam. It also has four protruding engines.

Statistical Data

General

Class: *Yimeya*-class Nomenclature: Ni-Y1-1A Type: Mining Vessel Designers: [Nayacesen Industrials](#)
Manufacturer: [Geshrinari Shipyards](#) **Price:** 23,000 *KS* (Without customizations)

Crew and Accommodations

Crew: 4-10 (Can be operated by two people) **Passengers:** 14-19 Maximum Capacity: 30 **Emergency Capacity:** In the event of an emergency, the ship can hold 129 people, but it would be extremely cramped. This number is incremented by thirty depending on additional cargo modules.

Dimensions

Length: 145 meters Width: 50 meters Height: 40 meters Decks: 3 (4 meters each)

Speeds

When cargoholds are not full, the Yimeya is a very nimble ship due to the many small menuvering thrusters located across its hull.

- **Atmospheric:** Mach 3
- **Combined Field System/Continuum Distortion Drive:**
 - **Minimum:** Resting motionless
 - **Sublight:** .3c
 - **Maximum Speed:** 17,500c
- **Hyperspace Drive:** 394,470c

Durability and Maintenance

Service Lifespan: Estimated 30 years of constant use, with refits.

Refit Cycle: Frequent minor updates through refits once every four to five years.

Damage Capacity

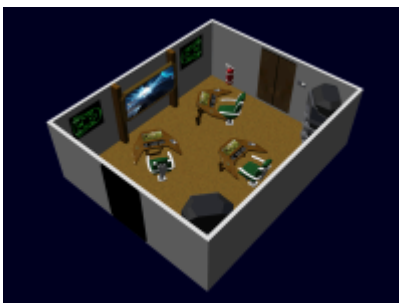
See [Damage Rating \(Version 3\)](#) for an explanation of the damage system.

- Hull: 15
- Shields: 15 (Threshold 2)

Inside Yimeya

Bridge

The *Yimeya* uses a [Geshrinari Compact Bridge](#) which is located toward the forward area of the ship

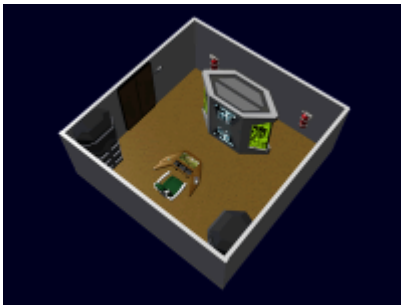


Cargo Hold

The *Yimeya* uses the [Geshrinari Cargo Bay](#) for storing onboard repair components or resources harvested from the ships mining beam.

Computer Room

The *Yimeya* has a [Geshrinari Standard Computer Room](#) located behind the bridge.



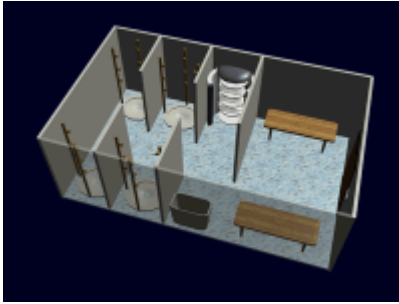
Crew Quarters

The *Yimeya* has four [Geshrinari Standard Crew Quarters](#) located toward the rear of the ship nearest the shuttle bay.



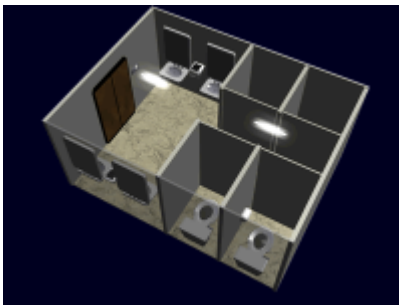
Baths

There's only one [Geshrinari Common Bath](#) and its located between the crew quarters for easy access.



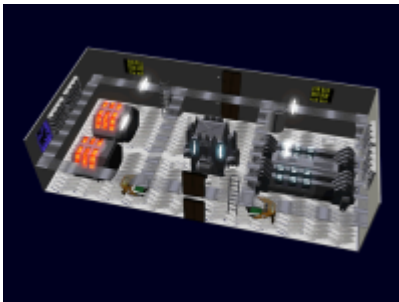
Toilets

There's two [Geshrinari Common Toilet](#)'s, one located rear of the ship and another located forward near the bridge.



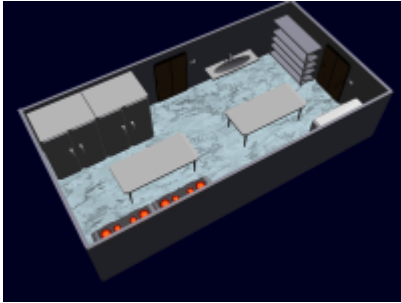
Engineering

The *Yimeya* has a [Geshrinari Standard Engineering](#) in the aft section of the ship.



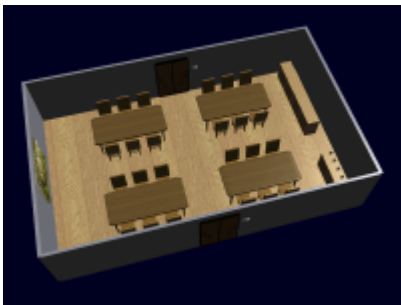
Galley

The *Yimeya*'s [Geshrinari Galley](#) is located right beside the Dining Room, on the starboard side.



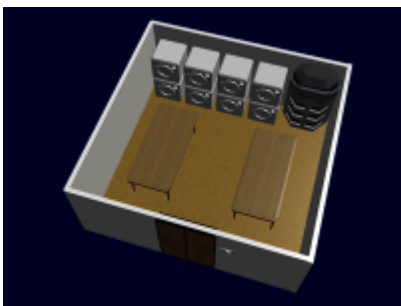
Dining Room

The *Yimeya* has a downsized version of the [Geshrinari Dining Room](#) located in the rear center of the ship just ahead of the crew quarters.



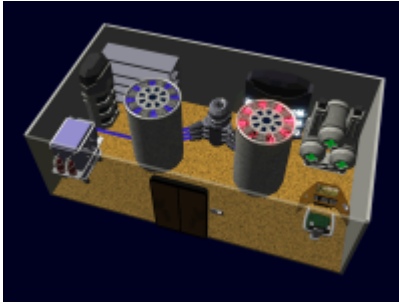
Laundry

There is a [Geshrinari Ship's Laundry](#) on right behind the crew quarters.



Life Support

The ships [Geshrinari Life Support Room](#) system is located in a secured compartment in front of the shuttle bay.



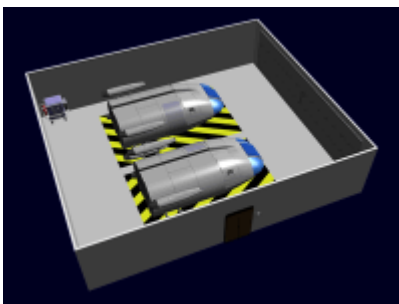
Medical Bay

The *Yimeya* is equipped with a [Geshrinari Medical Bay](#) that is located between the bridge and the ships forward cargo hold.



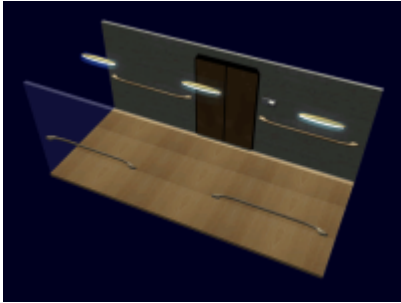
Shuttle bay

The *Yimeya* is equipped with a [Geshrinari Standard Shuttle Bay](#) located starboard of the ships main engines, it has room for only a single shuttle.

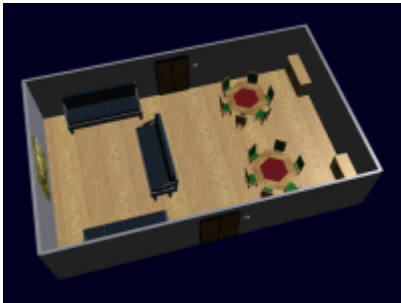


Passageways

Horizontal movement on the *Yimeya* is by [Geshrinari Corridors](#).



Lounge



Located toward the forward area of the *Yimeya* is a lounge for crewmembers to either observe the ship mining or to just enjoy the scenery, the lounge's window has a sheet of armor that slides down over it when the ship comes under attack.

[Geshrinari Lounge](#)

Ship Systems

Armored Hull

The *Yimeya* uses a [Geshrinari Shipyards](#) designed armor hull. The hull is composed .5 meters of overlapping [durandium plating](#). The frame of the ship is [Durandium Alloy](#). All windows on the *Henkei* are made of [Transparent Durandium](#).

Combined Field System

The *Yimeya* primary defense is a [Geshrinari Combined Field System](#).

Computer and Sensor Systems

For ships sold to the [Star Army of Yamatai](#) they come equipped with a [Kessaku Systems Compact Integrated Electronics System \(CIES\)](#) computer and sensors.

Computer

For ships sold to organizations outside of the [Star Army of Yamatai](#), [Geshrinari Shipyards](#) provides their own computer system.

The *Yimeya* uses the [Ge-Y2-E3300 - Hogosha Quantum Computer System](#)

Sensors

Uses the [Ge-Y2-E3301 - Standard Starship Sensors](#)

Communications

Uses the [Ge-Y2-E3302 - Communications Suite](#)

Emergency Systems

- [Geshrinari Blast Shutters](#) - which seal major sections of the ship.
- The *Yimeya* is equipped with the [Ge-Y1-E3104 - Automatic Fire Suppression System](#).
- Chemical extinguishers - These are present for manual use on electrical and metal fires.
- Ge-X3300 Escape pods - the *Yimeya* carries four [Ge-X3300 - Type 33 Escape Pod](#), two located in the forward bottom area, one located rear and another located middle bottom.

Intercom System

The *Yimeya* is equipped with a [Ge-Y1-E3103 - Intercom System](#).

Module Connection Points

The ship is equipped with four module points that serve to connect the modules to the main ship to provide power and transfer of minerals or cargo. Each module point has eight additional locking points to help keep a module locked in place.

Life Support System

The *Yimeya* has a [Ge-Y1-V3100 - Life Support System](#).

Power Systems

Aether Generator

The ship uses a [Geshrinari Aether Generator](#) as the main reactor, powering all of the ships onboard systems

Fusion Reactor

Along with the Aether is a [Geshrinari Fusion Generator](#) that is used to provide additional power to systems, but also, used to power the ships weapons, shields, and mining equipment.

Propulsion

Combined Field System

The *Yimeya* uses a [Geshrinari Combined Field System](#) for primary propulsion.

Hyperdrive

The *Yimeya* uses a [Geshrinari Hyperspace Fold Drive](#) for long distance travel.

Continuum Distortion Drive

The *Yimeya* uses two [Geshrinari Continuum Distortion Drives](#) mounted in parallel for STL and atmospheric travel.

Maneuvering Thrusters

The *Yimeya* uses [Geshrinari Maneuvering Thrusters](#) clusters for keeping steady during mining operations but also for use in docking and station keeping.

Anti-Ship Turrets

The Yimeya has three [Ni-Y1-W3300 - Anti-Ship Turrets](#) mounted one on top, two on the bottom.

[Damage Rating \(Version 3\)](#) of 2 SDR

Yimeya Modules

The Yimeya, although it comes with a modest cargohold for storing harvested minerals, has additional modules it can equip to better perform its assigned role. Each module draws power from the Yimeya, but that can be changed if the customer decides to have a power module equipped, which helps take a load off the ships main reactor and also improves on its mining yield. *Please note, there are plans in place to develop other modules for the Yimeya, but the following are the most basic*

All Modules can be jettisoned in the event of an emergency.

Modules

These modules are designed to take up a single space on the ship, allowing for up to four modules to be accomodated. A customer can request that two modules be designed together so as to take up 'two' spots, but this currently limited to the cargohold and cargo/mining modules. At current, the ship can only support 'two' mining modules due the mining beams being located on the forward sections. The power module is also one of those modules with a limited amount of slots, currently only one can be added to the ship, this is because it can output a large amount of power and thus only one is needed.

Nayacesen Industrials has placed a restriction on the Defense Modules, allowing only 'two' to be placed on ships sold to other parties. This exception is lifted toward the Star Army of Yamatai.

Module	Cost	Number to Fit
Refining	5000 Ks	4
Mining	4000 Ks	2
Cargo	3000 Ks	4
Power	9000 Ks	1
Defense	10000 Ks	2

Refining Module

A module dedicated to the refining of mined ore, see [module page for details](#)

Mining Module

The Yimeya mining module adds an additional mining laser on the Yimeya along with some additional cargo-space, the module is equipped with a single mining laser. It draws power from the ships main reactor. It has a miniature refinery onboard.

For more details, [see the module page](#).

Cargo Module

A cargo module that increases the amount of storage space of the ship, see [the module page for more information](#).

Power Module

A module that increases the power of the ship, can be used in conjunction with other modules. See [module page for more information](#).

Defense Module

Dedicated to defense, the module provided an additioanl three turrets along with a graviton beam. See [module page for more information](#).

From:
<https://wiki.stararmy.com/> - **STAR ARMY**

Permanent link:
https://wiki.stararmy.com/doku.php?id=corp:nayacesen_industrials:yimeya_light_mining

Last update: **2023/12/21 00:57**

