

# Jinkan 2A Escort

The Jinkan 2A Escort is a small craft made by [Origin Industries](#) starting in [YE 45](#). The Jinkan 2A is a major redesign of the earlier [Jinkan-class Escort](#) from [YE 31](#)



## About the Ship

The Jinkan 2A is [Origin Industries'](#) update to their popular and common Jinkan-class escort, which takes the features and capabilities of the ship and modernizes them, bringing greater power generation, more reliable weapons, and expanded capacities, as well as modernizing the look of the ship. Meant to be a jack of all trades, it does not focus on any one area of expertise, rather attempting to be useful in every situation.

## Key Features

The Jinkan 2A is a well-rounded escort.

- Multi-role Gauss cannon
- Mobile turret system
- Expanded hangar over previous generations

## Mission Specialization

The Jinkan 2A is a multi-purpose ship, primarily designed for escort duties. Due to the compact nature and low crew requirements for these ships, they also make excellent scout craft.

## Appearance

The Jinkan 2A is a rounded ovoid shape, with a large, boxy yet bulbous hangar planted at the top rear quarter. around midships on the hull are two armored doors that allow for the deployment of mobile turrets. On the sides, near the rear, is a pair of stubby wings that hold the shield generators and maneuvering thrusters at their tips. Buried in the front of the wing roots, and protruding quite a bit, are a pair of Gauss cannon, with the large heavy fusion thrusters growing out of the rear of the wing roots. Below, the shape is similar to the top, with a more bulbous rear section of the belly and a heavy-duty airlock at the center.





## History and Background

The Original design of the Jinkan class was dreamt up by [Aerin Tatst's](#) late father and left unfinished when the man passed. After [Origin Industries](#) had become successful, the CEO and head designer of Origin Fleet Yards built the ship and named it in honor of the father. Now, more than a decade after that craft first entered service, Aerin has taken it back to the drawing board, re-designing it and modernizing it while retaining many of the features that made it a popular ship.

## Statistics and Performance

The below sections contain detailed information about the ship's statistics.

### General

General nomenclature and statistical information.

- Class:OI-D1-2A
- Type: Light Escort
- Designers: Jinkan Tatst, [Aerin Tatst](#)
- Manufacturer: [Origin Industries](#), Tami
- Production: 200 annually
- Fielded by: [Origin Industries](#), Independent
- Price: 185,000 KS (2A Model)

## Passengers

Information on the crew and passenger capacity.

- Crew: 2 operators are recommended, but only one is required.
- Maximum Capacity: There are accommodations for 10 people. About 50 people can fit aboard in an emergency, but the ship would be extremely cramped.

## Dimensions

Information on the size of the ship.

- Length: 107 meters (351 feet)
- Width: 76 meters (249 feet)
- Height: 25 meters (82 feet)
- Decks: 3 (6 meters each)

## Propulsion and Range

Information on the ship's speed and range.

- Continuum Distortion Drive: 15,500c
- Hyperspace Fold Drive: .4ly/m
- Sublight Engines: .30c
- Range: Limited to 12 months with a full crew of 10
- Lifespan: estimated at 60+ years
- Refit Cycle: As needed.

## Damage Capacity

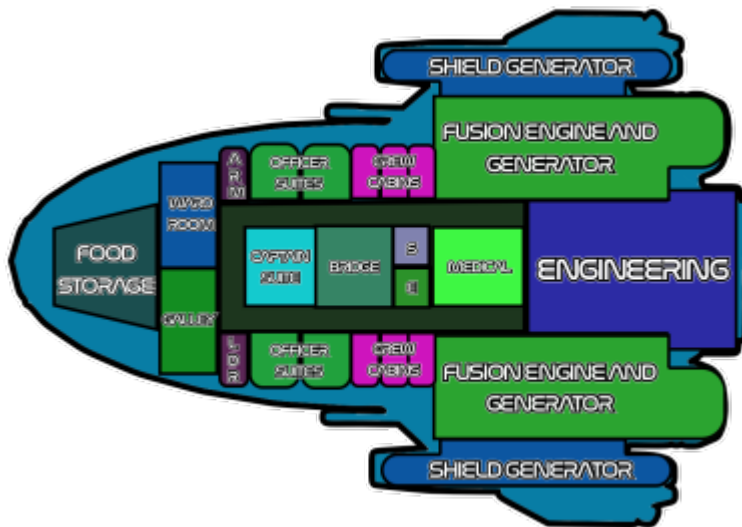
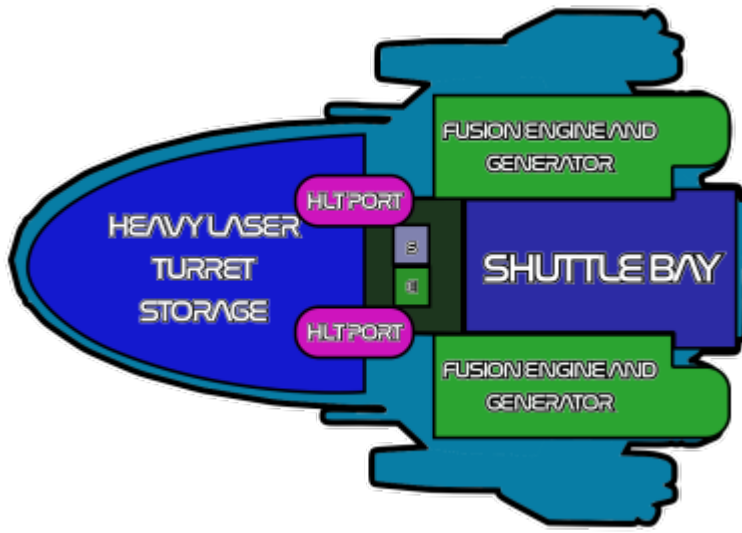
See [Damage Rating \(Version 3\)](#) for an explanation of the damage system.

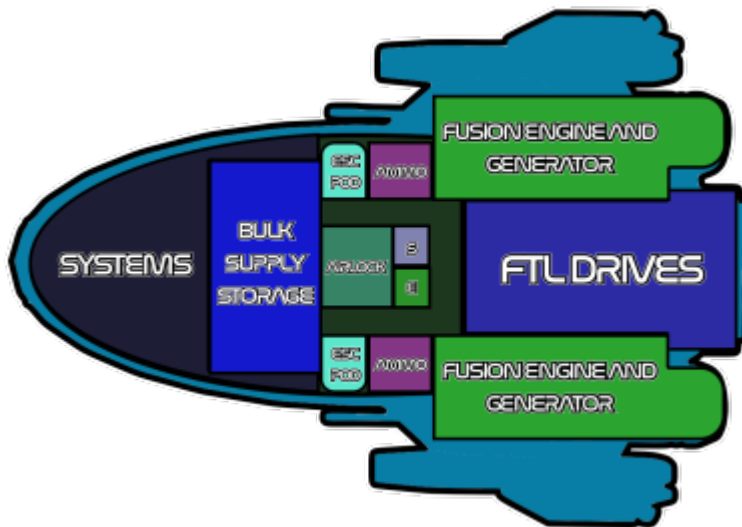
- Hull: Tier 10
- Shields: Tier 10

## Inside the Ship

The Jinkan 2A is similar to its predecessor, but is slightly more spacious, and has more privacy for the crew, opting for cabins instead of Barracks. the engineering section and wardroom have been swapped from the older model, and the engineering section has been enlarged, as have the shuttle bay and storage. Generally, the 2A has better utilization of space as well as greater interior volume.

## Deck Layout





## Compartment Layouts

The Jinkan 2A has a number of different compartments, each serving a different purpose in keeping the crew happy, healthy, and busy.

### Armory

The Jinkan 2A has a small armory located near the wardroom on the middle deck.

- [Origin-type Armory](#)

### Bridge

Placed deep inside the structure, the small bridge is very protected against most kinds of attacks, as long as they don't breach the armor.

- [Compact Bridge](#)

### Captain's Suite

Situated next to the bridge for quick access, the Captain's suite is a large, luxurious room.

- [Captain's Suite](#)

## Cargo Storage Areas

The Front end of the middle deck is a food supply storage area, which carries enough supplies for a 10-person crew to survive on for 8 months. the forward section of the lowest deck is a bulk cargo storage area, which can store extra shelf-stable food supplies, as well as munitions, spare parts, and raw materials for the engineering section.

## Crew Quarters

The Crew Quarters in the Jinkan 2A are quite large and luxurious for a ship of this size.

- 4x [Deluxe Suite](#)
- 6x [Deluxe Cabin](#)

## Crew Recreation

The Jinkan 2A features a Wardroom, which is a combination lounge/ cafeteria, and the main meeting center on the ship.

- [Wardroom](#)

## Engineering

Unlike the 1A/B models, the Jinkan 2A's engineering section is consolidated on the middle deck, allowing a larger space for working, as well as providing quick access to the fusion engine/generators, and access to the top of the FTL drives. The Engineering section contains all the tooling and machinery necessary to effectively maintain and repair the ship without the need of a drydock.

## Maintenance Conduits

- [Standard Access Tunnel](#): these are the primary means of travel in the Bottom and top decks, allowing access from the middle engineering section to the weapons and generators.

## Medical Center and Laboratory

The Med bay, located between the engineering section and the bridge, provides health and medical care to the entire crew.

- [Standard Medical Bay](#)

## Passageways

The Jinkan 2A has hallways on all three decks, with the largest being a u-shaped hallway on the middle deck, giving the crew access to all the main areas of the ship. the uppermost deck has a hallway that leads from the elevators and stairs to the HLT bay, while the lowermost deck has hallways leading from the elevator and stairs to the airlock and storage areas, as well as access to the ammunition storage and FTL systems.

- [Standard Hallway](#)
- [Standard Elevator](#): There is a single elevator in the middle of the ship, slightly towards the rear, which provides access to all three decks of the ship.

## Shuttle Bays

The Jinkan 2A's Shuttle bay has been expanded over previous models, now measuring 20m wide by 25m deep and roughly 8m tall, allowing up to four [Starbryte shuttles](#) to be docked inside, if a bit snugly. The ship, however, only comes stocked with one Starbryte.

## Kitchen

the kitchen is located on the forward part of the middle deck and has direct access to both the wardroom and the food storage area.

- [Origin Industries Standard Kitchen](#)

## Hygiene facilities

As the Jinkan 2A is meant to be self-sufficient, it has a facility for doing laundry.

- The [Laundry](#) is located on the middle deck near the kitchen. It contains three machines.

## Ship Systems

### Armored Hull and Hull Integrated Systems

The ship's frame is made from reinforced [Durandium Alloy](#), to try and help save on weight. The inner layer of the hull is also made from [Durandium Alloy](#). The hull has an armor plating of three layers of [Endurium](#), which is considerably lighter than the [Nerimium](#) plating of the previous model without sacrificing damage resistance.

Integrated into the hull are conductive grids mounted between the tiles of the outermost layer of



Endurium, which allow the [HLT](#) system to function properly. If the armor is damaged, the Hlt's must maneuver around the damaged areas or risk detaching from the hull.

## Landing Systems

The Jinkan 2A includes a set of skid-type landing gear, which are attached to folding struts to allow stowage and to cushion the impact of landing. The main portion of the landing gear consists of two large skid/struts located just aft of the center of mass, just inboard of the engines. To support the nose, a third, slightly smaller skid/strut is located about 15 meters back from the tip of the bow. All three landing gear are typically hidden under hull plates, which move out of the way for deployment.

## Airlock

On the underside of the ship is an airlock/docking ring, which allows people and supplies to enter and be loaded onto the ship, as well as allowing the ship to dock with other ships. The Docking Ring is also capable of carrying one medium [SSCC](#).

## Power Supply

The Jinkan 2A has a redundant power system that doubles as the main STL propulsion. The Jinkan 2A has two OI-VX-GP4202 [HFT SLAM](#) reactor/thrusters, located in the two main engine nacelles. Distributed throughout the ship, primarily in the stubby wings, is enough fuel to run both reactors for 12 months. Additionally, power from one generator can be re-routed to feed both thrusters in case of an emergency, or to conserve fuel, but STL speed would be reduced.

## Computers and Electronics

Computing duties on the Jinkan 2A are handled by the [Destiny AI 'Queen' suite](#).

## Emergency Systems

Aside from standard fire suppression systems, there are a few emergency systems to protect the crew if the need arises.

- 2x [OI-T3-1A Escape Shuttle](#), located on the lowest deck, these shuttles eject downward.
- Airtight bulkheads: All three decks are separated from one-another by airtight bulkheads. The Elevator is also its own self-contained section. All the rooms along the outer edge of the main deck are segregated from the hallway and bridge, to minimize danger during a hull breach.

## Life Support Systems

- **Environmental recycling system:** The ERS is just a simple yet effective filtration system, which filters water and air, purifying it so it may be reused. Filters must be replaced after 12 months of continuous operation.
- **AC system:** A simple climate control system, it allows for rooms to be kept at a specific temperature. Controls are located in each room.
- **Unidirectional Gravitational Plating:** Plating on the roof emits a pseudo-gravitational field that is attracted to the plates on the floor pushing everything on the ship 'down'. This creates the false sense of gravity that permeates the ship. This plating is permanent, and the ship will have this feeling of gravity, even without power.

## Propulsion

### STL

- 2A Model:
  - OI-VX-GP4202 [HFT SLAM](#): The Jinkan 2A model replaces the complicated Gravimetric engines and weak Ion thrusters with a pair of HONEY Fusion Thruster units. Providing just as much thrust as the gravimetric engines, at a lower cost and greater reliability, they retain the same propulsion speeds.

### FTL

- [Continuum Distortion Drive](#)
- *Hyperspace fold drive*: The Jinkan carries a compact Hyperspace fold drive, which is just powerful enough to carry the Ship itself through hyperspace.

## Shield Systems

For maximum defense, the Jinkan runs three kinds of shielding. Each shield is generated from its own pod on either side of the ship, aside from the navigational shielding, which is contained in the nose of the ship. The two shield systems in the pods work in tandem, allowing the ship to survive many types of weapons.

### Port shield generator

[Electromagnetic shields](#) Are housed in the Port shielding pod. The shield creates a bubble that encompasses the entire ship.

## Starboard shield generator

[Gravitic shielding](#) is used on the starboard side. This generator pod creates a shield bubble that encompasses the entire ship.

## Nose

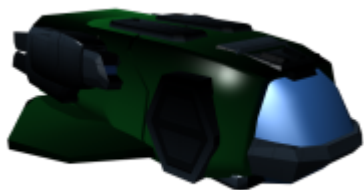
The nose of the Jinkan generates simple Navigational shielding, which allows the ship to run with a smaller sensor signature. This shielding system, however, does not help much against weapons.

## Weapons Systems

- 2A Model:
  - [Light Gauss Starship Cannon](#): 2, Tier 11
  - [Origin Heavy Laser Turret](#): 24<sup>1)</sup> Tier 9. The ship can use no more than 12 HLT's at any given time, If the safeties are overridden and the limit exceeded, the craft's power supply will begin to overheat and can potentially overload, disabling the ship.

## Vehicle Complement

### Shuttles



- One [Starbryte](#)

## OOC

This Article was created by [Kai](#) sometime in 2020. Layouts were created by [Yuuki](#)

Approved by [Andrew](#) on 2023/01/31.<sup>2)</sup>

Products & Items Database	
Product Categories	starships

Products & Items Database	
Product Name	Jinkan 2A Escort
Nomenclature	OI-D1-2A
Manufacturer	<a href="#">Origin Industries</a>
Price (KS)	185.00 KS
DR v3 max	Tier 10

1)

In Storage

2)

<https://stararmy.com/roleplay-forum/threads/jinkan-ii.70055/>

From:

<https://wiki.stararmy.com/> - **STAR ARMY**

Permanent link:

[https://wiki.stararmy.com/doku.php?id=corp:origin:jinkan\\_2a\\_escort](https://wiki.stararmy.com/doku.php?id=corp:origin:jinkan_2a_escort)Last update: **2023/12/21 00:58**