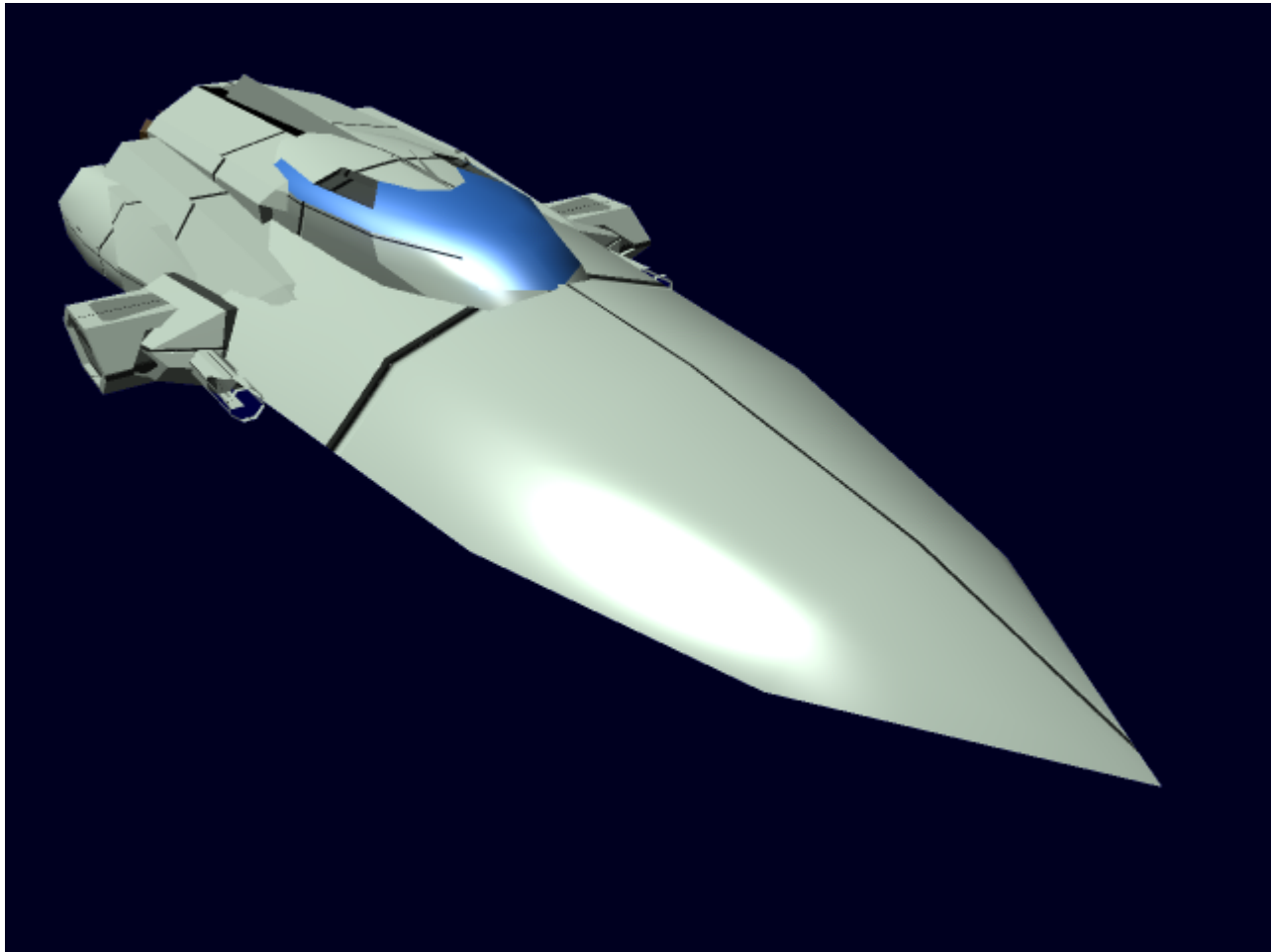


# Princess Class Yacht

The Princess Class Yacht, known as the *Hime-Class Yacht* in Yamatai, is a small, luxurious starship meant for interstellar travel. While not the fastest or the most luxurious Yacht, its relatively low price puts it in the hands of more people, making it readily accessible to even middle-class people.



## About the Ship

Tired of designing only military or paramilitary ships, [Origin Industries](#) Decided it was time to make another foray into the main civilian market, after the success of the [Courier-class](#). This time, the venture was aimed at middle to upper-class people, rather than working-class spacers, in the form of a luxury yacht. Designed with more flowing lines than many other Origin vessels, the Princess-class is an elegant addition to Origin's product line.

## History

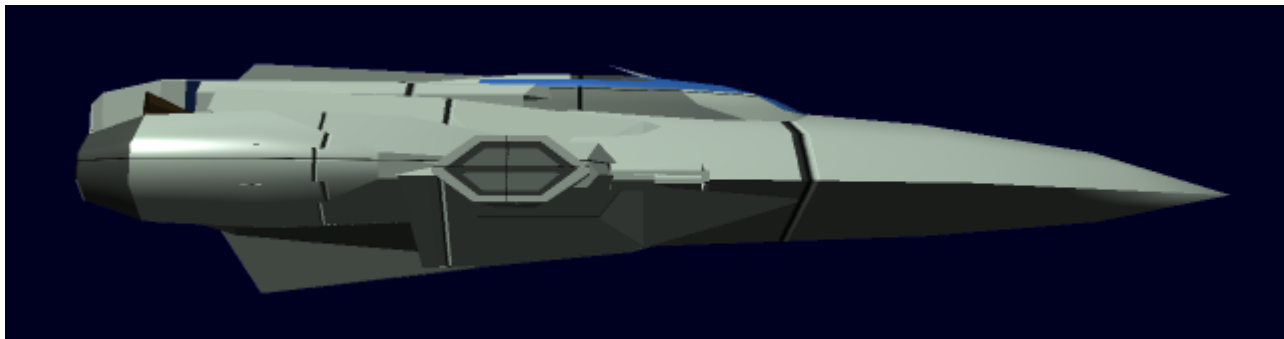
Introduced in [YE 30](#), the Princess class yacht found moderate success in the civilian market, and a few even made it into the hands of the [Star Army of Yamatai](#) where they served as VIP transports for several years before their eventual retirement. The Princess never really made a splash, or took a large chunk of the market share, but its affordability and ease of use have made it a staple regardless. While still in use, and produced for quite some time, by [YE 45](#), the design was aging and in need of update.

## Key Features

- Luxurious
- Easy to pilot
- Fast

## Appearance

The Princess is a long, narrow teardrop shape, with the outline broken up at the rear by a cluster of engines and docking booms to either side. Roughly even with the docking booms is the bridge area, which is shaped somewhat like a bubble rising out of the hull and receding into the engine nacelles. On each of the docking booms is the barrel of an Ion cannon, both of which are fixed forward.





## History and Background

[Aerin Tatst](#), tired of having to deal with the issues of getting a ship to handle the stresses of military-grade hardware and yet still remain low-cost and economically feasible, decided to design something comparatively simple, and yet at the same time elegant and luxurious. Began as a sketch on a pad of paper, the Princess-class eventually was transferred onto a computer, and from there design work took off, resulting in a Yacht which could hopefully control the market by being low-cost, easy to maintain, and in ready supply.

## Statistics and Performance

### General

- Class: OI-Y1-1A
- Type: Yacht
- Designers: [Aerin Tatst](#), [Origin Industries](#)
- Manufacturer: [Origin Industries](#)
- Production: Mass production

- Fielded by: Civilians
- **price:** 45,000 KS

## Passengers

- Crew: 3 operators are recommended, only one is required.
- Maximum Capacity: There are accommodations for 10 people. About 200 people can fit aboard in an emergency, but the ship would be extremely cramped.

## Dimensions

- Length: 100 meters
- Width: 35 meters
- Height: 20 meters
- Decks: 4

## Propulsion and Range

- **Continuum Distortion Drive:** 14,200c
- **Hyperspace Fold Drive:** .5ly/min
- **Sublight Engines:** .42c
- Range: 1 year of constant travel
- Lifespan: indefinite, with proper maintenance
- Refit Cycle: yearly

## Damage Capacity

See [Damage Rating \(Version 3\)](#) for an explanation of the damage system.

As an [unarmored](#) civilian craft, the Princess Class Yacht takes damage at one tier worse than its rating.

- Hull: Tier 10 (Light Starship)
- Shields: Tier 10 (Light Starship)

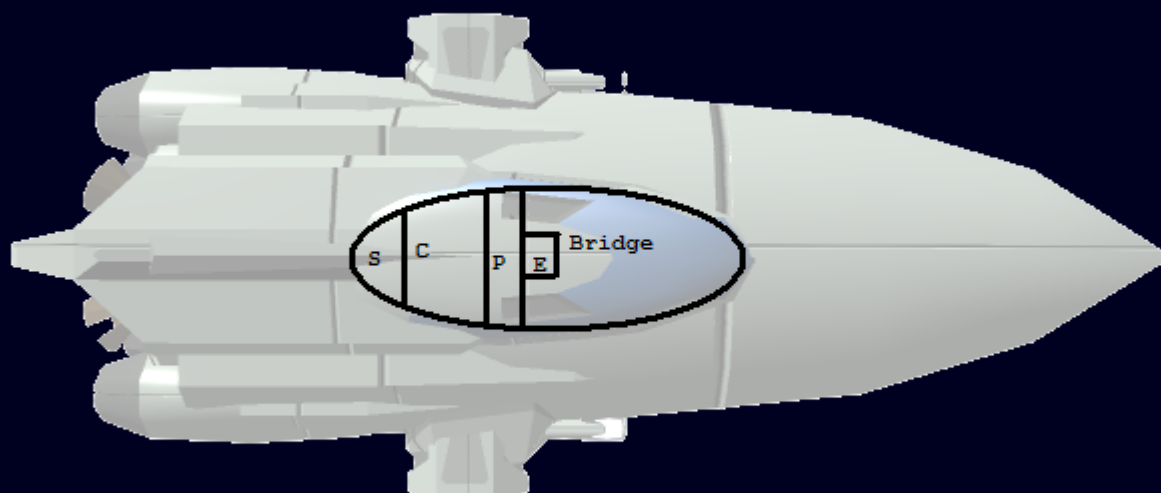
## Inside the Ship

### Deck Layout

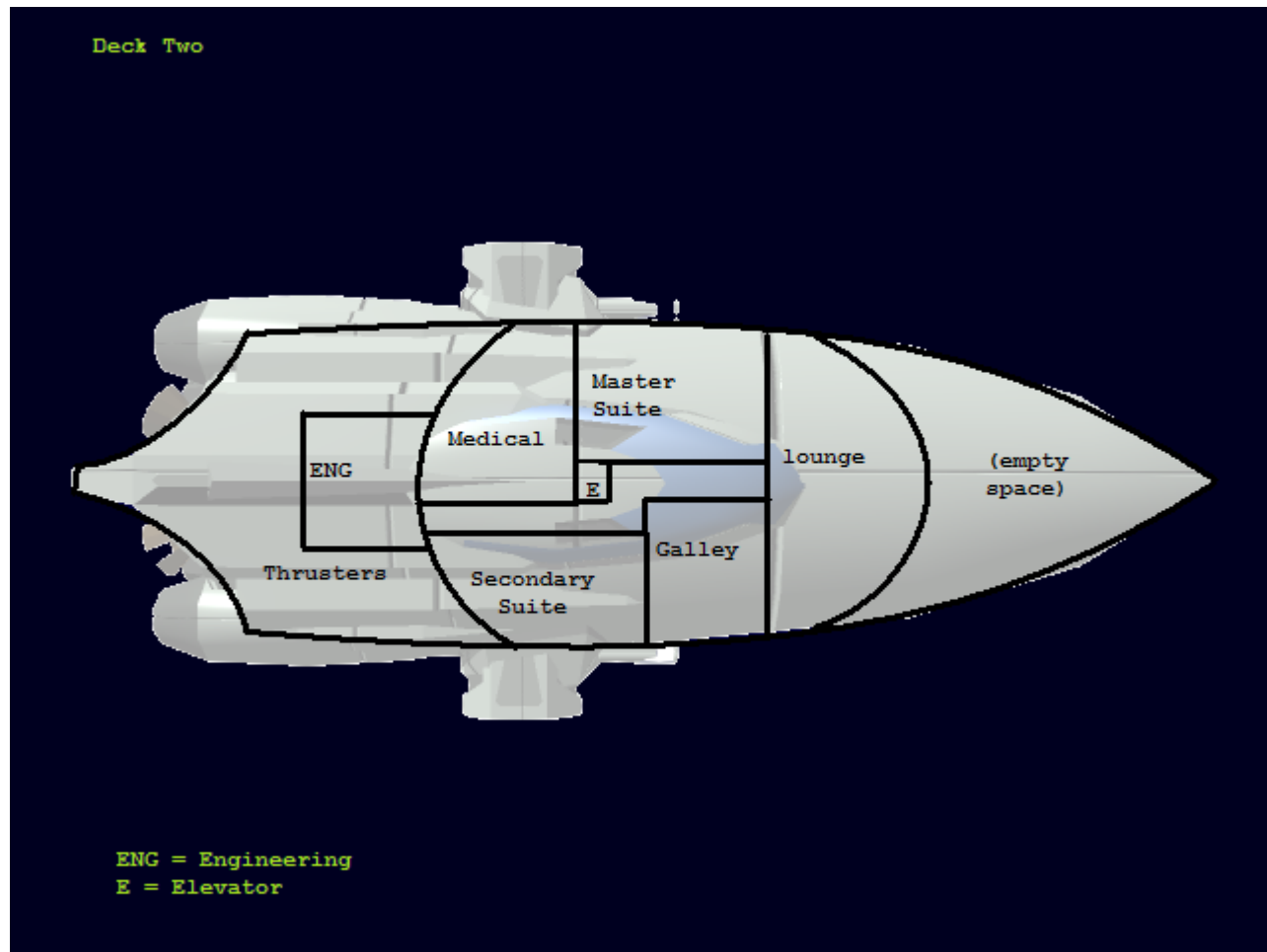
OI-Y1-1A Princess-class Yacht

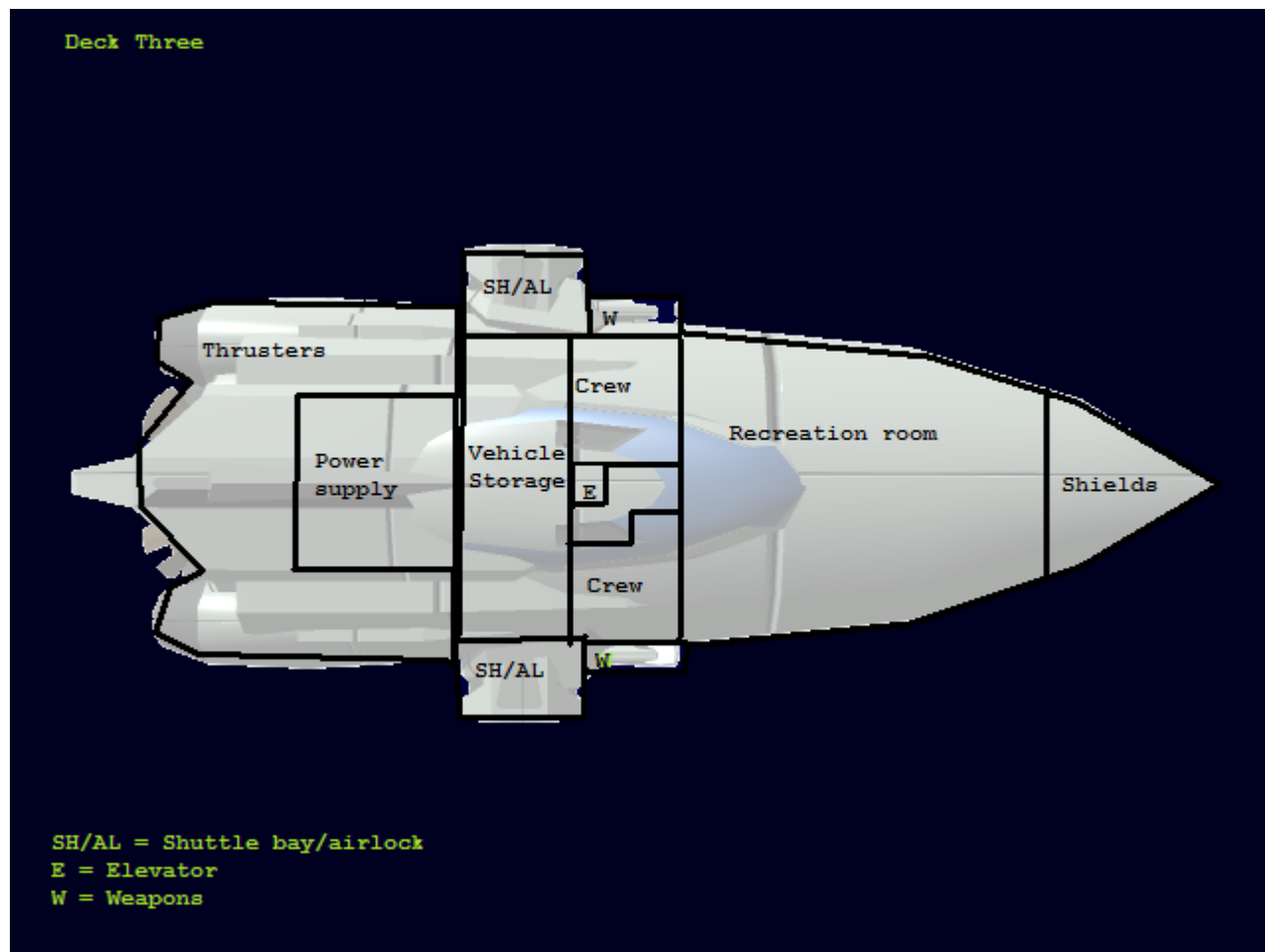
Deck plans

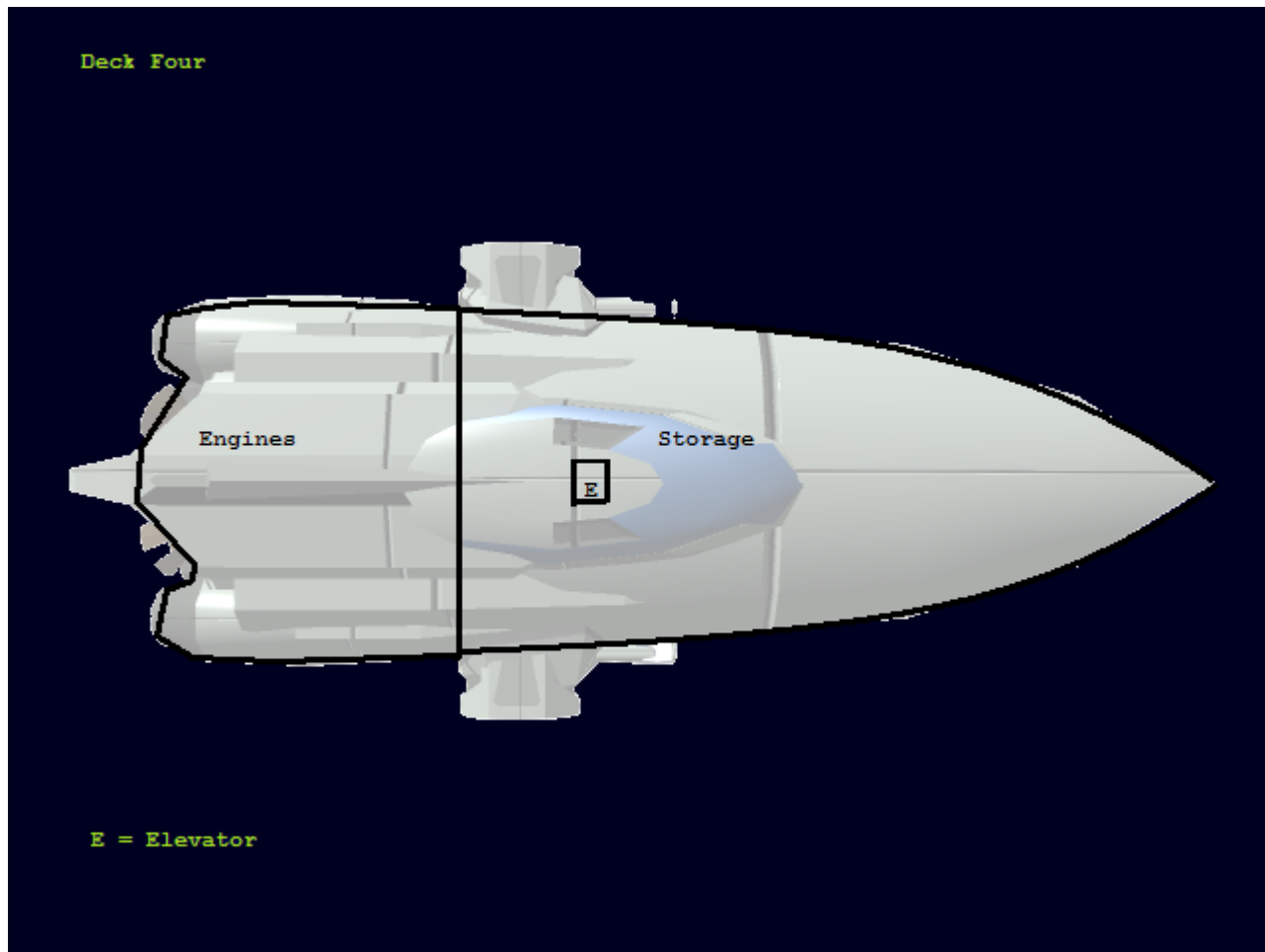
Bridge deck



S = Sensors  
C = Computers  
P = Escape pods  
E = Elevator







## Compartment Layouts

### Bridge

- [Deluxe Bridge](#)

### Master Suite

- The Master suite is a large, luxurious room with a King-sized bed, a full office including a computer, a large wardrobe, a simulated fireplace, a full bathroom with a shower and a spa tub. The room has plush carpet, a couch, a loveseat, and a large viewscreen.

### Secondary Suite

- The Secondary suite is a large, luxurious room, similar to the Master Suite, but smaller, with only a queen-sized bed and a regular bathtub. The secondary suite also lacks the simulated fireplace.



## Cargo Storage Areas

- The bottom level is a large storage area which carries all the supplies needed for a full crew for one year.

## Crew Cabins

- [Crew Barracks](#)

## Galley

- [Origin Industries Standard Kitchen](#)

## Lounge

- The lounge is a simple room, meant to have a relaxing atmosphere, a place away from all the worries of the outside world. The walls are soundproofed, to further this ambiance. The room include one couch, an armchair, and a loveseat, two viewscreens, and various media devices. It has wireless network access, and a large dining table for meals.

## Crew Recreation

- [Recreational Facilities](#)

## Vehicle Storage

- Part of the third deck is a vehicle storage area, which is 45 meters wide by ten meters long by ten meters high (it drops down, taking up part of the cargo deck's space)
- The protrusions on the sides of the Princess-class are small Airlock/shuttle bays which can each hold one [Onset Shuttle](#).

## Engineering

- The engineering section, located on the second deck, contains all the proper gear for engineering, as well as access to all of the portions of the ship's engine area.

## Maintenance Conduits

- Maintenance Conduits are only found in the rear of the ship, to access the main power generator and other systems in the engine/thruster section.

## Medical Center

- The Med bay is rather large for such a small ship, There are several stations, including an examination room, an operating room, a small sterile room for patients, even a dentist's station. Each station is stocked with the proper medicines and supplies needed for its own operation. There is also a small restroom to be used by patients and on-duty doctors.

## Passageways

- [Standard Hallway](#)
- [Standard Elevator](#)

# Ship Systems

## Armored Hull and Hull Integrated Systems

*"Armor? What Armor?" - Aerin Tatst, when asked what sort of armor defenses the Princess had*

The princess-class is constructed of a [Durandium Alloy](#) frame with a thin Durandium hull, providing practically zero protection against military weapons, but keeps the ship's mass very low.

## Airlocks

On either side of the Princess is a special Airlock/Shuttle bay/ Docking boom, which allows the ship to dock with up to two other vessels, as well as load small craft and vehicles. These booms are capable of lowering ramps to the ground when landed.

## Computers and Electronics

The Princess Class is administrated by a [Destiny AI "Knight" Suite](#), which is an advanced quantum computer and sensor system, integrated with the ships' electronics.

## Emergency Systems

- [Origin Standard Escape Pods](#) x 2
- Airtight bulkheads: All four decks are separated from one-another by airtight bulkheads. The Elevator is also its own self-contained section.

## Life Support Systems

**Environmental recycling system** The ERS is just a simple yet effective filtration system, which filters water and air, purifying it so it may be reused. Filters must be replaced after 15 months of continuous operation.

**AC system** A simple climate control system, it allows for rooms to be kept at a specific temperature. Controls are located in each room.

**Unidirectional Gravitational Plating:** Plating on the roof emits a pseudo-gravitational field that is attracted to the plates on the floor pushing everything on the ship 'down'. This creates the false sense of gravity that permeates the ship.

## Propulsion

**FTL Propulsion:**[Continuum Distortion Drive](#) *Hyperspace Fold Drive*: This ship has a basic Fold Drive, for use in Inter-stellar travel. The fold bubble is incapable of "towing" anything larger than a shuttle along with the ship. **STL Propulsion:** The Princess uses a grouping of high-performance Ion thrusters for STL propulsion. These particular thrusters have very high acceleration and top speed, but are energy hogs. Travelling at full speed for extended periods of time can deplete the ship's fuel reserves.

## Power

The Princess uses a fusion reactor, which uses heavy water (water with an extra Hydrogen atom) as its fuel. Running on normal power, the Princess carries enough fuel for one year of regular activity.

## Shield Systems

The ship uses a fairly simple shielding system to protect the ship and its inhabitants from the harsh elements of space, such as radiation and debris. This is the default shielding for the ship, and is usually turned on all the time.

## Weapons Systems

- 2 [Ionic Pulse Cannon](#) - [Damage Rating \(Version 3\)](#) Tier 10 (Light Anti-Starship)

## Vehicle Complement

### Shuttles

- [Onset Shuttle](#) X2 normally, up to 5

## OOC Notes

Updated for [Damage Rating \(Version 3\)](#) by Yuuki. [Approval Thread](#)

Products & Items Database	
Product Categories	starships
Product Name	Princess-Class Yacht
Nomenclature	OI-Y1-1A
Manufacturer	<a href="#">Origin Industries</a>
Price (KS)	45,000.00 KS
Star Army Logistics	
Supply Classification	Class A - STARSHIPS

From:

<https://wiki.stararmy.com/> - **STAR ARMY**

Permanent link:

[https://wiki.stararmy.com/doku.php?id=corp:origin:princess\\_class\\_yacht](https://wiki.stararmy.com/doku.php?id=corp:origin:princess_class_yacht)

Last update: **2023/12/21 00:58**

