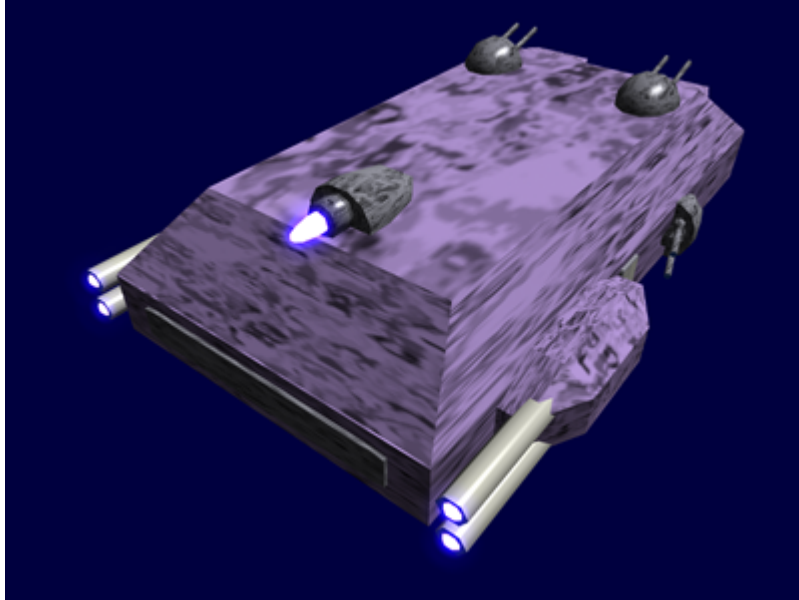


# Tantou-class Gunboat

The My-E1-1a was a gunboat design that was supposed to become available in [YE 31](#) but was never produced due to the fall of the [UOC](#).



## About the Tantou Gunboat

The *Tantou* is a small starship produced by [Motoyoshi Fleet Yards](#). It is a gunboat and it serves in small groups that coordinate their attacks. Originally intended to combat pirates, it is capable of performing as part of a system defense force. The *Tantou* can also be used in fleets to help protect larger assets from smaller craft. The Tantou Gunboat uses speed and shields versus armor. Designed with enough weapons to accord itself in battle, but is intended to work in groups of two to three Gunboats.

## Appearance

The Tantou is by design a very small, compact vessel shaped like a rectangular casket. The design is a frame with just enough ship systems to support the weaponry. It features two large turrets on the long sides and several smaller turrets. On the ship's stern there are four rectangular engines. Typically, the Tantou is painted in a light purple pattern, in accordance with UOCPF tradition.

## History

The Tantou was originally being designed for the [Star Army of Yamatai](#) during their offensive with the [Sfrarabla Mishhuvurthyar Xhrafuklurp \(SMX\)](#). But it never got off the drawing board when the hostilities ceased. Rising to the needs of the fledgling [UOC](#), [Motoyoshi Fleet Yards](#) resurrected the design and

adjusted it to make an inexpensive group of ships.

## Statistical Data

### General

**Organization Using This item:** [United Outer Colonies Peacekeeping Forces](#) Type: Fast Gunboat  
Nomenclature: My-E1-1a Designers: [Motoyoshi Fleet Yards](#) Manufacturers: [Motoyoshi Fleet Yards](#), [United Outer Colonies Peacekeeping Forces](#) **Entered service:** YE 31

### Crew and Accommodations

Crew: Three operators are recommended, but only one is required. Maximum Capacity: There are accommodations for 14. **Emergency Capacity:** About 50 people could fit aboard in an emergency, but the ship would be extremely cramped.

### Dimensions

Length: 40m ( 131.2 ft) Width: 21m ( 68.88 ft) *Hull* Width: 28m ( 91.84 ft) *Overall* Height: 12m ( 39.36 ft)  
*Hull* Height: 13.5m ( 44.28 ft) *Overall* Decks: 3 (4m each)

### Propulsion and Range

#### Speeds

The Tantou Gunboat is an agile vessel.

- **Sublight Engines:** 0.375 c
- **Combined Field System/Continuum Distortion Drive:** Nami (Wave) CDD
  - **Minimum:** Resting motionless
  - **Cruising Speed:** 16,500c
  - **Maximum Speed:** 18,000c
- **Hyperspace Drive:** 447,066c (0.85 ly/m)

### Durability and Maintenance

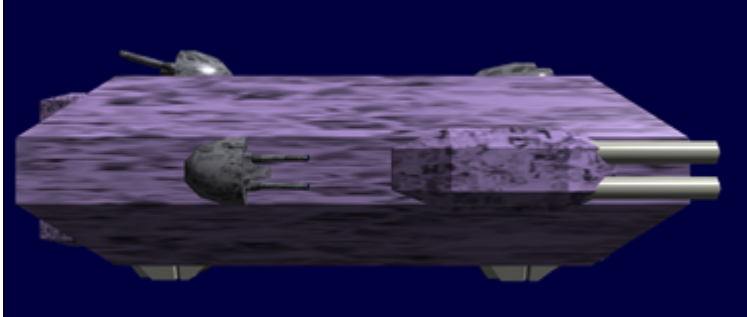
**Service Lifespan:** Estimated 20 years of constant use, although this could certainly be extended with refits.

## Damage Capacity

See [Damage Rating \(Version 3\)](#) for an explanation of the damage system.

Hull: 6 SP (Starship Scale) Shields: 10 SP (Threshold 2)

## Inside the Tantou Gunboat



## Armory

The Armory is the repository for heavier weapons than the crew's standard issue. The Armory is a [Yamataium](#) reinforced room. It is secured with an emergency blast shutter and can only be opened by the authority of the Captain, First Officer or Security chief.

## Avionics

### Dorsal, Ventral, Aft, Forward, Starboard and Port Expansion Mounts:

- [Variable Wide-band Imaging Clusters](#) (*Boosted to 3 AU*)
- [Electromagnetic and Gravimetric Sensors](#) (*Boosted Optimal Range to 3.5 LY, effectiveness drops off at 5.0 LY*)
- [Neutrino Telescope](#)
- [Infrared Spectrometer](#) (*Boosted Optimal Range to 3.0 LY, effectiveness drops off at 3.5 LY*)

### Omnidirectional Arrays:

- [Distortion/Subspace Sensors](#) (*Boosted Optimal Range to 1.5 LY, effectiveness drops off at 2.0 LY*)

## Communications

## Internal Systems:

- [Fiber Optic Network](#)
- Emergency [Sound-Powered Telephones](#).

### **Additional Systems:**

- [Laser Communications](#).
- [Hyperspace Communications](#).

### **Electronic Warfare and Disruption Systems**

- [EM-Full Spectral Pulse](#)
- [Subspace-encased Electrogravitic Pulse Projector](#)
- [Phasic Wave Emitter](#)
- [Distortion Pulse](#)

### **Other**

- [Attack Prediction Suite](#)

### **Bridge**

The bridge includes a number of stations centered around the commanding officer. Each station is dedicated to a specific aspect of the functions of both the ship's operation, and the crew's mission. Note all control stations on the Tantou are programmable digital touch screens. This helped simplify the design of the ship, as it standardized all stations. It also allows in emergency situations for any station on the ship to be used as the person requires.

Stations include:

- Helm / Navigation front left
- Weapons Systems front right
- Sensors and Operations left of command.
- Engineering (often used for damage control) right of command.
- Captain's chair/Command in the center

Each station include several programmable control panels, an intercom, and an adjustable chair with a restraint system. Chairs have acceleration foam padding and are covered with polyester. Volumetric display systems project smaller floating windows as needed.

Starship bridges are restricted areas; only authorized personnel are allowed to enter.

## Captain's Cabin

The Captain's cabin is a standard [MFY Type 30 Standard Officer's Cabin](#).

## Cargo Hold

The Tantou's cargo hold is cramped and can accommodate only 4 [Standard Starship Cargo Containers](#) of medium size. It located on deck three in the forward section.

## Computer Room

The Tantou features a [Motoyoshi Fleet Yards](#) standard computer room for a [MIKO core](#).

## Crew Cabins

### Enlisted bunkroom

There are three [MFY Type 30 Standard Enlisted Bunkroom](#) to provide accomondations for twelve crew members.

### Bath House

Next to the bunkrooms is a [MFY Type 30 Standard Enlisted Bath House](#).

## Engineering

The Engineering section of the Tantou is located in the aft and is on all three decks. The main portions are on decks one and three, with catwalks and gangways and other equipment on deck two. It is the heart of the ship containing the generators, and propulsion systems. There are ladders and catwalks to allow access to equipment mounted higher up. Engineering is entered via deck one.

## First Officer's Cabin

The First Officer's cabin is a standard [MFY Type 30 Standard Officer's Cabin](#).

## Laundry Room

The Tantou Gunboat features a half size [MFY Type 30 Standard Laundry Facility](#).

### Laundry Facilities include:

- 2 - Heavy Duty Quad-Cycle Washers (Wash, Rise, Spin, Ultraviolet Sanitizing)
- 2 - Heavy Duty Dryers
- 2 - Automated Folding tables
- 1 - Vending machine
- AI controlled Laundry carts with gravity manipulator loading devices.

## Maintenance Conduits

Various small tunnels run throughout the ship, ribbed with support framing and lined with pipes and wiring. These allow access to some of the ship's more remote areas.

## Medical Center

The Tantou Medical center is compact and designed to provide basic emergency medical care for its crew.

## Mess and Galley

The Tantou mess contains two large tables that seat eight comfortably.

### Galley

The Tantou galley contains two ovens, two microwave ovens, a rapid-warming electronic stove, a walk-in refrigerator, walk-in freezer, assorted appliances. All surfaces are stainless steel. A large sink and a heavy duty dishwasher is also present for cleaning pots and pans.

### Scullery

The scullery contains There is a small room between the kitchen and the dining area area where silverware and china are stored. There is also a dishwasher for cleaning the silverware and china.

## Passageways

The Tantou class uses corridors similar to [Standard Passageways](#)

## Shuttle Bay

The Tantou has a compact shuttle bay, it is for maintaining and servicing the small craft that are assigned to the Tantou. It is three meters high located aft on deck two.

## Wardroom

The Tantou gunboat features a small [MFY Type 30 Standard Wardroom](#). It is utilitarian decorated with a large table surrounded with padded chairs. Decor is up to the commander of the vessel.

## Ship systems

### Armored Hull

The Tantou's armored hull is a [Shouri ES Armor Series Type 3A Construct](#)

### Computer and Sensor Systems

The Tantou uses a standard [MIKO Electronics Suite](#)

It features the [\[CORE\]:The MIKO Core](#) and contains one module to help the ship perform its duties.

#### Module:

- [Scout](#)

### Emergency Systems

The Tantou contains all [Standard Starship Emergency Systems](#).

### Isolation Doors

[Forcefield-Nested Isolation Doors](#) are located:

- at the entrances to the armory (always locked and closed)
- at the entrance to the bridge
- at the entrance to the computer (always locked and closed)
- at the entrance to engineering
- at the entrances to the wardroom/galley area
- between the shuttle bay
- on every deck level in the main passageway and cargo lift shaft (between two and three, etc.)

## Damage Control Stations

Damage control stations are located:

- in Engineering
- Starboard of the bridge on deck 1
- in the Cargo Bay (one front, one rear)
- Shuttle bay

## Environmental systems

The Tantou features standard [Motoyoshi Fleet Yards Motoyoshi Fleet Yards Life Support Systems](#).

## Escape Pods (3)

The Tantou carries three [Motoyoshi Fleet Yards Type 30 Escape pods](#).

## Soul Savior Pod

See: [Soul Savior Pod](#)

## Life Support System

The Tantou uses [Motoyoshi Fleet Yards Life Support Systems](#).

## Power Systems

The primary power generator is [Kaminari Quantum Foam Generators](#). Secondary power is generated by [Tsuyosa Series Matter-Antimatter Reactor](#)



## Propulsion

### Auxiliary Engines

4 - [Hoshi Series Gravimetric Sublight Drives \(Discontinued\)](#) Ginga 'Galaxy' Gravimetric Drive

### Continuum Distortion Drives

Primary propulsion system [Mizu Series Continuum Distortion Drives](#)

[Nami \(Wave\) CDD](#)

### Hyperspace Fold

[Yumeoibito Hyperspace Fold Drive](#) The Yumeoibito design is built on redundancy; with built in capacitor systems that keep the dual fold drives are charged during normal operation, when one drive is utilized the second drive remains charged to allow the ship to fold a second time immediately after the first if required.

## Shields

The Tantou features [Regenerative Shield System](#) -

## Weapons Systems

### Primary Weapon

The primary weapons for the Tantou are [NovaCorp Type 1 Photon Lances](#). The Tantou has four of them but can only fire a volley from two at a time. Due to the power constraints of the Tantou, one set of cannons is fired while the other pair are charging.

- 4 Laterally mounted [Type 1 Photon Lance](#) **Damage:** 3 SDR

Rate of Fire: One volley every three seconds

### Secondary

This weapon gives the Tantou an extra punch.

- 1 Dorsally mounted [Medium Positron Array](#) **Damage:** 4 Tier 12, Heavy Anti-Starship

Rate of Fire: Once every five minutes

## Defensive

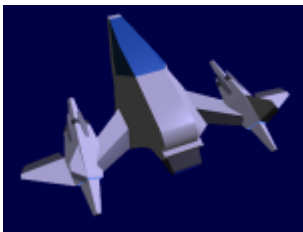
The Tantou has additional protection by the installation of two turrets to provide point defense.

- 4 Turret mounted [Origin Point Defense Weapons](#) **Damage:** 1 SDR

Rate of Fire: Three pulses per second

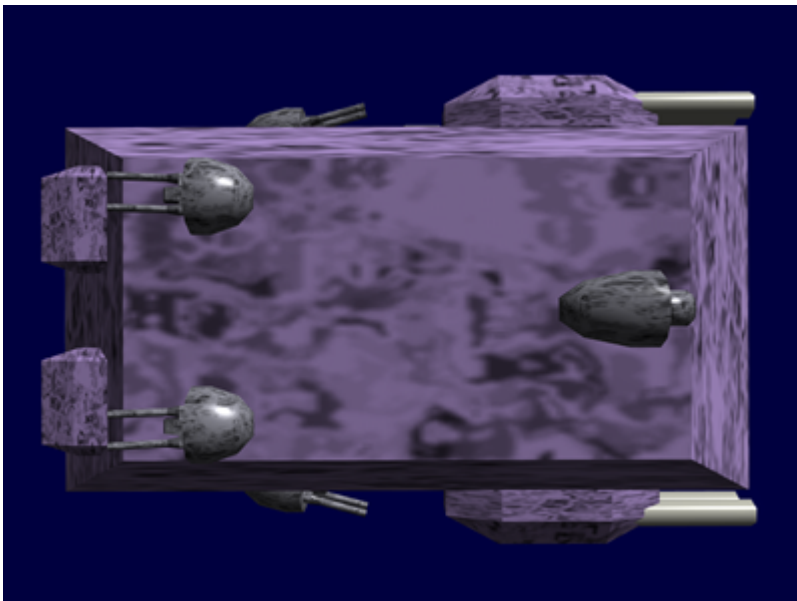
## Vehicle Complement

- 6 [Shuriken-class Fighter Drone](#) (2 wings)

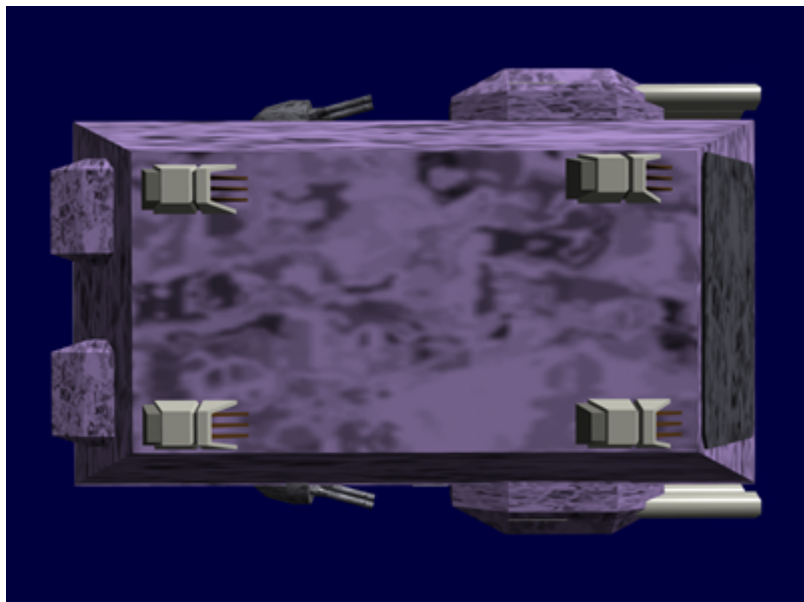


## Images

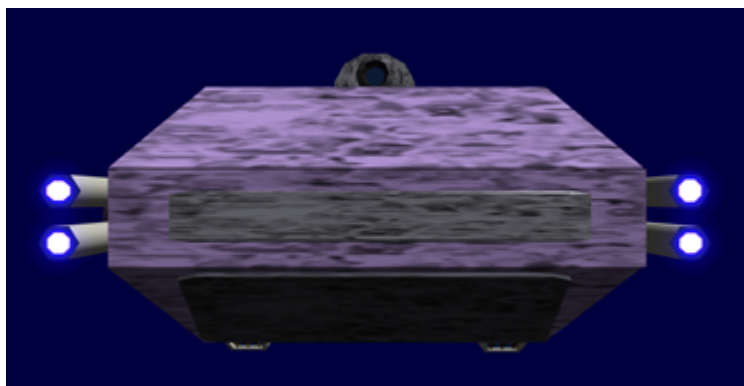
### Top view



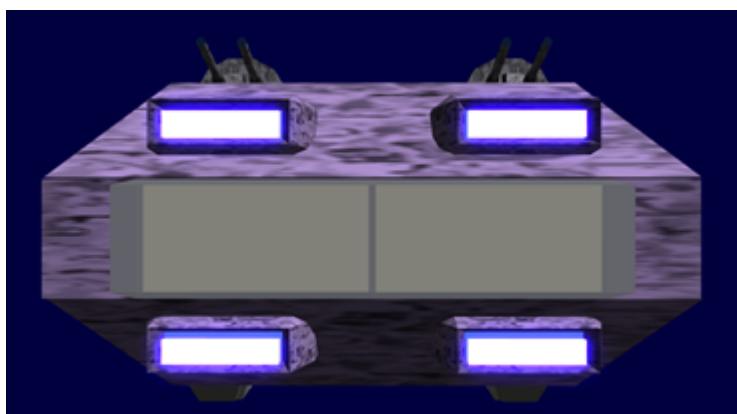
## Bottom view



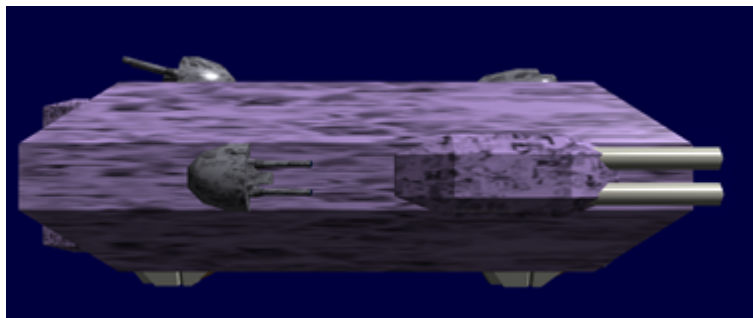
## Bow View



## Aft View



## Starboard View



## Port View



## OOC Notes

Authored by [Nashoba](#) and approved by [Wes](#) on Sep 19, 2009 <sup>1)</sup>

<sup>1)</sup>  
<https://stararmy.com/roleplay-forum/index.php?threads/uoc-tantou-class-gunboat.4479/>

From:  
<https://wiki.stararmy.com/> - **STAR ARMY**

Permanent link:  
[https://wiki.stararmy.com/doku.php?id=corp:yugumo\\_corporation:motoyoshi\\_fleet\\_yards:ships:tantou\\_gunboat](https://wiki.stararmy.com/doku.php?id=corp:yugumo_corporation:motoyoshi_fleet_yards:ships:tantou_gunboat)

Last update: **2023/12/21 05:24**

