

# Shuryoku-Class Super Freighter

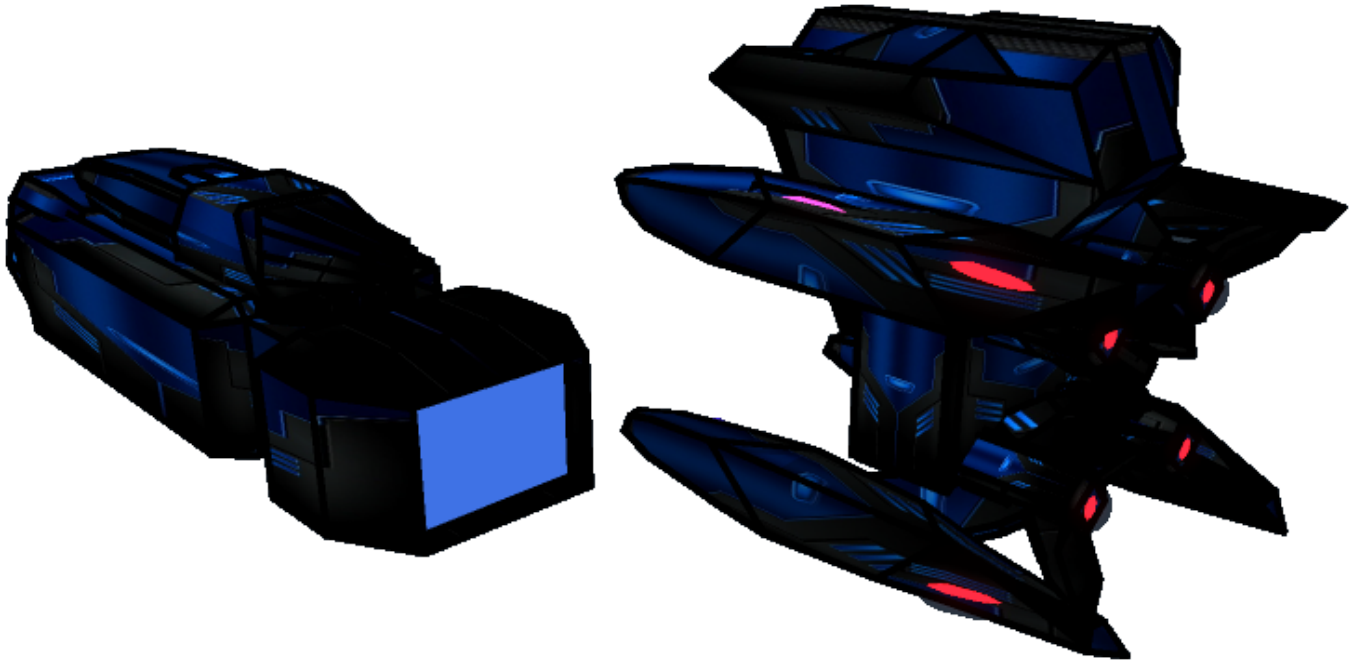
The Shuryoku-Class Super Freighter is a Super Freighter designed by [Yugumo Corporation](#) for civilian and [Star Army of Yamatai](#) use in [YE 42](#).



## About The Shuryoku-Class Super Freighter

The power of a nation's logistical engine is important. The need to rush goods safely and efficiently between [star systems](#) is vital; it is increasingly vital for the military, like the [Star Army of Yamatai](#). In [YE 42](#), at the height of the [Kuvexian War](#), the [Yugumo Corporation](#) was tasked with helping to rebuild the [First Expeditionary Fleet](#). Analysts were faced with a new project, the [Expeditionary Fleet Supply Chain Program](#), proposed by [Ketsurui-Motoyoshi Katsuko](#) who sought to modernize the supply chain to the Fleets of the [Star Army of Yamatai](#). With fleets remaining deployed longer, and deep into the territory of the [Interstellar Kingdom Of Kuvexia](#) it was vital to keep their supply chains viable and active. One of the earliest solutions approved was the Shuryoku-Class Super Freighter.

The Shuryoku-Class Super Freighter was designed not to be just another cargo ship, it was designed to be a true container ship and would allow for the movement of massive shipments of [Standard Starship Cargo Containers](#) between destinations. The initial design proposed a two-part vessel, but later in the design project after the proposal for the [Asuga-Class Tug](#) was approved, it was decided that the ship would become automated; this called for utilization of [PANTHEON](#) IES Systems in [Star Army of Yamatai](#) applications and [MIKO Electronics Suite](#) for civilian freighters.



## Appearance of the Shuryoku-Class Super Freighter

The Shuryoku-Class Super Freighter is one of the largest cargo vessels ever made. It consists of two main sections, a large rectangular cargo pod where stacks of [Standard Starship Cargo Containers](#) are stored during their transit between destinations; and the second section which is the workhorse or engineering pod of the ship which consists of four super-heavy sublight engines and the massive quad-mounted [Mizu II Series CDD -Tsunami II Drives](#).

This behemoth container ship was designed so that the engineering section of the ship could deliver the large cargo pod filled with containers to a destination, then detach and pick up another cargo pod either already loaded or be loaded at another destination. The cargo pod has the distinctive blue graviton field often used in shuttle bays to maintain the atmosphere, which assists with the control of conditions in the pod.

## Statistics and Performance

### General Statisics

Important information about the Shuryoku-Class Super Freighter.

- Class: [Yu-L2-1A \(Civilian\)](#) and [Yu-L2-1B \(Star Army\)](#)
- Type: Super Freighter/Container Ship
- Designers: [Yugumo Corporation](#)

- Manufacturer: [Yugumo Corporation](#), [Jiyuu System](#)
- Fielded by: [Yugumo Corporation](#), [Star Army of Yamatai](#) and [Yamatai Star Empire](#)
- Production: On Demand.
- Production Notes: Currently accepting orders from the [Star Army of Yamatai](#)
- Sources: [Star Army Military Industrial Complex](#) (For the Yu-L2-1B)
- Price: Negotiable, starting at 830,000 KS contact [Motoyoshi-Igarashi Yuka](#) via [SYNC](#) to negotiate on multiple units (Civilian) or Military Contract

## Passengers

- **Crew:** Automated under [MIKO Electronics Suite](#) (1A), or [Escort Integrated Electronics System \(EIES\)](#) (1B), no operator is required.
- **Maximum Capacity:** Automated, No passengers. In an evacuation, the cargo pod could be used to carry people for a short period of time.

## Dimensions

- Length: 1,010 meters (fully assembled) / 780m (cargo pod) / 230m (workhorse)
- Width: 350 meters
- Height: 300 meters
- Decks: There is no decks. This is an automated ship.

## Propulsion and Range

In compliance with the [Star Army of Yamatai Starship Speeds](#):

- [Continuum Distortion Drive](#): 12,500c (~1.43 ly/h)
- Hyperspace Fold Drive: 394,470c (0.75 ly/m)
- Sublight Engines: 0.20c (1A) 0.25c (1B)
- Lifespan: 50 Years
- Refit Cycle: Every 5 Years

## Damage Capacity

See [Damage Rating \(Version 3\)](#) for an explanation of the damage system.

- Tier: 10 (1A), 12 (1B)
- Shields: 10 (1A), 12 (1B)

## Inside the Ship

The Shuryoku is an automated ship, it does not have areas to support a crew.

## The Cargo Pod

The Shuryoku Cargo Pod is the vessel for [Standard Starship Cargo Containers](#). It has tracks, cranes and robotic arms all designed to move, load, unload and stack [Standard Starship Cargo Containers](#). Forcefields (Graviton Fields) similar to those found on [Star Army of Yamatai](#) Shuttle Bays allow for the maintenance of the various atmospheric and environmental conditions inside of the container holds. Forcefields, magnetic clamps and other measures to secure cargo can also be swapped in and out in different configurations.

Cargo Information is below.

- **Cargo Pod Interior Space:** 700m (length) x 325m (width) x280m (height).
- **Theoretical Maximum:** (Not realistic due to cranes and other equipment.) 35 x 65 x 70 Huge [Standard Starship Cargo Containers](#).

## Workhorse and Engineering Pod

The Workhorse Pod is the power behind the Shuryoku. Several systems bays are accessible when the ship is docked at Star Fortresses or larger vessels in the fleet for maintenance and repairs. There is an emergency control room accessible by a dorsal hatch on this pod of the ship for emergency situations.

## Systems

The Shuryoku has many systems, all of which are fully automated. Systems can be accessed or repaired at a Star Fortress or Starbase.

## Armored Hull

The hull of the Shuryoku for civilian ships is made of [Durandium Alloy](#) (1A). The version for the [Star Army of Yamatai](#) is made of a mix of [Yamataium](#), and [Xiulurium](#). (1B)

Most interior areas are coated in [Yarvex](#).

## Integrated Electronics System

The 1A Civilian model is equipped with the [KAIMON-Gate](#) suite with its included communications and sensor systems. It also has the uplink and [PANTHEON/SYNC](#) connect module.

On the 1B Version for the [Star Army of Yamatai](#), [Escort Integrated Electronics System \(EIES\)](#) is the primary computer, communications and sensor suite of the Shuryoku-Class Super Freighter.

## Power Systems

The Shuryoku-Class Super Freighter has six high-output [Aether Generators](#) (1B) or six high-output [Kaminari Quantum Foam Generators](#) (1A) . Four are located in the Workhorse Pod, and two are located in the Cargo Pod.

## Propulsion Systems

The Shuryoku-Class Super Freighter is equipped with four heavy-duty [Turbo Plasma Drives](#) (1A) or [Turbo Aether Plasma Drives](#) (1B), the drives are specially designed for hauling. It is also equipped with four Tsunami II [Mizu II Series Continuum Distortion Drives](#). Maneuvering Thrusters ( [ion thrusters](#)) are used primarily attitude adjustment, docking and station keeping.

The Cargo Pod, just has Maneuvering Thrusters ( [ion thrusters](#)).

The ship is equipped with the [Yumeoibito Hyperspace Fold Drive](#) built by the [Yugumo Corporation](#).

## Combined Field System

The [Mizu II Series Continuum Distortion Drives](#) have built in [Combined Field Systems](#).



## Graviton Beam Arrays

The Shuryoku-Class Super Freighter is equipped with six [KFY Graviton Beam Projector](#) to assist with loading and unloading operations.

## Weapons

The Shuryoku-Class Super Freighter relies on escort ships and its defensive systems to avoid combat situations. It has no weapons of its own.

It does have 16 variable mounts that the customer can apply their own weapon systems with easy integration.

# OOC Notes

Andrew created this article on 2020/02/01 23:23.

Approved here be Charmaylarg

- Minor update to KAIMON from MIKO Electronics Suite in YE 43.

Products & Items Database	
Product Categories	starships
Product Name	Shuryoku-Class Super Freighter
Nomenclature	Yu-L2-1A
Manufacturer	Yugumo Corporation, Yugumo Fleetworks
Year Released	YE 42
Price (KS)	830 ,000.00 KS
Star Army Logistics	
Supply Classification	Class A - STARSHIPS

From:  
<https://wiki.stararmy.com/> - STAR ARMY

Permanent link:  
[https://wiki.stararmy.com/doku.php?id=corp:yugumo\\_corporation:ships:shuryoku-class\\_super\\_freighter](https://wiki.stararmy.com/doku.php?id=corp:yugumo_corporation:ships:shuryoku-class_super_freighter)

Last update: 2023/12/27 14:29

