

Starchaser III-Class Ferry

The Starchaser III-Class Ferry is a civilian transport ship designed for [PAINT](#) and built by the [Yugumo Corporation](#) to replace the aged [StarChaser II Class Civilian Ferry](#) in [YE 42](#).



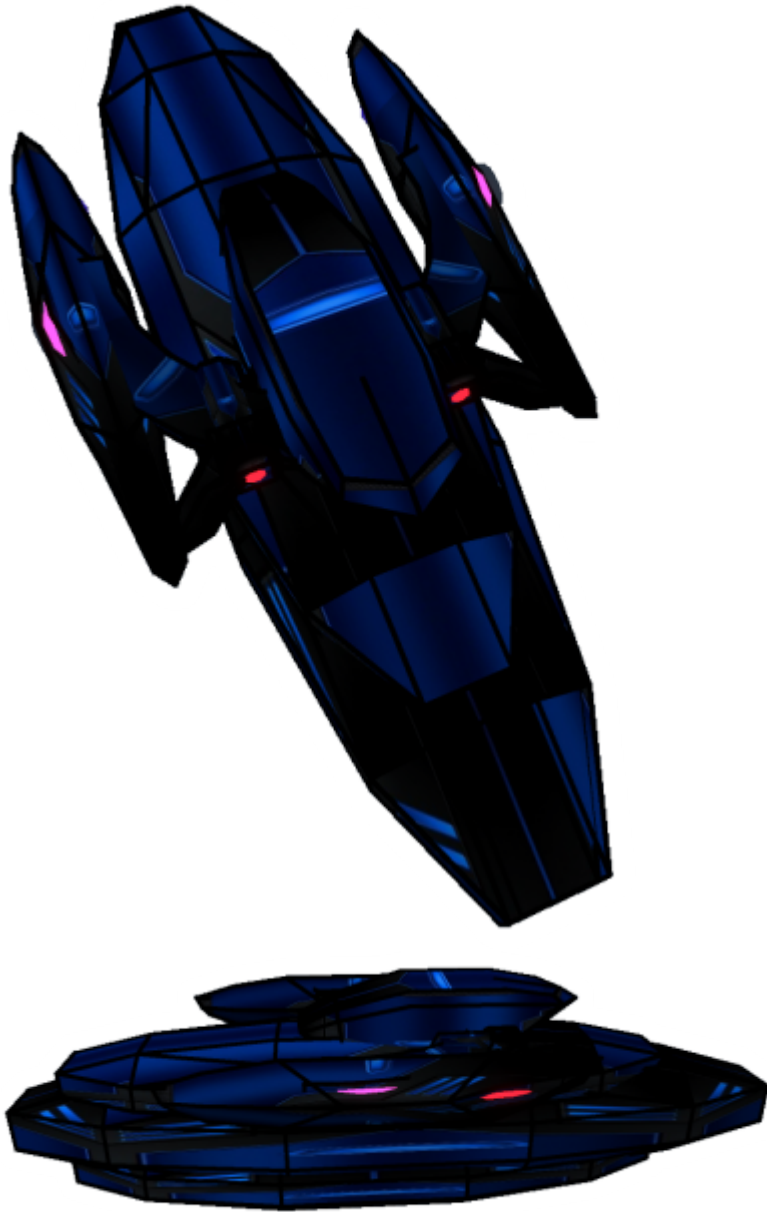
The Starchaser Tradition

In [YE 42](#), with the active patrols of the [First Expeditionary Fleet](#) and the return of the [Motoyoshi Clan](#) to the [Jiyuu System](#) and the rest of the Outer Colonies of Yamatai, safety and prosperity had returned to the region. The [Motoyoshi Clan](#) through the [Yugumo Corporation](#) made investments into infrastructure, increased employment and welcomed home many refugees that had been displaced by the fall of the [United Outer Colonies](#). One of the investments made was to restore and expand active [PAINT](#) to the region. The service began with salvaged [StarChaser II Class Civilian Ferry](#) vessels and as travel from the rest of the [Yamatai Star Empire](#) increased the need for a replacement for these salvaged ships was proposed.

The Starchaser III-Class Ferry that would be produced by the [Yugumo Corporation](#) would follow in the footsteps of the [StarChaser II Class Civilian Ferry](#) and [StarChaser Class Civilian Ferry](#). The new ship would be outfitted for expanded service in the local systems as well as to destinations across the [Yamatai Star Empire](#).

Appearance

The passenger section is a large tapered pod and it sits beneath the engineering and command section of the craft that deploys a large nacelle pod on either side of the vessel.



Statistics and Performance

The Starchaser III is designed to carry passengers and light cargo as apart of [PAINT](#).

- Class: [Yu-Y2-1A](#)
- Type: Civilian Ferry
- Designers: [Yugumo Corporation](#)
- Manufacturer: [Yugumo Corporation](#), [Jiyuu System](#)
- Fielded by: [Yugumo Corporation](#), [Star Army of Yamatai](#) and [Yamatai Star Empire](#)
- Production: On Demand.
- Production Notes: [PAINT](#)

- Sources: Outer Colonies of Yamatai Industrial Complex
- Price: [PAINT](#) Subsidy / [Motoyoshi Clan](#) Infrastructure Grant, (Other 285,500KS)

Passengers

The Starchaser III is a personnel transport ferry.

- **Crew:** 20 Crew and Service Personnel, 1 Operator During Emergency operation.
- **Maximum Capacity:** 2,500. About 3,300 people can fit aboard in an emergency, but the ship would be extremely cramped.

Dimensions

The Starchaser III is a moderate-sized civilian vessel.

- Length: 310 meters
- Width: 170 meters
- Height: 75 meters
- Decks (Sphere): 7 Decks

Propulsion and Range

In compliance with the [Star Army of Yamatai Starship Speeds](#):

- [Continuum Distortion Drive](#): 12,500c
- Hyperspace Fold Drive: 0.4 ly/min
- Sublight Engines: 0.30c
- Lifespan: 50 Years
- Refit Cycle: Every 5 Years

Damage Capacity

See [Damage Rating \(Version 3\)](#) for an explanation of the damage system.

- Tier: 10 (Light Starship)
- Shields: 10 (Light Starship)

Inside the Starchaser III

The Starchaser III is a state-of-the-art civilian ferry with a modular deck loadout designed for both short and long haul runs for [PAINT](#).

General Notes:

- All Decks have a transfer compartment that has stairs leading to the other decks of the ships, lift service, and restroom facilities.
- Universal Airlocks are located in the Outer Deck sections of all passenger access, and Cargo Bay access is via the aft of the ship.

Deck Layout

The deck load-outs can be swapped depending on long or short-haul trips.

Configurations		
Deck	Short-Haul	Long-Haul
1	Command/Engineer Deck	Command/Engineer Deck
2	Standard Economy Class	First Class
3	Standard Economy Class	First Class
4	Standard Economy Class	Standard Economy Class
5	Standard Economy Class	Standard Economy Class
6	Standard Economy Class	Standard Economy Class
7	Crew and Cargo	Crew and Cargo



Interior Information

Clean, efficient, and economical vessels designed for the transport of people between the worlds of the Empire.

Standard Economy Deck

The *Standard Economy Deck* is designed for commuters on short-haul flights and passengers who wish to have economical accommodations for longer-haul flights.

The deck is divided into two major areas; the outer deck which gives views of space through [Transparent Durandium](#) viewports. The forward half outer deck also houses 12 escape pods, six each on both the port and starboard sides of the ship.

The forward section of the inner deck also houses 12 *Private Budget Berths* which are generally used by traveling business and corporate passengers not wanting to pay the additional amounts for the First-Class decks on longer-haul flights. Each Private Budget Berth features a set of bunk-style twin beds and a small office area with network access. Economy seating banks with comfortable recliner chairs and

individual media access through [KAIMON-Gate](#) are located in the larger seating area in the aft and forward sections of the inner deck.

Food and Drink Service

Food and Drink Service on Standard Economy Decks is provided by:

- [Kikyo Pie Company](#)
- [Warm and Sweet](#)
- [Tachi's](#)

[Kikyo Pie Company](#) and [Warm and Sweet](#) deliver to Private Budget Berths.

Standard First Class Deck

Longer flights have Standard First-Class Decks available for additional costs. Like the Standard Economy-Class Decks, these decks are divided into an Inner and Outer Deck Section.

The Inner Deck of the Standard First-Class Deck offers 28 premium berths which include luxury [Nest-Style](#) beds¹⁾ with fine linens, an office area with media access through the [KAIMON-Gate](#) and small private bathrooms with both a toilet and a small shower. They accommodate 3 to 4 individuals.

The aft half of Outer Deck of the Standard First-Class deck offers eight Super Premium Suites (four port, four starboard) which include extra-large, luxury [Nest-Style](#) beds²⁾ with fine linens, an office area with media access through the [KAIMON-Gate](#) and a larger bathroom with jacuzzi-style tub, toilet and a shower unit. The Super Premium Berths receive a bottle of 🍷 [Umeshu](#) from [Ainu Orchards](#). These luxury accommodations can hold up to 8 individuals. The Outer Decks provide spectacular views of space from [Transparent Durandium](#) viewports. The forward half of the Outer Deck houses twelve escape pods, six port and six starboard.

Premium Amenities in First Class are provided:

- Food and Drink Service through [Takeda House](#).
- A fully equipped 🧘 [Onsen](#) and Fitness Center with exercise machines and Massage Services offered.
- First Class Passengers wishing to visit [Tachi's](#) on an Economy Deck receive complimentary food and drink as well as priority seating.
- The [Kikyo Pie Company](#) and [Warm and Sweet](#) on the Economy Decks deliver to first class berths and suites.
- [Volumetric Windows](#) with [Yugumo Corporation](#) ad services are scattered through the ship.

Command and Engineering Deck

The Command and Engineering Deck feature a small three-station bridge and the engineering compartment which houses the [KAIMON-Gate](#) and other key systems of the ship. This deck also has a

small conference facility and crew lounge with comfortable couches and chairs for employee rest breaks.

Crew and Cargo Deck

The Crew and Cargo Deck features a spacious open concept cargo bay with room for [Standard Starship Cargo Containers](#) and passenger luggage.

The forward section of the Inner Cargo Deck also features the Crew Berths which have the same set up as the Premium Berths on the First-Class Deck. There are two Super Premium Suites in the Outer Cargo Deck reserved for the Captain and First Officer of the vessel. Additional Escape Pods, 24 in total, are located on both the starboard and port sides of the Outer Cargo Deck, fore and aft with six on each quarter.

Cargo Bay access is through the large forcefield protected doors in the aft of the ship.

Systems

Armored Hull

The ship's hull is primarily composed of [Durandium Alloy](#), viewports and windows are made of [Transparent Durandium](#). All Inner structures are coated in [Yarvex](#).

Starchaser Construct Assembly	
Primary SpaceFrame	Forcefield Reinforced Durandium Alloy Major Truss
Secondary SpaceFrame	Durandium Alloy Secondary Truss and Rod Assembly
Outer Plates	Durandium Alloy Plate
Lining	Yarvex Lining

Power Systems

The Starchaser uses two [Kaminari Quantum Foam Generators](#) and capacitor system. Reserve and Emergency power are granted through an additional capacitor system which are kept fully charged at all times.

Integrated Electronics Systems

The Starchaser III Ferry is equipped with the [KAIMON-Gate](#) suite with its included communications and sensor systems. It also has the uplink and [PANTHEON/SYNC](#) connect module.

Propulsion Systems

The Starchaser III is equipped with two heavy-duty [Hoshi III Series Multi-stage Turbo Plasma Drives](#). It is also equipped with two Nami II [Mizu II Series Continuum Distortion Drives](#) and is capable of extending its distortion field around other ships. Maneuvering Thrusters ([ion thrusters](#)) are used primarily for attitude adjustment, docking, and station keeping.

Landing Struts

The Ferry is equipped with landing struts. They are pneumatically driven and are used to raise or lower the ship and level it once it is in place.

The ship also has a gravity engine system for operation in the atmosphere.

Combined Field System

The [Mizu II Series Continuum Distortion Drives](#) have built in [Combined Field Systems](#).



The ship is equipped with the [Yumeoibito Hyperspace Fold Drive](#) built by the [Yugumo Corporation](#).

Emergency Systems

The Starchaser III is equipped with emergency systems that were contracted out to [Geshrinari Shipyards](#). It has a [Ge-Y1-E3104 - Automatic Fire Suppression System](#) and [Geshrinari Blast Shutters](#) in the event an emergency occurs.

In the event of a catastrophic failure or impending doom, the ship has many [Ge-X3300 - Type 33 Escape Pods](#). (See Deck Layout)

Life Support Systems

The Starchaser III is equipped with civilian versions of the [Life Support Systems](#) that the [Yugumo Corporation](#) produces for the [Star Army of Yamatai](#).

Weapons

The Starchaser III is not equipped with any weapons.

Vessels of This Class

There have been a number of ships of this class produced.

Starchaser III Ferries					
Registry	Ship Name	Configuration	Assignment	Year Built	Notes
CYP-C01-0001	<i>Empress of Yamatai</i>	Commuter	PAINT	YE 42	In Service
CYP-C01-0002	<i>Mercy of The Motoyoshi</i>	Commuter	PAINT	YE 42	In Service
CYP-C01-0003	<i>Spirit of The Colonies</i>	Commuter	PAINT	YE 42	In Service
CYP-C01-0004	<i>Spirit of Jiiyuu</i>	Long Haul	PAINT	YE 42	In Service
CYP-C01-0005	<i>Spirit of Siren</i>	Long Haul	PAINT	YE 42	In Service
CYP-C01-0006	<i>Spirit of Shugosha</i>	Commuter	PAINT	YE 42	In Service
CYP-C01-0007	<i>Spirit of Koutoksu</i>	Commuter	PAINT	YE 42	In Service
CYP-C01-0008	<i>Spirit of Gensou</i>	Commuter	PAINT	YE 42	In Service
CYP-C01-0009	<i>Spirit of Yuujou</i>	Long Haul	PAINT	YE 42	In Service
CYP-C01-0010	<i>Spirit of Kotoku</i>	Long Haul	PAINT	YE 42	In Service
CYP-C01-0011	<i>Colonial Hummingbird One</i>	Long Haul	PAINT	YE 45	In Service
CYP-C01-0012	<i>Colonial Hummingbird Two</i>	Long Haul	PAINT	YE 45	In Service

OOC Notes

[Andrew](#) created this article on 2020/02/04 20:27.

- Art for the Starchaser III models was done in DOGA by [Andrew](#), Deck Layouts and all images were created and edited in Fireworks MX also by [Andrew](#).
- [Approval Thread](#).
- Minor update to [KAIMON](#) from [MIKO Electronics Suite](#) in YE 43.

Products & Items Database	
Product Categories	starships
Product Name	Starchaser III-Class Civilian Ferry
Nomenclature	Yu-Y2-1A
Manufacturer	Yugumo Corporation , Yugumo Fleetworks
Year Released	YE 42
Price (KS)	485 ,500.00 KS

1)

passengers may request a king or two-queen formats when booking

2)

passengers may request two-king or four-queen formats when booking

From:

<https://wiki.stararmy.com/> - **STAR ARMY**

Permanent link:

https://wiki.stararmy.com/doku.php?id=corp:yugumo_corporation:ships:starchaser_iii-class_ferry

Last update: **2023/12/21 04:21**

