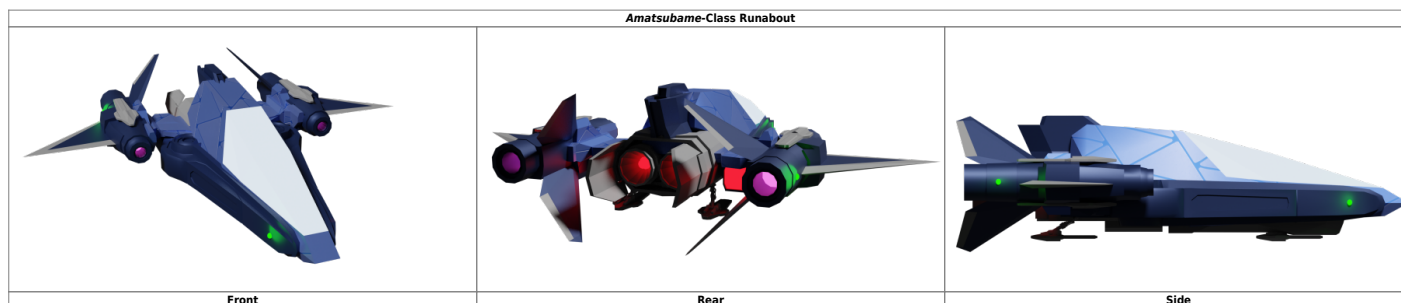


Amatsubame-Class Runabout

The *Amatsubame*-class Runabout is a fast, luxurious sport/racing craft optimized for performance, endurance, and agility.

Amatsubame-Class Runabout

A luxurious, high-performance sport and racing craft that is fast and agile while remaining comfortable.



About the Amatsubame-Class Runabout

Derived from the [Mozu-Class Starfighter](#), this sleek, high-performance craft has been stripped of armor and armaments, but retained the powerful drives and sophisticated systems of the fighter. Another collaboration between [Yugumo Fleetworks](#) and [Osman Heavy Industries](#), the first two prototypes were developed and tested in late YE 44 as [Orchid Signature](#) models with [Umikagami](#) and [ELECTRA](#), to be presents for [Motoyoshi Eidan](#) and [Motoyoshi Kuroko](#). However, the craft didn't become available on the open market until early YE 45. Amatsubame (雨燕) means “[swift](#)¹⁾” in [Yamataigo](#).

Hario Edition

In [Yamataigo](#) the *Hario* (針尾) refers to *Hario-Uen* (針尾雨燕), known in [Trade](#) as the [needletail swift](#), the [Yamataian](#) bird with the fastest horizontal flight. This upgrade accelerates more quickly, turns more sharply, and overall is just faster and more maneuverable than even the base *Amatsubame*. It has custom interior trim and interface paradigms, that emphasize the *Hario Edition* as the birth of a new racing legacy.

The *Hario* edition lacks the [utility systems](#) of the base model, having had them removed to lessen the mass and increase performance.

Orchid Signature

The [Orchid Signature](#) trim level has both the [Hario Edition](#) upgrades as well as the [Chairman Upfit Package](#), as well as a few other special touches. It features exclusive interior trim and design language, and a custom interface paradigm. It maneuvers even more agilely, and accelerates and decelerates even more quickly than even the [Hario Edition](#).

The Orchid Signature retains the [utility systems](#) of the base model that are removed in the [Hario](#), making up the performance and then some by more powerful, more sophisticated, and commensurately more expensive systems.

Mission Specialization

The *Amatsubame*-class Runabout is ideal for the following mission profiles:

- Very fast sublight travel.
- Leisure and recreation.
- Ship dinghy.
- Racing (Particularly the [Hario Edition](#)).

Appearance

Taking after the [Shuriken-class Fighter Drone](#) in terms of profile, the *Amatsubame* is an angular, slightly-dagger shaped machine with a prominent cockpit window at the front of the fuselage. However, the *Amatsubame* falls into the Yugumo Fleetworks [design ethos](#) with its sleek hull and elegant, yet aggressive nacelles. In its default color scheme, the fighter has a mix of dark blue and black shades, with purple highlights.

Statistics and Performance

The *Amamatsubame*-class Runabout is a fast, high-performance sport and racing craft optimized for speed and agility.

General Statistics for the Yu-T2-1A <i>Amatsubame</i> -class Runabout	
Year Introduced	YE 45
Class/Nomenclature	Yu-T2-1A
Designers	Yugumo Fleetworks , Osman Heavy Industries
Manufacturer	Yugumo Corporation
Fielded By	Yugumo Corporation and Yamatai Star Empire
Range	1 Month
Maintenance Cycle	After Every Race or Every Two Months
Lifespan	10 Years
Pricing	36,000 KS

General Statistics for the Yu-T2-1A <i>Amatsubame</i> -class Runabout	
Hario Edition	48,000 KS
Chairman	225,000 KS
Orchid Signature	300,000 KS
<i>Umikagami</i> Aquatic Package	+144,400 KS Factory, +180,000 KS Retrofit

Passengers

- Crew: 1 Pilot
- Maximum Capacity: There are accommodations for 1 person. Roughly 2 people can *fit* aboard in an emergency, but the craft would be extremely cramped.

Dimensions

- Length: 7 Meters (23.59 Feet)
- Width: 7 Meters (23.59 Feet)
- Height: 2.5 meters (8.43 feet)

Propulsion and Range

- [Mizu II Series - Ripple II CDD](#): 18,750c
- [Yumeoibito Hyperspace Fold Drive](#): 0.75 ly/m
- Sublight [Hoshi III Series Multi-stage Turbo Plasma Drives](#) and CFS: 0.425c (127,411 km/s), [Hario Edition](#)²⁾ 0.45c (134,907 km/s)
- Atmospheric Speed (Hovering via CFS and Anti-Gravity System): 600 km/h, [Hario Edition](#)³⁾: 720 km/h
- Maximum Atmospheric Speed: 🌀 [Mach 5](#), [Hario Edition](#)⁴⁾: 🌀 [Mach 5.5](#)
- Range: Unlimited in Theory
- Lifespan: Review Every 10 Years
- Refit Cycle: Every 5 Years or as Needed

Damage Capacity

See [Damage Rating \(Version 3\)](#) for a guide to damage ratings.

As an [unarmored](#) craft, the *Amatsubame* takes damage as one [tier](#) lower than it is. The [Orchid Signature](#) is an exception, often piloted by those for whom security is paramount.

- Hull: Tier 7 (Light Mecha), takes damage as Tier 6 (Heavy Armor), except [Orchid Signature](#)
- Shields: Tier 7 (Light Mecha)

Interior

The *Amatsubame*-class Runabout is as comfortable as a single-seat racer can get. That is to say that while it does not compare to the comfort of a larger vessel, it is luxurious by the standards of its class.

Cockpit

The single-seat cockpit features a [Transparent Durandium](#) canopy with adjustable [Omnihue](#) opacity, reflectivity, and tint and [volumetric window](#) viewscreen overlay. All functionality of the ship is present in full and control layouts can be customized via SQUID and tactile [Solid Volumetrics](#). The comfortable, ergonomic, multi-adjustable acceleration couch features a cupholder, adjustable armrests, massage, ventilation, lumbar support, [SQUID](#) interfaces, and [Virtual Home Sleep](#). The emergency lockers are located in the interior, to either side of the seat.

Ship Systems

The following section contains information about the *Amatsubame*-class Runabout's systems.

Hull and Hull Integrated Systems

The *Amatsubame* utilizes a primarily [Durandium Alloy](#) hull structure. All windows and viewports utilize [Transparent Durandium](#).

Amatsubame-class Hull and Frame Assembly	
Primary SpaceFrame	Forcefield Reinforced Durandium Alloy Major Truss
Secondary SpaceFrame	Durandium Alloy Secondary Truss and Rod Assembly
Outer Skin	Sitearium coated Durandium Alloy skin with Omnihue Matrix
Lining	Yarvex Lining

Power Systems

The *Ameatsubame* uses [Kaminari Quantum Foam Generators](#) for its primary power system. The supercapacitor banks have enough backup power for 48 hours of minimal operation, 18 hours of moderate-load operation, and no less than 3 hours of intense operation such as high-speed maneuvering or full-power shield deployment.

Backup Power

A [Tsuyosa Series Matter-Antimatter Reactor](#) with [Matter Collection System](#) provides backup and auxiliary power.

Computers and Electronics

The *Amatsubame*-class Runabout is equipped with the [KAIMON-Passage](#) suite with its included communications, targeting, interface, and sensor systems. It also has the uplink and [PANTHEON/SYNC](#) connect module.

It features the [Sorakagami Aerospace Operations Suite](#), with an option for [ELECTRA](#) as a software upgrade for qualified operators.

In addition to its [KAIMON Kagami sensors](#), there are also a [Mineral Scanner](#) and [SachiTech Tech-Scanner](#) available to the pilot.

Sorakagami

The *Amatsubame*-class Runabout includes the [Sorakagami Aerospace Operations Suite](#) integrated from the factory.

Umikagami

The *Amatsubami*-class Starfighter was built to minimize the effort needed to fit it with the [Umikagami Subsurface Operations Suite](#) to enabling a range of sub-aquatic applications. The base *Amatsubam* does not come with the [Umikagami](#) hardware, but it is an available option from the factory, or aftermarket with a zero-configuration, plug and play upgrade path.

Emergency Systems

The *Amatsubame*-class Runabout is equipped with [Yugumo Standard Emergency Systems](#) and reactive atmospheric force fields in the event of vacuum exposure.. Should the craft's power or communication's systems be inoperable it comes with a built in subspace distress beacon with its own power source, good for 120 hours of continuous operation.

Cockpit Pod

In the event of a catastrophic failure or impending doom, the cockpit doubles as a downsized ["Ikigai" Type 43 Escape Pod](#) which can eject from the main body of the craft. As a tertiary measure in the event that the cockpit pod is too damaged to function, the craft has an ejection seat which is equipped with a [EM-G19 - Survival Kit](#).

Emergency Lockers

There is one each of [Yugumo Standard Damage Control Alcoves](#), [Yugumo Standard First Aid Lockers](#), [Yugumo Standard Armory](#), and [Yugumo Standard Survival Lockers](#) in the cockpit. However, given the small size of the craft, the lockers contain only a quarter of the supplies and equipment, enough to sustain a single pilot in the event of a calamity. In essence, the lockers are downscaled from their standard variants. There is also a ration locker, which contains enough [emergency ration pills](#) for 1 month and a link to the water tap. Alternatively, the ration locker can be retrofitted into a small induction charging locker with spare capacitors for [technological android](#) pilots. These are most often used for [Consort](#) pilots, but most other android models are compatible as well.

Life Support and Environment Systems

The *Amatsubame*-Class Runabout is equipped with [Yugumo Standard Life Support Systems](#). The craft also features inertial compensators to protect the pilot from g-forces.

Propulsion

The *Amatsubame* utilizes a modified [Mizu II Series - Nami II CDD](#) which maximizes the CDD performance at 18,750c. Distortion coils are located in the wing pods on both sides of the craft. The CFS can also be used for sublight propulsion, up to 0.425c, or up to 0.45c for the [Hario Edition](#).

In addition to the CDD, the *Amatsubame* is equipped with two [Hoshi III Series Multi-stage Turbo Plasma Drives](#) for sublight speed. They are located in the rear of the ship. Sublight performance for the plasma drives usually can withstand up to 0.375c. Maneuvering Thrusters ([ion thrusters](#)) are used primarily for attitude adjustment, docking, and station keeping.

For hyperspace fold, the *Amatsubame* uses the [Yumeoibito Hyperspace Fold Drive](#).

The *Amatsubame* also has an Anti-Gravity System for landing and atmospheric operations.

Shield Systems

The *Amatsubame*-Class Runabout ighter's [Mizu II Series - Nami II CDD](#) is equipped with a [\(Civilian\) Combined Field System](#), supplementary shields, and navigational shielding. The primary shields create a [conformal or bubble](#) barrier.

Supplementary Shielding

For times when the [\(C\)CFS](#) is unavailable or its operation is undesirable such as when [sitearium](#) is energized. Running both supplementary defensive systems at the same time does not increase the

effective tier of the barrier, rather, they are used against different threats and the responding selected in realtime after threat analysis by the computer. As the supplementary shields do not contribute to the ship's defensive profile when the (C)CFS is active, it is wasteful to have the supplementary shields active while the primary shields are as well.

Electromagnetic shielding

The [Electromagnetic shields](#) are particularly good at deflecting the charged particles in many beam weapons. The shield created is a [conformal or bubble](#) barrier.

Gravitic shielding

[Gravitic shielding](#) are effective against kinetic weaponry and collisions. This shield also serves the special purpose of counteracting graviton beams. The shield created is a [conformal or bubble](#) barrier.

Navigational Shielding

Not intended for, or effective at, defense against starship weaponry, navigational shielding protects the ship against navigational hazards, such as fast-moving small masses and slow collisions with large masses. The deflectors allow for safe maneuvering without raising the profile of its sensor signature as much as the defensive shielding.

Landing Struts

The *Amatsubame*-class Runabout ighter is equipped with landing struts, they are pneumatically driven and are used to raise or lower the craft, and level it once it is in place.

Signature Reduction

The armor layer is impregnated with an [Omnihue](#) matrix, allowing effectively unlimited control over the coloration, pattern, text, and insignia of the surface. This serves as thermoptic camouflage and signature reduction, if set properly.

Sitearium

The *Amatsubame*'s armor, in addition to the [Omnihue](#), has layers of [sitearium](#) coating it, that allow for even more effectively reduced signature than the [Omnihue](#) alone. Note that when the [sitearium](#) is energized, acceleration or maneuvering under power, or moving in an atmosphere, disrupts the signature reduction effect, and any zero-point energy such as [QF Generator](#) or [Aether Generator](#) onboard must be

shut down, switching to supercapacitor banks or more traditional forms of secondary power, or the ship remains detectable by anyone looking for such signatures.

Weapon Systems

The *Amatsubame*-class Runabout is unarmed except for the [Plasma Projection System](#).

Plasma Projection System

The *Amatsubame* may be equipped with a [Plasma Projection System](#) array comprising various sizes of emitters. These also serve as secondary engines and maneuvering verniers, increasing the acceleration profile, maximum speed, and maneuverability of the craft. By redirecting power from the plasma system that powers the ship's propulsion, it may use excess weapons limitation capacity, up to a maximum of two [Tier Equivalent Weapon Groups](#)⁵⁾ worth of firepower in variably-sized plasma cannons and smaller plasma guns by using magnetic redirection to weaponize the ship's drive and maneuvering engine nozzle output. This negatively impacts the ships acceleration and maneuverability however, forcing power to be diverted from propulsion to weaponry. The effect is increasingly more pronounced the more free capacity that is used in this manner.

Default Defensive Loadout

Per corporate policy, the *Amatsubame*-class Runabout may only be sold armed within the [Yamatai Star Empire](#). It is sold commensurately more cheaply if unarmed.

- [Plasma Projection System](#) (Up to 2 [Tier Equivalent Weapon Groups](#) of Firepower)

Utility Systems

- 1 Omnidirectional [Scalable Graviton Beam Projector Array](#)
- 1 Small-sized [MultiStruct Multitool](#) (very limited storage)
- 1 [Harpoon Cable](#), adapted from the [Courier 2c 'Collector'](#), for anchoring and towing.

OOO Notes

[Yuuki](#) created this article on 2022/10/26 20:43. [Approved here](#) as sub article of [Mozu-Class Starfighter](#) by [Wes](#). Based on [Mozu-Class Starfighter](#) by [Immortal Cyan](#).

Art by [Alex Hart](#).

Products & Items Database	
Product Categories	small craft
Product Name	Amatsubame-Class Runabout
Nomenclature	Yu-T2-1A
Manufacturer	Yugumo Corporation , Yugumo Fleetworks
Year Released	YE 44
Price (KS)	36,000.00 KS
DR v3 max	Tier 7

1)

The bird.

2) 3) 4)
, ,

and [Orchid Signature](#)

5)

Individual weapons limited to a maximum [Tier 6](#)

From:
<https://wiki.stararmy.com/> - **STAR ARMY**

Permanent link:
https://wiki.stararmy.com/doku.php?id=corp:yugumo_corporation:small_craft:amatsubame-class_runabout

Last update: **2023/12/21 04:21**

