

Storm Chasers

Storm Chasers is a subsidiary venture of [Yugumo Corporation](#) specializing in adventure tourism and extreme sports entertainment formed in [YE 42](#).

About Storm Chasers

The violent, tempestuous weather of [Jiyuu IV](#) gave rise to a class of adrenaline-junkie adventurers, and [Yugumo Corporation](#) was not about to let that market go untapped. The potential for this revenue was realized when [Motoyoshi Kaoru](#) was touring the system, accompanied by her attach   [Motoyoshi Tachiko](#).

When attempting to land on [Jiyuu IV](#), the extreme weather caused great difficulties for the pilot. For some reason, the people of [Jiyuu IV](#) were not only out in the weather, with photography and [simulated sensation recording](#) equipment (and plenty of alcohol), but also *flying* small craft in it, even smaller than their shuttle. Terrified and impressed, [Kaoru](#) and [Tachiko](#) began to brainstorm a way for the [Yugumo Corporation](#) to profit from such reckless entertainment.

Logo



Motto

"Ride the Lightning"

General Information

Storm Chasers	
Directors	Motoyoshi Kaoru and Motoyoshi Tachiko
Faction	Yamatai Star Empire
Product Symbol	SC
Employees:	≅ 500-700

Headquarters

The company's headquarters is on [Jiyuu III](#), in [Tokyo](#) in an office building owned by [Yugumo Corporation](#).

Facilities

Storm Chasers has several landing and launch pads, garages, shelters, and storage sheds that make up their base camps across [Jiyuu IV](#) and a residential campus for their workers in order to conduct operations.

There is a resort hotel called “The Tempest” for guests to stay at between their adventures. It is located on the coast, and its three-meter thick [Transparent Durandium](#) dome gives amazing, if terrifying, views of the great breakers caused by hurricanes and tsunamis as they crash over the dome in a spectacle unobservable elsewhere in the [Kikyo Sector](#). The Tempest Resort, along with a few smaller hotels and forward camps near other adventure terrain have a capacity of about 2500 guests.

Another, even larger [Mountain Resort](#) is set to open in [YE 43](#), the first of several planned.

Structure

Storm Chasers follows the same corporate structure as all wholly-owned subsidiaries of [Yugumo Corporation](#).

Besides management, Storm Chasers employs several hundred people, most of them involved in hotels, restaurants, and other hospitality operations at the resorts. Other employees are administrative staff, drivers, pilots, guides, security, medical staff at the resorts' on-site medical facilities, and educational program staff.

Personnel



All sentient, non-management personnel of Storm Chasers must be members of, and are represented by the [Yugumo Workers Federation](#). The [Yugumo Workers Federation](#) ensures that all training and safety regulations are followed, and represents the employees in arbitrating any disputes they may have with [Yugumo Corporation](#).

Packages

Storm Chasers offers a variety of adventure packages for the different weather patterns of the planet. Twenty-percent discounts are given to [Star Army of Yamatai](#) personnel. Stays of a week or more are priced at five days per week. Prices include lodging, meals, instruction, equipment rental, and insurance policy. Packages include a stay at one of the resort hotels, typically the one closest to the weather phenomenon related to the package purchased, though this is not mandatory. Daily expeditions are available for the duration of the stay, with transports departing for the field, and returning every few hours around the clock. This allows for as many trips as guests can fit in, or are willing to take on, during their stay. *[Yugumo Corporation](#) is not responsible for the loss of life or limb while participating in Storm Chasers activities. Waivers are required.*

Ride the Lightning

- 1000 [KS](#) per day per person

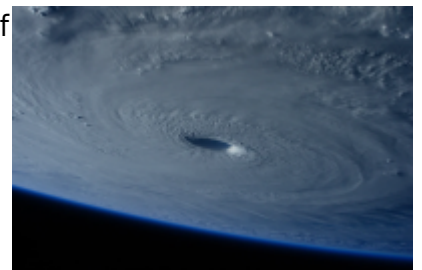
Storm Chasers' signature package, the one that started it all. Above the rainforests of [Jiyuu IV's](#) coastal mountains, near-perpetual thunderstorms darken the sky with their purple-grey masses, until they're lit by the intense flashes of lightning between clouds, and between cloud and ground. Atmospheric phenomena that are rare elsewhere such as [ball lightning](#) are commonplace (and incredibly hazardous). Although the Ride the Lightning Package is perhaps the most sedate package available, by comparison, it still offers plenty of thrills and is particularly popular with photographers.



Rock You Like a Hurricane

- 1250 [KS](#) per day per person

The awesome might of wind and sea come together for a demonstration of nature's might. The tropical and subtropical coasts of [Jiyuu IV](#) are wracked incessantly by monstrous hurricanes, battered by howling winds and crashing waves. Experience these great storms from arms to eye. Extreme surfing, hurricane parasailing, and high-altitude storm-diving are all-star attractions on the most intense adventure in known space.



Tornado Alley

- 750 [KS](#) per day per person

On the flat highland plains of [Jiyuu IV](#), [dust devils](#) are a constant sight, rising into the sky by the hundreds like the skyscrapers of a megacity. They're absolutely dwarfed by the frequent tornadoes that occur almost-daily, scouring the steppe with winds blowing as fast as an inertial control system can hover. Surf the winds in a [Pellis Intelligent Survival Suit](#), dodging debris hurtling at 50 meters a second, or just take your camera and haul at full speed across the plains in an off-road vehicle. Tornado Alley is the rush you've been craving.



The Tempest

- 2500 [KS](#) per day per person

The most deluxe package Storm Chasers offers, this is a multi-day tour of the planet's violent weather systems, including hurricanes, thunderstorms, and tornadoes. At least one day is spent in each weather zone, so that guests can experience the full gamut of extreme weather, planetwide. As such, this package has a minimum three-day booking. It includes exclusive amenities, priority access to expedition space, and personal adventure guides.

Equipment

Storm Chasers uses a variety of vehicles and equipment in their operations:



Ground Vehicles

- 20 [EM-K6 "Kouteki" Grav-Bus](#)
- 30 [General Purpose Off-Road Vehicle](#)
- 25 [Type 30 Light Utility Truck](#)

- 25 [Type 31 Light Utility Truck](#)
- 15 [Type 30 Surface Terrain Vehicle, Civilian Version](#)

Air and Space Vehicles

- 5 [Ge-T2-1E "Kuma" Medevac Shuttle](#)
- 50 [Type 32 Airbike](#)
- 10 [H1 Helicopter](#)
- 3 [Starlyte-C](#)
- 3 [Starbryte-L](#)
- 12 [Skylyte 2A 2A](#)
- 5 [Mocca Cargo Plane](#), three modified for skydiving

Extreme Sports Equipment

For storm diving, tidal wave surfing, mountain climbing, and more, Storm Chasers has state of the art extreme outdoor personal protective equipment for those who wish to get closer than the (relative) safety of a vehicle, such as:

- [Gravity Manipulation Flight Suit](#)
- [Adrenaline Utility Gear](#)
- [Pellis Intelligent Survival Suit](#)
- [Extreme class Hover Board](#)

OOO Notes

[Yuuki](#) created this article on 2020/01/23 15:49.

- Photos found on [Unsplash](#), Public Domain Images.
- Custom [Skylyte/T11 Tanuki](#) by [Kai](#).

Approved by [Syaoran](#) on 2/8/2020

From:

<https://wiki.stararmy.com/> - **STAR ARMY**

Permanent link:

https://wiki.stararmy.com/doku.php?id=corp:yugumo_corporation:storm_chasers

Last update: **2023/12/21 00:58**

