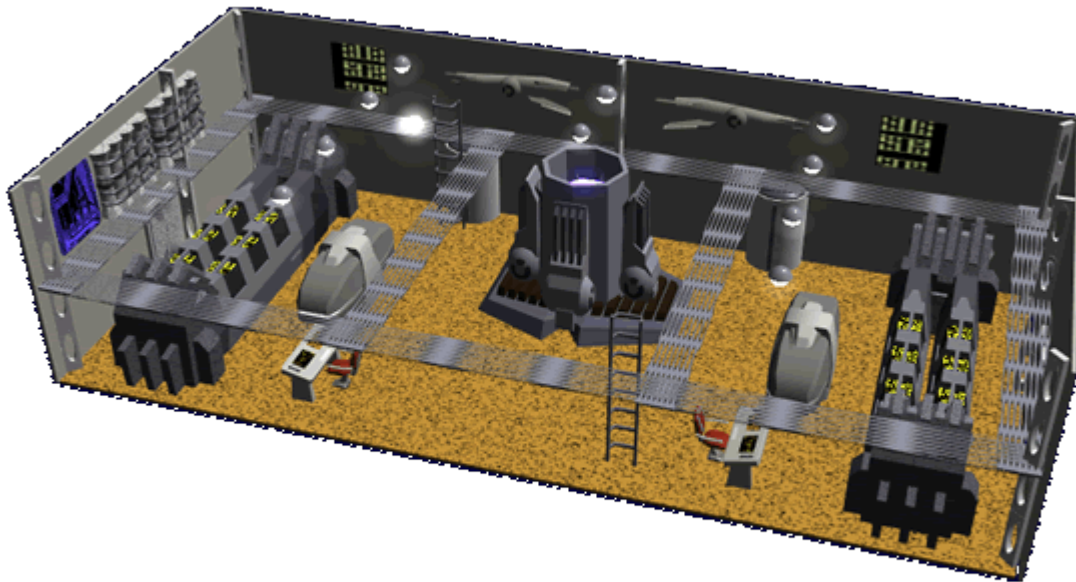


# Nyora'a Ruo'sa (Engineering)

This is the description of the standard engineering space aboard [Poku Saeruo Degonjo Tini Poku \(Clan Ships\)](#)



The room is two decks high and accessed through [Anomu Wunyte \(Security Door\)](#)s. on both decks. It has two [Makoa Kâbo'ka \(Work Console\)](#)s with [Buvoli Kâbo'ka \(Work Chair\)](#)s. Hull braces composed of [Mâqirây \(Bound Metal\)](#) protrude from the side [Anoi \(Walls\)](#). There are [Tyo'te Wuny'ta \(Fire Suppression\)](#) ports and standard [Ibâ'te \(Lighting\)](#) in the ceiling.

The dominant feature of the room is the [Movi Geanme Tyokanorjopa \(Quantum Foam Reactor\)](#), literally the heart of the ship. Along the sides of the room in line with the ship's axis are the [Tinvyma Movidoanor \(Tunnel Drive\)](#) components. Additionally there are two [Âmanus Tyokanorjopa \(Anti-Hydrogen Reactor\)](#) for tactical power.

There are catwalks and ladders that allow movement between the two levels. Along the rear wall there are [Ânamusme Wunyasa \(Damage Station\)](#) for storing parts and equipment.

Last  
update: 2023/12/21 05:25 faction:hidden\_sun\_clan:ships:compartments:engineering [https://wiki.stararmy.com/doku.php?id=faction:hidden\\_sun\\_clan:ships:compartments:engineering](https://wiki.stararmy.com/doku.php?id=faction:hidden_sun_clan:ships:compartments:engineering)

---

From:  
<https://wiki.stararmy.com/> - **STAR ARMY**

Permanent link:  
[https://wiki.stararmy.com/doku.php?id=faction:hidden\\_sun\\_clan:ships:compartments:engineering](https://wiki.stararmy.com/doku.php?id=faction:hidden_sun_clan:ships:compartments:engineering)

Last update: **2023/12/21 05:25**

