

# HS-SE1-1A Ismâo'a (Searcher) - Class Ship

The Ismâo'a (*Searcher*) class is the basic scout ship used by [Poku Saeruo Degonjo](#), this design has been in use since 724CY ([YE 15](#)).

## About the Ismâo'a class

The *Ismâo'a* design is the latest class of scout ship used by the [Poku Saeruo Degonjo](#). All of the older scout ships were either upgraded to the *Ismâo'a*-class or scrapped and recycled. The primary mission of these vessels is to locate and identify resources for the clan. Their secondary mission is exploration/recon. The interior is divided between crew needs and science labs.

*Ismâo'a* pronounced ěsmāō-ă

## Appearance

The *Ismâo'a* is based on a rounded rectangle making it a compact sleek design. The hull is painted in the standard yellow-green scheme. Four [Tinvymai Tyokame \(Plasma Drives\)](#) that provide propulsion for STL travel are seen on the winglets. Bay doors can be seen on the rear for support craft. The hull is standard [Poku Saeruo Degonjo](#) colored and features the [Poku Afirmu \(Clan Crest\)](#) on top. There are six [Sumanâ-a Rotyka \(Fusion Cannon\)](#) mounted on the ship. There is a sensor module mounted ventrally and dorsally, and there are four landing gear visible on the bottom.



## History

The *Ismão'a* traces its design concept history back to 26 CY and the start of construction on the [Sotâka Ruomâqi \(World Station\)](#). Those ships were designed to explore star systems and search for resources that the [Poku Saeruo Degonjo](#) required. The ships had sensors and equipment for gathering samples and evaluating them.

The *Ismão'a* expanded the role of the ship to include that of science vessel, at the sacrifice of carrying capacity. One way this was done was with the inclusion of the Surveyor. *Ismão'a* was designed to be able to work alone or in small groups. This new paradigm makes the ship idea for the clan.

## Statistical Data



## General

- Class: *Ismão'a*-class (Searcher)
- Nomenclature: HS-SE1-1A
- Type: Scout/Science
- Designers: [Otâmovi Wiy Jael \(Silver Moon Sect\)](#)
- Manufacturer: [Otâmovi Wiy Jael \(Silver Moon Sect\)](#) on [Poku Movi Vamâqi \(Clan Void Berth\)](#)
  - Cost: 600,000 [Odawina \(OW\)](#) Gold

## Crew and Accommodations

- Crew: 10
  - Passengers: 12
- Maximum Capacity: 22 There are accommodations for personnel
  - Emergency Capacity: 36 people can fit aboard in an emergency, but the ship would be extremely cramped.

### Sample Crew=

The Wise Bear is a Searcher vessel. Some of its crew, and their duty positions, are described in [this](#) article.

## Dimensions

- Length: 54 meters ( 177.12 feet)
  - Width (Overall): 34 meters ( 111.52 feet)
  - Width (Fuselage): 20 meters ( 65.6 feet)
- Height: 11 meters ( 36.08 feet)
- Decks: 2 (4 meters each)

## Propulsion and Range

### Speeds

The Ismão'a is an agile vessel.

- Atmospheric: 2,664 mph (4,287 kmph), 3,806 mph (6,125 kmph)
- Water: 100 kph (using [Heim Force Generator](#))
- [Tinvymai Tyokame \(Plasma Drives\)](#)
- Class 3C Maximum speed .35c (~104,927 kilometers per second) (~65,198 miles per second)
- [Tinvyma Movidoanor \(Tunnel Drive\)](#)
- Class D (Charge time: 30 min Mouth: 300 meters Distance: 15 LY)

## Durability and Maintenance

Service Lifespan: Estimated 20 years of constant use, possibly longer with refits.

Refit Cycle: Routine updates are done when returned to [Degonjo Saeruo \(Hidden Sun System\)](#) by the [Otâmovi Wiy Jael \(Silver Moon Sect\)](#) at the [Poku Movi Vamâqi \(Clan Void Berth\)](#)

## Damage Capacity

See [Damage Rating \(Version 3\)](#) for an explanation of the damage system.

- Hull: 10 Starship
- Shields: 6 (Threshold 1)

## Inside the Ismâo'a



### Airlock

The *Ismâo'a* has two [Niu'te Ruo'sa \(Airlock\)](#)s on the port side, one on each deck. An EVA locker is contained in each.

### Bridge

The *Ismâo'a* features a [Jyaon Ruo'sa Sa \(Small Bridge\)](#) for control of the ship, located on the upper deck.

### Computer Room

The *Ismâo'a* features a [Jodau Ruo'sa \(Brain Room\)](#) located behind the [Jyaon Ruo'sa Sa \(Small Bridge\)](#).

### Engineering

The has a standard [Nyora'a Ruo'sa \(Engineering\)](#) that spans both decks of the ship. It is next to the vehicle area.

### Environmental Room

The *Ismâo'a* has its [Damira Ruo'sa \(Environmental Room\)](#) room on the lower deck near the lower engineering.

## Fuel Storage

The *Ismão'a* has a [Wunyli Gianaka \(Fuel Storage\)](#) room. The tanks hold enough fuel to resupply the reactors four times. This was deemed sufficient for a non-warship. It is located on the lower deck next to engineering.

## Landing Gear Room

The *Ismão'a* has four rooms that house the equipment for deploying and retracting the landing gear. These are located on the lower deck.

## Laboratories

The *Ismão'a* has three labs located on the lower deck. Each has the ability to be isolated from the ship's primary [Damira Ruosa \(Environmental Room\)](#). This isolation is used anytime a lab is working new samples to avoid contamination.

- Planetary - this lab features equipment for studying the biology, botany, geology, meteorology of a world.
- Stellar - this lab features equipment for performing detailed analysis of the objects in a system, eg: moons, comets.
- Technology - this lab features equipment for analysis of technology used on a world, this includes, metallurgy, chemistry, and other aspects.

## Life Support

The *Ismão'a* has a standard [Damira Ruosa \(Environmental Room\)](#) located on the lower deck.

## Medlab

The *Ismão'a* has a small [Wapoin Rou'sa \(Medical Room\)](#). It is located on the lower deck near the laboratories.

## Passageways

The *Ismão'a* uses [Kâurikâ Goa \(Horizontal Corridors\)](#) and [Kâurâdor Goa \(Vertical Passages\)](#). These passageways run through the decks of the ship vertically as well as horizontally.

There are a number of [Lekaokâur \(Crawl way\)](#) used by the crew for maintenance.

## Temple

The *Ismâo'a* has a small [Sîama Ruo'sa \(Divine Room\)](#) for use by the crew. It located on the upper deck on the port side. This small room has no door.

## Shield Control

The *Ismâo'a* features a [Anoka Ruo'sa \(Shield Room\)](#) located on the starboard side of the upper deck.

## Quarters

The *Ismâo'a* has ten [Âvona Uospa'te Ruo'sa \(Two Person Room\)](#) for the crew, and two [Ta'a Uospa'te Ruo'sa \(Leader Room\)](#) with [Fofinor Ta'a \(Leader Bath\)](#) for the leaders.

There are two [Fofinor Abuka \(Communal Bath\)](#) for use by the general crew and passengers. There are four [Fofinor Hapu \(Hand Baths\)](#) provided for crew use.

## Water Processing

The *Ismâo'a* features a [Kya Norjopa Ruo'sa \(Water Processing Room\)](#) located on the lower deck.

## Dining Hall

The *Ismâo'a* has a dining area located in the bow of the upper deck. It is large enough to feed the entire ship compliment together. Adjacent to the dining hall is the galley where food is prepared.

## Galley

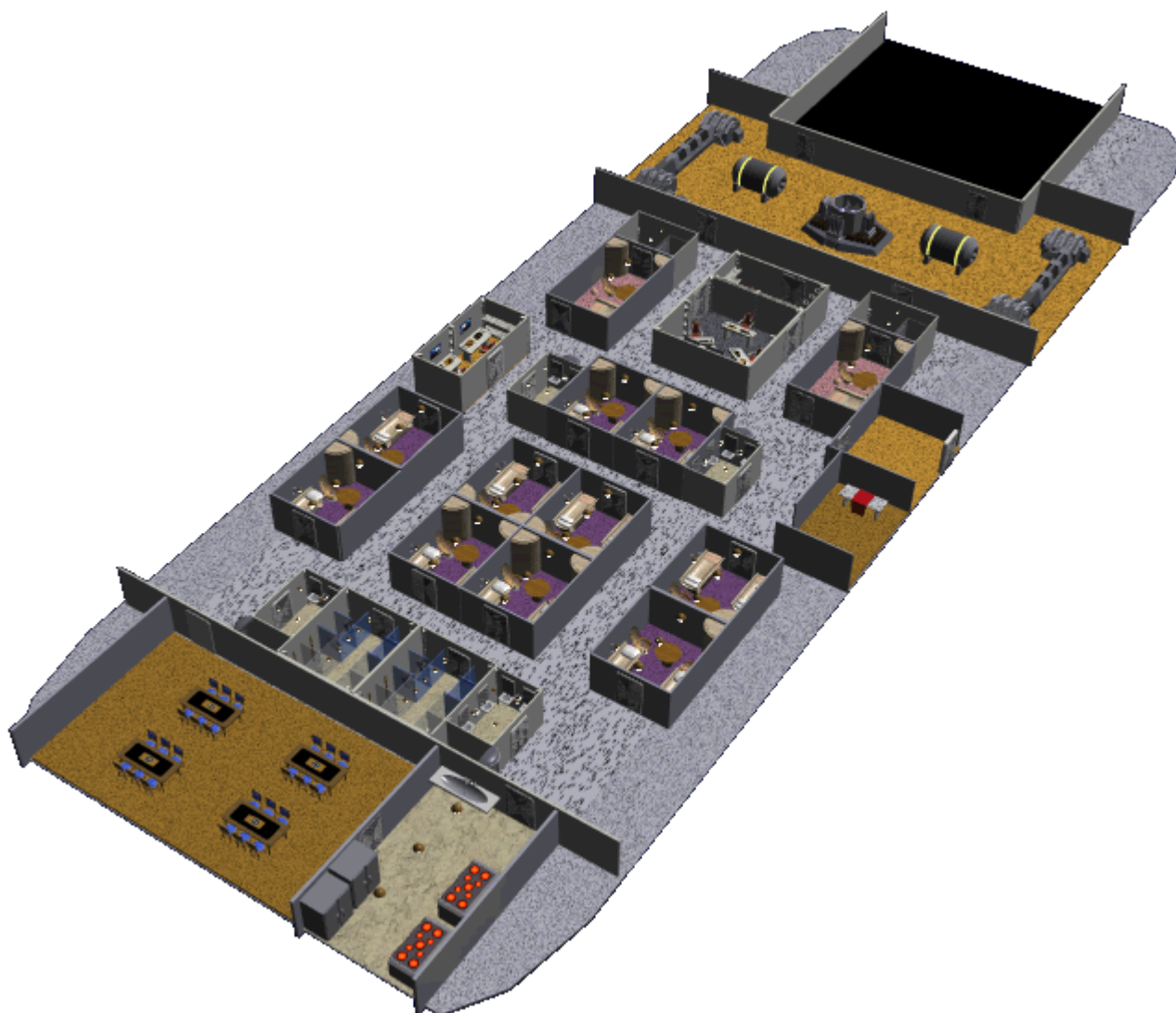
The [Giana Ruo'sa \(Galley\)](#) is where meals are prepared.

## Vehicle Bay

Located in the aft of the *Ismâo'a* is the two deck tall area for storing and maintaining small craft and ground vehicles. Dimensions: 12m x 12m x 5m

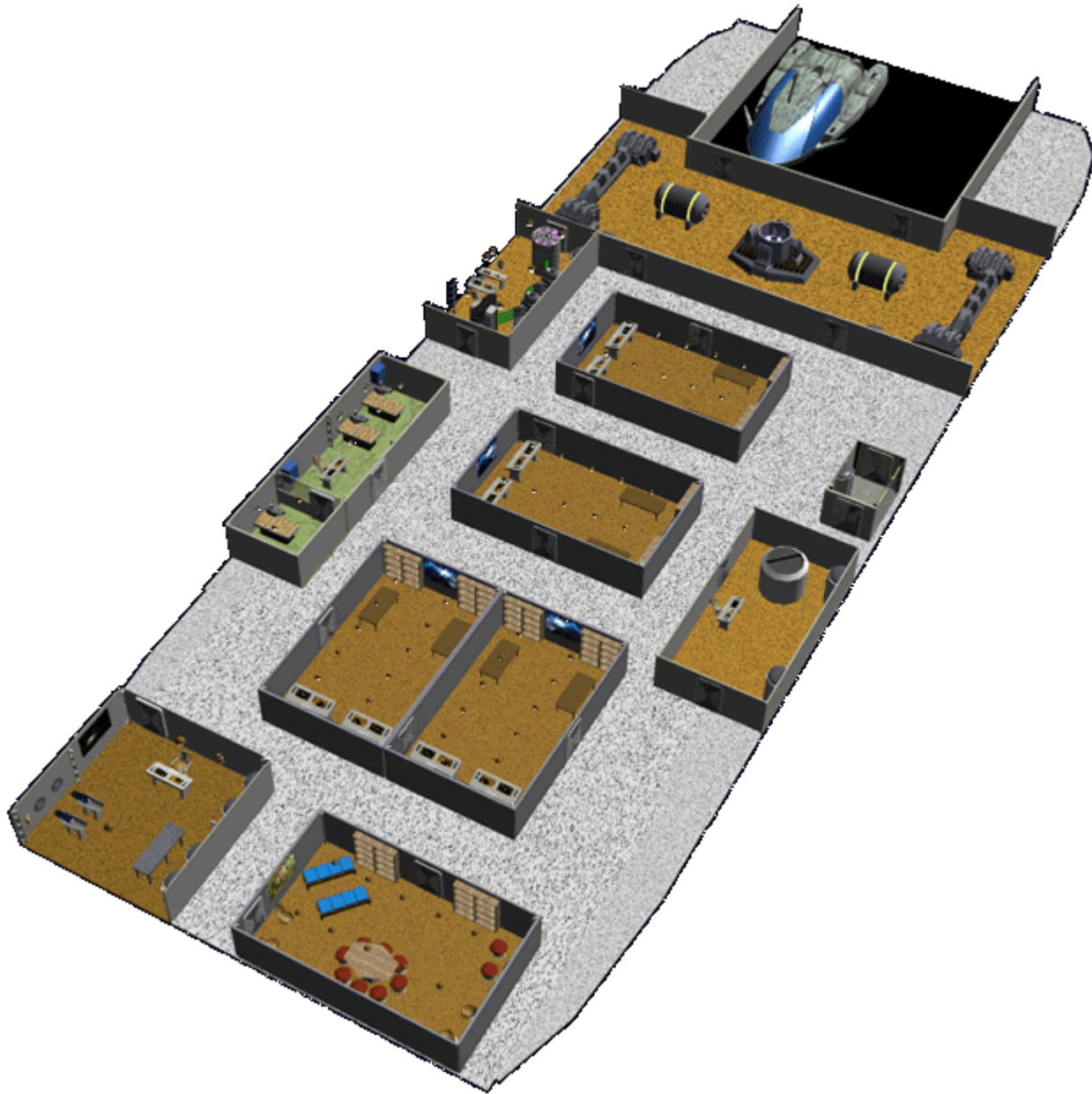
## Deck View

## Deck 1 Upper

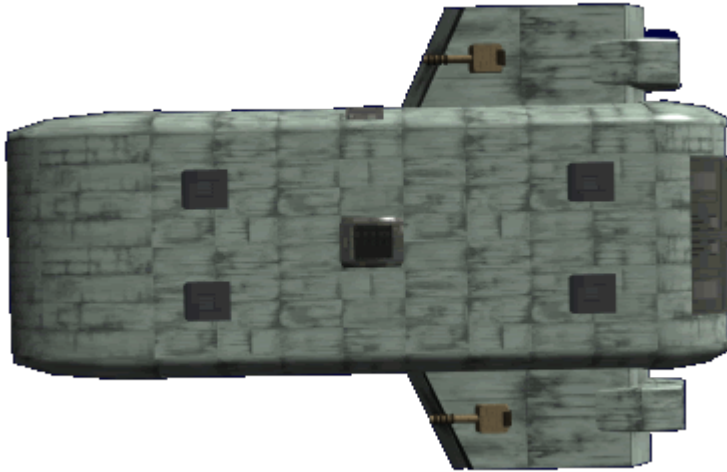


## Deck 2 Lower









## Systems

### Hull

The *Ismâo'a* has a one meter hull that is constructed on a [Mâqirây \(Bound Metal\)](#) frame, covered in [Saemâqi \(Star Metal\)](#) plating. On top of the hull is a layer of [Qotim Anoka'ano Anomu'te \(Ablative Armor Plating\)](#).

### Computer

Unlike the warships of the Hidden Sun Clan, the *Ismâo'a* uses a [Jodau Yoqajo \(Integrated Brain\)](#) for its primary computer system. Many sub-systems and stations use [Iginâ Jodau'ta Fiqorka \(Neuron Processor Module\)](#) for additional computational power.

### Communications

The *Ismâo'a* is equipped with the standard [Ta'te Goly Norjopa \(Far Talking Systems\)](#).


### Sensors

The *Ismâo'a* has the complete set of [Tinsae Mâbor'a \(Starship Sensors\)](#).

- [HS-SS1-E1100 - Quantum Flux Detector](#)
- [HS-SS1-E1101 - Subspace Sensors](#)
- [HS-SS1-E1102 - Gravimetric Scanner](#)

- [HS-SS1-E1103 - Imaging Cluster](#)
- [HS-SS1-E1104 - Ranging](#)
- [HS-SS1-E1105 - Targeting RADAR](#)

## HS-SS1-E1501 Ground Penetrating Radar

The *Ismâo'a* is also equipped with a  [ground penetrating radar](#) that can be used to image through rock, soil, ice, fresh water. It can detect objects, changes in material, and voids and cracks. Range is 10 kilometer. Located in Ventral only.

## Shields

The *Ismâo'a* has the following defensive systems.

- [HS-SS1-E739/03 Anoka Degon'te \(Stealth Shield\)](#)
- [HS-SS1-E739/00 Anoka Udano \(Gravity Shield\)](#)
- [Qotim Anoka'ano Anomu'te \(Ablative Armor Plating\)](#)

## Landing Gear

The *Ismâo'a* is equipped with four internally mounted [Ikâ'te Bapa \(Landing Foot\)](#). These are used when the ship lands on a planet or in a ship bay for loading.

## Life Support

The *Ismâo'a* has all of the standard [Poku Saeruo Degonjo Damira Norjopa \(Environmental Systems\)](#).

## Lighting

The *Ismâo'a* has standard [Ibâ'te \(Lighting\)](#) used by the [Poku Saeruo Degonjo](#).

## Power

### Primary Power

The *Ismâo'a* uses a [Movi Geanme Tyokanorjopa \(Quantum Foam Reactor\)](#) to power primary system. It is tied to a [Gean Norjopa \(Generator\)](#).

## Secondary Power

The *Ismão'a* uses a pair of *Sumanâ-a Tyokanorjopa (Fusion Reactors)* to provide backup power, each has its own *Gean Norjopa (Generator)*

## Tactical Power

The *Ismão'a* has a number of *Âmanus Tyokanorjopa (Anti-Hydrogen Reactor)* to provide power to tactical systems, each has its own *Gean Norjopa (Generator)*

## Emergency Systems

- *Tyo'te Wuny'ta (Fire Suppression)*
- *Ânamusme Wunyasa (Damage Station)*
- *Uosme Wunyasa (Life Station)*

## Weaponry

The *Ismão'a* is armed primarily for defensive purposes.

- 6 *Sumanâ-a Rotyka (Fusion Cannon)*

## Equipment

- 6 *HS-AD2-1a Kyntaqo (Surveyor)*

From:

<https://wiki.stararmy.com/> - **STAR ARMY**

Permanent link:

[https://wiki.stararmy.com/doku.php?id=faction:hidden\\_sun\\_clan:ships:hs\\_se1\\_1a](https://wiki.stararmy.com/doku.php?id=faction:hidden_sun_clan:ships:hs_se1_1a)

Last update: **2024/04/01 10:46**

