

HS-SS2-1a Ytaqo'a (Gatherer) - Class Ship

The Ytaqo'a (*Gatherer*) class is the main cargo craft of the [Poku Saeruo Degonjo](#), this design has been in use since 720CY ([YE 11](#)). The vessel is also used in resource collecting operations, and is associated with the [occupation](#) of [Ytaqo'a \(Gatherer\)](#) .

History

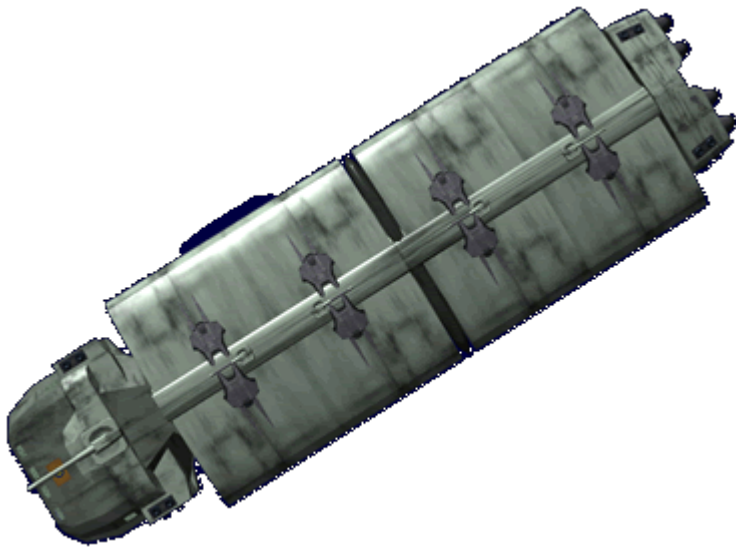
The *Yataqo'a* design is fundamentally unchanged since the time before the [Norka \(The Exodus\)](#), with only minor improvements newer technologies developed. The current design has been in use since 720 CY ([YE 01](#)). The original *Ytaqo'ai (Gatherers)* were unarmed. Life in the new Kikyo sector necessitated the addition of defense weaponry.



Description

The *Ytaqo'a* has a large boxy design, given its role as a large cargo ship. Four plasma drives that provide propulsion for STL travel are seen by the aft of the ship. The clamping mechanisms for the cargo modules can be seen running along the ventral and dorsal lines. Located by each clamp is a [Akko Rotysa \(Coil Gun\)](#). Six [Tomin-anoi \(Windows\)](#) can be seen on the upper half of the forward section. The *Ytaqo'a* is almost always painted in the traditional clan scheme.

The ship has four large storage bays that can be removed. These bays may be dropped at multiple resource collection sites, or they may be dropped in various places back at the ship's return destination for easier unloading. The clamping mechanisms grab and release these bays.



Statistical Data

General

- Class: *Ytaqo'a-class (Gatherer)*
- Nomenclature: HS-SS2-1a
- Type: Cargo
- Designers: *Otâmovi Wiy Jael (Silver Moon Sect)*
- Manufacturer: *Otâmovi Wiy Jael (Silver Moon Sect)* on *Poku Movi Vamâqi (Clan Void Berth)*
 - Cost: 90,000 *Odawina (OW)* Gold

Crew and Accommodations

- Crew: 20
 - Passengers: 0
- Maximum Capacity: There are accommodations for 20 personnel
 - Emergency Capacity: 40 people can fit aboard in an emergency, but the ship would be extremely cramped.

Dimensions

- Length: 183 meters (600.24 feet)
- Width: 56 meters (183.68 feet)
- Height: 20 meters (65.6 feet)
- Decks: 3 (4 meters each)

Propulsion and Range

Speeds

The *Ytaqo'a* is an agile vessel.

- Atmospheric: 6 Mach
- Water: 100 kph (using [Heim Gravity Generators](#))
- [Tinvymai Tyokame \(Plasma Drives\)](#)
- Class 3B Maximum speed .25c (~74,948 kilometers per second) (~46,570 miles per second)
- [Tinvyma Movidoanor \(Tunnel Drive\)](#)
- Class D (Charge time: 30 min Mouth: 300 meters Distance: 15 LY)

Durability and Maintenance

Service Lifespan: Estimated 20 years of constant use, possibly longer with refits.

Refit Cycle: Routine updates are done when returned to [Degonjo Saeruo \(Hidden Sun System\)](#) by the [Otâmovi Wiy Jael \(Silver Moon Sect\)](#) at the [Poku Movi Vamâqi \(Clan Void Berth\)](#)

Damage Capacity

See [Damage Rating \(Version 3\)](#) for an explanation of the damage system.

- Hull: 16
- Shields: 16 (Threshold 2)

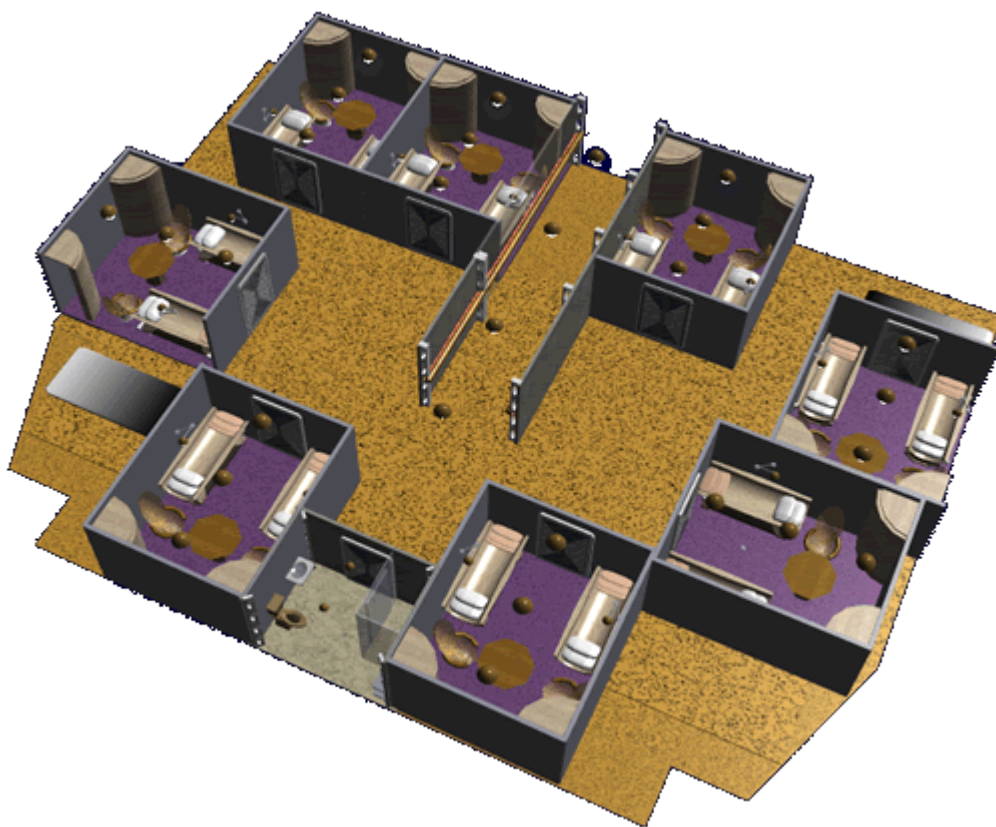
Inside the Ytaqo'a



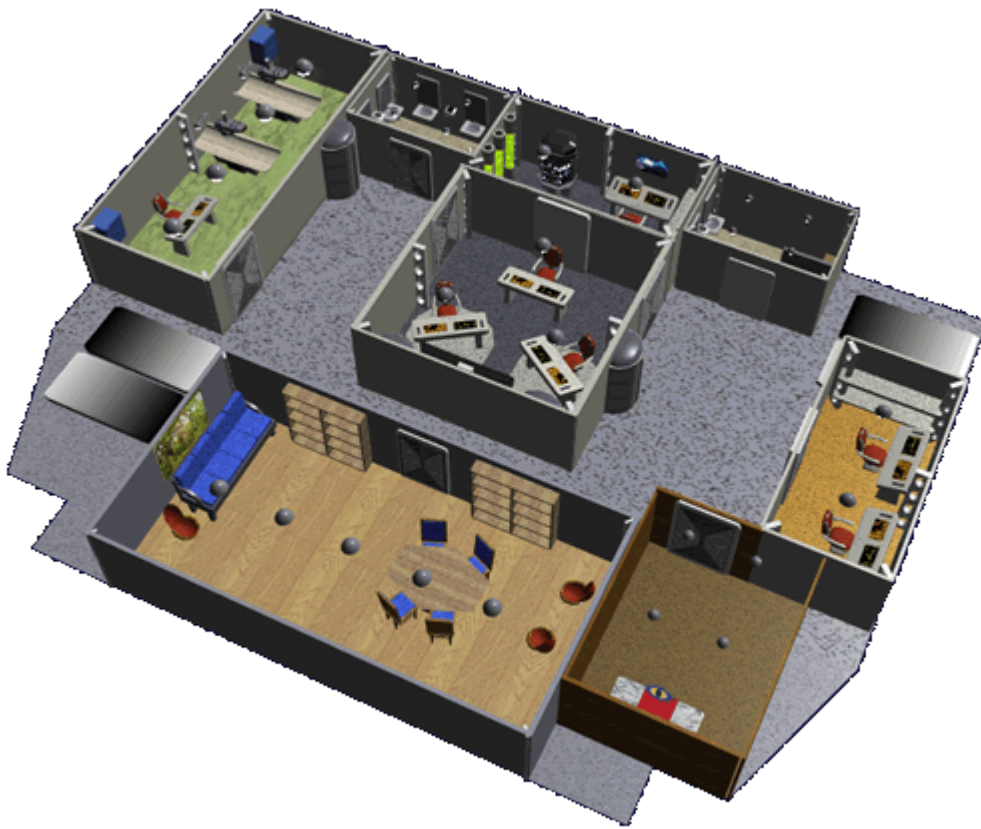
Deck Images

The following images provide references for the decks of the forward section of the ship.

Upper Deck



Mid Deck



Lower Deck



Airlock

The *Ytaqo'a* has two *Niu'te Ruo'sa (Airlock)*s on the lower deck of the forward module. An EVA locker is contained next to each. There is another *Niu'te Ruo'sa (Airlock)* located on the aft section between the engines. This airlock is only used when the drives are not active. Typically for repairs, maintenance and inspections.

Brain Room

The *Ytaqo'a* has a *Jodau Ruo'sa (Brain Room)*.

Bridge

The *Ytaqo'a* has a *Jyaon Ruo'sa Sa (Small Bridge)*.

Cargo Module

There are four of these modules carried by the *Yatqo'a*. There is a 10 meter wide ramp in the bottom that

lowers to allow loading and unloading. The module is divided into two levels with lifts for moving cargo onto the upper levels. There are doors on inside that connect with the ship to allow access to ship.

Dimensions (External)

- Length: 65 m (213.2 ft)
- Height: 10 m (32.8 ft)
- Width: 35 m (114.8 ft)

Divine Room

The *Ytaqo'a* features a small [Siama Ruo'sa \(Divine Room\)](#), sufficient for small gatherings of the faithful.

Engineering

The *Ytaqo'a* has a standard [Nyora'a Ruo'sa \(Engineering\)](#) room in the aft section.

Fuel Storage

The *Ytaqo'a* has a [Wunyli Gianaka \(Fuel Storage\)](#) room. The tanks hold enough fuel to resupply the reactors four times. This was deemed sufficient for a non-warship. It is located on the lower deck next forward of engineering.

Interconnect

This is the long narrow portion of the *Ytaqo'a* that the cargo modules attach to the sides of. It is ten meters wide by seven meters high. Most of this space is structural. A pair of corridors runs the length of this section, with an emergency pressure section halfway which keeps the entire section from decompressing if part is damaged.

Eating Room

The [Gianate Ruo'sa \(Eating Room\)](#) is located on the lower deck. Food is brought from the [Giana Ruo'sa \(Galley\)](#) in the aft section and kept in warmers.

Life Support

The *Ytaqo'a* has a [Damira Ruo'sa \(Environmental Room\)](#). It is located on the lower deck next forward of engineering.

Medical Bay

The Ytaqo'a has a standard [Wapoin Rou'sa \(Medical Room\)](#) without the isolation room.

Mess

The Ytaqo'a has a medium size [Gianate Ruo'sa \(Eating Room\)](#) where the crew gathers for their meals. There is a [Giana Ruo'sa \(Galley\)](#) located next to the mess for food preparation. The scullery is located next to both and has an entrance to both for used items to be brought in for cleaning.

Passageways

The Ytaqo'a uses [Kâurikâ Goa \(Horizontal Corridors\)](#) and [Kâurâdor Goa \(Vertical Passages\)](#). These passageways run through the decks of the ship vertically as well as horizontally.

There are a number of [Lekaokâur \(Crawl way\)](#) used by the crew for maintenance.

Quarters

The Ytaqo'a has ten [Âvona Uospa'te Ruo'sa \(Two Person Room\)](#) for the crew, and two [Ta'a Uospa'te Ruo'sa \(Leader Room\)](#) with [Fofinor Ta'a \(Leader Bath\)](#) for the leaders.

There are two [Fofinor Abuka \(Communal Bath\)](#) for use by the general crew and passengers. There are four [Fofinor Hapu \(Hand Baths\)](#) provided for crew use.

Shield Room

The Ytaqo'a has a single [Anoka Ruo'sa \(Shield Room\)](#) for overseeing the ship's defenses.

Water Processing

The Ytaqo'a has a compact [Kya Norjopa Ruo'sa \(Water Processing Room\)](#) on the lower deck of the forward section that provides clean water for the crew.

Ytaqo'a Systems



Armored Hull

The Ytaqo'a is built on a [Saemâqi \(Star Metal\)](#) frame and is covered in [Mâqirây \(Bound Metal\)](#) plating of .5 meters.

Communications

The Ytaqo'a has the standard [Ta'te Goly Norjopa \(Far Talking Systems\)](#).

Computer

The Ytaqo'a is equipped with a [Jodau Yoqajo \(Integrated Brain\)](#) or [Jodau Sumanâjo \(Synthetic Brain\)](#). Typically ships with more senior crew will have opt for the [Jodau Yoqajo \(Integrated Brain\)](#).

Landing Gear

The Ytaqo'a is equipped with four [Ikâ'te Bapa \(Landing Foot\)](#) externally mounted. These are used when the ship lands on a planet or in a ship bay for loading.

Life Support

The *Ytaqo'a* has the full set of [*Damira Norjopa \(Environmental Systems\)*](#).

Propulsion

The *Ytaqo'a* is outfitted with the following propulsion [*Poku Saeruo Degonjo*](#) developed systems.

STL

The *Ytaqo'a* is equipped with four [*Tinvymai Tyokame \(Plasma Drives\)*](#).

FTL

The *Ytaqo'a* is equipped with a class D [*Tinvyma Movidoanor \(Tunnel Drive\)*](#).

Atmospheric

The *Ytaqo'a* is equipped with [*Heim Gravity Generators*](#) for planetary propulsion.

Maneuvering

The *Ytaqo'a* is equipped with six clusters of [*Gean Vymasa \(Ion Thruster\)*](#) for attitude control and station keeping.

Sensors

The *Ytaqo'a* has the standard [*Tinsae Mâbor'a \(Starship Sensors\)*](#).

Shields

The *Ytaqo'a* has the following defensive screens.

- [*HS-SS1-E739/00 Anoka Udano \(Gravity Shield\)*](#)
- [*HS-SS2-S720/00 Anoka Wotanu'pa \(Defense Shield\)*](#)

Windows

On the *Ytaqo'a* there are six [Tomin-anoi \(Windows\)](#) present on the forward section upper deck. They are most often used while the ship is on planet or in orbit above a world to be harvested. They are in public areas so that all can enjoy them.

Weaponry

The *Ytaqo'a* is armed for its own defense. *It does not count as a warship.*

Damage Rating (Version 3)

- 1 Dorsally mounted [Akko Rotyka \(Coil Cannon\)](#) SDR 3
- 10 [Akko Rotysa \(Coil Gun\)](#) ADR 5/SDR 1

OOC Notes

- Art and article by [Nashoba](#).

From:

<https://wiki.stararmy.com/> - **STAR ARMY**

Permanent link:

https://wiki.stararmy.com/doku.php?id=faction:hidden_sun_clan:ships:hs_ss2_1a

Last update: **2024/03/31 12:27**

