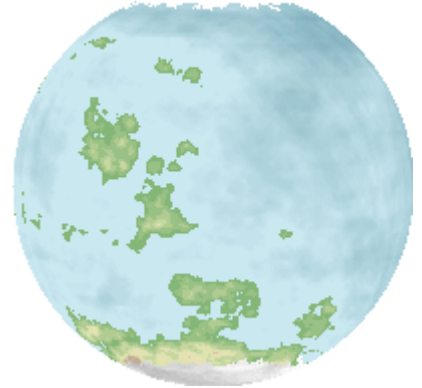
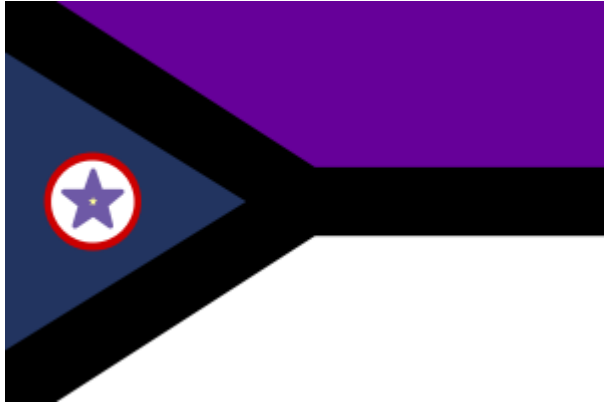


# Jiyuu III

Jiyuu III is the third planet in the [Jiyuu System](#). It is part of the [Yamatai Star Empire](#). It is also the capital planet of the [Motoyoshi Colonial Sector](#).



Jiyuu (自由) means “Freedom” or “Liberty” in [Yamataigo](#) (邪馬台語).

Jiyuu has five 🌕 [moons](#) which are: Azumi<sup>1)</sup>, Amaterasu<sup>2)</sup>, Keina<sup>3)</sup>, Kiku no Umi<sup>4)</sup>, and Nozomi no Umi<sup>5)</sup>.

## History

The Jiyuu System was designated as *M-1* by the [YSS Akuro II](#), the Flagship of the [Fifth Expeditionary Fleet](#) in [YE 29](#). Upon the review of scans from the rest of the [Yugumo Cluster](#), the system was selected to become the Capital System of a new series of Colonies that would secure a new base of operations after the destruction of [Taiie](#) by the [sfrarabla\\_mishhuvurthyar\\_xhrafuklurp](#).

Jiyuu was chosen because of its strategic centrality to other systems in the cluster, making it a potential launching pad for defensive operations in the region. The system is also rich in resources, plenty of planets capable of supporting mining and industrial colonies as well as two inhabitable worlds to support full colonization efforts: [Jiyuu III](#) and [Jiyuu IV](#).

## The First Colony



The first colony in the system was on [Jiyuu III](#), which was called *Tamashii no Jiyuu* (“Soul of Freedom”), in [YE 29](#). Settled by the [Fifth Expeditionary Fleet](#) and the [Motoyoshi Clan](#), it became the home of millions of survivors from [Taiie](#).

## A Brief Independence

In [YE 30](#), the Jiyuu System became the Capital System of the [United Outer Colonies](#), which was intended to be a neutral peacekeeper nation, grounded on a philosophy promoting intergalactic peace through the cooperation of all nations in the known universe. In [YE 33](#), Due to invasion and heavy bombings by the [NMX](#), the Jiyuu System was evacuated by the [Star Army of Yamatai](#).

In [YE 34](#), the system was re-integrated into the [Yamatai Star Empire](#) and placed under the protection of [Tenth Fleet](#).

## A Return to Brilliance



In [YE 34](#), the [Sunflower Corporation](#) began to restore sites on [Jiyuu III](#) and made massive improvements and additions to the infrastructure of the planetary capital of [Tokyo](#).

Then in YE 41, [Ketsurui-Motoyoshi Katsuko](#), the former [Taisho](#) of the [Fifth Expeditionary Fleet](#) and the leader [Motoyoshi Clan](#) returned and placed a massive financial investment into the System. The former [Sunflower Corporation](#) was merged into the [Yugumo Corporation](#) and the [Motoyoshi Clan](#) funded initiatives to boost commercial and industrial activity in the system. [Ketsurui-Motoyoshi Katsuko](#) also made the [System](#) the home of the [First Expeditionary Fleet](#).

Since YE 42, the cultural concept of the [Jiyuuian](#) has faded as the [Motoyoshi Clan](#) pushed their campaigns and agendas through platforms like the [Yugumo Workers Federation](#) which exposed the criminal activities of the Tange Clan and the former [United Outer Colonies](#). After the [Attempted Terrorist Attack at YE 42 Lantern Festival](#), hold out citizens in [UMC Synthetic Bodies](#) rushed to transfer to [Minkan](#) bodies to show respect to the restored [Motoyoshi Clan](#) and reject the agenda of the terrorists.

Further support for the [Yamatai Star Empire](#) came during the end days of the [Kuvexian War](#), as that huge numbers of the planet's [Star Army of Yamatai](#) personnel were deployed with the [First Expeditionary Fleet](#). Crowds gathered to hold vigil for the fleet during the intense [Battle Of Glimmergold](#) and celebrate the following [Victory Day YE 43](#).

## Capital of The Motoyoshi Colonial Sector

In YE 43, Jiyuu was made the capital of the [Motoyoshi Colonial Sector](#) region in the [Yamatai Star Empire](#). For many in rang in a new era, one where the [Motoyoshi Clan](#) led them back to being a proud member world of the Empire. Through initiatives like the [Yugumo Corporation](#) which brought back employment and even attracted other [Corporations](#) to the region, the [Yugumo Workers Federation](#), it brought millions of refugees that had been displaced across the [Kikyo Sector](#) back to their homes and attracted new colonists from other regions hopeful to thrive in the restored economy.



(Flag of the Motoyoshi Colonial Sector)

## Description

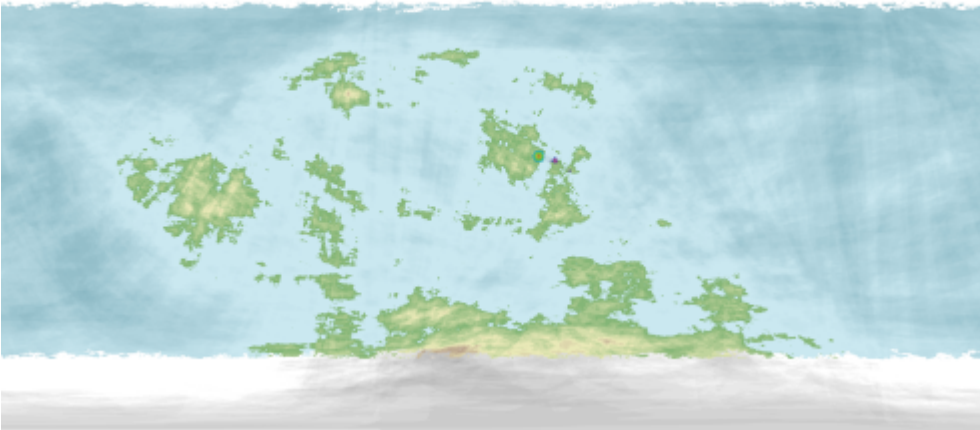
Jiyuu is the third planet in the [Jiyuu System](#). It is a terrestrial planet and a life-supporting world. Jiyuu is covered by only 16% landmass consisting of continents and islands. The remaining surface is 84% 🌐

[water](#), 30% of which is solidified in [ice](#). Jiyuu was selected for colonization because the planet did not require heavy terraforming, rather it nicely fit the profile of a [Yamatai \(Planet\)](#)-like planet.

Jiyuu III (Jiyuu)	
Faction	<a href="#">Yamatai Star Empire</a>
Region	<a href="#">Motoyoshi Colonial Sector</a>
Clan of Influence	<a href="#">Motoyoshi Clan</a>
Governor	<a href="#">Motoyoshi-Ieyasu Tetsuya</a>
Capital City	<a href="#">Tokyo</a>
Population	1.2 Billion ( <a href="#">YE 43</a> census)
Senator	Waiting for Next Election

The Planet

The Capital World of the [Motoyoshi Colonial Sector](#).



Jiyuu is a beautiful tropical world with a lush, diverse and prolific [biosphere](#). The first colonists to come to the planet, mostly survivors from the destruction of [Taiie](#), referred to the planet as a paradise. Scientists from the [Yugumo Corporation](#) completed a biological survey at the end of [YE 42](#); they determined that despite the extreme bombing the planet

received at the end of the [Second Mishhuvurthyar War](#), the planet's ecosystem had fully recovered. They also verified that the projects led by [Sunflower Corporation](#) had successfully cleaned up the radiological damage done to the city of [Tokyo](#).

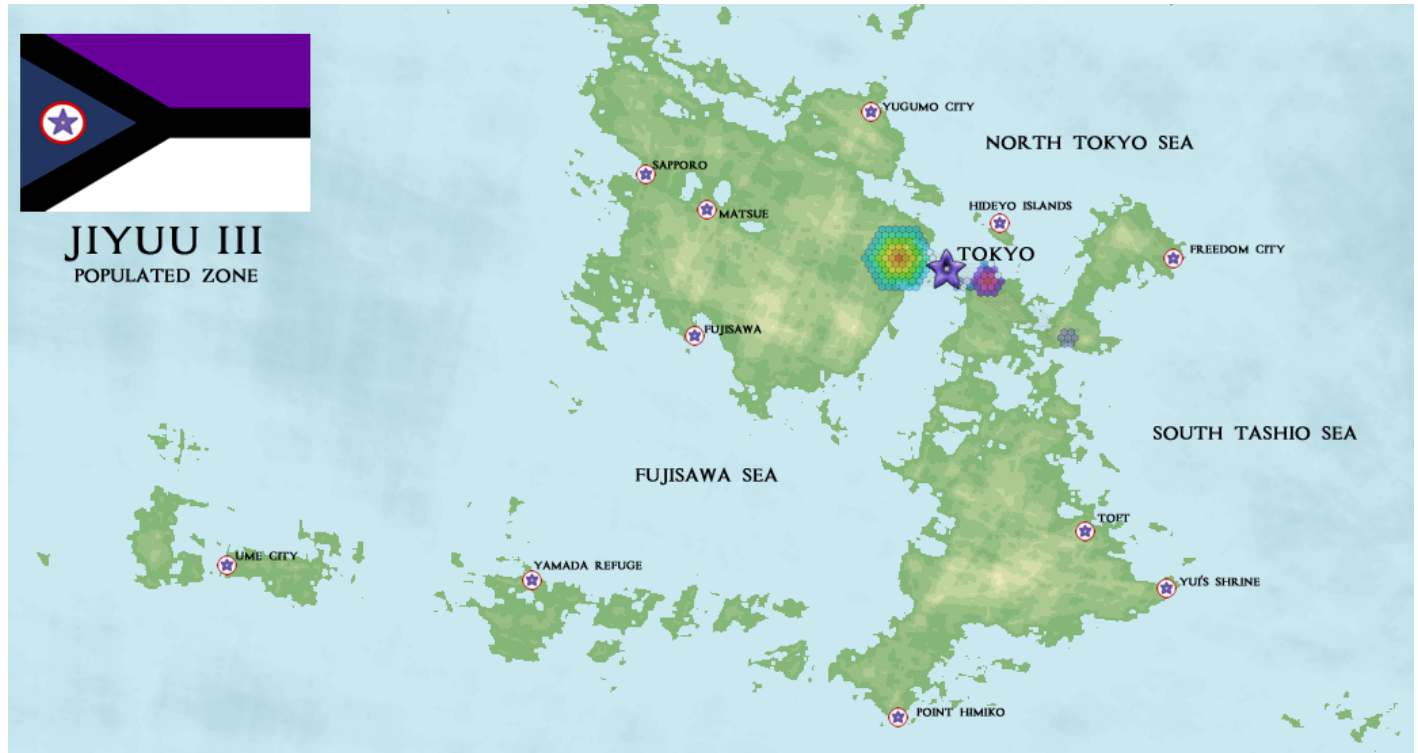
(click to enlarge) The city of [Tokyo](#) can be seen to scale when enlarged.

Flora of Jiyuu III

The [Flora of Jiyuu III](#) is unique and diverse.

# The Colonial Zone

A map of the Jiyuu III Colonial Zone. The Colonial Zone is the populated zone of the planet, in [YE 42](#), when [Ketsurui-Motoyoshi Katsuko](#) returned to Jiyuu, she outlined the region as open for development. The remainder of the planet would remain a large ecological preserve.



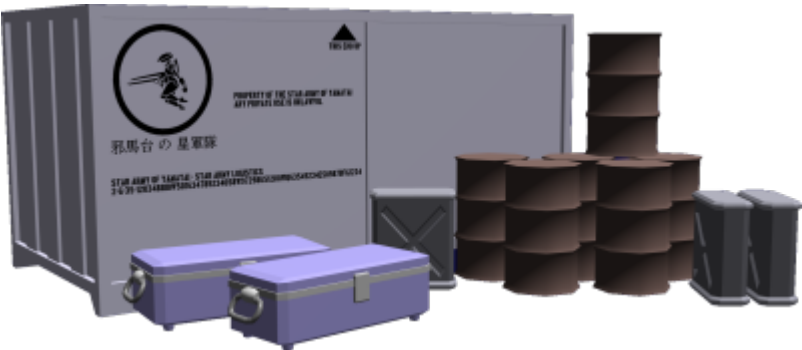
## Major Cities

Cities listed by size.<sup>6)</sup>

1. [Himawari/Atarashi Tokyo](#) - Planetary Capital
2. Hideyo Islands
3. Yugumo City
4. Sapporo
5. Matsue
6. Fujisawa
7. Freedom City
8. Ume City
9. [Yamada Refuge](#)
10. Toft
11. Yui's Shrine
12. Point Himiko


## Jiyuu Fleet Depot


Jiyuu Fleet Depot is a huge [Star Army of Yamatai](#) planetary base in the [Jiyuu System](#). The purpose of the depot is to serve as a far-eastern hub for [Star Army Logistics](#) in the [Motoyoshi Colonial Sector](#).



## Transportation

Jiyuu III is connected by [PAINT](#) to the rest of the [Yamatai Star Empire](#). As of [YE 43](#), [Port Jiyuu](#) is the major transportation HUB in the region. There are [Starports](#) located in all major cities except for Yui's Shrine which is only accessible by train and a private landing zone.

The planet is serviced by  [MagLev](#) trains and all cities have the [Tokyo Transportation Infastructure](#).

 The trains were developed originally for use at [REDACTED](#).

Cruising at 330km/hr during normal operation these trains transport personnel and cargo through the city and to other colonies on the planet. In addition to personnel transport cars, there have been flatbed cars added to the trains to assist with the movement of [Standard Starship Cargo Containers](#) and other cargo. During emergency or combat conditions the speeds of the trains can be increased to 440km/hr. The passenger cars are armored with starship-grade [Durandium Alloy](#).

## People

Jiyuu is the home of 1.2 Billion citizens of the [Yamatai Star Empire](#). The population is a mix of [Minkan](#), [Nekovalkyrja](#), [Lorath](#), [Human](#) and [Nepleslian](#).

## Characters

These [Characters](#) are present on Jiyuu III<sup>7)</sup>

Page	Occupation	Gender	Species
<a href="#">Kuroda no Ginji (黒田の吟二)</a>	Scout	Male	<a href="#">Minkan</a>
<a href="#">Komatsu Elena</a>	Private Investigator	Female	<a href="#">Minkan</a>



Page	Occupation	Gender	Species
<a href="#">Ketsurui-Motoyoshi Katsuko</a>	Fleet Commander	Female	<a href="#">Nekoalkyrja</a>
<a href="#">Kuroda no Ryūsuke (黒田の竜介)</a>	Tea Farmer	Male	<a href="#">Minkan</a>
<a href="#">Motoyoshi Sayuri</a>	Science Officer	Female	<a href="#">Nekoalkyrja</a>

## RP Opportunities

Some Roleplay Ideas.

- Explore or visit [Alien Species Generator](#).
- Develop new locations in roleplay.
- Work for the [Yugumo Corporation](#).
- Join a plot in the [First Expeditionary Fleet](#).

## Local Rumors

Maybe true, maybe not.

- The Tange Clan and terrorists still loyal to [Motoyoshi Kiyoko](#) are still hiding on Jiyuu.
- The [Motoyoshi Clan](#) has a secret undersea colony here.

## OOO Notes

[toshiro](#) made the original page. [andrew](#) updated this article on 2021/01/30 23:21.

- Maps are by [toshiro](#) and [Andrew](#).
- Flag art and Cargo Pile is by [wes](#).
- MCS Flag is by [rawolfe](#).
- Artbreeder art is by [charaa](#) and [Andrew](#).
- DOGA train art is by [Andrew](#).

It was GM approved by [wes](#) (4/21/2018) and NTSE approved by Ametheliana (4/24/2018) here:  
<https://starmy.com/roleplay-forum/index.php?threads/jiyuu-iii-planet-tokyo-city-sunflower-corporation-corp-rebuilding-city.61837/>

The update was approved by [wes](#) in this [thread](#)

Places of the SARPiverse	
Opened/Settled (YE)	<a href="#">YE 29</a>
Place Categories	planet

1)

安純 means “restful and pure” in [Yamataigo](#) (邪馬台語).

2)

天照 means “shining over heaven” in [Yamataigo](#) (邪馬台語).

3)

慶 means “prosperity” and to be “delighted” in [Yamataigo](#) (邪馬台語)

4)

means “Chrysanthemum of the sea” in [Yamataigo](#) (邪馬台語)

5)

means “Hope of the Sea” in [Yamataigo](#) (邪馬台語)

6)

City locations will be submitted separately over time

7)

Struct list will show when someone lists this as a location

From:

<https://wiki.stararmy.com/> - **STAR ARMY**

Permanent link:

[https://wiki.stararmy.com/doku.php?id=planet:jiyuu\\_iii&rev=1666835456](https://wiki.stararmy.com/doku.php?id=planet:jiyuu_iii&rev=1666835456)

Last update: **2023/12/20 16:25**

