

# Fate Bastion

Fate (Unmei) Bastion is one of the [First Expeditionary Fleet Star Army Bases](#) in the [Shugosha System](#), located on [Shugosha I](#). It became active in early [YE 42](#).

## Unit Patch

The unit patch for Fate Bastion.



## About Fate Bastion

Fate Bastion was created in [YE 42](#) as part of the [Shugosha System](#) Defense Plan suggested by [Ketsurui-Motoyoshi Katsuko](#). The base was designed to provide protection to important resource colonies in the [Shugosha System](#) and be within close proximity to the new [Keiyō City](#) Heavy Industrial City. The base uses an existing [Katsuko-Class Colony Installation](#) that has no city interior and a [Star Army Spire, Type 32](#) with a network of [Ke-P3 Series Defense Towers](#).

The Colony installation was abandoned by the [United Outer Colonies](#) in [YE 31](#) and has been cleared of the remains of what was supposed to be the second Namiko Colony. The [Katsuko-Class Colony Installation](#) was then refurbished and augmented by the [First Expeditionary Fleet](#) in [YE 42](#). Due to the toxic atmosphere of [Shugosha I](#) the integrity of the dome was vitally important to the maintenance of a [Yamatai \(Planet\)](#)-like environment.

It is located, 15 km away from [Keiyō City](#) city center, which is halfway between [Keiyō City](#) and the New Namiko Colony. It also has its own [Frontier Starport](#).

# Transportation

There are several methods of transportation to ensure the smooth movement of personnel and goods through Fate Bastion.

## MagLev

Fate Bastion is serviced by 🚆 [MagLev](#) trains connected to [Keiyō City](#).

❌ The trains were developed originally for use at [REDACTED](#).

Cruising at 330km/hr during normal operation these trains transport personnel and cargo through the city and to other colonies on the planet. In addition to personnel transport cars, there have been flatbed cars added to the trains to assist with the movement of [Standard Starship Cargo Containers](#) and other cargo. During emergency or combat conditions the speeds of the trains can be increased to 440km/hr.

The passenger cars are armored with starship-grade [Durandium Alloy](#).

## Lifts

[Standard Lifts](#) provide vertical movement in most structures.

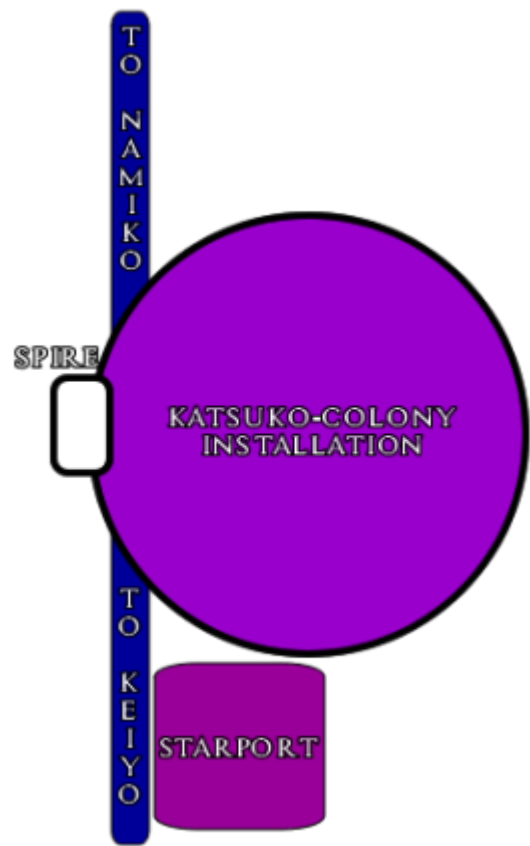
## Underground Connections

Fate Bastion has an underground road, rail, and tunnel connection to [Keiyō City's Tokyo-like Infastructure](#).

# Inside Fate Bastion

## Layouts

The base consists of three major areas.



1. The modified [Katsuko-Class Colony Installation](#). (Interior Structures)
2. The [Star Army Spire, Type 32](#). (Exterior Structure)
3. The [Frontier Starport](#). (Exterior Structure)

| Fate Bastion                                      |  |
|---|--|
| <a href="#">Katsuko-Class Colony Installation</a> | Training and Learning Facilities, Testing Range, Accomodations and Services, Recreation Areas  |
| <a href="#">Star Army Spire, Type 32</a>          | Base Command and Administration, <a href="#">Star Army Rikugun</a> Command and Housing, <a href="#">Cloning Facilities</a> , Vehicle Storage |
| <a href="#">Frontier Starport</a>                 | <a href="#">PAINT</a> Facilities, <a href="#">Star Army of Yamatai</a> Landing Zones and Facilities, Flight Control Tower                    |

The secondary extensions of the base are located underground.

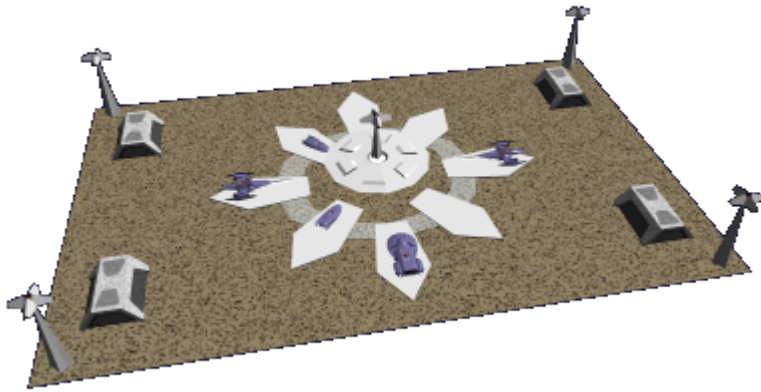
| Fate Bastion Underground   |
|--|
| Emergency <a href="#">H Bunkers</a> , <a href="#">Star Army of Yamatai</a> Weapons Depot |
| Transportation connections to <a href="#">Keiyō City</a> and Namiko Colony               |

## Fate Bastion

The second of the Bastion [Star Army Bases](#) for the [First Expeditionary Fleet](#).

## Fate Starport

Fate Starport is a [Frontier Starport](#).



This starport serves as the primary connection to the rest of the [Yamatai Star Empire](#), [Star Army of Yamatai](#) and [Star Army Bases](#) through [PAINT](#). The Starport is protected by atmospheric graviton field to protect personnel and facilities from exposure to the planet's toxic atmosphere. It includes several facilities:

- [PAINT](#) terminals, hangars and tarmac areas.
- [Star Army of Yamatai](#) landing zone, hangars and service facilities.
- [Corona Heavy Gunship](#), [Star Army Variant](#) hangars and staging areas for the use of [Star Army Rikugun](#).
- Flight Control Tower.
- Standard arrangement of [Ke-P3 Series Defense Towers](#) connected to the defense grid controlled by Fate Bastion.
- and other features standard to the [Frontier Starport](#).

## Under The Dome

Fate Bastion has most of its facilities located under the protective dome of the [Katsuko-Class Colony Installation](#).

## Training Base and War College Campus

A cluster of buildings and skyscrapers devoted to the training of enlisted and officers in the various [Occupations in the Star Army of Yamatai](#)

The campus includes:

- 3 [Star Army Training Administration](#) Division Command Buildings
- 6 [Kyoto War College](#) Facilities
- 6 Military Skyscrapers with [Microapartments](#) to house students and residents
- Parade Grounds

## Co-Op HUB

Utilized by the entire Fate Bastion base community, it has:

- [Alterations and Embroidery Shop](#)
- [Star Army Barber Shop](#)
- Brig
- [\[\[items:drinks:coffee shop\]\]](#)
- [Kikyo Pie Company](#)
- Tachi's
- Kitchen
- Motor Pool
- [Star Army Clothing Store](#)
- [Star Army Dojo](#)
- [Standard Star Army Post Office](#)
- [Trinary Star Shipping](#) center

The Co-Op has several [H Bunker](#) for the evacuation of ground facilities during a crisis.

## On-Base Food and Drink Options

Options for food and drink on this base.

- [Flavor Of Victory](#) (since [YE 45](#))

## Tokyo Brewing Company BrewPub

This [Star Army Bases](#) has an on-site vetted employee location of the [Tokyo Brewing Company](#). It is a BrewPub location and its current menu is the [Tokyo Brewing Company BrewPub Menu \(YE 43\)](#). The location opened in [YE 43](#).



## Kikyo Pie Company

This [Star Army Bases](#) has an on-site vetted employee location of the [Kikyo Pie Company](#). They offer delivery anywhere on base.

## Recreation Facilities

Fate Bastion has several recreation facilities, which include:

- [Star Army Standard Fitness Center](#)
- [🏊 Olympic-Size Swimming Pool](#) (1 Indoor, 1 Outdoor)

-  [Tennis Courts](#)
-  [Volleyball Courts](#)
- [Aerial Football](#) - Under Construction, Expected to Join League in [YE 43](#)

## Lake Keiyo

Lake Keiyō is an artificial lake that has been added to Fate Bastion. It is surrounded by a sand beach and greenspace which serves as a place for picnic areas and elegant gardens. Students from the training and war college campus often use this area for recreational activities like BBQs, sports, swimming, sport fishing, and romantic retreats.

## Fate Test Range

A [Star Army of Yamatai](#) test range that is located in the far west section of the [Katsuko-Class Colony Installation](#). It is used to test and train soldiers on the use of various ground-based weapons, power armor and other vehicles.

## The Spire

The [Star Army Spire, Type 32](#) serves as the base Command Structure as well as the center of the Planetary Defense Grid.

## Command and Administration



The upper floors of the [Star Army Spire, Type 32](#) are devoted to the command and administration of the entire base. It is equipped with a [Command Center](#) similar to that found on the [Zodiac-Class Star Fortress](#).

Individual offices, cubical departmental offices, and conference rooms are scattered throughout the upper floors. A [Star Army Flag War room](#) is kept operational and ready for use.

This section also has:

- [Standard Star Army Armory](#)
- [Standard Star Army Post Office](#)
- [Standard Star Army Galley](#)
- [Standard Star Army Dining Hall](#)
- [Star Army Dojo](#)
- [Standard Star Army Toilet](#)

In a secure chamber, the base [PANTheon Integrated Electronics System \(PANT-IES\)](#) is in this section.

Transportation between local decks is done by [Standard Lifts](#).

## Training Facility

The training facilities include multiple simulators designed to train soldiers on the use of everything from power armor to the different classes of [Star Army of Yamatai](#) vessels. Extensive [Star Army Rikugun](#) training areas have also been constructed in this section.

Other included areas:

- [Star Army Rikugun](#) Command and Control
- [Star Army Rikugun](#) Training Areas
- [Star Army Standard Fitness Center](#)
- Volumetric and VR Training Facilities

## Rikugun Barracks

The [Star Army Rikugun](#) barracks is a city within a city, [Barracks Segments](#) line the decks along with [Standard Star Army Galley](#), [Standard Star Army Dining Hall](#), and all the other facilities required to house, feed and entertain soldiers.

A [Star Army Standard Hospital Center](#) is included in this section.

## Mass Cloning Facilities

Fate Bastion is an important creation center for new [Nekovalkyrja](#) and [Minkan](#), on a smaller scale than [Nataria](#). A [Personnel Synthesis Facility](#) and [Mass Cloning Facilities](#) are activated on demand, such as when [Taisho Yui Ordered the Creation of more Nekovalkyrja and Minkans](#) during the [Kuvexian War](#).

# Systems

Notable Systems of Fate Bastion.

## Armored Base Structures

Armored base structures are built similar to [Star Army of Yamatai](#) vessels, they use [Xiulurium](#)-coated [Zesuaium](#) and [Yamataium](#). The windows are made of transparent [Zesuaium](#). All interior passageways and rooms are surrounded by [Yarvex](#) sheeting.

## Power Plants

Extensive geothermal wells have been dug to take advantage of the raw internal power of the near-star

planet, [Shugosha I](#). Using geothermal sources rather than [Aether](#) made the facilities have a lower aether profile on test scans from the immediate [Shugosha System](#) and eliminated long-ranged detection beyond the system boundaries.

[Aether](#) generators are kept on the base, in the event the base is detected they can fire up those generators to provide higher power levels to put power into the defense grid.

## Life Support

The Fate Bastion uses [Star Army Standard Life Support Systems](#) to create a well-managed environment to support the population of the base. Water Ice is shipped in from the Torimodosu Belt on freighters and melted down and purified. The new [Nodal Liquid Conduit System](#) also assists with recycling and purification procedures.

## Emergency Systems

The Fate Bastion is equipped with all [Star Army Standard Starship Emergency Systems](#), such as heavy-duty [Forcefield-Nested Isolation Doors](#) to separate sections, compartments or areas of the facility, this includes the train tunnels if required. In addition [Type 41 Blast Shutters](#) have been added in all [Standard Passageways](#).

Similar to all starships [Standard Damage Control Station](#) and [Star Army Fire Suppression System, Type 32](#) have been placed in key locations. Several [Soul Savior Pod](#) are scattered through the Cathedral Facilities of the Nemesis Bastion.

## Integrated Electronics

The Base Structures have been equipped with the following computing and electronics systems:

- [PANTheon Integrated Electronics System \(PANT-IES\)](#) - Spire
- [KAMI](#) - Starport and Katsuko Colony Installation
- [Backup Integrated Electronics System](#) - Backup Systems (All)

These systems include the usual integration with [Star Army Standard Communications Array](#), [Psionic Signal Controller](#) and Sensor Systems.

## The Planetary Defense Grid

Fate Bastion serves as the center of the Planetary Defense Grid for [Shugosha I](#). The [Shugosha System](#) is regularly patrolled by the [First Expeditionary Fleet](#).

## Ground Grid

The ground-based grid consists of the following sections.

1. Fate Bastion (Main Grid)
  - 1 [Star Army Spire, Type 32](#)
  - 50 [Ke-P3 Series Defense Towers](#)
2. [Keiyō City](#) Grid
  - 30 [Ke-P3 Series Defense Towers](#)
3. Namiko Grid
  - 30 [Ke-P3 Series Defense Towers](#)

## Orbital Grid

[Shugosha I](#) is defended by an established "[Guriddo](#)" [Defense System](#) as part of the Shugosha System Defense Plan laid out by [Ketsurui-Motoyoshi Katsuko](#) in [YE 42](#). The system includes:

- 20 [Ke-H5-W3200 "Kyouheki" Defense Platforms](#) each typically controls two [Ke-H5-M3200 "Nesuto" Docking Platforms](#), but can handle more.
  - 10 [Ke-H5-M3200 "Nesuto" Docking Platforms](#) each with 18 [Ke-H5-W3201 "Suzumebachi" Attack Drones](#)
    - 180 [Ke-H5-W3201 "Suzumebachi" Attack Drones](#)

## Power Armor Facilities

The Power Armor Facilities integrated into the [Katsuko-Class Colony Installation](#) include:

- 300,000 suits of [Ke-M2-4 Series "Mindy" Armors](#)
- 100,000 suits of [Ke-M6-2 Series "Daisy" Armors](#)


## OOC Notes

[Andrew](#) created this article on 2020/02/13 08:16.

- [Andrew's Star Army Will](#)
- Unit patch created by [Yuuki](#).
- Layouts and Other Art created in DOGA and Fireworks MX by [Andrew](#).

Approved by [Syaoran](#) on [2/22/2020](#)

| Star Army Bases & Facilities |                            |
|------------------------------|----------------------------|
| Type                         | Bastion                    |
| Location                     | <a href="#">Shugosha I</a> |

| Star Army Bases & Facilities |   |
|------------------------------|---|
| Description                  | Defense Base  |
| Organization                 | <a href="#">First Expeditionary Fleet</a>   |
| Patch                        |  |
| Places of the SARPiverse     |   |
| Place Categories             | military facility   |

From:

<https://wiki.starmy.com/> - **STAR ARMY**

Permanent link:

[https://wiki.starmy.com/doku.php?id=starmy:bases:unmei\\_bastion](https://wiki.starmy.com/doku.php?id=starmy:bases:unmei_bastion)

Last update: **2023/12/21 01:01**

