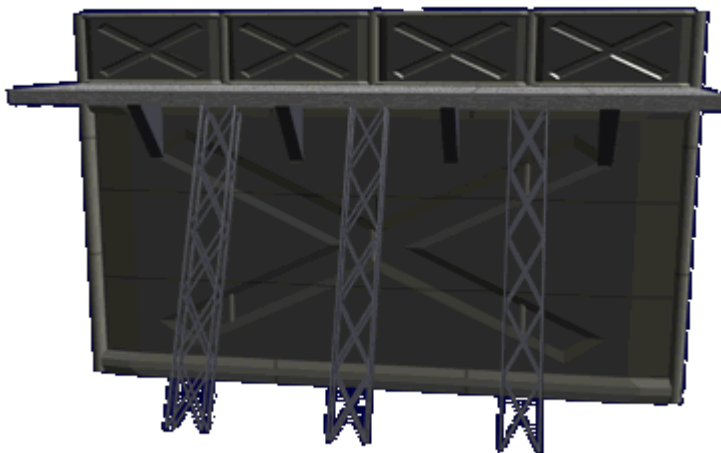
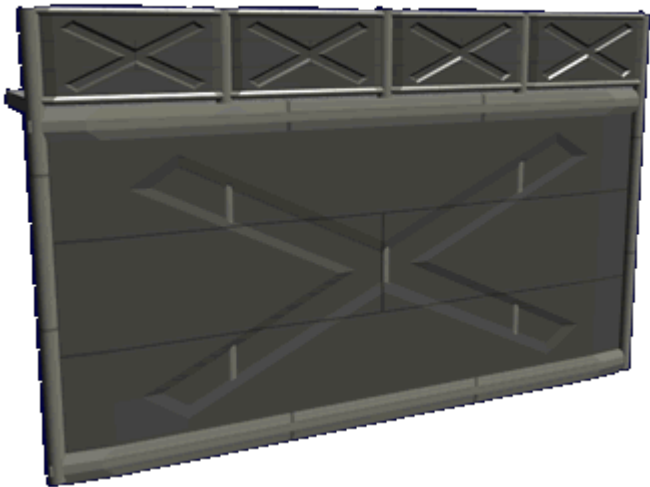


Ke-P5-01 - POM Standard Wall

The POM Standard Wall is a component of the [Type 33 Prefab Outpost Modules](#). It became available in [YE 33](#).

About the Ke-P5-01

This is one of the basic building blocks for the [Type 33 Prefab Outpost Modules](#). It serves as a defense barrier and a place from which the soldiers can defend the outpost. It features a walk way positioned four meters up, which provides a one meter barricade that the soldiers can duck behind or fire over. The walk way is covered in a non-skid surface.



Details

Class: Standard Wall Nomenclature: Ke-P5-01a Type: Prefab Outpost Module Designers: [Ketsurui Fleet Yards](#) Manufacturer: [Ketsurui Fleet Yards](#) Organization Using This item: [Star Army of Yamatai](#) Date entered service: [YE 33](#) Units Fielding: [Second Expeditionary Fleet](#), [Fourth Fleet](#)

Dimensions

Overall

- Height: 5m (16.4 ft)
- Length: 8m (26.4ft)
- Width: 2m (6.56 ft)

Damage Rating

See [Damage Rating \(Version 3\)](#) for an explanation of the damage system.

- 20 SP (Armor)

Features

- Replaceable [Durandium Alloy](#) panels 1m x 3m x .2m
- [Yama-Dura](#) framing
- Integrated wiring trunks
- Intercom port

From:
<https://wiki.stararmy.com/> - **STAR ARMY**

Permanent link:
https://wiki.stararmy.com/doku.php?id=stararmy:buildings:type_33_prefab_outpost:standard_wall

Last update: **2023/12/21 04:26**

