

# Kagai-Class Assault Ship

The Ge-C2-1a Assault Ship is [Geshrinari Shipyards](#) ship designed to carry and deploy a [Star Army of Yamatai Star Army Century](#); it became available in [YE 34](#).

## About the Ge-C2

The Ge-C2 is an Assault ship designed by [Geshrinari Shipyards](#) and submitted for a contract with the [Star Army of Yamatai](#). The Kagai is the same size as the [Urufu-Class Light Cruiser](#) which was designed for strike mission. The Kagai is capable of carrying a [Star Army Century](#) and all its support equipment.

The Ge-C2 is also equipped with a squadron of fighters to provide air support for the [Star Army Century](#) while deploying.



## History

After the success of the [Ge-C1](#), the company when it heard that the [Star Army of Yamatai](#) was looking for a ship capable of deploying larger numbers of troops, looked to their earlier design and investigated how they could modify it to meet the new specifications. The upper section was relatively unchanged except

for modifications to the weapons to make it more appropriate for planetary assault, and the lower decks were extensively modified. The prototype class ship keel was laid in third quarter [YE 34](#).

The Urufu completed its 5-year review early in [YE 37](#) and was reauthorized until at least [YE 43](#) and that authorization also extends to the Kagai.

## Appearance

The upper hull of the Kagai-Class hull is a tapered diamond shape. It is painted Star Army Blue and features the [Star Army Hinomaru](#) and registration on the top. It has a pair of wings along the forward hull to improve atmospheric performance. At the base of the wings the two torpedo tubes can be seen. Along the aft there are four Aether Plasma Drives painted gray which propel the ship for STL travel. The non-retractable weapons are visible. The underside features a large flattened cylinder which provides the added space for the larger load. On either side of it are two field deployment modules. These have multiple hatches which the Infantry can unload their equipment.

## Statistical Data



## General

Class: Kagai-class Nomenclature: Ge-C2-1a Type: Assault Cruiser Designers: [Tamahagane Corporation](#)  
R&D Manufacturer: [Geshrinari Shipyards](#), [Ketsurui Fleet Yards](#) Organizations using this ship: [Star Army of Yamatai](#) Price: 1,800,000 [KS](#)

## Crew and Accommodations

The Kagai-Class carries 68 Crew, 12 fighter crew, and 100 infantry.

### Crew

- Officers: 4
- Crew: 64
- Fighter crew: 12

## Infantry

See [Star Army Century](#) for breakdown.

## Accommodations

- Maximum Capacity: There are accommodations for 180 personnel
- Emergency Capacity: 500 people can fit aboard in an emergency using some of the other compartments.

## Dimensions

- Length: 320 meters (1,050 feet)
- Width: 150 meters (492 feet)
- Height: (Main) 32 meters (105 feet)
- Height: (Overall): 40 meters ( 131 feet)
- Decks: 7 (4 meters each)

## Propulsion and Range

### Speeds

The Kagai-Class has typical class 1 [warship speeds](#).

- Sublight Engines: .375c (~112,422 kilometers per second)(~69,856 miles per second)
  - Acceleration: .01 c/sec 0 to max in 37.5 seconds
- [Combined Field System/Continuum Distortion Drive](#):
  - Minimum: Resting motionless
  - Cruising Speed: 15,000c (~1.71 ly/h)
  - Maximum Speed: 18,750c (~2.14 ly/h)
- Hyperspace Drive: 394,470c (0.75 ly/m)

This ship is equipped with [Anti-FTL field](#) countermeasures.

## Durability and Maintenance

Service Lifespan: Estimated 20 years of constant use, possibly longer with refits.

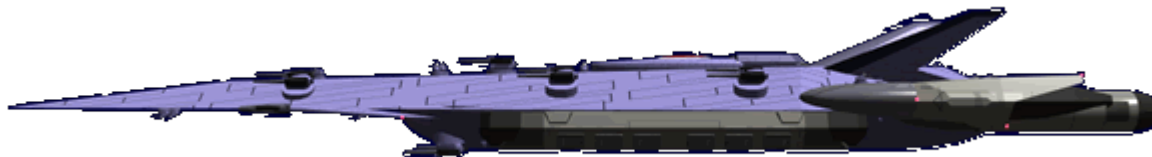
Refit Cycle: Frequent minor updates through the [PANTHEON](#) system and a refit once every four to five years.

## Damage Capacity

See [Damage Rating \(Version 3\)](#) for an explanation of the damage system.

Hull: 30 Shields: 30 (Threshold 3)

## Inside the Kagai



The Kaga-Class shares several decks with the Urufu-Class

### Deck 1

This deck is identical as the [Urufu-Class Deck 1](#).

### Deck 2

This deck is identical as the [Urufu-Class Deck 2](#).

### Deck 3

This deck is identical as the [Urufu-Class Deck 3](#).

### Deck 4

This deck houses the [Engineering](#), [Life support room](#), [Medical Center](#), [AMTC](#), [Ship's Store](#), [Star Army Alterations and Embroidery](#), [Fitness Center](#). Also located on this deck is [auxiliary control](#) a compact bridge that the command crew can transfer to if the primary bridge is damaged. It is possible to control the ship from the auxiliary control by a single operator. There are also six [Star Army Escape Pod, Type 30s](#).

## Deck 5

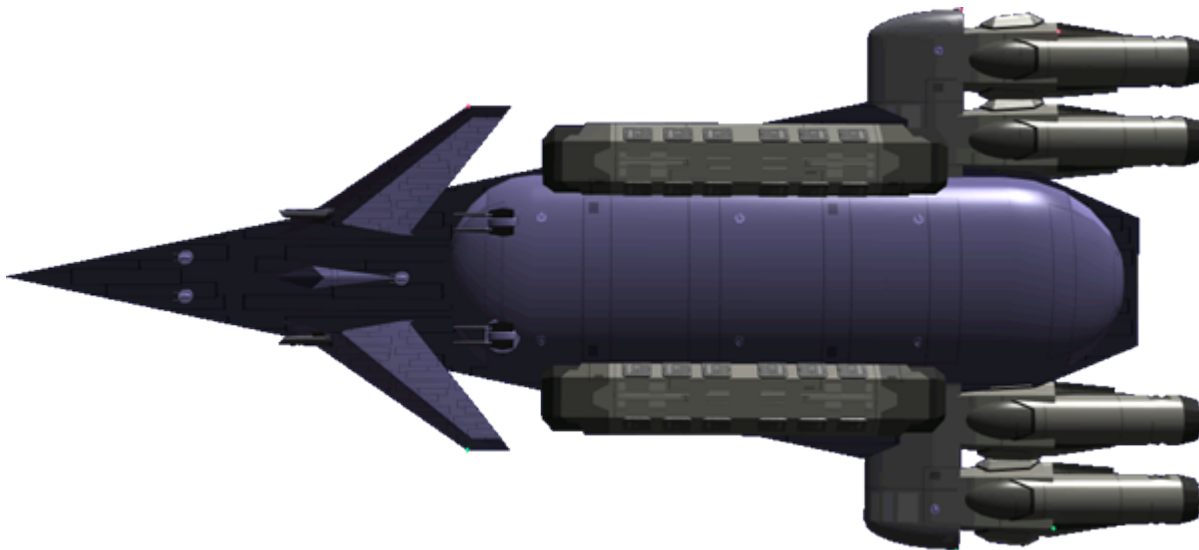
Also referred to as the *Infantry Deck Alpha* most of the facilities on this deck are living quarters for the Infantry Platoon it has the following: 12 [Squad Cabin](#), 6 [Crew Cabin](#), 4 [Officers Cabin](#), 6 [eight-person communal showers](#), 6 [eight-person communal toilets](#), [Armory upper level](#). There are also twenty [Star Army Escape Pod](#), [Type 30s](#) along hull.

## Deck 6

Also referred to as *Infantry Deck Beta* most of the facilities on this deck are for the support of the Infantry Platoon, it has the following rooms; 2 [Standard Star Army Wardroom](#), [Power Armor bay](#) which holds 100 power armor, [Armory lower level](#), [Fitness Center](#). A four [Laundry rooms](#) are present for the Infantry. There are also eight [Star Army Escape Pod](#), [Type 30s](#). There are 6 [Standard Star Army Crew Cabin \(Enlisted\)](#) for use by the pilots.

## Deck 7

This deck is taller than the other decks with four meters of space from floor to ceiling. It holds the cargo hold and vehicle bay. It also houses the redundant sensor array and the landing struts. The cargo/vehicle bay is 25 meters wide; 4 meters tall, and 40 meters deep. The maximum capacity of [medium SSCC's](#) is 150. This is due to leaving clearance for the crane and clearance for personnel to get around the crates safely. The rear section of this deck is the aerospace bay, for the small craft assigned to the craft.



## Deployment Pods (2)

The Ge-C2 features two Deployment pods. These are used to store all the Unit Equipment for the [Star Army Century](#) for quick deployment. Each pod is separated into six compartments.

- Length: 110 m
- Height: 10 m
- Width: 20 m

## Bays

The usage of the bays is the same regardless of which side they are on.

- Bay 1 is used for storing provisions. The starboard pod is loaded with 9,000 [Star Army Field Rations, Type 31](#), and 19,500 gallons of potable water. The port pod is filled with containers of regular food stuff, sufficient for 30 days.
- Bay 2 Used to store the POM Modules
- Bay 3 Used to store the POM Modules
- Bay 4 Used to store the POM Modules
- Bay 5 is used for storing the [Yusou Type 33 Grav-APCs](#). There is also maintenance equipment for them as well.
- Bay 6 is one of the two largest compartments. They are used for storing and maintaining the [Ke-T7 "Raccoon" Transport Shuttle](#). Each can hold up to four and have diagnostic equipment and tools for maintaining them.

## Emergency Release

Explosive bolts that attach the Pods can be used to detach them from the Kagai once they are placed on the ground. This allows them to serve as bunkers for the unit while establishing their base of operation. However this means a lengthy time on the ground to reattach them.

## Passageways

The Ge-C2 uses [Standard Passageways](#) for horizontal movement on the warship. Vertical movement is by [Zero-Gravity Passageways](#).

## Systems

### Ge-C2-H3400 - Armored Hull

The Ge-C2 is constructed using [Osmiridium](#) for its frame, and a .5-meter-thick hull of [Yamataium](#). Interior passageways and rooms are surrounded by [Yarvex](#) sheeting and protected from scalar fields by the internal gravity systems. The windows on the Ge-C2 are made of transparent [Yamataium](#).

## Ge-C2-E3400 - Computer and Sensor Suite

The Ge-C2 is equipped with a [Ge-C1-E3300 - Computer and Sensor Suite](#). The primary sensor array is located on deck one and the redundant array is on deck seven. A [Psionic Signal Controller](#) is installed.

## Ge-C2-P34xx Propulsion

### Ge-C2-P3400 Modular Aether Plasma Drives

The Ge-C2 is equipped with four Ge-C1-P3300 Aether Plasma Drives.

### Ge-C2-P3401 Hyperspace Fold Drive

The Ge-C2 is equipped with a standard [hyperspace fold](#) engine of [Geshrinari Shipyards](#) design.

### Ge-C2-P3402 Continuum Distortion Drive

The Ge-C2 is equipped with a [Geshrinari Combined Field System](#) which allows for [Continuum Distortion Drive](#) FTL.

### Ge-C2-P3403 Maneuvering Thrusters

The Ge-C2 is equipped with [Geshrinari Maneuvering Thrusters](#) for attitude control and station keeping.

### Ge-G2-P3404 Graviton Engine

The Ge-C2 is equipped with four [Geshrinari Graviton Engine](#) for landing and take off.

## Ge-C2-S3400 CFS Shield

The Ge-C2 is equipped with a [Geshrinari Combined Field System](#) that during combat is used to protect the vessel.

## Ge-C2-V3400 - Life Support System

The Ge-C2 is equipped with a [Ge-C1-V3300 - Life Support System \(SAOY\)](#).

## Ge-C2-W34xx

The Kagai is equipped with the following weapon systems.

### Ge-C1-W3300 - Torpedo Launcher

The Ge-C2 is equipped with two [Ge-C1-W3300 - Torpedo Launcher](#). They are primary used during landing loaded with counter measures or other weapons effective against ground forces.

### Anti-Starship Turrets

The Ge-C2 is equipped with ten [Ke-S3-W3101 Type 31 Secondary Anti-Starship Turrets](#).

### Ge-Y2-W3300 Anti-Armor Turrets

The Ge-C2 is equipped with fourteen [Ge-Y2-W3300 - Anti-Armor Turrets](#) to provide protection for the ship and the Infantry when offloading.

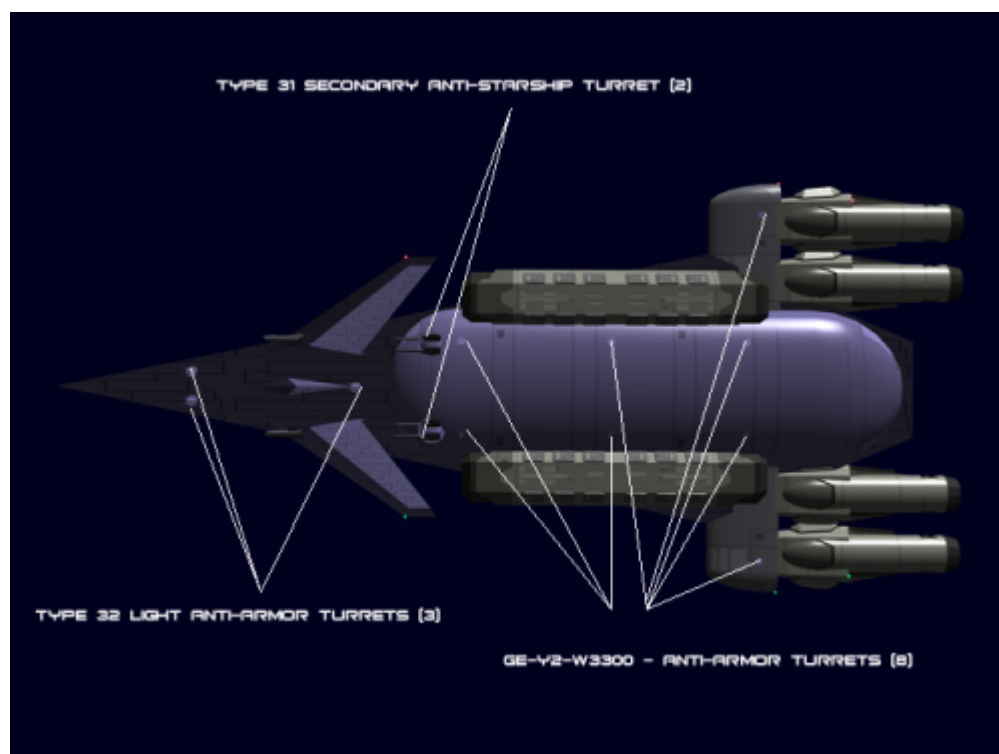
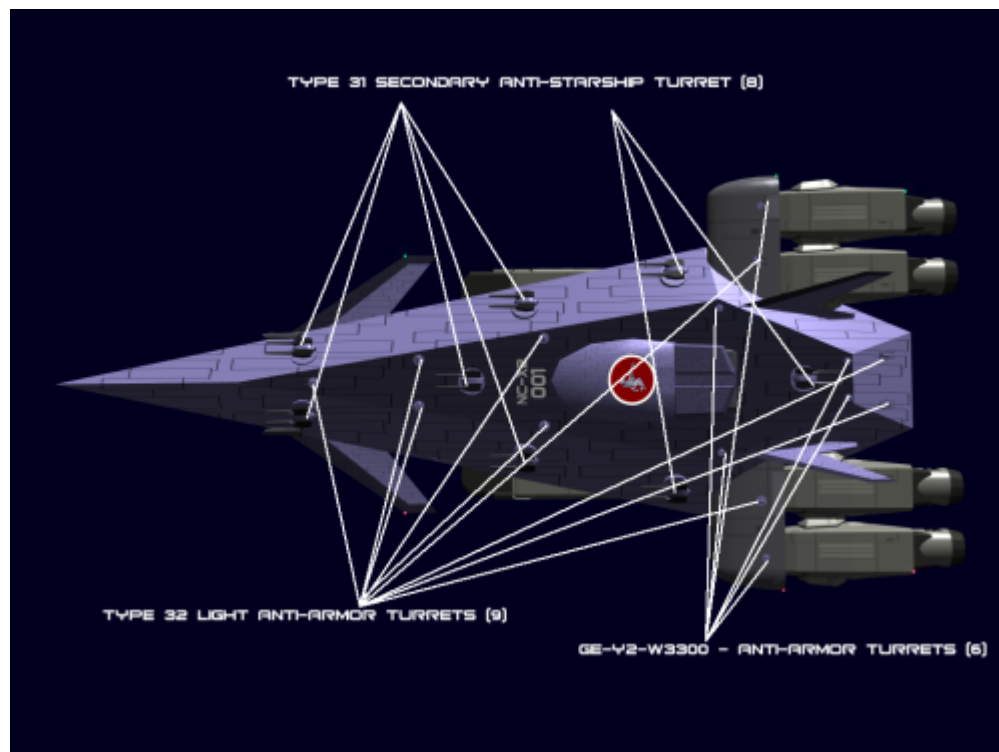
### Light Anti-Armor Turrets

The Ge-C2 is equipped with twelve [Type 32 Medium Anti-Armor Turrets](#) to provide addition firepower to against armor.

### Weapon Placements

*Click image to enlarge*





## Ge-C2-G34xx

The Ge-C2 is equipped with the following power systems.

### Ge-C2-G3400 - Aether Generator

The Ge-C2 is equipped with a [Geshrinari Aether Generator](#) for primary power.

### Ge-C2-G3401 - Fusion Generators

The Ge-C2 is equipped with a pair of [Geshrinari Fusion Generator](#) for secondary power.

### Emergency Systems

The Ge-C3 is equipped with all [Star Army Standard Starship Emergency Systems](#)

Details	
Item	Notes
<a href="#">Star Army Escape Pod, Type 30</a>	50
<a href="#">Star Army Fire Suppression System, Type 32</a>	
<a href="#">Soul Savior Pod</a>	1
<a href="#">Type 41 Blast Shutters</a>	Locations Engineering room Both Bridge and Auxiliary control Both Armories All shuttle bays Power armor bay Between decks on all vertical passages.
<a href="#">Standard Damage Control Station</a>	Locations Engineering room Both Bridge and Auxiliary control Flight deck Power armor bay three on each horizontal hallway (both ends and one in the middle)

### Vehicles

The Kagai typically has the following vehicles for its operation.

- 6 Star Fighters ([V8 Series](#), or other fighter)
- 1 [Ge-E1-1b - Tenba-Class Transporter](#) w/ [GS-E1-M3403 Troop Transport \(MCS\)](#)
- 3 [Ke-T7 "Raccoon" Transport Shuttle](#)
- 2 [Type 30 Container Handling Vehicle](#)

### Weaponry

- 2 Ge-C1-W3300 Torpedo Launchers [Ke-Z1 Series Torpedoes](#) or [Ge-Z1 Series Torpedoes](#) *damage per warhead.*
- 10 [Ke-S3-W3101 Type 31 Secondary Anti-Starship Turrets](#) - 3 [SDR](#)
- 14 [Ge-Y2-W3300 - Anti-Armor Turrets](#) - 1 [SDR](#)/ 5 [ADR Retractable](#)
- 12 [Type 32 Medium Anti-Armor Turrets](#) - 4 [ADR Retractable](#)

## OOC Notes

- Artwork by [Nashoba](#).

Star Army Logistics	
Supply Classification	Class A - STARSHIPS
Products & Items Database	
Product Categories	starships
Product Name	Kagai-Class Assault Ship
Nomenclature	Ge-C2-1a
Manufacturer	<a href="#">Geshrinari Shipyards</a>
Year Released	<a href="#">YE 34</a>
Price (KS)	1 ,800 ,000.00 KS

From:

<https://wiki.stararmy.com/> - **STAR ARMY**

Permanent link:

[https://wiki.stararmy.com/doku.php?id=stararmy:starship\\_classes:kagai-class](https://wiki.stararmy.com/doku.php?id=stararmy:starship_classes:kagai-class)

Last update: **2024/02/19 18:52**

