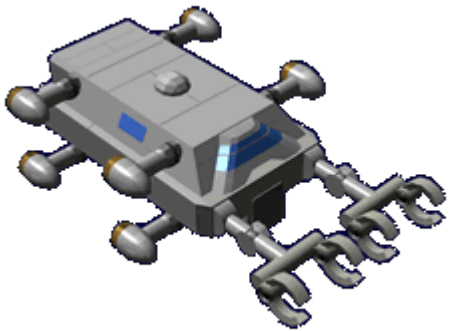


# Kainushi-Class Tug Vessel

The *Kainushi*-Class Tug Vessel is a ship used to maneuver large objects in space, it became available in [YE 32](#).



## About the Kainushi-Class

The *Kainushi* Tug is a multipurpose utility craft. It is designed to move things much larger than itself. It can typically be found at shipyards, depots and on [Anri-Class](#) ships. These are some examples of how it used:

- Moving disabled ships into repair bays.
- Moving ships that are being mothballed, or stored to their holding positions.
- Assist large space structures construction by moving large sections into position for installation.
- Loading and Offloading ships with Large - Huge [Standard Starship Cargo Containers](#) and [Detachable Outer Container](#)

Depending on the size of the object teams of *Kainushi* can be used.

## History

The *Kainushi*-class came about as a means of improving efficiency at shipyards and depots. [Ketsurui Fleet Yards](#) held a competition late in [YE 31](#) among its employees. The *Kainushi* was the winning design. Design work and refinement continued into the beginning of [YE 32](#) with the first working model being ready shortly into the new year.

In [YE 37](#), this ship completed its five-year review and was reauthorized for construction and use until at least [YE 42](#). The tug completed another review and the authorization as extended to [YE 47](#).

## Appearance

The *Kainushi* is a squat, boxy craft with eight engines mounted on its sides, and two large armatures in front. The *Kainushi* are painted an off-white to increase their visibility.

## Statistical Data

### General

- Class: Tug
- Nomenclature: Ke-L7-1a
- Type: Logistics
- Designers: [Ketsurui Fleet Yards, Takumi](#)
- Manufacturer: [Ketsurui Fleet Yards](#)
- Fielded by: [Star Army of Yamatai](#)
- Organizations using: [Star Army of Yamatai](#)

### Crew and Accommodations

- Crew: 6 (Minimum 1)
- Maximum Capacity: There are accommodations for 8 personnel
- Emergency Capacity: 32 people can fit aboard in an emergency, but the ship would be extremely cramped.

### Dimensions

- Length: 20 meters (65.6 feet) Fuselage, 32 meters (104 feet) Overall
- Width: 12 meters (39.36 feet) Fuselage, 20 meters (65.6 feet) Overall
- Height: 10 meters (32.8 feet)
- Decks: 2 (4 meters each)

### Propulsion and Range

#### Speeds

The *Kainushi-Class* is a nimble vessel.

- Atmospheric: 4 Mach
- Sublight Engines: .4c (~119,916 kilometers per second)

Note: The *Kainushi* normally only travels at higher speeds when not carrying anything.

## Durability and Maintenance

Service Lifespan: Estimated 20 years of constant use, possibly longer with refits.

Refit Cycle: Frequent minor updates through the [PANTHEON](#) system and a refit once every four to five years.

## Damage Capacity

See [Damage Rating \(Version 3\)](#) for an explanation of the damage system.

Hull: 8 Shields: 8 (Threshold 1)

## Inside the Kainushi-Class



Deck	Sections
One	Bridge, Captain's Office, Computer room, Wardroom, Toilets, and Showers
Two	Airlock, Medical Station, Fabrication, Engineering, Cargo Hold

## Airlock

The *Kainushi* has a [docking airlock](#). It is used for EVA, and transferring personnel from damaged vessels. It is located on the lower deck below the armatures.



## Avionics

The avionics on the *Hainushi* are mounted in a swiveling array in a dome on the top, to allow the craft to angle them for optimum operation.

## Bridge

The *Kainushi* features a [Basic Small Starship Bridge](#) for operating the craft. It is located on the upper deck in the bow. There are two toilets accessible from the bridge.

## Captain's Office

The Captain's office is a small room where the Captain can take care of administrative tasks. It contains a work desk with a control panel linked to the ship's computer. There is a padded chair for the Captain to use, and a work lamp on the desk. There is a small safe in the wall behind the desk. Located just aft of the bridge on the port side opposite the computer room.

## Cargo Hold

The *Kainushi* has a small [cargo area](#), it is capable of holding up to two large. [Standard Starship Cargo Containers](#). Hold dimensions are 7m (L) x 12m (W) x 3m (H).



## Computer Room

The *Kainushi* has a [Compact computer room](#) that houses the two [Ke-T8-E3103 Computer Arrays](#). It is located on the starboard side just aft of the bridge.

## Crew Bunks

The *Kainushi* has eight integrated bunks along the walls of the wardroom. Each bunk has a padded mattress, sheets (2) , pillow, blanket, a restraint harness to keep the occupant from being tossed around

in an emergency, an internal light, intercom, and a privacy panel that the occupant can close to keep out sound and light.

Additionally the *Kainushi* features these crew amenities:

- 2 [single crew showers](#) with [single toilet](#)
- 2 [single toilet](#) located next to the bridge

## Engineering

The *Kainushi* has most of the [standard engineering](#) features with the exception of no FTL drives.

## Fabrication Area

The *Kainushi* has a very limited fabrications area, equivalent to a [Ke-P1-06a - Workshop](#). It is solely present to allow the crew to make in-flight repairs to the ship. It is located starboard of the airlock on the lower deck.

## Maintenance Conduits

The *Kainushi* uses [standard maintenance conduits](#) for allowing access to internal systems.

## Medical Station

The *Kainushi* has a small room just off the Wardroom, where an [Ke-J1-E3102 - Autonomous Basic Medicine Unit \(ABMU\)](#) is installed for treating injured personnel.

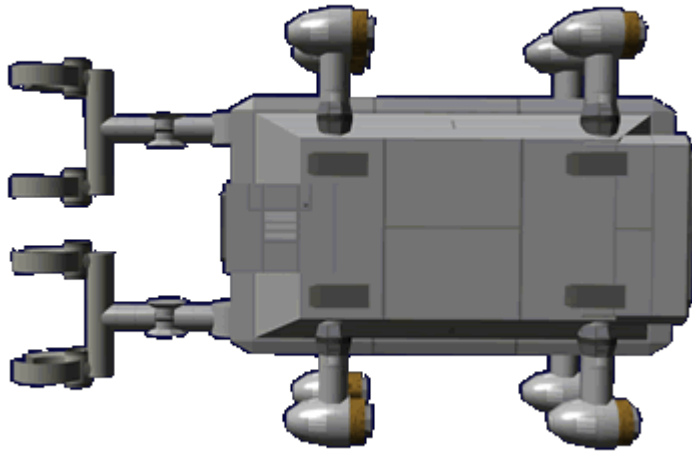
## Passageways

The *Kainushi* uses [Standard Passageways](#) for movement within the ship.

## Wardroom

The *Kainushi* has a combination conference room, dining area, and rec room. There is a large octagonal table in the center of the room, and two small tables along the far wall. The large table has a holoprojector for use during meetings, and for recreation. A [Ke-T8-M3102 Comfort Module](#) is mounted next to a pair of microwave/convection ovens. A freezer is installed beneath the counter that stores an assortment of precooked foods. An under counter dishwasher is also present to clean up cutlery and dishes.

# Ship Systems



## Armored Hull

The *Kainushi* has a [Yamataium](#) frame to provide structural strength for the ship. Its outer hull is [Durandium Alloy](#) plates .125 meters thick. All windows are made of [Transparent Durandium](#) and have an auto-polarizing screen to control the amount of sunlight that comes in.

## Computer and Sensor Systems

The *Kainushi* has the following systems from the [CIES](#).

### Unidirectional Sensors

Unidirectional sensors include variable wide-band imaging clusters, long-range gravimetric and magnetic resonance, distortion sensors and spectrometers, multi-band radar, and laser range finder. They are mounted dorsally and can be rotated as needed.

## Communications

The *Kainushi* uses the following communications system:

- Radio, full spectrum, Dual-Modulation, range theoretically unlimited except by interference. Practical range is short, since the waves only travel at light-speed.
- Emergency Beacon

## Combined Field System (Shields)

The *Kainushi* uses a [KFY Ke-L7-S3200 Combined Field System](#) to protect the ship from the hazards of space.

## Emergency Systems

- 4 [Standard Damage Control Station](#) two on each deck fore and aft.

## Intercom System

The *Kainushi* has a very simple intercom system. At least one intercom unit is present in each room near the exit. Some rooms such as the bridge have additional units at each bridge station. Each unit has an integrated speaker and sound activated microphone. A simple keypad allows the user to turn it off/on and select the desired station.

## Life Support System

The *Kainushi* uses the [KFY Star Army Standard Life Support Systems](#). Which are capable of supporting 40 people.

## Matter Collection System

The *Kainushi* has two Ke-L7-M3200 [Matter Collection Systems](#) installed dorsally and ventrally. The hydrogen collected is used to provide fuel for the plasma drives.

## Power Systems

The *Kainushi* has two power sources for safety purposes. Primary power is supplied by a [KFY Ke-L7-G3200 Aether Generator](#). Backup power is supplied by a [KFY Ke-L7-G3201 Fusion Generator](#).

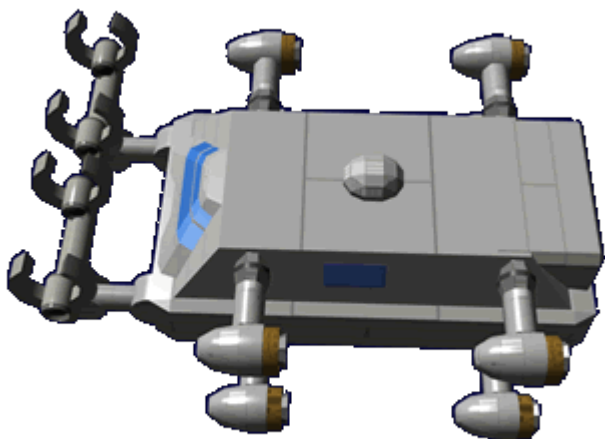
## Propulsion

The *Kainushi* is propelled by eight [KFY Ke-L7-P3200 Plasma Drives](#). The drives are mounted on swivel assemblies to allow the drives to control thrust direction. Fuel is gathered by the Ke-L7-M3200 [Matter Collection System](#).

The *Kainushi* also features eight [KFY Ke-L7-P3201 Maneuvering Thruster clusters](#) for docking and station keeping.

## Tow/Tug Armatures

The Ke-L7-M3201 Armatures on the *Kainushi* allow the ship to grab hold of the item it is going to move. It is equipped with two armatures. Each is constructed out of [Yamataium](#) to provide maximum strength. Each armature ends in four 'fingers' that actually grab the object. Each finger has a non-skid pad to assist with gripping. In those cases where there is no convenient grip points each finger tip can dispense [Molecure solution](#) to create a temporary bond.



## Emergency Explosive Release

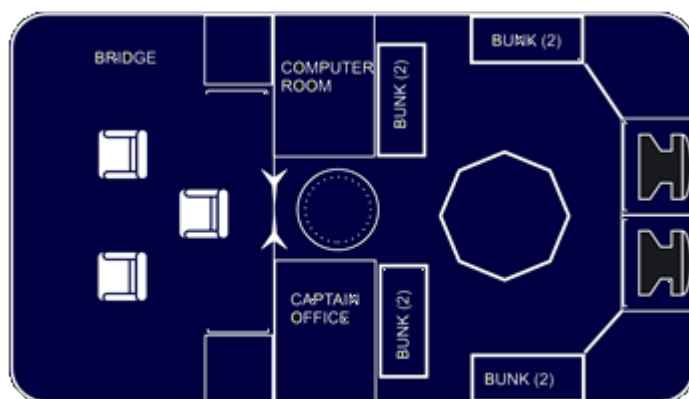
Each of the armatures have a series of explosive bolts installed where they attach to the *Kainushi*. In the event of an imminent catastrophic event the bolts can be blown allowing the ship to jettison the object and take evasive action.

## Non-technical data

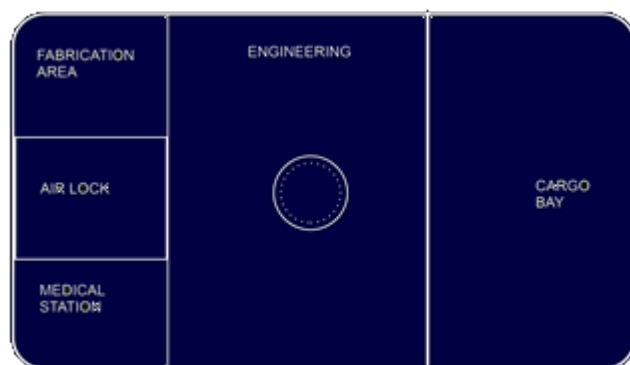
### Deck Plans

#### Upper Deck





## Lower Deck



## Kainushi in operation



## OOC Notes

Authored by [Nashoba](#) and approved by [Wes](#) on Mar 11, 2010 <sup>1)</sup>

Star Army Logistics	
Supply Classification	Class A - STARSHIPS
First Used	<a href="#">YE 32</a>
Last Review	<a href="#">YE 42</a>
Products & Items Database	
Product Categories	starships
Product Name	Kainushi-Class Tug Vessel
Nomenclature	Ke-L7-1a
Manufacturer	<a href="#">Ketsurui Fleet Yards</a>

<sup>1)</sup>  
<https://stararmy.com/roleplay-forum/index.php?threads/kfy-kainushi-tug.4963/>

From:

<https://wiki.stararmy.com/> - **STAR ARMY**

Permanent link:

[https://wiki.stararmy.com/doku.php?id=stararmy:starship\\_classes:kainushi](https://wiki.stararmy.com/doku.php?id=stararmy:starship_classes:kainushi)

Last update: **2023/12/21 01:02**

