

Nibasha-Class Heavy Freighter

The Nibasha-Class is a Heavy Freighter initially designed to move large quantities of materials for [Yamatai Star Empire](#)'s Department of Colonization and later adapted for use by [Star Army Logistics](#). It became available in [YE 32](#) and has been constructed in large quantities since then.

Price: 119,999.99 KS

About the Nibasha-class

The *Nibasha*-class is intended to fill the need for a Heavy Freighter to move large amounts of supplies and material from one location to another.

Nibasha is [Yamataigo](#) (邪馬台語) for wagon.

History

During [YE 32](#), the second year of the [Second Mishhuvurthyar War](#), the Department of Colonization needed to upgrade their capability to move supplies to colonies and to the Star Army's fleets. They contacted [Ketsurui Fleet Yards](#) after the release of [Minori-Class Hospital Ship](#), which was based on the [Henry Chen-class Training Ship](#). KFY took the existing hull and made a cargo-transport variant. The Nibasha-class quickly caught the attention of [Star Army Logistics](#), which was feeling the crunch of trying to get materials to where they were needed. They quickly became the Star Army's main workhorse for shipping, replacing the [Courier 2B Star Army Freighter](#) in several fleets.

In [YE 36](#), 250 of the ships were temporarily equipped with [passenger compartments](#) in their cargo bays and used to transport millions of refugees back to the [Yugumo Cluster](#).

In [YE 37](#), this ship completed its five-year review and was reauthorized for construction and use until at least [YE 42](#). [YSS Tomoyo](#) was a Nibasha-class built that year.

As of [YE 38](#), when the [Kuvexian War](#) began, the Nibasha-class remained popular in the Star Army and is one of the most common ship classes, and new hulls were still being produced.

In [YE 41](#), the 100 Nibasha-class freighters of [Sixth Fleet](#) fought valiantly to the end in the [Battle of Hanako's Star](#) during the [Kuvexian Invasion of YE 41](#). Their cargo bays were loaded with extra weaponry and fighters and whatever could be found to augment their combat capabilities but the [Kuvexian Military](#) forces were overwhelmingly numerous.

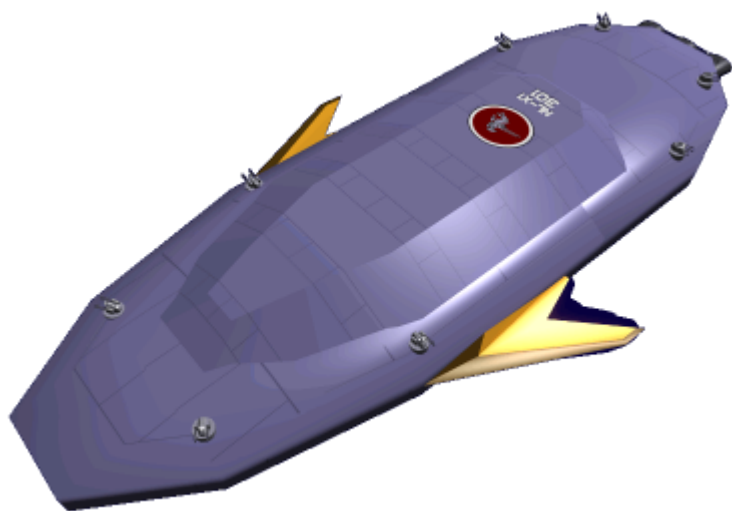
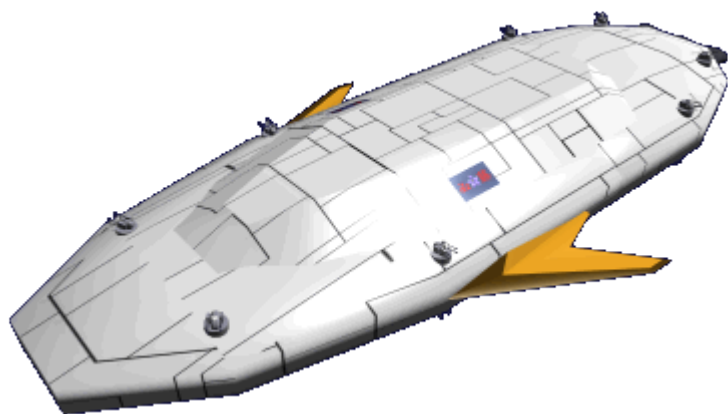
At the end of [YE 41](#), there were 2,230 Nibasha-class freighters in service in the Star Army of Yamatai. 2,000 of those were in [Star Army Logistics](#) and the rest were scattered in various fleets, task forces, and the [Star Army Rikugun](#).

In [YE 42](#), 100 Nibasha freighters were lost with the [Second Fleet](#) at the [Third Battle Of Nataria](#). The class also received a 5-year review and was authorized for construction and use until at least [YE 47](#).

In [YE 44.9](#), there were 2,532 Nibasha-class starships in Star Army of Yamatai service. 2,502 of them were assigned to Star Army Logistics divisions and the rest were in fleets and the Rikugun.

Appearance

The *Nibasha-Class* has the same basic lines as the [Minori-Class Hospital Ship](#). The Department of Colonization version has a white hull and the flag of the [Yamatai Star Empire](#) on each side. The Logistics version has the [Star Army Hinomaru](#) on top, and is painted Star Army blue. Both versions the fins are painted orange. The point defense system of sixteen [Ke-S3-W3102 Star Army Anti-Fighter Turret, Type 31](#) can be seen dotting the perimeter. The three large [Turbo Aether Plasma Drive](#) drives are also prominent.



Statistical Data

General

- Class: Nibasha-Class Heavy Freighter
- Nomenclature: Ke-L6-4a - Department of Colonization
- Nomenclature: Ke-L6-4b - [Star Army Logistics](#)
- Type: Freighter
- Designers: [Ketsurui Fleet Yards](#), [Takumi](#), [Ketsurui Zaibatsu](#)
- Manufacturer: [Gemini Star Fortress](#), [Libra Star Fortress](#), [Ketsurui Fleet Yards](#)
- Organization Using This item: [Star Army Logistics](#), Department of Colonization
- Date entered service: [YE 32](#)

Crew and Accommodations

- Crew: 200 (175 Enlisted, 25 Officers)
- Emergency Capacity: 750 people can fit aboard in an emergency, but the ship would be extremely cramped.

Dimensions

- Length: 369.5 meters (1,211.96 feet)
- Width: (Fuselage) 120 meters (393.6 feet)
- Width: (Overall) 200 meters (656 feet)
- Height: 60 meters (196.8 feet)
- Decks: 14 (4 meters each)

Speeds

- Atmospheric: Cruise: 2,283 kmph (3,675 mph) Maximum: 6,125 kmph (3,806 mph)
- Turbo Aether Plasma .3c (~89,937 kilometers per second) (~55,884 miles per second)
- [Combined Field System/Continuum Distortion Drive](#):
 - Minimum: Resting motionless
 - Cruising Speed: 10,000c (~1.144 ly/h)
 - Maximum Speed: 12,500c (1.43 ly/h)
- Hyperspace Drive: 394,470c (0.75ly/m)

Durability and Maintenance

- Service Lifespan: Estimated 20 years of constant use, although this could certainly be extended.
- Refit Cycle: Frequent minor updates through the [PANTHEON](#) system and a refit once every two or three years.

Damage Capacity

See [Damage Rating \(Version 3\)](#) for an explanation of the damage system.

Hull: 32 Shields: 40 (Threshold 2)

Inside the Nibasha-Class Heavy Freighter

Deck	Sections
One	Cargo Hold A, Freight Elevator
Two	Cargo Hold A, Freight Elevator
Three	Cargo Hold B, Freight Elevator
Four	Cargo Hold B, Freight Elevator
Five	Cargo Hold C, Freight Elevator
Six	Cargo Hold C, Freight Elevator
Seven	Engineering , Bridge , Avionics , Wardroom
Eight	Engineering , Computer room w/MEGAMI , Crew lounge , Ship's Store , Post Office , Armory
Nine	Engineering , Crew Quarters , 8 Laundry , Crew Mess & Galley , Armory
Ten	Fabrication Area , Recreation / Fitness Area
Eleven	Cargo Hold D, Freight Elevator
Twelve	Cargo Hold D, Freight Elevator
Thirteen	Shuttle Bay , Freight Elevator , Vehicle bay
Fourteen	Shuttle Bay , Freight Elevator , Vehicle bay

Ship Systems

Armored Hull Ke-L6-H3200

The *Nibasha-Class* uses a lighter hull than the Ke-L6-H3100 hull. The exterior is a 1.25-meter-thick layer of [Yama-Dura](#) attached to the [Durandium Alloy](#) frame of the ship. All windows on the *Nibasha* are made of [Transparent Durandium](#).

Cargo Holds

The cargo holds are designed for intermodal containerized cargo and span two normal decks. They have all the [Standard Star Army Cargo Area](#) features. A network of catwalks are present on the sides for access to the equipment.

Hold Capacity						
Hold	Dimensions	Capacity	SSCC Huge	SSCC XL	SSCC Large	SSCC Medium
A	144m x 48m x 5m	34,560m ³	66	171	532	1064
B	144m x 72m x 5m	51,840m ³	98	252	784	1568
C	264m x 96m x 5m	126,720m ³	247	646	1976	3952
D	144m x 72m x 5m	51,840m ³	98	252	784	1568
Total		264,960m ³	509	1321	4076	8152

Note: Total Hold Capacity capacity excludes the freight elevator space. Hold D is modified so that it has four separate temperature zones. It can be used as freezer or refrigerator section for perishable goods.

Freight Elevators

There are four freight elevators that run from the bottom to the upper deck. They are designed to handle [Standard Starship Cargo Containers](#). Two of them are large enough for Huge-size SSCC's and two are for size SSCC-Large.

Recreation / Fitness Area

Located on deck ten of the *Nibasha-Class Heavy Freighter* is the recreation and fitness area. This large area is designed to help keep the crew physically fit. The fitness side contains an assortment of exercise machines: weights, treadmills, etc. The other side is for recreation. It is configurable, for various activities; such as group calisthenics, practicing katas, martial art matches, other sports. Due to the size of the *Nibasha-Class Heavy Freighter's* compliment, there is an actual running track that surrounds the fitness area.

Weapons Systems

The *Nibasha-Class Heavy Freighter* is armed to defend itself from small craft and missiles. It depends upon escorts for protection from starships.

- 16 [Ke-S3-W3102 Star Army Anti-Fighter Turret, Type 31](#) (Tier 9, Heavy Anti-Mecha) Point defense



Small Craft Complement

- 22 [Ke-T7 "Raccoon" Transport Shuttle](#)



- 6 Ke-T8 "Kuma" Multi-role Shuttle



OOC Notes

Article and artwork by [Nashoba](#).

Star Army Logistics	
Supply Classification	Class A - STARSHIPS
First Used	YE 32
Last Review	YE 42
Products & Items Database	
Product Categories	starships
Product Name	Nibasha-Class Heavy Freighter
Nomenclature	Ke-L6-4b
Manufacturer	Ketsurui Fleet Yards
Price (KS)	119,999.99 KS

From:
<https://wiki.stararmy.com/> - **STAR ARMY**

Permanent link:
https://wiki.stararmy.com/doku.php?id=stararmy:starship_classes:nibasha-class_heavy_freighter

Last update: **2023/12/21 01:02**

