

Super Eikan-class Heavy Cruiser

Named after [Taisho Eikan Minato](#), [Ketsurui Fleet Yards](#) Ke-C12-2A "Super Eikan" is a larger rebuild of the earlier *Eikan* Cruiser.



About the Ship

The original Ke-C12-1 series *Eikan* was a replacement for the older [Ayame-class Cruiser](#). The Ke-C12-2 Super Eikan is an improved, expanded version of the Eikan that replaced the older model in [YE 33](#).

While some other craft are designed with a multi-purpose mission, the *Eikan* is focused on space warfare; all priorities are second to actual damage output and capacity. *Eikan* Heavy Cruisers also include a number of countermeasures to overcome enemy technologies designed to work against the [Star Army equipment](#).

Key Features

- Well-armed
- Extremely Tough
- Heavy Sublight Engines
- Large amount of point defense weapons
- Countermeasures

Mission Specialization

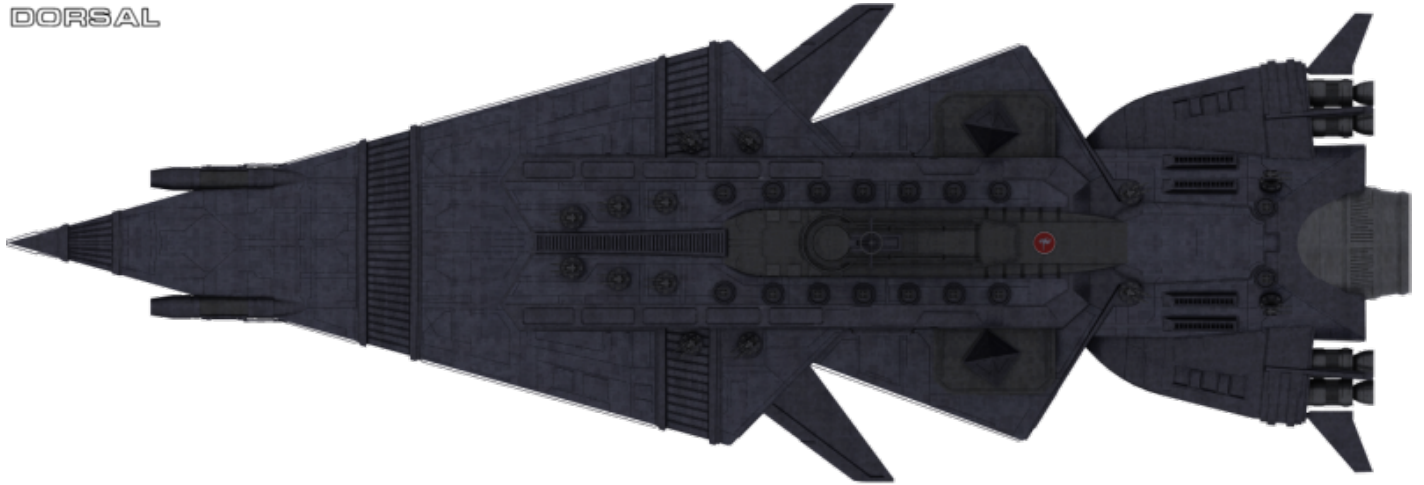
The *Super Eikan* specializes in starship combat and large-scale fleet warfare. It is also equipped to serve as a command vessel for small to mid-size squadrons.

Appearance

The *Eikan*-Class Heavy Cruiser has a jagged arrowhead shape and a sloped central section. Hull color is the standard Star Army light blue-gray with some dark gray accents. It has two dorsal “pyramids” like the [Sharie-class Battleship](#). It has a large main sublight engine clusters with three smaller engines on either side. The engines glow a bright teal color.



DORSAL

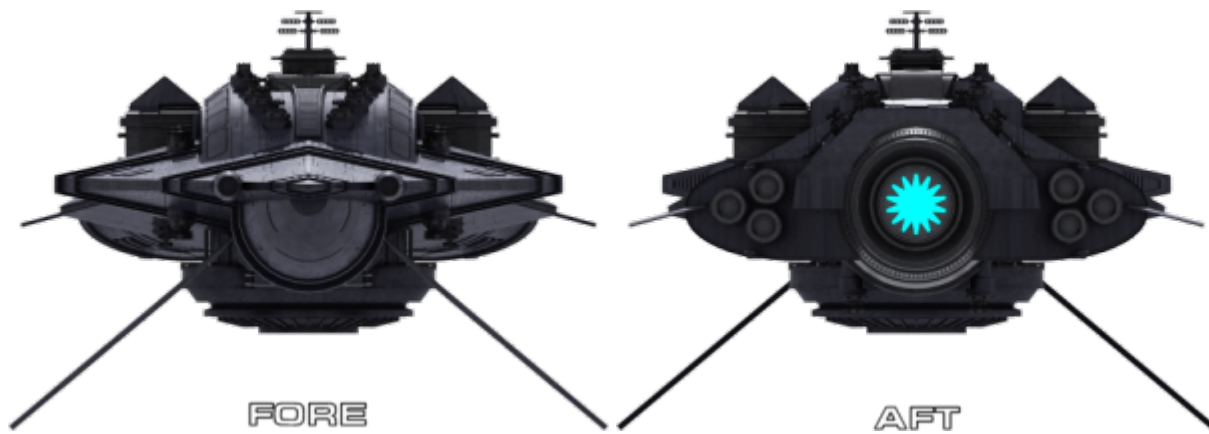


PORT SIDE



VENTRAL

COPYRIGHT 2013
STARARMY.COM



Original DOGA Model by Wes



History and Background

Development of the C12 Cruiser began under [Taisho Ketsurui Yui](#) in [YE 30](#) as a response to delays and issues with the C10 Cruiser Project (which was eventually canceled). The [Star Army](#)'s main cruiser, the [YE 24 Ayame-class Cruiser](#), was growing old and Yui's desire for a new battleship, cruiser, and carrier was growing increasingly. The C12 was originally conceived as a small battleship, but was downgraded to a cruiser as the [Sharie-class Battleship](#) finally began growing closer to fruition.

A redesign began in [YE 32](#) with a goal of completing the redesign by the end of the year. It had the following requirements:

- Size increase to 500+ meters to accommodate more fighters, cargo, and anti-starship weapons
- Standardize weapon turrets

The "Super" Eikan design was highly successful. First introduced in spring [YE 33](#), the Super Eikan has become sought after by fleet admirals. By the end of [YE 33](#) ships of this class had been produced in large numbers and were the backbone of the [Star Army of Yamatai](#) fleets.

The Eikan completed its 5-year review in [YE 37](#) and was reauthorized for production and use until at least [YE 42](#).

In [YE 42](#), the Star Army evaluated the performance of the Super Eikan and decided to continue to produce them until at least [YE 47](#).

In [YE 43](#), many Eikan-class cruisers were destroyed in the [Battle Of Glimmergold](#), including 3,882 in [First Fleet](#) and 425 in Second Fleet.

Statistics and Performance

- Class: Ke-C12-2 Series
- Type: Heavy Cruiser
- Designers: [Star Army of Yamatai](#)
- Manufacturer: [Ketsurui Fleet Yards](#) beginning in [YE 33](#)
- Production: Over 620 in service
- Fielded by: [Star Army of Yamatai](#) only

Passengers

- Crew: A crew of at least 100 is recommended. Due to a high degree of automation, the ship could be operated by a single person.
- Maximum Capacity: There are accommodations for 200 people. About 500 people could be crammed aboard in an emergency.

Dimensions

- Length: 525 meters (1,722 feet)
- Width: 192.5 meters (632 feet)
- Height: 150 meters (492 feet)
- Decks: 20 (4 meters each)

Where It Fits

- Internal Contruction/Repair Bays of an [Iori-Class Star Fortress](#)

Comparison

Comparison with a [Sharie-class Battleship](#):



Propulsion and Range

The Super Eikan is designated as a “Category 1” starship (standard warships) by the Star Army of Yamatai and has the following travel capabilities:

- Sub-light drive capable of speeds up to .375c (~112,422 kilometers per second)
- Continuum Distortion Drive: 18,750c (~2.14 ly/h)
- Hyperspace Fold Drive: 394,470c (0.75 ly/m)

- Sublight Boost: Triple speed available for up to ten minutes
- Range: Unlimited
- Lifespan: 20+ years estimated service life
- Refit Cycle: Frequent minor updates through the PANTHEON system and a refit once every three years

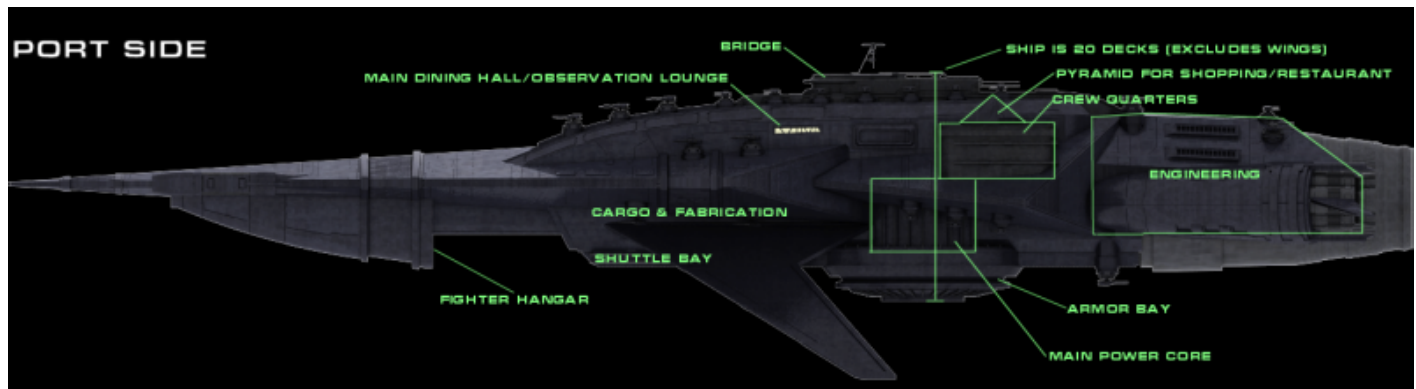
Damage Capacity

See [Damage Rating \(Version 3\)](#) for an explanation of the damage system.

- Hull: 40
- Shields: 40 (Threshold 4)

Inside the Ship

The Eikan has an interior that is typical of the [Star Army of Yamatai](#) and uses standardized compartment designs.



Compartment Layouts

- [Standard Medium Starship Bridge \(Sakura type\)](#)
- [Standard Star Army Crew Lounge](#)
- Enlisted: [Standard Star Army Crew Cabin \(Enlisted\)](#)
- Officer: [Standard Star Army Officers' Cabin](#)
- [Sakura-type Medical Laboratory](#)
- The ship has a large network of [Standard Star Army Maintenance Conduits](#).
- The ship uses the [Standard Star Army Power Armor Bay](#)
- [Standard Star Army Shuttle Bay](#)
- [Standard Star Army Wardroom](#)

Ship Systems

Armored Hull

The key substance that makes up the .5-meter-thick hull of the ship is [Yamataium](#). The frame of the ship is [Yamataium](#), while armor plates are made of [Yamataium](#)-coated [Zesuaium](#). A [Xiulurium](#) coating has also been added to counter aether-detecting sensors and anti-aether devices. All interior passageways and rooms are protected from scalar fields by the internal gravity systems.

Combined Field System

The *Eikan* has an excellent [Combined Field System](#) that can generate an [Anti-FTL Field](#) with a 2.5 au radius. The *Eikan*'s CFS field generators are designed to mask the ship's movement and minimize the ship's effect on surrounding space. A “silent running” mode is also available, similar to the one first used on the [Yuuko-class Gunboat](#).

Computer and Sensor Systems

The *Eikan* uses the [MEGAMI Integrated Electronics System](#) package and is also equipped with an [Active Jamming System](#).

Emergency Systems

The Plumeria contains all [Star Army Standard Starship Emergency Systems](#).

Escape Pods

[Ke-S3-X2900 Escape Pod](#) escape pods are located on decks 3 and 4, and at various other locations on the ship.

Soul Savior Pod

The *Eikan* includes one [Soul Savior Pod](#).

Life Support Systems

The ship has a very thorough recycling system, tied into a [Hemosynthetic Conduit System](#), which breaks

down anything classified into “waste” into its atomic components. The air recycling system (which is segmented and highly monitored for security reasons) can support up to 500 [Yamataian](#) or [Nekovalkyrja](#), [Type 33](#) personnel up to twenty years. Water can be recycled for twenty years as well. *Eikan* is also equipped with a [Psionic Signal Controller](#).

Power Systems

The *Eikan* Heavy Cruiser's main power sources are high-output aether generators; the cruiser also includes fusion and anti-matter reactors. The *Eikan* boasts an extremely robust power distribution system that is built to withstand and control tremendous surges (such as those caused by electrogravitic and electromagnetic pulses and anti-matter ion weaponry). Plentiful capacitors allow the ship to run for a while without any power being produced.

Cooling System

All major heat-generating pieces of equipment are paired with appropriately-sized heat absorbers, which rapidly and effectively absorb thermal radiation and convert it to usable energy.

Propulsion

The *Eikan* features three methods of propulsion: it carries auxiliary engines for sublight travel, has a hyperspace fold generator, and can also use its combined field to travel at slower-than-light and faster-than-light speeds.

Auxiliary Engines

At the aft of the ship, these four giant engines can move the ship up to cruising speeds of .375c and maximum speeds of .99c (although this can wear the engines heavily) for up to ten minutes.

Combined Field

The primary method of travel in combat. See [Continuum Distortion Drive](#) and [Combined Field System](#).

Fold System

Eikan's fold system can reposition the ship to a new location in space. The hyperspace fold generator takes approximately fifteen seconds to charge.

See: [Hyperspace Travel](#)

Shield Systems

The Super Eikan uses a standard [Combined Field System](#).

Weapon Systems

- [Aether Shock Array](#)
- 2 Super-heavy weapons Tiers 14
- 20 [Ke-S3-W3101 Type 31 Secondary Anti-Starship Turret](#)
- 22 [Ke-S3-W3102 Star Army Anti-Fighter Turret, Type 31](#)



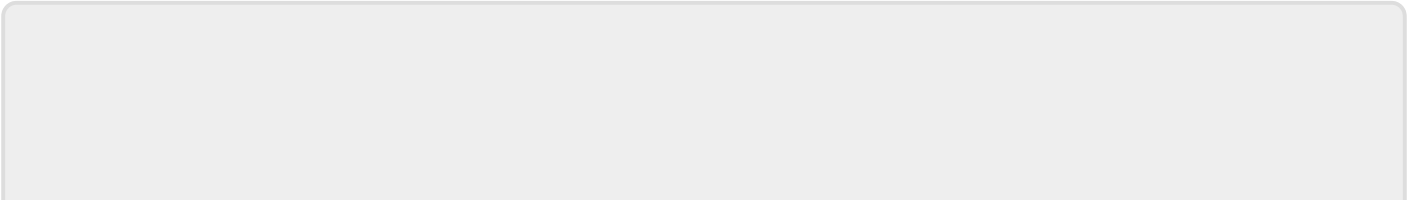
Vehicle Complement

- 10 [Ke-T7 "Raccoon" Transport Shuttle](#)
- 10 [Ke-V6-1D "Hayabusa" Starfighter](#)

OOC Notes

Page created by Wes. Artwork by Wes and Adam Kopala (commissioned).

Star Army Logistics	
Supply Classification	Class A - STARSHIPS
First Used	YE 33
Last Review	YE 42
Products & Items Database	
Product Categories	starships
Product Name	Super Eikan-class Heavy Cruiser
Nomenclature	Ke-C12-2A
Manufacturer	Ketsurui Fleet Yards



From:

<https://wiki.stararmy.com/> - **STAR ARMY**

Permanent link:

https://wiki.stararmy.com/doku.php?id=stararmy:starship_classes:super_eikan



Last update: **2023/12/21 01:02**