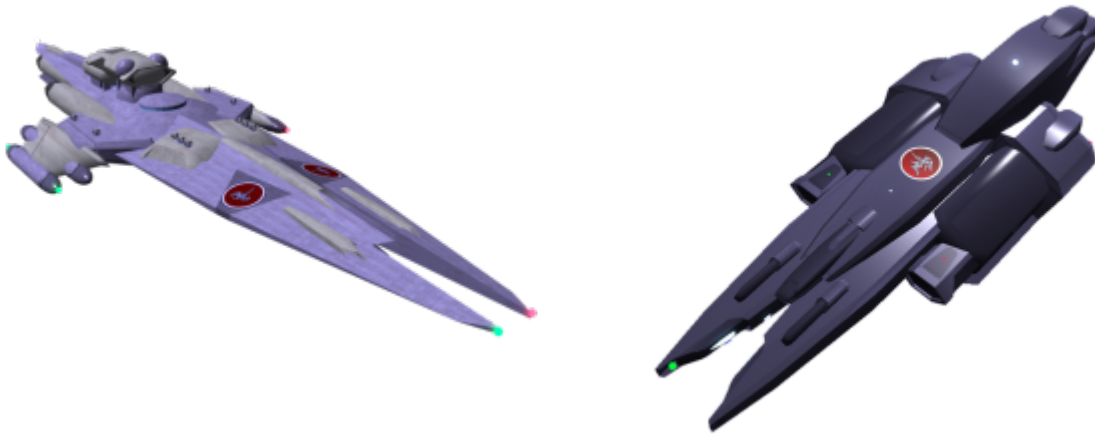


# Takumi-Class Expeditionary Command Cruiser

The Takumi-Class Expeditionary Command Cruiser is a Capital Ship that was first produced in [YE 29](#). The 1A version served until it had a minor refit, a year later, in [YE 30](#). The 1B proudly served the [Star Army of Yamatai](#) until it was finally reviewed again in [YE 43](#) and was given a major rebuild to the 2A version which gave the vessel a future once again in the [Star Army of Yamatai](#).



(1A/B on the left, 2A on the right)

Takumi (匠) is a [Yamataigo](#) (邪馬台語) word meaning “artisan” or “skilled”.

## History and Background

The Takumi-Class Expeditionary Command Cruiser was a design submitted to [Ketsurui Fleet Yards](#) by [Ketsurui-Motoyoshi Katsuko](#) in [YE 29](#). At the time, Katsuko commanded the [Fifth Expeditionary Fleet](#); a fleet that had an extensive history of exploration and colonization for the [Star Army of Yamatai](#). The identified need was for a force-protection weapon that would accompany colonization fleets and the design followed another submitted by [Ketsurui-Motoyoshi Katsuko](#), for the [Hummingbird-class Colony Ship](#). A few months later [Ketsurui Fleet Yards](#) had reviewed and accepted the design and choose [Taiie no lori](#), an [lori-Class Star Fortress](#) in the [Fifth Expeditionary Fleet](#) to build the prototype, the *YSS Takumi*.

Unfortunately, the prototype became delayed when [Taiie no lori](#) was destroyed, thankfully the prototype had been undergoing field tests in the nearby [Katsuko's Nebula](#) when the tragedy occurred. Production was then resumed at Luna Bianca Shipyards in the [Yamatai Star System](#). The program proved successful and several ships of the class were produced and put into service in the [First Expeditionary Fleet](#), [Second Expeditionary Fleet](#), [Fifth Expeditionary Fleet](#) and throughout the entire [Star Army of Yamatai](#). One of the most notable ships of the class was the *YSS Yugumo*, which played a key role in the exploration and discovery of systems in the [Yugumo Cluster](#).

In [YE 30](#), the Takumi-Class received its first major update and refit; which was centered around the installation of [MEGAMI](#) to replace [Warship Integrated Electronics System \(WIES\)](#). It increased the ship's position in the [PANTHEON](#) hierarchy to a place that was more suited for the role the ship played in the

fleets. This refit is considered the 1B version of the ship.

The 1B version of the Takumi-Class Expeditionary Command Cruiser had a long term of service in the [Star Army of Yamatai](#), as of the beginning of [YE 43](#), there were sixteen remaining ships of the class in active service; which included two in the [Second Expeditionary Fleet](#), two in the [Fourth Fleet](#), eleven in [Task Force 75](#) and one in the [First Expeditionary Fleet](#).

The [YSS Mazu](#), the only Takumi-Class Expeditionary Command Cruiser in the [First Expeditionary Fleet](#), which has a long history in the [Star Army of Yamatai](#) <sup>1)</sup>, was transferred at the request of [Ketsurui-Motoyoshi Katsuko](#) to the [First Expeditionary Fleet](#) as a project ship in [YE 41](#). <sup>2)</sup> The [YSS Mazu](#) was overhauled, rebuilt<sup>3)</sup> and updated at [Gemini Star Fortress](#) and would become for the prototype for the 2A version of the ship. The ship made its debut at the liberation of the [Scrapyard System](#) which proceeded the [Battle Of Glimmergold](#).



(2A, Lateral View)

## Description and Design Goals

The Takumi-Class Expeditionary Command Cruiser is a long-range capable force protection unit that is ideal for Expeditionary Warfare. It has a capable weapons platform with additional factory and fabrication functions to prolong the amount of time a force can spend outside of the normal range of the [Star Army of Yamatai](#), especially when it is accompanied by specialized support vessels.

It also serves as a platform with decent survivability for stand-alone operation, which is easily modified for peace-time functions and multiple mission profiles. While its size contributes to its strength, it also serves as a weakness due to maneuverability and logistical concerns about staffing during shortages. Thankfully the [MEGAMI](#) can mitigate some of these concerns with automation and the creation of sprites.

## Design Goals and Mission Specialization

The Takumi-Class Expeditionary Command Cruiser was designed to meet the following design considerations, derived from the notes of [Ketsurui-Motoyoshi Katsuko](#) and [Star Army Research Administration](#)'s response to the initial design proposal:

1. A capital ship of the 'Command Cruiser' classification capable of performing independent operations with limited need for resupply or fleet resources.
2. A vessel identified as a 'long-range force protection weapon' specifically with colonization fleets in mind.
3. A vessel equipped with state-of-the-art laboratory facilities, capable of handling a large volume of samples, specimens, and equipment.
4. Large production bays for the production of mission-specific equipment, weapons, and other products.

## 2A Design Considerations and Refit Log

When the 2A design changes were being considered by [Ketsurui-Motoyoshi Katsuko](#), the following considerations were made:

1. The size of the Takumi-Class Expeditionary Cruiser truly puts the ship in the category of Expeditionary Battleship. The designation will be kept purely to express the design lineage of the ship.
2. Expeditionary Warfare needs to continue to be design ethos; long-term deployments without resupply or return to port. Also, improve stand-alone usefulness and survivability.
3. The design requires updates to current technologies.
  1. [Integrated CFS Array](#) and elimination of nacelle pods that used to house [Continuum Distortion Drive](#) coils.
  2. Replacement of the [Hemosynthetic Conduit System](#) with the new [Nodal Liquid Conduit System](#).
  3. Updates to Laboratory Complexes; replacements with [Star Army Combined Sciences Laboratory](#) and [Star Army Standard Hospital Center](#).
  4. Update the Takumi Command Deck to the [Type 34 Standard Large Starship Bridge](#).
  5. New Launchbays, included on the lateral structures of the ship.
4. Elimination of vulnerable tower structures. Submerged in-structure Bridge.
5. Updates to Configurations and Inventories.
  1. Added new Weapons Systems to [YE 43](#) standards.
  2. Updated [Star Army Small Craft](#) inventory.
  3. Updated Power Armor and Mecha inventory.

## Statistics and Performance

Statistical and performance information for the Takumi-Class Expeditionary Cruiser.



(2A Version, Ventral View)

General Information

The general information for the Takumi-Class Expeditionary Command Cruiser.

General Statistics for the Takumi-Class Expeditionary Command Cruiser	
Year Introduced	1A <a href="#">YE 29</a> , 1B <a href="#">YE 30</a> , 2A <a href="#">YE 43</a>
Class/Nomenclature	<a href="#">Ke-C8-1A</a> , <a href="#">Ke-C8-1B</a> , <a href="#">Ke-C8-2A</a>
Alternative Nomenclature	None.
Designers	<a href="#">Ketsurui-Motoyoshi Katsuko</a> , <a href="#">Koyanagi Mayumi</a> , <a href="#">Star Army Research Administration</a>
Manufacturer	<a href="#">Ketsurui Fleet Yards</a>
Fielded By	<a href="#">Star Army of Yamatai</a>
Range	Unlimited Range
Maintenance Cycle	Five year <a href="#">PANTHEON</a> updates, 10 year review by the <a href="#">Star Army of Yamatai</a> with refits as needed.
Lifespan	This vessel is designed for fifty years of continual use.
Pricing	230,000,000 KS

Passengers and Crew

The personnel on board the ship. Actual occupancy can vary due to personnel shortages or other situations.

Standard Occupancy 2A	
QTY	TYPE
4,650	Nekovalkyrja
2,000	NH-33M (Miniature)
Emergency	
11,000 not including NH-33M (Miniature)	
Standard Occupancy 1A and 1B	
QTY	TYPE
4,607	Nekovalkyrja
6,000	NH-12 Nekovalkyrja (stasis) Pilots
Emergency	
11,000 not including NH-12 Nekovalkyrja	

Vessel Dimensions

- Length: 2700m
- Width: 830m
- Height: 1200m
- Decks: 150 (5m average deck height, some decks are much larger<sup>4)</sup>

Propulsion and Performance

This vessel complies with the [Star Army of Yamatai Starship Speeds](#).

Cat	Starship Type	Class	Multi-Stage Aether Drive	Integrated CFS Array	Hyperspace Drive
1	Standard Warships	Takumi-Class ECC	.375c	18,750c (~2.14 ly/h)	394,470c (0.75 ly/m)

The Takumi-Class Expeditionary Command Cruiser is not designed for atmospheric or water use. It is not capable of making planetary landings.

Damage Capacity and Combat Durability

This vessels damage capacity statistics are in compliance with [Damage Rating \(Version 3\)](#).

[Damage Rating \(Version 3\)](#) is Tier 14, Heavy Capital Ship.

The Takumi Class Command Cruiser is only a Cruiser by name. The ship is very obviously in this category due to its size.

## Appearance and Dimensions

The Takumi-Class resembles the [Nozomi-class Scout](#), but it has an elongated and stretched shape. The 1A and 1B had higher structures located aft of the bridge dome and two stabilizer-like blades extend on both sides of the vessel's wings that held the ship's CDD nacelles. The 2A rebuild/refit removed the wing structure and extended the fabrication and production bays and placed the multi-purpose launch bays on the sides. The nacelle structures, exposed tower structures were also removed.



(1A/B on left, 2A on right)

## Inside The Ship

The interior of the Takumi Expeditionary Command Cruiser is designed for the long-term deployment of personnel either in a Fleet, Task Force, or as a stand-alone ship.

## Getting Around and Arriving On The Ship

The ship has [Standard Passageways](#), [Zero-Gravity Passageways](#) and [Standard Lifts](#) that provide access to most of the ship. Some system bays and engineering areas are only accessible by the network of [Maintenance Conduits](#) that run through the entire ship.



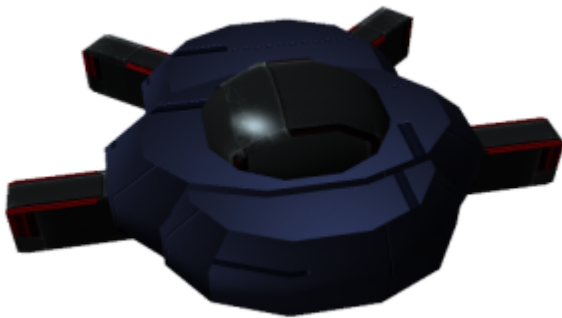
Arrival onto the ship is done via the Multi-Purpose Launch Hangars, or through [Standard Star Army Airlock](#) when the ship is docked with another ship or space station.

## Bridge

The Command Center and Centralized Control Deck.

### 2A Version

The Takumi-Class ECC has a Type 43 Bunker-Style Bridge.



The bridge design features a [Type 34 Standard Large Starship Bridge](#) which has been isolated from the rest of the ship with a heavy [Zesuaium](#) shell designed to withstand the theoretical destruction of the ship.

It can be used as a bunker if the ship has been border and is protected by [Forcefield-Nested Isolation Doors](#) that cut off lift and [Standard Star Army Maintenance Conduits](#). One of the ship's [Backup Integrated Electronics System](#) is located below the forward subdeck.

If the bridge bunker becomes compromised the [Star Army Starship Captain](#) or acting command officer can trigger an overload of the bridge's [Aether Generator](#) to destroy the structure and prevent the capture of personnel or technology.

The bridge has its own dedicated:

- [Aether Generator](#) with capacitor system and backup Fusion Reactor
- [Nodal Liquid Conduit System](#) for [Star Army Standard Life Support Systems](#).
- [Star Army Standard Starship Emergency Systems](#), including two [Star Army Escape Pod, Type 35 "Seizonsha"](#)
- Emergency Supplies (Determined by the ship's [Star Army Starship Captain](#) and [Star Army Logistics](#))

### Modifications of the Bridge

A spiral-style staircase runs from the top of the central bunker to the bottom of the [Type 34 Standard Large Starship Bridge](#), it is located behind the First Officer's station. It connects the [War Room](#) (above) and the [Command Office](#) (below) which are also part of the bunker structure.

### 1A and 1B Version

The bridge on the original versions of the ship was an exposed structure on the outer dorsal hull of the ship. See the [Takumi Command Deck](#).

### Auxiliary Bridge

A secondary command center for emergencies.

### 2A Version

The original Auxiliary Bridge, has been replaced with a [Star Army Internal Small Starship Bridge, Type 40](#).



### 1A and 1B Versions

In the event that the main bridge is compromised or destroyed, there is an auxiliary control room located on deck thirty in the most central area of the ship. The auxiliary bridge is heavily armored, its interior sections are lined with Yamataium plates and it has its own quantum power plant, access to the ACS, its own [Hemosynthetic Conduit System](#) network, and can be sealed off from the rest of the ship.

## Engineering

The main subsystem hub on the ship.

### 2A Version

The engineering section still occupies three aft compartments of decks twenty-two to twenty-four. The upgraded section has all of the same features as the [Standard Star Army Engineering Bay](#). It serves as the central access to the [Nodal Liquid Conduit System](#) and its associated systems, and houses two very large [Standard Star Army Fabrication Area](#) for the concentrated deployment of the [Universal Hemosynthetic Fabrication System Type 43](#) for damage control and component replacement.

These compartments have access to key [Standard Star Army Maintenance Conduits](#) to the [Multi-Stage Aether Drive](#) assemblies that are spread out across the aft sections of the ship. The housing for the primary [Aether](#) reactors, and the [Yumeoibito Hyperspace Fold Drive](#) is also located in this section.

[Hemosynthetic Tubes](#) have replaced the original tubes found in the alcoves for sprite creation by MEGAMI.

### 1A and 1B Versions

Three aft sections of decks twenty-two, twenty-three, and twenty-four are devoted to the main engineering. Engineering houses the primary Aether generator power plant, hyperspace fold drive, and other major systems. It is also the primary junction point of maintenance conduits that lead to other system access points around the ship and can serve as an auxiliary method of moving thru the vessel. The chief engineer's office is located off the main control room on deck twenty-three.

Maintenance tunnels have several alcoves for the production of [NH-12 Nekovalkyrja](#) Sprites for damage control and intruder suppression. The tunnels are large enough to accommodate most Star Army Power Armors.

Two secondary engineering monitoring rooms also are located in the forward bow, here the secondary quantum power plants, and backup controls can be accessed in the event that main engineering is compromised in combat or other high alert situations.

## Laboratories and Hospitals

The Takumi-Class Expeditionary Command Cruiser is host to some of the best medical and scientific

facilities in the [Star Army of Yamatai](#) fleets.

## 2A Version

The newly updated rebuild of the Takumi-Class Expeditionary Cruiser hosts a [Hospital](#), and six [Star Army Combined Sciences Laboratory](#) that can be reconfigured to meet different mission profiles.

## 1A and 1B Versions

Laboratory Complex I: The Takumi boasts the largest scientific laboratory of any ship in the fleet. With the ability to accommodate over two hundred science personnel. There are eight decks in the central forward section of the ship devoted to Biology/Xenobiology, Chemistry, Organic Chemistry, and other labs as well as two storage facilities for containment of specimens large and small and of various risk levels. The labs all meet [Star Army Research Administration](#) regulations for bio-containment, safety, and research integrity.

Laboratory Complex II: The second section of the laboratory complex is an additional two deck sections beneath Laboratory Complex I. Equipped with mission variable laboratory spaces, stellar cartography, and houses the ship's Medical Bay. The ship's medical bay serves the needs of the crew with a spacious infirmary, examination alcoves, and operating rooms. Medical Bay is also the central junction for the ship's HSCS systems and is where body synthesis, mental backups, and torture of prisoners is generally conducted.

## Galaxy Arboretum

The Galaxy Arboretum is an artificially maintained [Yamatai \(Planet\)](#) environment. This area of the ship simulates the experience of being on Yamatai, everything from crystal-clear rippling ponds filled with fancy fish to towering fruit trees and a variable climate control system to simulate weather and maintain this carefully planned environment. Benches, fountains, and walking paths make for a great way to relax during those off duty hours. This section of the ship was recommended by [Star Army Research Administration](#) for maintaining a good mental state in crew members during extremely long voyages. The 2A rebuild kept this feature intact.



## Accommodations and Amenities

Like on most [Star Army of Yamatai](#) ships, the accommodations are dependant on [rank](#). Unoccupied space is generally utilized as space for additional cargo and [equipment](#). During peace-time or shortages, ships are generally assigned less crew.

Accommodations	
<b>Crew Cabins</b>	Large crew cabins accommodate the majority of the ship's company.
<b>Command Suites</b>	One Suite for the <a href="#">Star Army Starship Captain</a> and one for the <a href="#">Star Army First Officer</a>
<b>Flag Suites</b>	A suite that is provided for visiting or assigned officers with rank <a href="#">Shôshô</a> or above.
<b>Officer's Cabins</b>	Accommodations for crew ranked <a href="#">Shoi Kohosei</a> or higher.

Standard Amenities provided by the [Star Army](#) provide soldiers who are assigned to ships and facilities with food, personal items, some [equipment](#) and services similar to those found on worlds in the [Yamatai Star Empire](#).

Standard Amenities	
<b>Star Army Onsen</b>	A traditional social bath house.
<b>Standard Star Army Crew Shower</b>	The ship has both private shower rooms and communal ones.
<b>Standard Star Army Crew Lounge</b>	A comfortable place for the crew to gather off-duty.
<b>Standard Star Army Galley</b>	<a href="#">Star Army Cooks</a> are always cooking up some grub here.
<b>Standard Star Army Dining Hall</b>	The dining hall is a place for the crew to eat and socialize.
<b>Standard Star Army Wardroom <sup>5)</sup></b>	A private dining room for officers.
<b>Standard Star Army Laundry Room</b>	The laundry rooms are a great place to clean dirty linens.
<b>Standard Star Army Post Office</b>	A shipping office for sending and receiving packages.
<b>Star Army Ship's Store</b>	A basic <a href="#">Star Army</a> on ship store. Often run by friendly <a href="#">Caretakers</a> .

Some advanced amenities are provided on some ships, especially in the [First Expeditionary Fleet](#) where vetted food providers offer up some grub and refreshments for reasonable prices.

Some ships have some of these establishments:

- [Kikyo Pie Company](#) - A pizza company, that delivers hot and fresh pies.
- [Tachi's](#) - A traditional 🍷 [Izakaya](#) serving 🍷 [bar snacks](#).
- [Tokyo Brewing Company](#) - A great place to unwind with fresh beer and pub food.
- [Sea Of Plenty](#) - A seafood and seaweed fast food eatery.

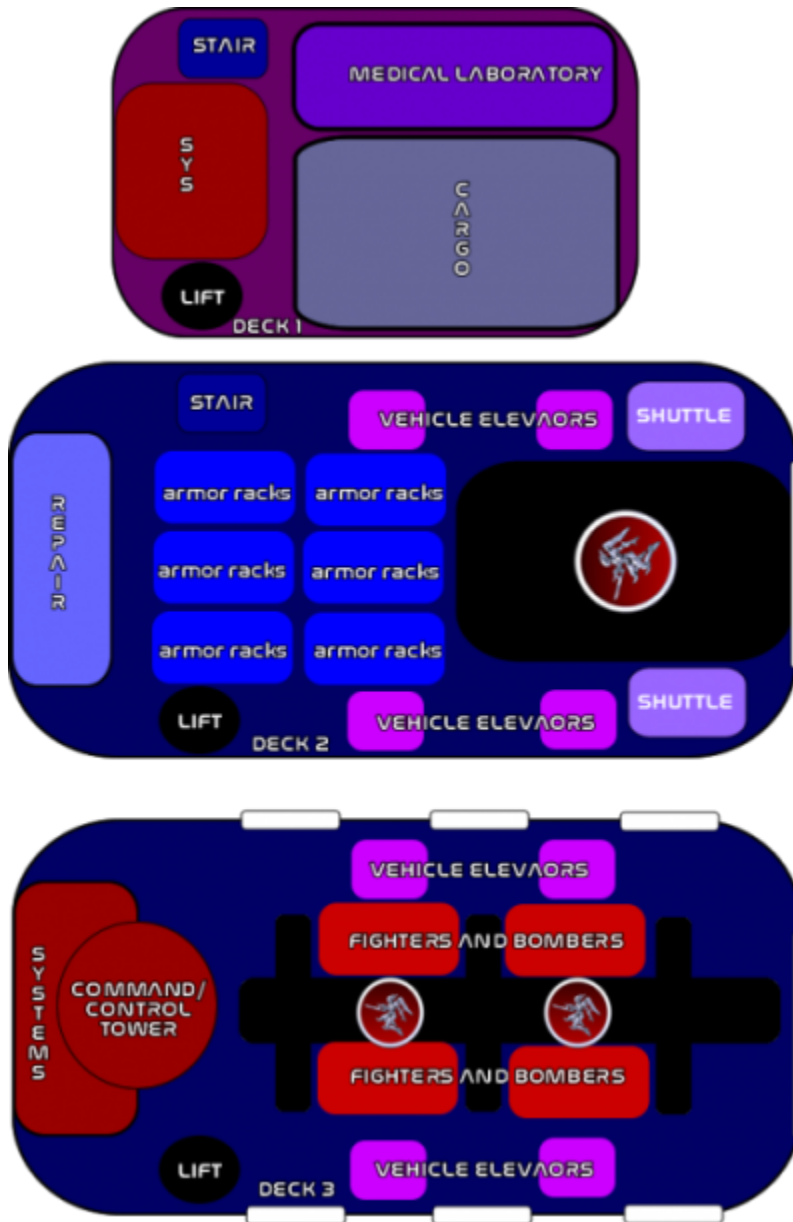
On [First Expeditionary Fleet](#) Capital Ships, Officer dining is provided by vetted and contracted chefs from [Takeda House](#), the price of which is covered by the [Motoyoshi Clan](#).

## Multi-Purpose Launch Bays

The Multi-Purpose Launch Bays provide launch facilities for power armors, shuttles, and other craft.

### 2A Version

The 2A version has an entirely new launch bay system. There is one located on the starboard side, and another on the port side of the ship.



### Bay Deck 1

The Multi-Purpose Launch Bay has a cargo area for storage of supplies, additional parts for vehicles and mission required [equipment](#). There is also a [medical laboratory](#) for the triage and treatment of battlefield wounds. The deck is accessible using stairs from Deck Two and a [standard lift](#) that travels to all decks of the ship.

### Bay Deck 2

The standard bay has six power armor racks with a total capacity of two thousand [Ke-M2 "Mindy" Series of Power Armor](#) per bay. During staging and pre-combat procedures, pilots are generally loaded into their armors and held there until launch to keep the flight decks clear. The racks are stacked in movable spindles stacked from bottom to top of the deck, when ready for launch the armor is rotated down to the

bottom and ejected into the bay for launch out the bay doors. The racks include stairs and gangways for pilots to access and load into armors on various levels of the racks. Nets and internal [graviton beam projectors](#) help to protect the racks from incidental crashes and assist with moving units for storage.

The Repair and Manufacturing alcoves in the Multi-Purpose Launch Bays are designed to repair and build [Ke-M2 "Mindy" Series of Power Armor](#) units. It is connected to the [Nodal Liquid Conduit System](#) and [Universal Hemosynthetic Fabrication System Type 43](#) functions. It has robotic arms and tools devoted to the efficient and precise assembly of the units. There are five alcoves in the Repair and Fabrication area on Deck Two.

The deck is accessible using stairs from Deck One and a [standard lift](#) that travels to all decks of the ship.

There are four vehicle lifts devoted to carrying units between Deck Two and Deck Three for alternative launch strategies or if something prevents launch from one deck or the other.

### **Bay Deck 3**

The Command and Control Tower serve as the heart of the Multi-Purpose Launch Bays. It works as a flight control tower; it is where the bay provides communication, launch control, and flight assistance to pilots. A secure chamber stows the bay's [Escort Integrated Electronics System \(EIES\)](#).

The Multi-Purpose Launch Bays's third deck has six double stalls which hold twelve (in total) [Fighters or Bombers](#) or one [Star Army Fighter Squadron](#). Each stall has two gantry ladders and [Star Army Tool Locker](#). Repair units and [fabrication chambers](#) assist with repairs of these units.

The deck is accessible using stairs from Deck Two and a [standard lift](#) that travels to all decks of the ship.

There are four vehicle lifts devoted to carrying units between Deck Two and Deck Three for alternative launch strategies or if something prevents launch from one deck or the other.

This deck can also be modified to hold optional [M19 Ryoko Mechas](#).

### **1A and 1B Version**

The launch bay is located above the cargo bay and storage facility. The bay is the entire width of the aft section, and is the height of three average deck sections, however from the exterior it appeared there are two distinct bays. Two bay doors open up from the stern of the vessel, and a single door both the port and starboard side. The combined bay serves for the launch of shuttles and armors. The floor is a glossy, polished black and the walls are made of the typical gray paneling found in most Star Army ships.

Maintenance alcoves line the forward most section of the bays, as well as pilot locker storage and weapon holds for armor weaponry and accessories. In the event of an emergency, blast shutters and force fields can seal the armor bay off from the rest of the ship.

## Production Bays

The 2A version of the ship expanded the production bays. They are located aft of the new Multi-Purpose Launch Bays. Unlike the [Yamato-Class Flagship](#), the Takumi-Class does not bring other ships into its production bays as that it can't fit most ships. The production bays are huge factory sections of the ship which is focused on the use of the [Universal Hemosynthetic Fabrication System Type 43](#). MEGAMI assisted robotic arms, [graviton beam arrays](#), and conveyor systems help with the production of new parts and components to repair damaged ships, produce armors and other small craft to increase the survivability of expeditionary fleets on long deployments.

## Cargo Bays

Cargo Bays are located in the ventral aft section of the ship for [Standard Starship Cargo Containers](#). It has tracks, cranes, and robotic arms all designed to move, load, unload and stack [Standard Starship Cargo Containers](#). Forcefields (Graviton Fields) similar to those found on [Star Army of Yamatai Shuttle Bays](#) allow for the maintenance of the various atmospheric and environmental conditions inside of the container holds. Forcefields, magnetic clamps, and other measures to secure cargo can also be swapped in and out in different configurations.

## Subsystems

The systems and inner workings of the ship.

## Hull and Integrated Hull Systems

The Hull and Integrated Hull Systems of the Takumi-Class Expeditionary Command Cruiser have not changed much in the 2A rebuild/refit. Some structures such as the exposed towers, bridge dome, etc have been modified to increase the durability and reduce the vulnerabilities of the ship.

### Primary Space frame

The Takumi's primary space frame is constructed primarily of [Zesuaium](#) truss frames interlocked together. These major trusses are arranged in higher concentration around the sections of the vessel that are most likely to become stressed like around the CDD nacelles (1A and 1B), STL engines and to provide additional strength to areas such as armor bays, the main bridge, and around major weapon mounts. Smaller [Zesuaium](#) trusses that form the interior frame of the vessel provide internal support for decks and interior sections.

Force field generators are arranged at major truss junctions to provide additional strength, and protect these junctions from anti-matter hits in the event the major space frame becomes exposed or compromised in a battle. Of course, the force field generators are small and can only absorb a limited

amount of energy before becoming useless but this serves effort to provide strength to the space frame.

## Secondary Space frame

The secondary framework is nested within the primary space frame to provide additional support and provide support for ship systems. The secondary frame is composed primarily of small [Yamataium](#) trusses and rods lined with [Yarvex](#) meshing to provide shielding to interior structures.

## Armored Hull Plating

The primary substrate of the hull plating is [Zesuaium](#) coated 0.60m thick [Yamataium](#) plates. Interior sections of the vessel are provided shielding by the layering of [Yarvex](#) meshing across the secondary framework structure.

## Integrated Hull Systems

The integrated hull systems are as follows:

- [Integrated CFS Array](#), which provides propulsion in CDD, defense and stealth operation.
- [Nodal Liquid Conduit System](#), a system which uses the femtomechanical nature of [Hemosynthetics](#). Assists with damage control and other functions. When the shuttle is landed, it can be hooked into the system of its host vessel or space station for greater efficiency for this system.
  - Advanced Damage Control - [Ketsurui Fleet Yards](#) brought in [Hemosynthologist](#), [Shinichiro Tomoko](#) onto the design team to testbed a new capillary system for the interlocking [Yamataium](#) hull. Standardly [Star Army of Yamatai](#) ships have capillaries which deliver [hemosynth](#) to interlocking [Yamataium](#) plating which boosts the annealing properties of [Yamataium](#). The system has a tweak where the femtomachinery components are programmed to respond to osmotic conditions. A breach or damage to the armor creates a concentration gradient, which the fetomachinery is triggered to increase replication and flow along the gradient towards the damaged areas. This was first deployed in the [Ke-T10 "Fukuro" Multi-Role Shuttle](#).
  - The Matter Collection System - The MCS allows the ship to collect hydrogen molecules as it travels through space, which can be used to provide fuel or converted into higher elements for use in the [Nodal Liquid Conduit System](#). The MCS units can be shielded in combat with cover plates.

## Power Systems

The ship is powered by decentralized [Aether](#) generators spread throughout the ship, the highest number of which are located in and around the engineering compartments. Due to the development of the ship during a time when there was a perceived threat from enemy development of systems that interfered

with [Aether](#), the ship has several secondary [Quantum Foam Generators](#).

## Propulsion Systems

The Takumi-Class is equipped with an [Multi-Stage Aether Drive](#) for sublight applications, and it uses the [Integrated CFS Array](#) for [Continuum Distortion Drive](#) propulsion. The [Yugumo Corporation](#) contributed the [Yumeoibito Hyperspace Fold Drive](#). It has Maneuvering Thrusters ( [ion thrusters](#)) are used primarily attitude adjustment, docking and station keeping.

## Electronics Suite

The 1B and the 2A are equipped with [MEGAMI](#). This standardly includes all [Star Army Standard Communications Array](#), Sensors and other basic electronics systems.

The 1A version of the ship first deployed the [Warship Integrated Electronics System \(WIES\)](#).

## Life Support and Emergency Systems

The Takumi-Class is equipped with the latest [Life Support Systems](#), which included the update in [YE 43](#) which included integration with the new [Nodal Liquid Conduit System](#).

The ship is equipped with all [Star Army Standard Starship Emergency Systems](#) including [Star Army Escape Pod, Type 35 "Seizonsha"](#) and [Star Army Escape Pod, Type 41 "Kodate"](#).

## Weapons

The Takumi-Class Expeditionary Command Cruiser is outfitted with the following weapons systems:

- 1 x [Multi-Mode Aether Shock Array](#) (DR 15)
- 24 x [Ke-D7-W3900 Mass Launchers](#) (Tier 11) - Pop-up launch system that is covered when not being used.
- 128 x [Ke-S3-W3102 Star Army Anti-Fighter Turret, Type 31](#) (Tier 7) - Pop-up launch system that is covered when not being used.
- 16 x Dual Port Torpedo Launchers, Type 43 ([Ke-Z1 Series Anti-Starship Torpedoes](#))

The ship also has an inventory of 300 [Multi-Role Science Drone Type 43s](#).

## 1A and 1B

Warning the 1A and 1B were approved before [Weapon Limitations](#):

- 12 [KFY-C8-W29A01 Positron 'Striker' Array](#)
- 1 [Heavy Subspace-Encased Positron Cannon](#)
- 3 [KFY-C8-W2904 Subspace-Encased Particle Cannon](#)
- 2 [KFY-C8-W2907 Projected Energy Beam Rakers](#) (See below)
- [Projected Energy Beams](#)
- 1000 [KFY Ke-C8-W2903 Mobile Variable Pods](#)
- 6 Dual Port Type 29 Torpedo Launchers (See below)

## Small Craft and Armor Inventory

The small craft inventory of the ship can be changed, but it usually includes:



Shuttles	
QTY	Class
10	<a href="#">Ke-T10 "Fukuro" Multi-Role Shuttle</a>
Power Armors and Mecha	
QTY	Class
4,000	<a href="#">Ke-M2-4 Series "Mindy" Armor</a>
2,000	<a href="#">Sylph M4 Light Mecha</a> <sup>6)</sup>
48	<a href="#">M19 Ryoko Mecha</a> (Optional)
Fighters and Bomber	
QTY	Unit
4	<a href="#">Star Army Fighter Squadron</a>

## OOO Notes

This article was created by [Andrew](#). It was approved by [Wes](#) on August 22, 2006: [Approval Thread](#)

- 1B DOGA Art was by [Kai](#). Original art is lost, so we have to use what we have.
- 2A DOGA Art is by [Andrew](#).

- Small Bridge Art is by [Toshiro](#).
- Artbreeder Galaxy Arboreetum is by [Charaa](#).
- Multi-Purpose Launch Bay by [Andrew](#) in Fireworks MX.
- Shuttle Art by Adam Kopala.

This article was updated by [Andrew](#) on 1/30/2021 for 2A rebuild/refit. It was approved by [Wes](#).<sup>7)</sup>

Star Army Logistics	
<b>Supply Classification</b>	Class A - STARSHIPS
Products & Items Database	
<b>Product Categories</b>	starships
<b>Product Name</b>	Takumi-class Expeditionary Command Cruiser
<b>Nomenclature</b>	Ke-C8-2A
<b>Manufacturer</b>	<a href="#">Ketsurui Fleet Yards</a>
<b>Year Released</b>	<a href="#">YE 29</a>
<b>Price (KS)</b>	230,000,000.00 KS

1)

[YSS Mazu, History](#)

2)

<https://stararmy.com/roleplay-forum/threads/1xf-saoy-resolutions-of-the-ghost-episode-1-i-stand-again.64271/#post-399723>

3)

[YSS Mazu, Design Modifications](#)

4)

Production Bays, Launch Bay, Cargo Holds, Weapons Storage, Bridge, etc

5)

The Command Wardroom has a notable large transparent [Zesuaium](#) viewport.

6)

For [NH-33M \(Miniature\)](#)

7)

<https://stararmy.com/roleplay-forum/threads/takumi-expeditionary-command-cruiser-2a-rebuild-refit.67035/#post-419216>

From:

<https://wiki.stararmy.com/> - **STAR ARMY**

Permanent link:

[https://wiki.stararmy.com/doku.php?id=stararmy:starship\\_classes:takumi-command-cruiser](https://wiki.stararmy.com/doku.php?id=stararmy:starship_classes:takumi-command-cruiser)

Last update: **2023/12/21 01:02**

