

# Type 30 Mental Transfer and Backup Unit

Manufacturer: [Ketsurui Zaibatsu](#)

The Type 30 Mental Transfer and Backup Unit (MTBU) is the latest in [Soul Transfer](#) technology for use within the [Yamatai Star Empire](#). It became available in [YE 31](#).

The MTBU is routinely used for the following purposes:

- Creating and updating of mental backups. The person's consciousness is stored so that it can be restored at a later time.
- Transfer (download) a backed up consciousness into a newly recreated body. This can be either to restore a deceased person, or perform a body transfer putting the consciousness into a newly designed body.

Operation of the Mental Transfer and Backup Unit should be supervised by trained medical personnel.

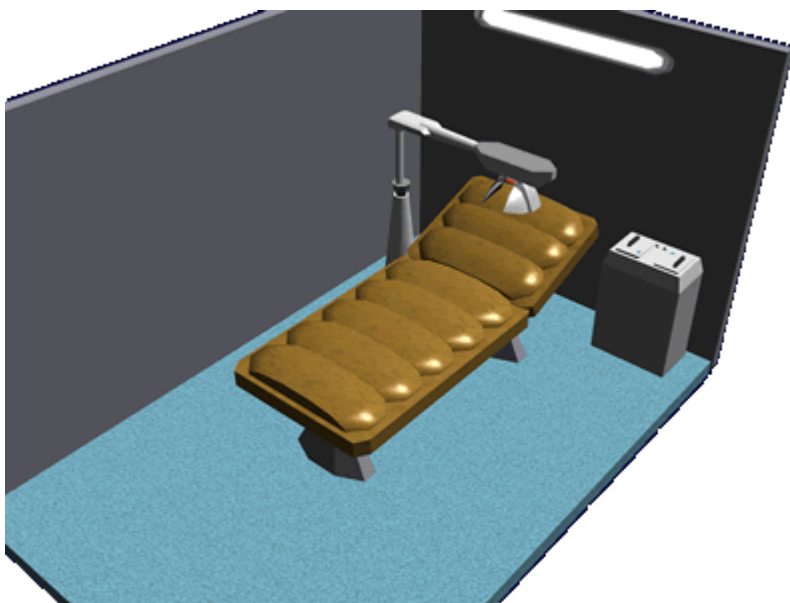
## Backup

Making a complete backup can take between 15 and 30 minutes depending upon the age of the individual. Updating an existing backup usually takes approximately 10 minutes.

## Download

Downloading a backup into a body takes 10 minutes longer than it took to make the backup. This is because after the download, the SIU performs a verification.

Image of the Type 30 MTBU



# Components

The MTBU consists of the following:

- Synaptic interface unit
- Biometric bed
- System control interface

## Synaptic Interface Unit

The Synaptic Interface Unit (SIU) resembles a visor. When placed upon the subject the SIU performs a scan to identify the type of brain to be interfaced to. It then calibrates its internal circuits accordingly. The SIU also has the ability to sedate the subject if desired.

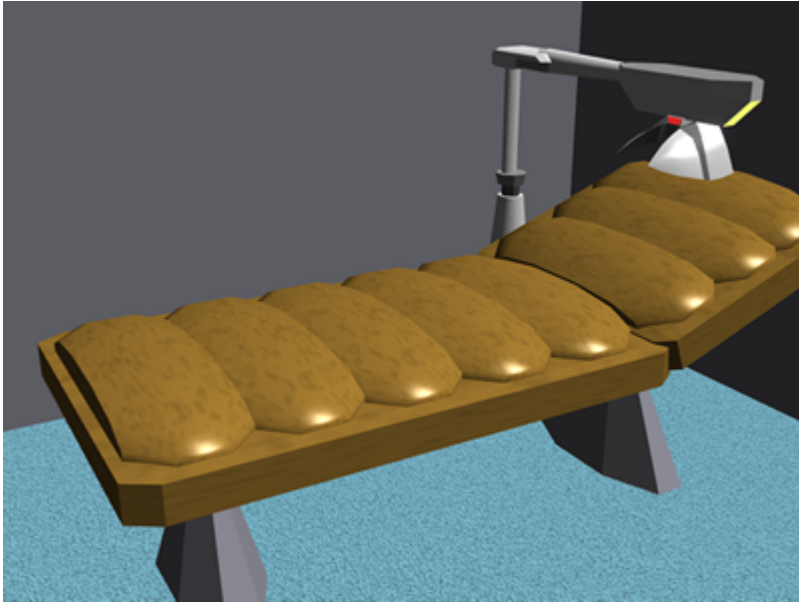
## Biometric bed

This is a specially designed adjustable bed. It is covered in a waterproof synthetic substance. The bed has built-in biometric sensors that allow the operator to monitor the status of the subject.

## System Control Interface

The System Control Interface (SCI) is the heart of the system. It allows the operator to specify the desired task, controls the SIU and encrypts the backup for storage, and transfers the backup into the designated storage repository. On starships memory backups are typically stored in a [Soul Savior Pod](#), but if one is not available they can be sorted in the ship's computer.

Close up of the biometric bed and SIU



## Updates

In [YE 32](#) the [Type 32 Remote Backup Unit](#) became available expanding the systems capabilities.

## Related links

- [Memory Backup Protection Act of YE 30](#)

## OOO Notes

Authored by [Nashoba](#) Feb 26, 2009 Artwork created by [Nashoba](#). Submission Approved by [Wes](#) on Feb 26, 2009. [Forum Thread](#).

From:  
<https://wiki.starmy.com/> - **STAR ARMY**

Permanent link:  
[https://wiki.starmy.com/doku.php?id=starmy:systems:type\\_30\\_memory\\_transfer\\_unit](https://wiki.starmy.com/doku.php?id=starmy:systems:type_30_memory_transfer_unit)

Last update: **2023/12/21 01:02**

